



The Timken Company

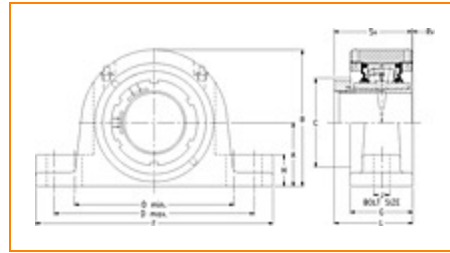
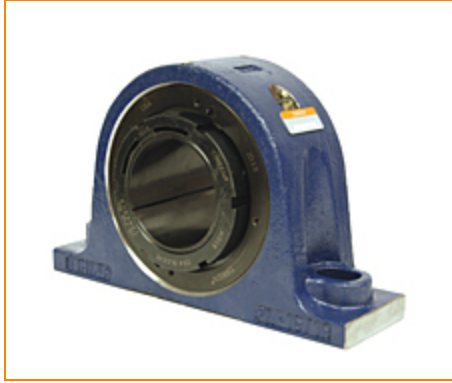
4500 Mt Pleasant St. NW

N. Canton, OH 44720

Phone: (234) 262-3000

E-Mail: CustomerCAD@timken.com • **Web site:** www.timken.com

Part Number QVPKT15V065S, Single V-Lock Two-Bolt Pillow Block



[Specifications](#) | [Dimensions](#) | [Radial and Thrust Factors](#) | [Engineering Seal Speed](#) | [Engineering Bearing Attributes](#) | [Engineering Internal Radial Clearance](#)

Specifications

Engineering Group Mounted Bearing

Bearing Number 22215

Shaft Size 65 mm

Shaft Size Type Metric

Full Timken Part Number

- QVPKT15V065SB
- QVPKT15V065SC
- QVPKT15V065SEB
- QVPKT15V065SEC
- QVPKT15V065SEM
- QVPKT15V065SEN
- QVPKT15V065SEO
- QVPKT15V065SET
- QVPKT15V065SM
- QVPKT15V065SN
- QVPKT15V065SO
- QVPKT15V065ST



Locking Style	Single V-Lock
Housing Construction	Two-Bolt Pillow Block
UPC Code	0883450057028 0883450057035 0883450206952 0883450206990 0883450219389 0883450219426 0883450231800 0883450231848 0883450240543 0883450240581 0883450245500 0883450245548

Dimensions

Dimension A	3-1/2 in 88.9 mm
Dimension B	6.84 in 173.7 mm
Dimension C	3.7 in 94 mm
Dimension D Min	9.06 in 230.1 mm
Dimension D Max	10.44 in 265.2 mm
Dimension F	13 in 330.2 mm
Dimension G	2.98 in 75.7 mm
Dimension H	1.38 in 35.1 mm

Dimension J (Bolt Size)	0.875 in 24 mm
--------------------------------	-------------------

Dimension L	3.54 in 89.9 mm
--------------------	--------------------

Dimension RV	0.14 in 3.6 mm
---------------------	-------------------

Dimension SV	3.25 in 82.6 mm
---------------------	--------------------

Radial and Thrust Factors

C0 - Static Load	54100 lbf 240000 N
-------------------------	-----------------------

C - Dynamic Load (Basic)	49900 lbf 222000 N
---------------------------------	-----------------------

e - Geometry Factor	0.22
----------------------------	------

Y1 - Geometry Factor	3.14
-----------------------------	------

Y2 - Geometry Factor	4.67
-----------------------------	------

Engineering Seal Speed

Oil Lubrication - M/N Seal	1600 rpm
-----------------------------------	----------

Oil Lubrication - T Seal	2900 rpm
---------------------------------	----------

Oil Lubrication - B/C/O Seal	1300 rpm
-------------------------------------	----------

Grease Lubrication - M/N Seal	1600 rpm
--------------------------------------	----------

Grease Lubrication - T Seal	2400 rpm
------------------------------------	----------

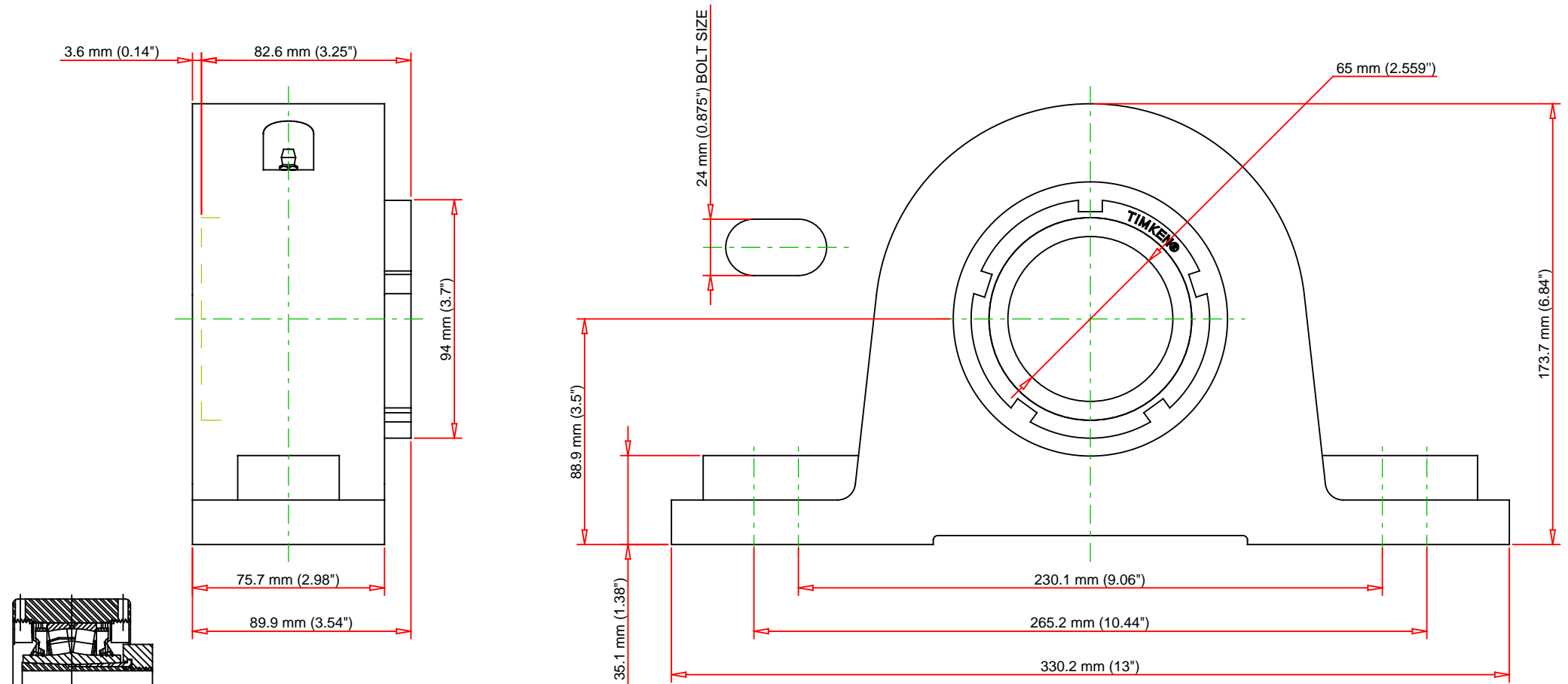
Grease Lubrication - B/C/O Seal	1300 rpm
--	----------

Engineering Bearing Attributes

Float	0.083 in 2.108 mm
Shaft Tolerance	0.0015 in 0.038 mm

Engineering Internal Radial Clearance

Eng Internal Radial Clearance - Min	0.0030
Eng Internal Radial Clearance - Max	0.0037
Pre Install Clearance Min	0.0030 in 0.075 mm
Pre Install Clearance Max	0.0037 in 0.094 mm



Note: Section View not to Scale

C - Dynamic Load	49900	lbf	222000	N
C0 - Static Load	54100	lbf	240000	N
Weight	28	lb	12.7	kg
Max. Speed T-Seals & Grease	2400	rpm		
Rad. Clearance - Max.	0.0037			

TIMKEN

THE TIMKEN COMPANY
NORTH CANTON, OHIO USA

QVPKT15V065S
Single V-Lock Two-Bolt Pillow Block

Every reasonable effort has been made to ensure the accuracy of the information contained in this writing, but no liability is accepted for errors, omissions or for any other reason.

FOR DISCUSSION ONLY