



The Timken Company

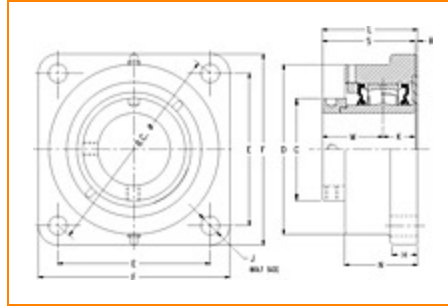
4500 Mt Pleasant St. NW

N. Canton, OH 44720

Phone: (234) 262-3000

E-Mail: CustomerCAD@timken.com • **Web site:** www.timken.com

Part Number QMFL09J040S, Eccentric Four Bolt Square Flange Block



[Specifications](#) | [Dimensions](#) | [Radial and Thrust Factors](#) | [Engineering Seal Speed](#) | [Engineering Bearing Attributes](#) | [Engineering Internal Radial Clearance](#)

Specifications

Engineering Group	Mounted Bearing
Bearing Number	22209
Shaft Size	40 mm
Shaft Size Type	Metric
Full Timken Part Number	QMFL09J040SB QMFL09J040SC QMFL09J040SEB QMFL09J040SEC QMFL09J040SEM QMFL09J040SEN QMFL09J040SEO QMFL09J040SET QMFL09J040SM QMFL09J040SN QMFL09J040SO



QMFL09J040ST

Locking Style

Eccentric

Housing Construction

Four-Bolt Square Flange

UPC Code

0883450030991
 0883450031028
 0883450255226
 0883450255561
 0883450262804
 0883450262811
 0883450262828
 0883450262835
 0883450262965
 0883450262972
 0883450262989
 0883450262996

Dimensions**Dimension BC**

5.5 in
 139.7 mm

Dimension C

2.63 in
 66.8 mm

Dimension D

4.6 in
 116.8 mm

Dimension E

3.89 in
 98.8 mm

Dimension F

5.38 in
 136.7 mm

Dimension H

0.88 in
 22.4 mm

Dimension J (Bolt Size)

0.5 in
 12 mm

Dimension K

0.99 in
 25.1 mm

Dimension L Exp	3.21 in 81.5 mm
------------------------	--------------------

Dimension L Fix	3.13 in 79.5 mm
------------------------	--------------------

Dimension M	1.88 in 47.8 mm
--------------------	--------------------

Dimension N	2.5 in 63.5 mm
--------------------	-------------------

Dimension R	0.26 in 6.6 mm
--------------------	-------------------

Dimension S	2.87 in 72.9 mm
--------------------	--------------------

Radial and Thrust Factors

C0 - Static Load	24200 lbf 108000 N
-------------------------	-----------------------

C - Dynamic Load (Basic)	24500 lbf 109000 N
---------------------------------	-----------------------

e - Geometry Factor	0.27
----------------------------	------

Y1 - Geometry Factor	2.5
-----------------------------	-----

Y2 - Geometry Factor	3.72
-----------------------------	------

Engineering Seal Speed

Oil Lubrication - M/N Seal	2700 rpm
-----------------------------------	----------

Oil Lubrication - T Seal	4500 rpm
---------------------------------	----------

Oil Lubrication - B/C/O Seal	1950 rpm
-------------------------------------	----------

Grease Lubrication - M/N Seal	2700 rpm
--------------------------------------	----------

Grease Lubrication - T Seal	4000 rpm
------------------------------------	----------

Grease Lubrication - B/C/O Seal	1950 rpm
--	----------

Engineering Bearing Attributes

Float	0.050 in 1.270 mm
--------------	----------------------

Shaft Tolerance	0.0015 in 0.038 mm
------------------------	-----------------------

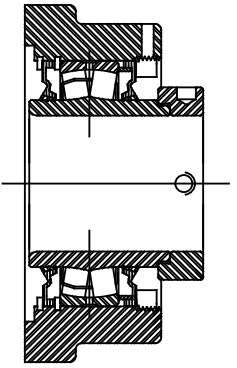
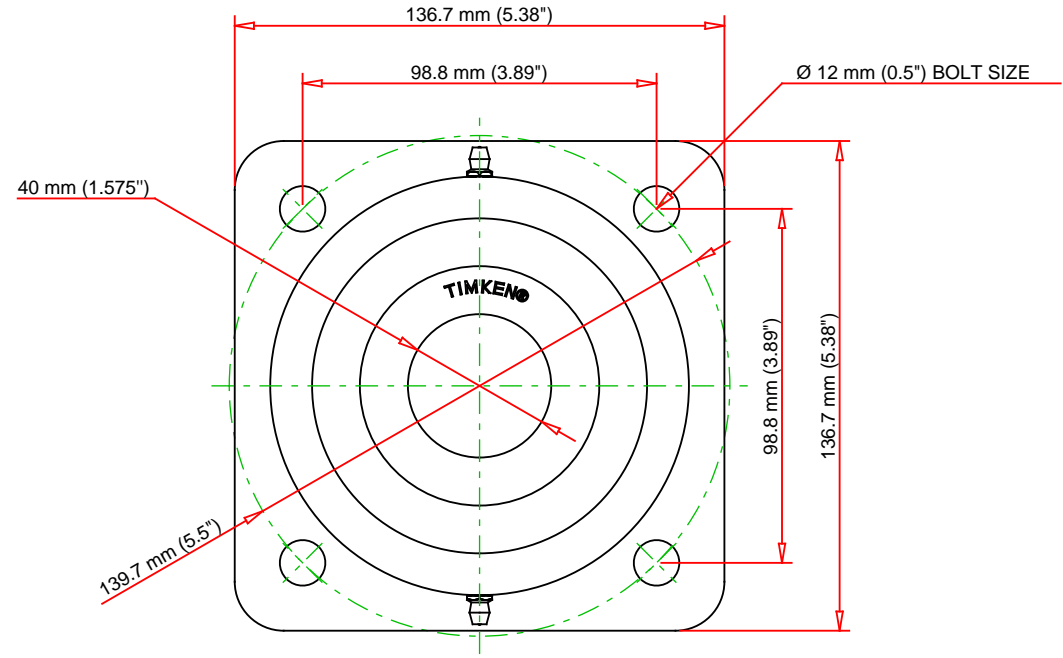
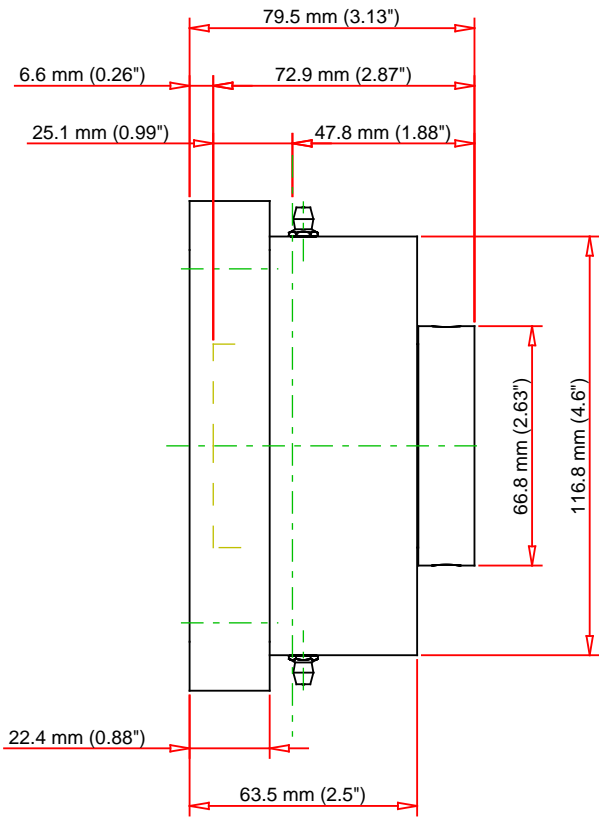
Engineering Internal Radial Clearance

Eng Internal Radial Clearance - Min	0.0014
--	--------

Eng Internal Radial Clearance - Max	0.0022
--	--------

Pre Install Clearance Min	0.0014 in 0.035 mm
----------------------------------	-----------------------

Pre Install Clearance Max	0.0022 in 0.055 mm
----------------------------------	-----------------------



Note: Section View not to Scale

C - Dynamic Load	24500	lbf	109000	N
C0 - Static Load	24200	lbf	108000	N
Weight	11	lb	5	kg
Max. Speed T-Seals & Grease	4000	rpm		
Rad. Clearance - Max.	0.0022			

TIMKEN
THE TIMKEN COMPANY
NORTH CANTON, OHIO USA

QMFL09J040S
Eccentric Four Bolt Square Flange Block

Every reasonable effort has been made to ensure the accuracy of the information contained in this writing, but no liability is accepted for errors, omissions or for any other reason.

FOR DISCUSSION ONLY