



The Timken Company

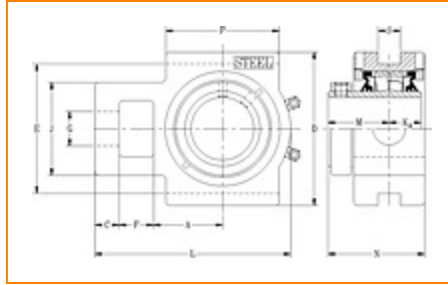
4500 Mt Pleasant St. NW

N. Canton, OH 44720

Phone: (234) 262-3000

E-Mail: CustomerCAD@timken.com • **Web site:** www.timken.com

Part Number QATU18A307S, Single Concentric Take-Up Block



[Specifications](#) | [Dimensions](#) | [Radial and Thrust Factors](#) | [Engineering Seal Speed](#) | [Engineering Bearing Attributes](#) | [Engineering Internal Radial Clearance](#)

Specifications

Engineering Group Mounted Bearing

Bearing Number 22218

Shaft Size 3 7/16 in

Shaft Size Type Imperial

Full Timken Part Number

- QATU18A307SB
- QATU18A307SC
- QATU18A307SEB
- QATU18A307SEC
- QATU18A307SEM
- QATU18A307SEN
- QATU18A307SEO
- QATU18A307SET
- QATU18A307SM
- QATU18A307SN
- QATU18A307SO



QATU18A307ST

Locking Style	Single Concentric
Housing Construction	Take-Up
UPC Code	0883450050807 0883450050814 0883450050838 0883450050845 0883450050852 0883450050869 0883450050876 0883450050883 0883450195263 0883450195423 0883450272445 0883450272612

Dimensions

Dimension A1	3.63 in 92.2 mm
Dimension C	1 in 25.4 mm
Dimension D	7.63 in 193.8 mm
Dimension E	6.81 in 173 mm
Dimension F	1.81 in 46 mm
Dimension G	1.88 in 47.8 mm
Dimension J	4.88 in 124 mm
Dimension L	10.12 in 257 mm

Dimension KA	1.44 in 36.6 mm
Dimension M	2.59 in 65.8 mm
Dimension N	4.22 in 107.2 mm
Dimension P	6.25 in 158.8 mm
Dimension S	1.81 in 46 mm

Radial and Thrust Factors

C0 - Static Load	87200 lbf 388000 N
C - Dynamic Load (Basic)	79700 lbf 355000 N
e - Geometry Factor	0.23
Y1 - Geometry Factor	2.90
Y2 - Geometry Factor	4.31

Engineering Seal Speed

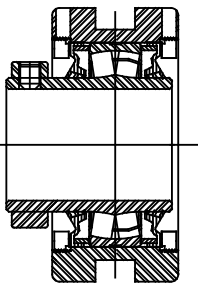
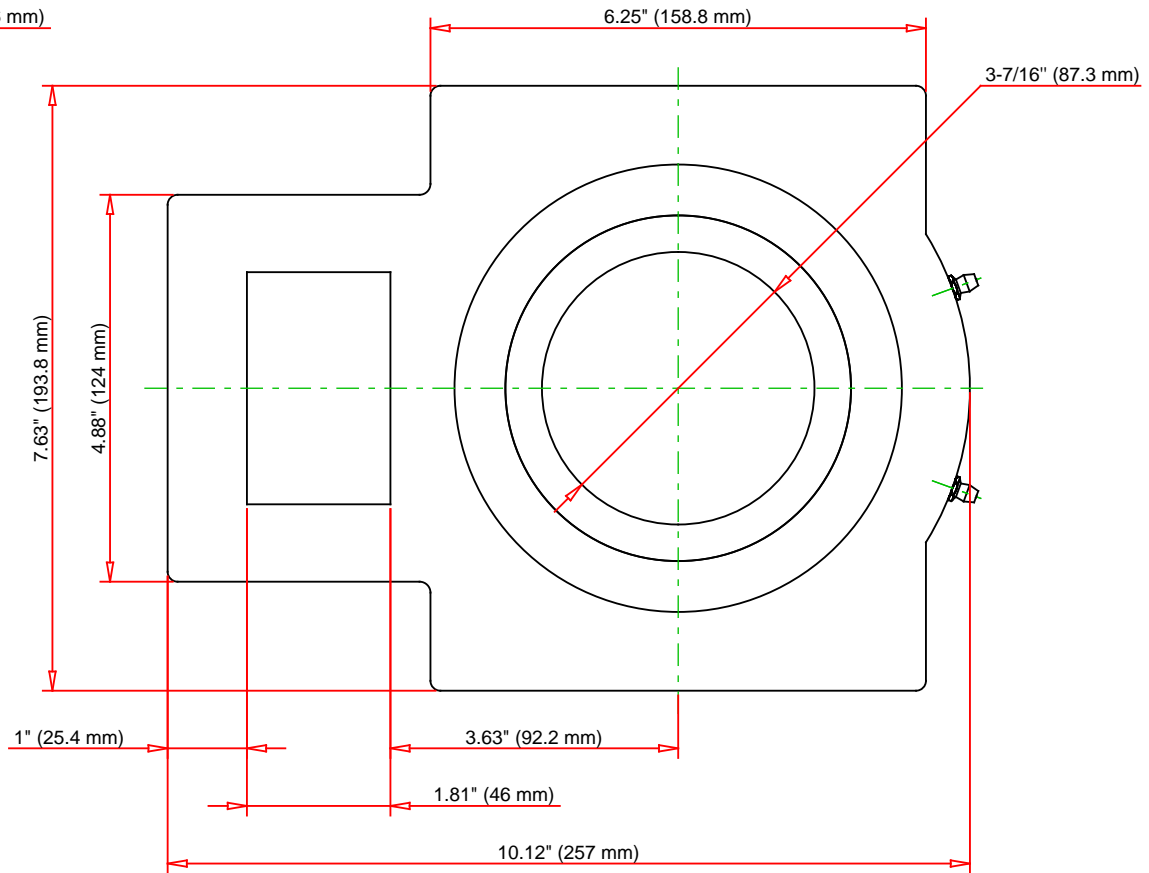
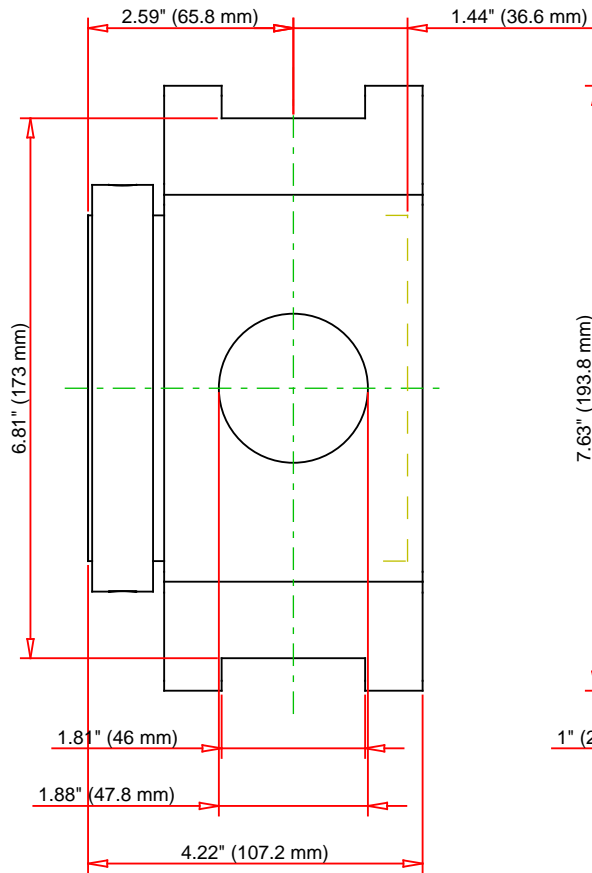
Oil Lubrication - M/N Seal	1400 rpm
Oil Lubrication - T Seal	2400 rpm
Oil Lubrication - B/C/O Seal	1000 rpm
Grease Lubrication - M/N Seal	1400 rpm
Grease Lubrication - T Seal	2000 rpm
Grease Lubrication - B/C/O Seal	1000 rpm

Engineering Bearing Attributes

Float	0.08 in 2.03 mm
Shaft Tolerance	0.0030 in 0.076 mm

Engineering Internal Radial Clearance

Eng Internal Radial Clearance - Min	0.0024
Eng Internal Radial Clearance - Max	0.0039
Pre Install Clearance Min	0.0024 in 0.060 mm
Pre Install Clearance Max	0.0039 in 0.100 mm



Note: Section View not to Scale

C - Dynamic Load	79700	lbf	355000	N
C0 - Static Load	87200	lbf	388000	N
Weight	44	lb	20	kg
Max. Speed T-Seals & Grease	2000	rpm		
Rad. Clearance - Max.	0.0039			

TIMKEN

THE TIMKEN COMPANY
NORTH CANTON, OHIO USA

QATU18A307S

Single Concentric Take-Up Block

Every reasonable effort has been made to ensure the accuracy of the information contained in this writing, but no liability is accepted for errors, omissions or for any other reason.

FOR DISCUSSION ONLY