



The Timken Company

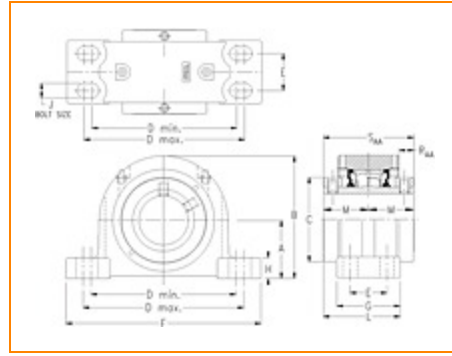
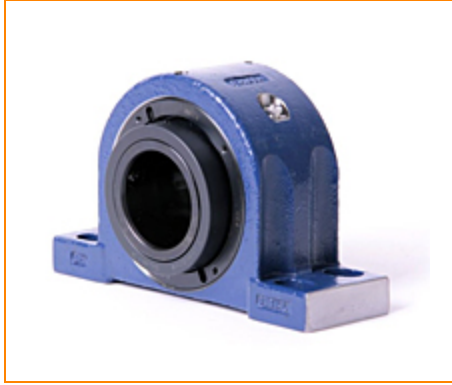
4500 Mt Pleasant St. NW

N. Canton, OH 44720

Phone: (234) 262-3000

E-Mail: CustomerCAD@timken.com • **Web site:** www.timken.com

Part Number QAAPF26A500S, Double Concentric Four-Bolt Pillow Block



[Specifications](#) | [Dimensions](#) | [Radial and Thrust Factors](#) | [Engineering Seal Speed](#) | [Engineering Bearing Attributes](#) | [Engineering Internal Radial Clearance](#)

Specifications

Engineering Group Mounted Bearing

Bearing Number 22226

Shaft Size 5 in

Shaft Size Type Imperial

Full Timken Part Number

- QAAPF26A500SB
- QAAPF26A500SC
- QAAPF26A500SEB
- QAAPF26A500SEC
- QAAPF26A500SEM
- QAAPF26A500SEN
- QAAPF26A500SEO
- QAAPF26A500SET
- QAAPF26A500SM
- QAAPF26A500SN
- QAAPF26A500SO
- QAAPF26A500ST



Locking Style	Double Concentric
----------------------	-------------------

Housing Construction	Four-Bolt Pillow Block
-----------------------------	------------------------

UPC Code	0883450004343
	0883450004411
	0883450266956
	0883450267090
	0883450272988
	0883450272995
	0883450273008
	0883450273015
	0883450273022
	0883450273039
	0883450273046
	0883450273053

Dimensions

Dimension A	5-1/2 in 139.7 mm
--------------------	----------------------

Dimension B	11.01 in 279.7 mm
--------------------	----------------------

Dimension C	6.89 in 175 mm
--------------------	-------------------

Dimension D Min	13 in 330.2 mm
------------------------	-------------------

Dimension D Max	15.88 in 403.4 mm
------------------------	----------------------

Dimension E	2.75 in 69.9 mm
--------------------	--------------------

Dimension F	17-1/2 in 444.5 mm
--------------------	-----------------------

Dimension G	5.04 in 128 mm
--------------------	-------------------

Dimension H	1.54 in 39.1 mm
Dimension J (Bolt Size)	0.875 in 24 mm
Dimension L	6.24 in 158.5 mm
Dimension M	3.72 in 94.5 mm
Dimension RAA	1.45 in 36.8 mm
Dimension SAA	7.44 in 189 mm

Radial and Thrust Factors

C0 - Static Load	212000 lbf 945000 N
C - Dynamic Load (Basic)	170000 lbf 757000 N
e - Geometry Factor	0.26
Y1 - Geometry Factor	2.62
Y2 - Geometry Factor	3.9

Engineering Seal Speed

Oil Lubrication - M/N Seal	700 rpm
Oil Lubrication - T Seal	1500 rpm
Oil Lubrication - B/C/O Seal	400 rpm
Grease Lubrication - M/N Seal	700 rpm

Grease Lubrication - T Seal	1000 rpm
------------------------------------	----------

Grease Lubrication - B/C/O Seal	400 rpm
--	---------

Engineering Bearing Attributes

Float	0.083 in 2.108 mm
--------------	----------------------

Shaft Tolerance	0.0050 in 0.127 mm
------------------------	-----------------------

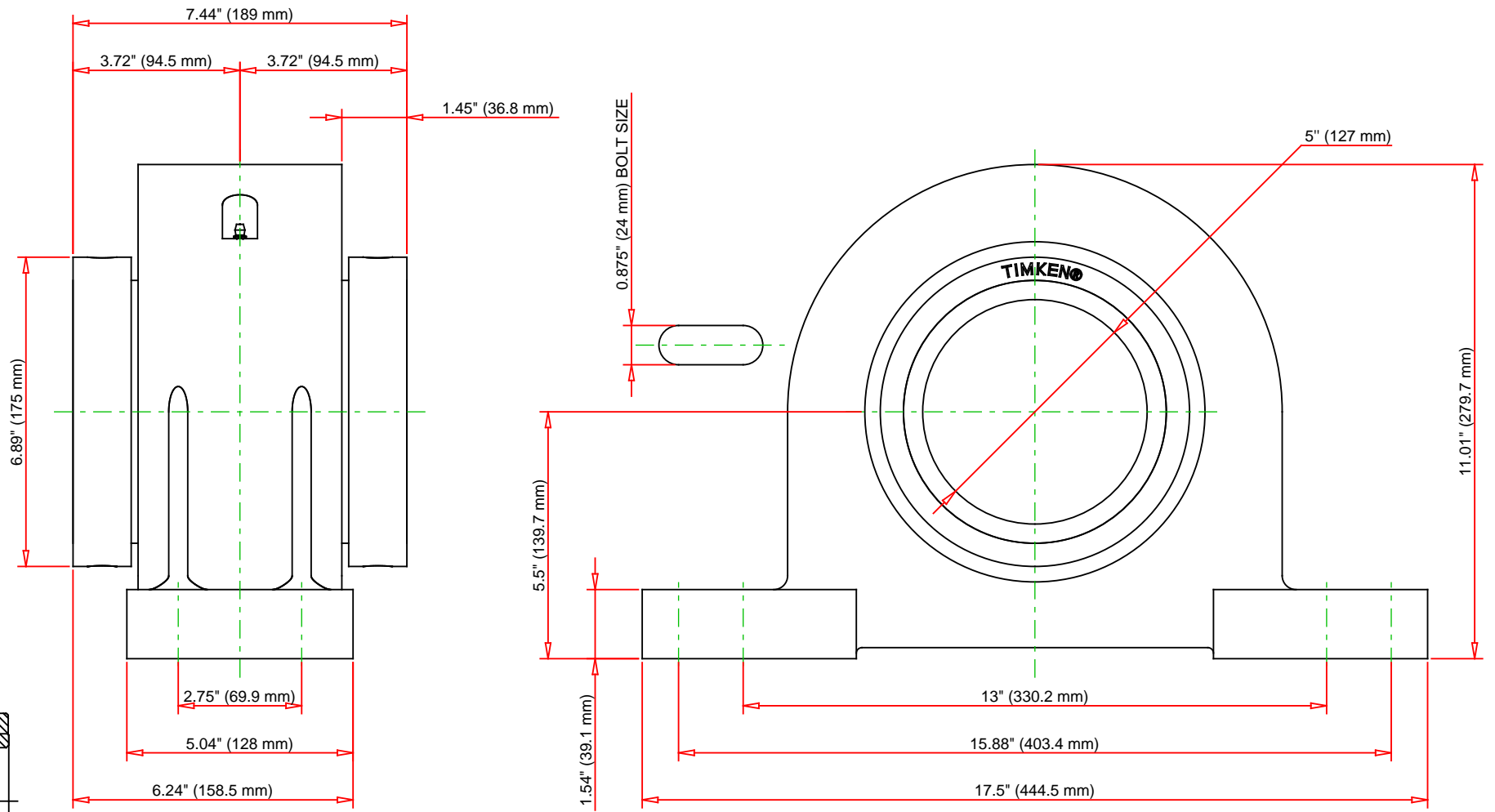
Engineering Internal Radial Clearance

Eng Internal Radial Clearance - Min	0.0037
--	--------

Eng Internal Radial Clearance - Max	0.0057
--	--------

Pre Install Clearance Min	0.0037 in 0.095 mm
----------------------------------	-----------------------

Pre Install Clearance Max	0.0057 in 0.145 mm
----------------------------------	-----------------------



Note: Section View not to Scale

C - Dynamic Load	170000	lbf	757000	N
C0 - Static Load	212000	lbf	945000	N
Weight	134	lb	60.8	kg
Max. Speed T-Seals & Grease	1000	rpm		
Rad. Clearance - Max.	0.0057			

TIMKEN

THE TIMKEN COMPANY
NORTH CANTON, OHIO USA

QAAPF26A500S
Double Concentric Four-Bolt Pillow
Block

Every reasonable effort has been made to ensure the accuracy of the information contained in this writing, but no liability is accepted for errors, omissions or for any other reason.

FOR DISCUSSION ONLY