



The Timken Company

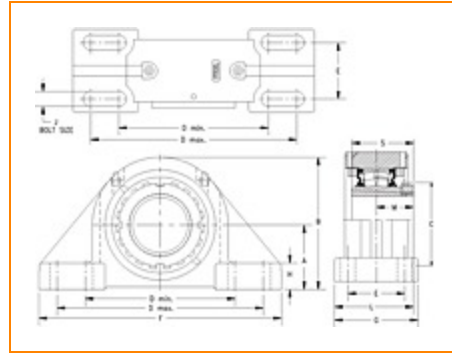
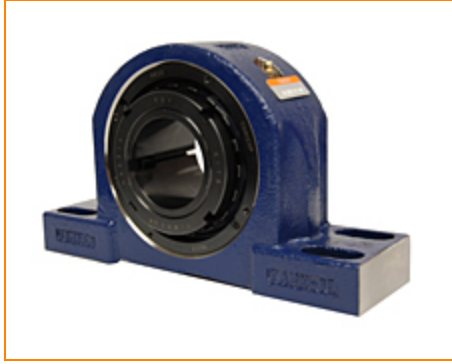
4500 Mt Pleasant St. NW

N. Canton, OH 44720

Phone: (234) 262-3000

E-Mail: CustomerCAD@timken.com • **Web site:** www.timken.com

Part Number TAPK17K215S, Tapered Adapter Four-Bolt Pillow Block



[Specifications](#) | [Dimensions](#) | [Radial and Thrust Factors](#) | [Engineering Seal Speed](#) | [Engineering Bearing Attributes](#) | [Engineering Internal Radial Clearance](#)

Specifications

Engineering Group Mounted Bearing

Bearing Number 22217

Shaft Size 2 15/16 in

Shaft Size Type Imperial

Full Timken Part Number

- TAPK17K215SB
- TAPK17K215SC
- TAPK17K215SEB
- TAPK17K215SEC
- TAPK17K215SEM
- TAPK17K215SEN
- TAPK17K215SEO
- TAPK17K215SET
- TAPK17K215SM
- TAPK17K215SN
- TAPK17K215SO
- TAPK17K215ST



Locking Style	Tapered Adapter
Housing Construction	Four-Bolt Pillow Block
UPC Code	0883450131377 0883450131384 0883450131407 0883450131414 0883450131421 0883450131438 0883450131445 0883450131452 0883450198936 0883450199131 0883450276573 0883450276771

Dimensions

Dimension A	4 in 101.6 mm
Dimension B	7.92 in 201.2 mm
Dimension C	4.33 in 110 mm
Dimension D Min	10.81 in 274.6 mm
Dimension D Max	12.19 in 309.6 mm
Dimension E	3 in 76.2 mm
Dimension F	15 in 381 mm
Dimension G	4.75 in 120.7 mm

Dimension H	1 1/2 in 38.1 mm
Dimension J (Bolt Size)	0.75 in 20 mm
Dimension L	4.34 in 110.2 mm
Dimension M	1.96 in 49.8 mm
Dimension S	3.23 in 82 mm

Radial and Thrust Factors

C0 - Static Load	71900 lbf 320000 N
C - Dynamic Load (Basic)	66900 lbf 297000 N
e - Geometry Factor	0.22
Y1 - Geometry Factor	3.07
Y2 - Geometry Factor	4.57

Engineering Seal Speed

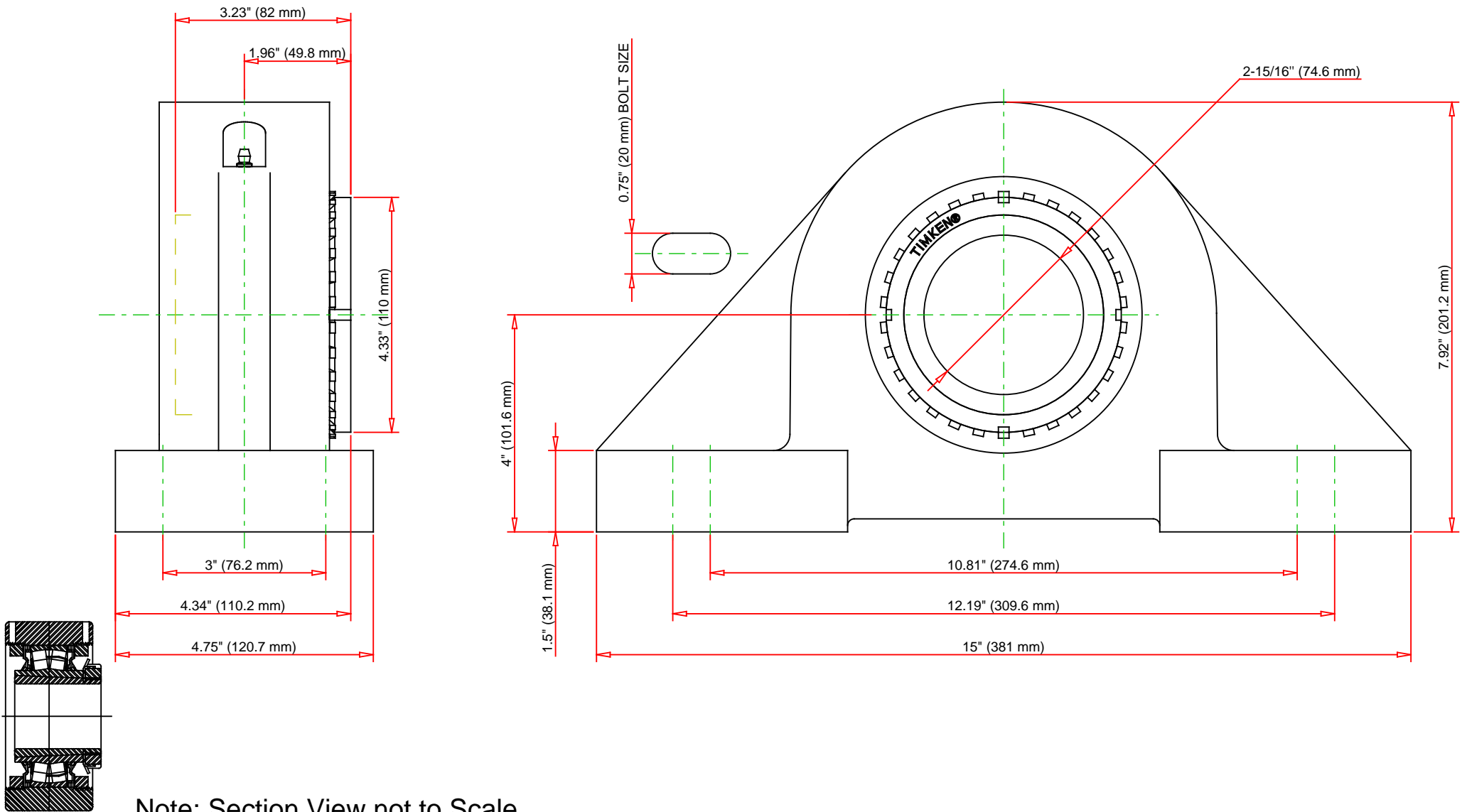
Oil Lubrication - M/N Seal	1400 rpm
Oil Lubrication - T Seal	2400 rpm
Oil Lubrication - B/C/O Seal	1100 rpm
Grease Lubrication - M/N Seal	1400 rpm
Grease Lubrication - T Seal	2000 rpm
Grease Lubrication - B/C/O Seal	1100 rpm

Engineering Bearing Attributes

Float	0.083 in 2.108 mm
Shaft Tolerance	0.0040 in 0.102 mm

Engineering Internal Radial Clearance

Pre Install Clearance Min	0.0043 in 0.109 mm
Pre Install Clearance Max	0.0055 in 0.140 mm



Note: Section View not to Scale

C - Dynamic Load	66900	lbf	297000	N
C0 - Static Load	71900	lbf	320000	N
Weight	37	lb	16.8	kg
Max. Speed T-Seals & Grease	2000	rpm		
Rad. Clearance - Max.				

TIMKEN

THE TIMKEN COMPANY
NORTH CANTON, OHIO USA

TAPK17K215S
Tapered Adapter Four-Bolt Pillow
Block

Every reasonable effort has been made to ensure the accuracy of the information contained in this writing, but no liability is accepted for errors, omissions or for any other reason.

FOR DISCUSSION ONLY