



The Timken Company

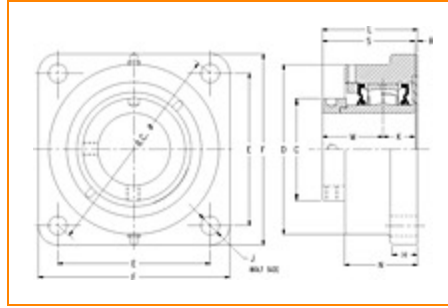
4500 Mt Pleasant St. NW

N. Canton, OH 44720

Phone: (234) 262-3000

E-Mail: CustomerCAD@timken.com • **Web site:** www.timken.com

Part Number QMF11J055S, Eccentric Four Bolt Square Flange Block



[Specifications](#) | [Dimensions](#) | [Radial and Thrust Factors](#) | [Engineering Seal Speed](#) | [Engineering Bearing Attributes](#) | [Engineering Internal Radial Clearance](#)

Specifications

Engineering Group	Mounted Bearing
Bearing Number	22211
Shaft Size	55 mm
Shaft Size Type	Metric
Full Timken Part Number	QMF11J055SB QMF11J055SC QMF11J055SEB QMF11J055SEC QMF11J055SEM QMF11J055SEN QMF11J055SEO QMF11J055SET QMF11J055SM QMF11J055SN QMF11J055SO



QMF11J055ST

Locking Style

Eccentric

Housing Construction

Four-Bolt Square Flange

UPC Code

0883450030793
 0883450030823
 0883450254342
 0883450254823
 0883450262644
 0883450262651
 0883450262668
 0883450262675
 0883450262729
 0883450262736
 0883450262743
 0883450262750

Dimensions**Dimension BC**

6.89 in
 175 mm

Dimension C

2.99 in
 75.9 mm

Dimension D

5.13 in
 130.3 mm

Dimension E

4.88 in
 124 mm

Dimension F

6.19 in
 157.2 mm

Dimension H

1 in
 25.4 mm

Dimension J (Bolt Size)

0.625 in
 16 mm

Dimension K

1.13 in
 28.7 mm

Dimension L Exp	3.34 in 84.8 mm
------------------------	--------------------

Dimension L Fix	3.26 in 82.8 mm
------------------------	--------------------

Dimension M	1.99 in 50.5 mm
--------------------	--------------------

Dimension N	2.63 in 66.8 mm
--------------------	--------------------

Dimension R	0.13 in 3.3 mm
--------------------	-------------------

Dimension S	3.12 in 79.2 mm
--------------------	--------------------

Radial and Thrust Factors

C0 - Static Load	31900 lbf 142000 N
-------------------------	-----------------------

C - Dynamic Load (Basic)	31400 lbf 140000 N
---------------------------------	-----------------------

e - Geometry Factor	0.25
----------------------------	------

Y1 - Geometry Factor	2.74
-----------------------------	------

Y2 - Geometry Factor	4.08
-----------------------------	------

Engineering Seal Speed

Oil Lubrication - M/N Seal	2200 rpm
-----------------------------------	----------

Oil Lubrication - T Seal	3800 rpm
---------------------------------	----------

Oil Lubrication - B/C/O Seal	1600 rpm
-------------------------------------	----------

Grease Lubrication - M/N Seal	2200 rpm
--------------------------------------	----------

Grease Lubrication - T Seal	3200 rpm
------------------------------------	----------

Grease Lubrication - B/C/O Seal	1600 rpm
--	----------

Engineering Bearing Attributes

Float	0.050 in 1.270 mm
--------------	----------------------

Shaft Tolerance	0.0015 in 0.038 mm
------------------------	-----------------------

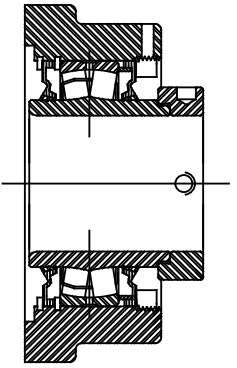
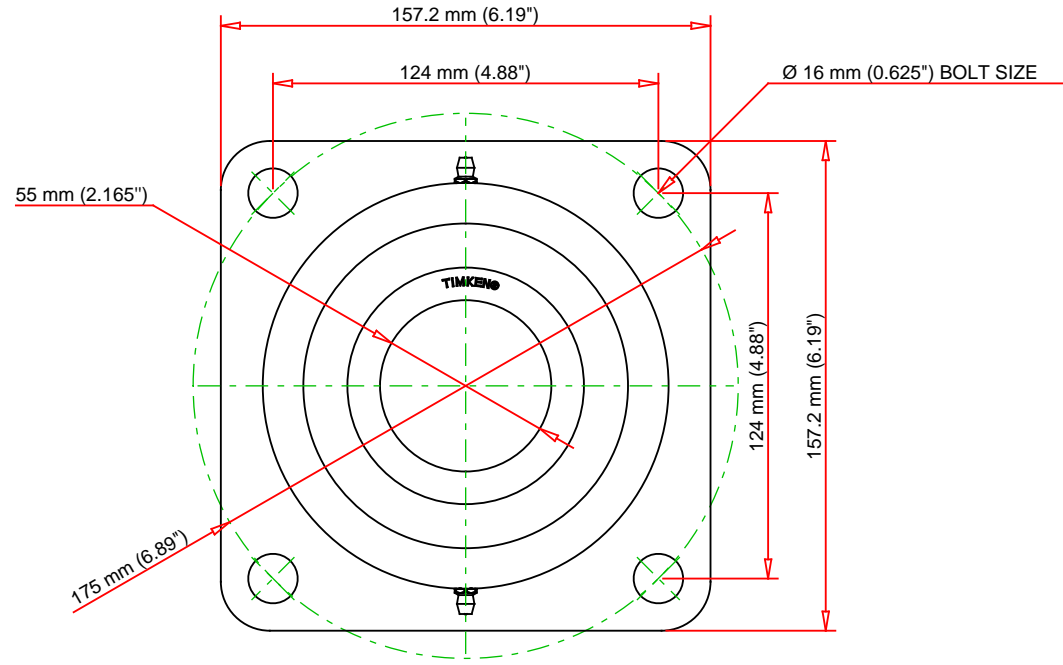
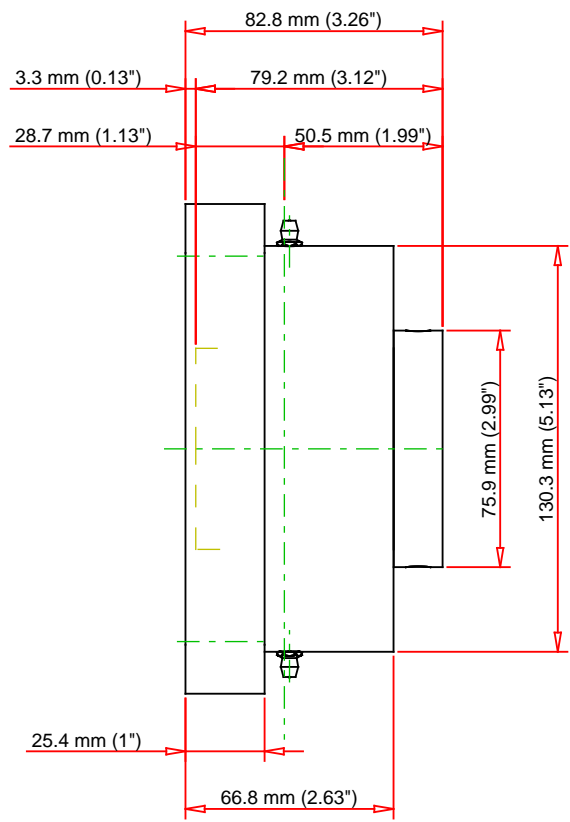
Engineering Internal Radial Clearance

Eng Internal Radial Clearance - Min	0.0016
--	--------

Eng Internal Radial Clearance - Max	0.0026
--	--------

Pre Install Clearance Min	0.0016 in 0.040 mm
----------------------------------	-----------------------

Pre Install Clearance Max	0.0026 in 0.065 mm
----------------------------------	-----------------------



Note: Section View not to Scale

C - Dynamic Load	31400	lbf	140000	N
C0 - Static Load	31900	lbf	142000	N
Weight	14	lb	6.4	kg
Max. Speed T-Seals & Grease	3200	rpm		
Rad. Clearance - Max.	0.0026			

TIMKEN
 THE TIMKEN COMPANY
 NORTH CANTON, OHIO USA

QMF11J055S
 Eccentric Four Bolt Square Flange
 Block

Every reasonable effort has been made to ensure the accuracy of the information contained in this writing, but no liability is accepted for errors, omissions or for any other reason.

FOR DISCUSSION ONLY