



The Timken Company

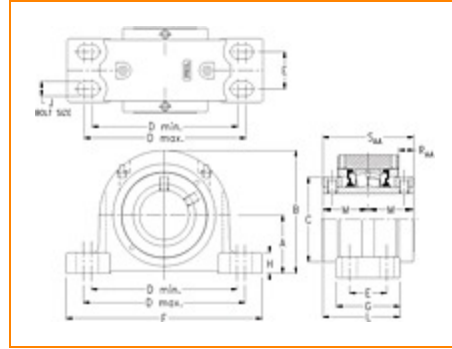
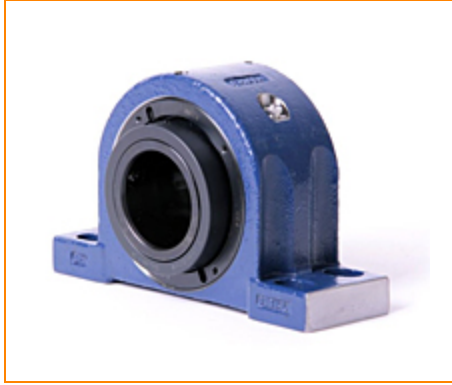
4500 Mt Pleasant St. NW

N. Canton, OH 44720

Phone: (234) 262-3000

E-Mail: CustomerCAD@timken.com • **Web site:** www.timken.com

Part Number QAAPR18A303S, Double Concentric Four-Bolt Pillow Block



[Specifications](#) | [Dimensions](#) | [Radial and Thrust Factors](#) | [Engineering Seal Speed](#) | [Engineering Bearing Attributes](#) | [Engineering Internal Radial Clearance](#)

Specifications

Engineering Group Mounted Bearing

Bearing Number 22218

Shaft Size 3 3/16 in

Shaft Size Type Imperial

Full Timken Part Number

- QAAPR18A303SB
- QAAPR18A303SC
- QAAPR18A303SEB
- QAAPR18A303SEC
- QAAPR18A303SEM
- QAAPR18A303SEN
- QAAPR18A303SEO
- QAAPR18A303SET
- QAAPR18A303SM
- QAAPR18A303SN
- QAAPR18A303SO
- QAAPR18A303ST



Locking Style	Double Concentric
----------------------	-------------------

Housing Construction	Four-Bolt Pillow Block
-----------------------------	------------------------

UPC Code	0883450322133
	0883450322140
	0883450322157
	0883450322164
	0883450322171
	0883450322188
	0883450322195
	0883450322201
	0883450322218
	0883450322225
0883450322232	
0883450322249	

Dimensions

Dimension A	3-3/4 in 95.3 mm
--------------------	---------------------

Dimension B	7.69 in 195.3 mm
--------------------	---------------------

Dimension C	5.13 in 130.3 mm
--------------------	---------------------

Dimension D Min	9.25 in 235 mm
------------------------	-------------------

Dimension D Max	11.25 in 285.8 mm
------------------------	----------------------

Dimension E	2.38 in 60.5 mm
--------------------	--------------------

Dimension F	13.63 in 346.2 mm
--------------------	----------------------

Dimension G	3.75 in 95.3 mm
--------------------	--------------------

Dimension H	1.56 in 39.6 mm
Dimension J (Bolt Size)	0.75 in 20 mm
Dimension L	4.47 in 113.5 mm
Dimension M	2.59 in 65.8 mm
Dimension RAA	0.84 in 21.3 mm
Dimension SAA	5.18 in 131.6 mm

Radial and Thrust Factors

C0 - Static Load	87200 lbf 388000 N
C - Dynamic Load (Basic)	79700 lbf 355000 N
e - Geometry Factor	0.23
Y1 - Geometry Factor	2.90
Y2 - Geometry Factor	4.31

Engineering Seal Speed

Oil Lubrication - M/N Seal	1400 rpm
Oil Lubrication - T Seal	2400 rpm
Oil Lubrication - B/C/O Seal	1000 rpm
Grease Lubrication - M/N Seal	1400 rpm

Grease Lubrication - T Seal	2000 rpm
------------------------------------	----------

Grease Lubrication - B/C/O Seal	1000 rpm
--	----------

Engineering Bearing Attributes

Float	0.083 in 2.108 mm
--------------	----------------------

Shaft Tolerance	0.0030 in 0.076 mm
------------------------	-----------------------

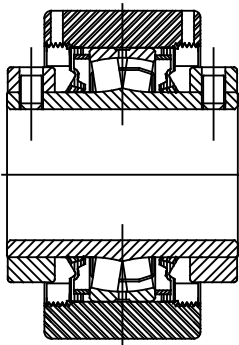
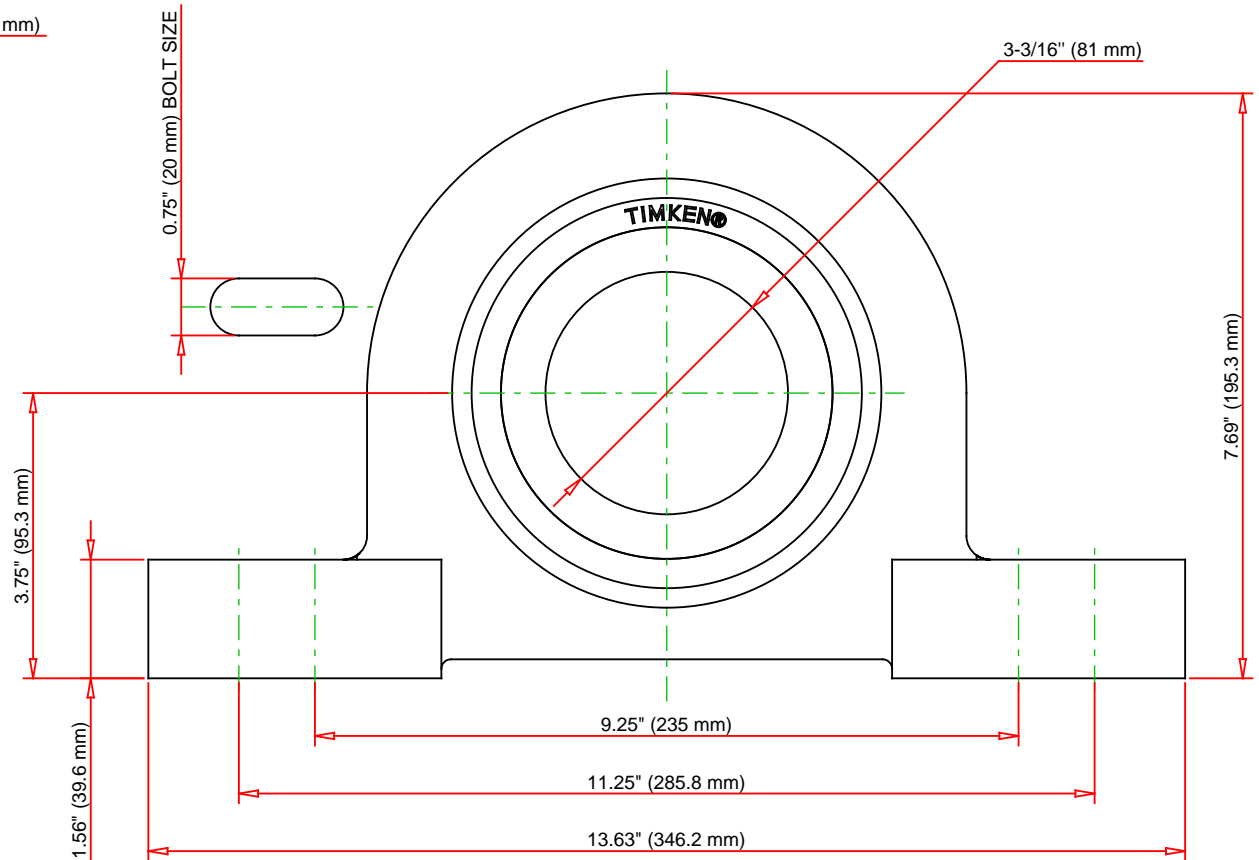
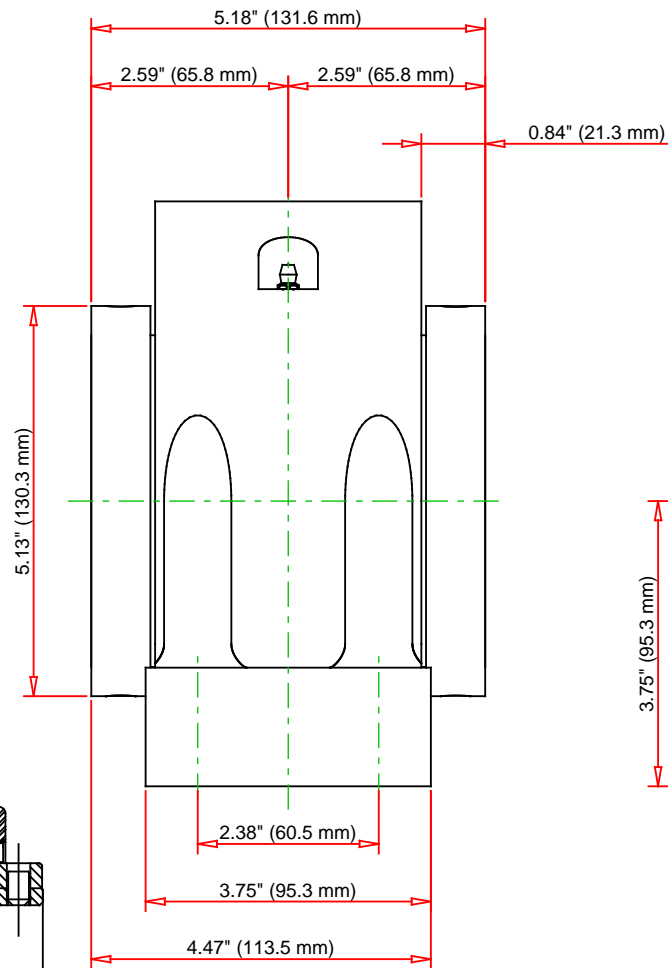
Engineering Internal Radial Clearance

Eng Internal Radial Clearance - Min	0.0024
--	--------

Eng Internal Radial Clearance - Max	0.0039
--	--------

Pre Install Clearance Min	0.0024 in 0.060 mm
----------------------------------	-----------------------

Pre Install Clearance Max	0.0039 in 0.100 mm
----------------------------------	-----------------------



Note: Section View not to Scale

C - Dynamic Load	79700	lbf	355000	N
C0 - Static Load	87200	lbf	388000	N
Weight	49	lb	22.2	kg
Max. Speed T-Seals & Grease	2000	rpm		
Rad. Clearance - Max.	0.0039			

TIMKEN

THE TIMKEN COMPANY
NORTH CANTON, OHIO USA

QAAPR18A303S
Double Concentric Four-Bolt Pillow
Block

Every reasonable effort has been made to ensure the accuracy of the information contained in this writing, but no liability is accepted for errors, omissions or for any other reason.

FOR DISCUSSION ONLY