



**The Timken Company**

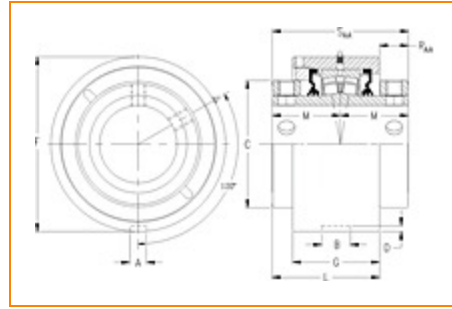
4500 Mt Pleasant St. NW

N. Canton, OH 44720

**Phone:** (234) 262-3000

**E-Mail:** [CustomerCAD@timken.com](mailto:CustomerCAD@timken.com) • **Web site:** [www.timken.com](http://www.timken.com)

## Part Number QAAMC26A500S, Double Concentric Cartridge Block



[Specifications](#) | [Dimensions](#) | [Radial and Thrust Factors](#) | [Engineering Seal Speed](#) | [Engineering Bearing Attributes](#) | [Engineering Internal Radial Clearance](#)

### Specifications

**Engineering Group** Mounted Bearing

**Bearing Number** 22226

**Shaft Size** 5 in

**Shaft Size Type** Imperial

**Full Timken Part Number**

- QAAMC26A500SB
- QAAMC26A500SC
- QAAMC26A500SEB
- QAAMC26A500SEC
- QAAMC26A500SEM
- QAAMC26A500SEN
- QAAMC26A500SEO
- QAAMC26A500SET
- QAAMC26A500SM
- QAAMC26A500SN
- QAAMC26A500SO
- QAAMC26A500ST



<b>Locking Style</b>	Double Concentric
----------------------	-------------------

<b>Housing Construction</b>	Cartridge
-----------------------------	-----------

<b>UPC Code</b>	0883450310734
	0883450310741
	0883450310758
	0883450310765
	0883450310772
	0883450310789
	0883450310796
	0883450310802
	0883450310819
	0883450310826
	0883450310833
	0883450310840

## Dimensions

<b>Dimension A</b>	0.78 in 19.8 mm
--------------------	--------------------

<b>Dimension B</b>	1.5 in 38.1 mm
--------------------	-------------------

<b>Dimension C</b>	6.89 in 175 mm
--------------------	-------------------

<b>Dimension D</b>	0.31 in 7.9 mm
--------------------	-------------------

<b>Dimension F</b>	10.438 in 265.1 mm
--------------------	-----------------------

<b>Dimension G</b>	5.58 in 141.7 mm
--------------------	---------------------

<b>Dimension L Exp</b>	6.59 in 167.4 mm
------------------------	---------------------

<b>Dimension L Fix</b>	6.51 in 165.4 mm
------------------------	---------------------

<b>Dimension M</b>	3.72 in 94.5 mm
--------------------	--------------------

<b>Dimension RAA</b>	0.93 in 23.6 mm
----------------------	--------------------

<b>Dimension SAA</b>	7.44 in 189 mm
----------------------	-------------------

## Radial and Thrust Factors

<b>C0 - Static Load</b>	212000 lbf 945000 N
-------------------------	------------------------

<b>C - Dynamic Load (Basic)</b>	170000 lbf 757000 N
---------------------------------	------------------------

<b>e - Geometry Factor</b>	0.26
----------------------------	------

<b>Y1 - Geometry Factor</b>	2.62
-----------------------------	------

<b>Y2 - Geometry Factor</b>	3.9
-----------------------------	-----

## Engineering Seal Speed

<b>Oil Lubrication - M/N Seal</b>	700 rpm
-----------------------------------	---------

<b>Oil Lubrication - T Seal</b>	1500 rpm
---------------------------------	----------

<b>Oil Lubrication - B/C/O Seal</b>	400 rpm
-------------------------------------	---------

<b>Grease Lubrication - M/N Seal</b>	700 rpm
--------------------------------------	---------

<b>Grease Lubrication - T Seal</b>	1000 rpm
------------------------------------	----------

<b>Grease Lubrication - B/C/O Seal</b>	400 rpm
--	---------

## Engineering Bearing Attributes

<b>Float</b>	0.083 in 2.108 mm
--------------	----------------------

<b>Shaft Tolerance</b>	0.0050 in 0.127 mm
------------------------	-----------------------

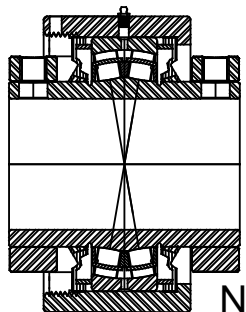
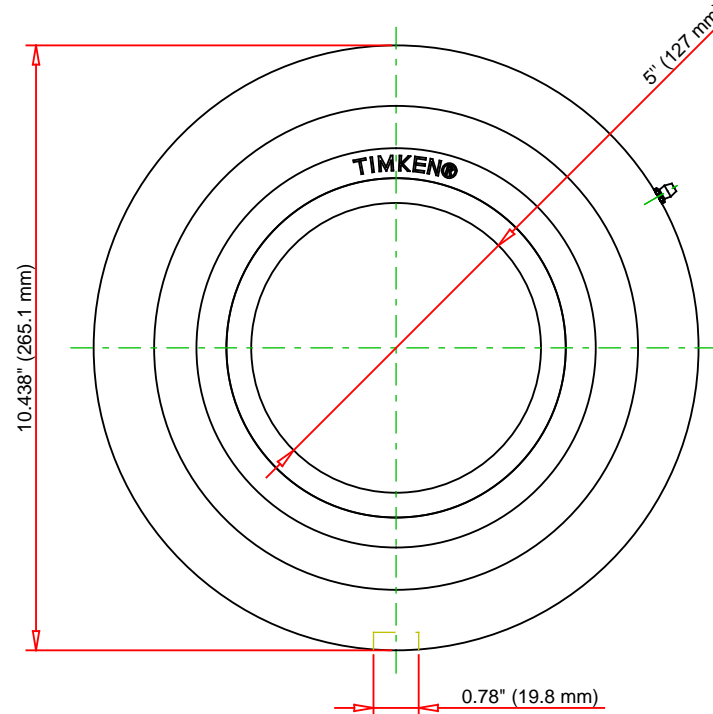
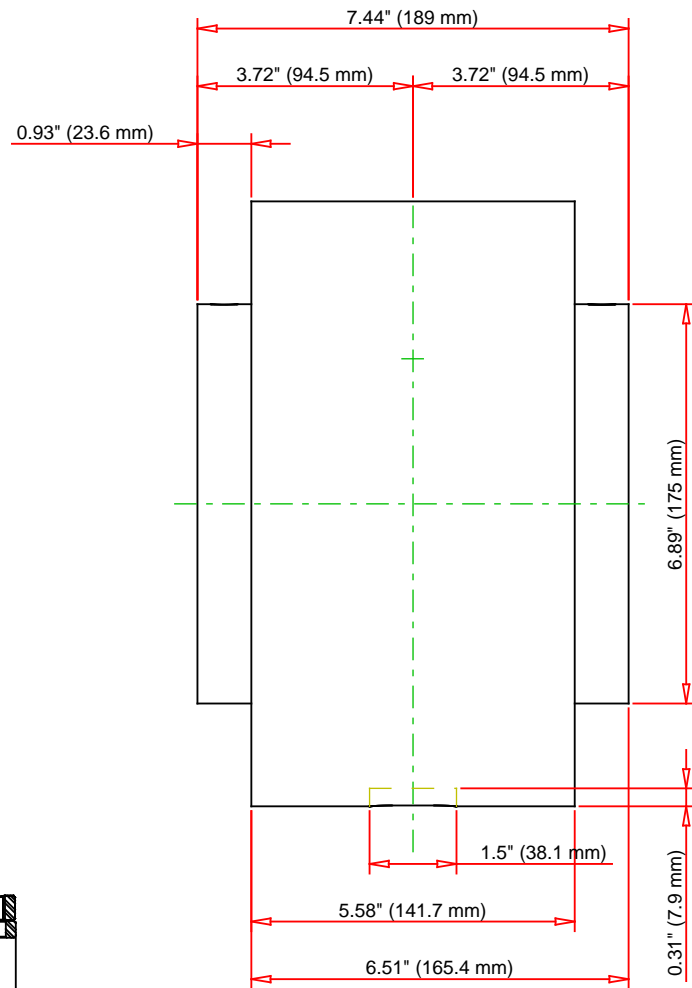
## Engineering Internal Radial Clearance

<b>Eng Internal Radial Clearance - Min</b>	0.0037
--	--------

<b>Eng Internal Radial Clearance - Max</b>	0.0057
--	--------

<b>Pre Install Clearance Min</b>	0.0037 in 0.095 mm
----------------------------------	-----------------------

<b>Pre Install Clearance Max</b>	0.0057 in 0.145 mm
----------------------------------	-----------------------



Note: Section View not to Scale

C - Dynamic Load	170000	lbf	757000	N
C0 - Static Load	212000	lbf	945000	N
Weight	40	lb	18.1	kg
Max. Speed T-Seals & Grease	1000	rpm		
Rad. Clearance - Max.	0.0057			

**TIMKEN**

THE TIMKEN COMPANY  
NORTH CANTON, OHIO USA

**QAAMC26A500S**

Double Concentric Cartridge Block

Every reasonable effort has been made to ensure the accuracy of the information contained in this writing, but no liability is accepted for errors, omissions or for any other reason.

**FOR DISCUSSION ONLY**