



The Timken Company

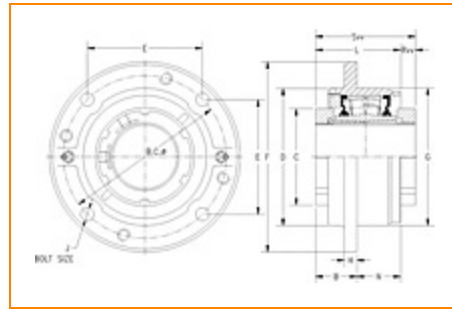
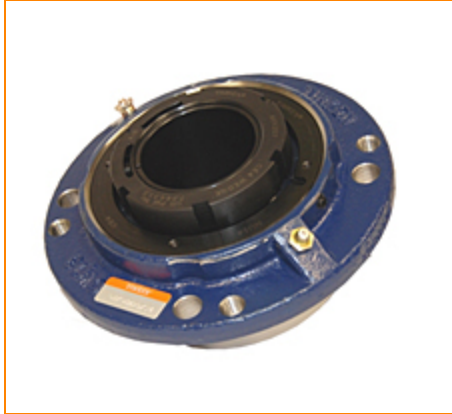
4500 Mt Pleasant St. NW

N. Canton, OH 44720

Phone: (234) 262-3000

E-Mail: CustomerCAD@timken.com • **Web site:** www.timken.com

Part Number QVVCW22V400S, Double V-Lock Piloted Flange Cartridge



[Specifications](#) | [Dimensions](#) | [Radial and Thrust Factors](#) | [Engineering Seal Speed](#) | [Engineering Bearing Attributes](#) | [Engineering Internal Radial Clearance](#)

Specifications

Engineering Group Mounted Bearing

Bearing Number 22222

Shaft Size 4 in

Shaft Size Type Imperial

Full Timken Part Number

- QVVCW22V400SB
- QVVCW22V400SC
- QVVCW22V400SEB
- QVVCW22V400SEC
- QVVCW22V400SEM
- QVVCW22V400SEN
- QVVCW22V400SEO
- QVVCW22V400SET
- QVVCW22V400SM
- QVVCW22V400SN
- QVVCW22V400SO
- QVVCW22V400ST



Locking Style	Double V-Lock
Housing Construction	Piloted Flange Cartridge

UPC Code	0883450186285
	0883450186476
	0883450186667
	0883450186742
	0883450186933
	0883450187121
	0883450214070
	0883450214452
	0883450226493
	0883450226875
0883450238915	
0883450239295	

Dimensions

Dimension BC 9.38 in
238.3 mm

Dimension C 5.5 in
139.7 mm

Dimension D 8.76 in
222.5 mm

Dimension E 6.63 in
168.4 mm

Dimension B Exp 2.11 in
53.6 mm

Dimension B Fix 2.03 in
51.6 mm

Dimension F 10.88 in
276.4 mm

Dimension H 1 in
25.4 mm

Dimension J (Bolt Size)	0.75 in 20 mm
Dimension L	4.32 in 109.7 mm
Dimension RVV	0.68 in 17.3 mm
Dimension SVV	4.99 in 126.7 mm
Dimension G	8.125 in 206.4 mm
Dimension N	2.25 in 57.2 mm

Radial and Thrust Factors

C0 - Static Load	147000 lbf 653000 N
C - Dynamic Load (Basic)	125000 lbf 555000 N
e - Geometry Factor	0.25
Y1 - Geometry Factor	2.73
Y2 - Geometry Factor	4.06

Engineering Seal Speed

Oil Lubrication - M/N Seal	900 rpm
Oil Lubrication - T Seal	1700 rpm
Oil Lubrication - B/C/O Seal	600 rpm
Grease Lubrication - M/N Seal	900 rpm

Grease Lubrication - T Seal	1200 rpm
------------------------------------	----------

Grease Lubrication - B/C/O Seal	600 rpm
--	---------

Engineering Bearing Attributes

Float	0.083 in 2.108 mm
--------------	----------------------

Shaft Tolerance	0.0030 in 0.076 mm
------------------------	-----------------------

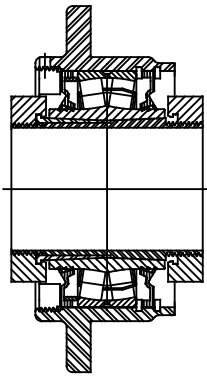
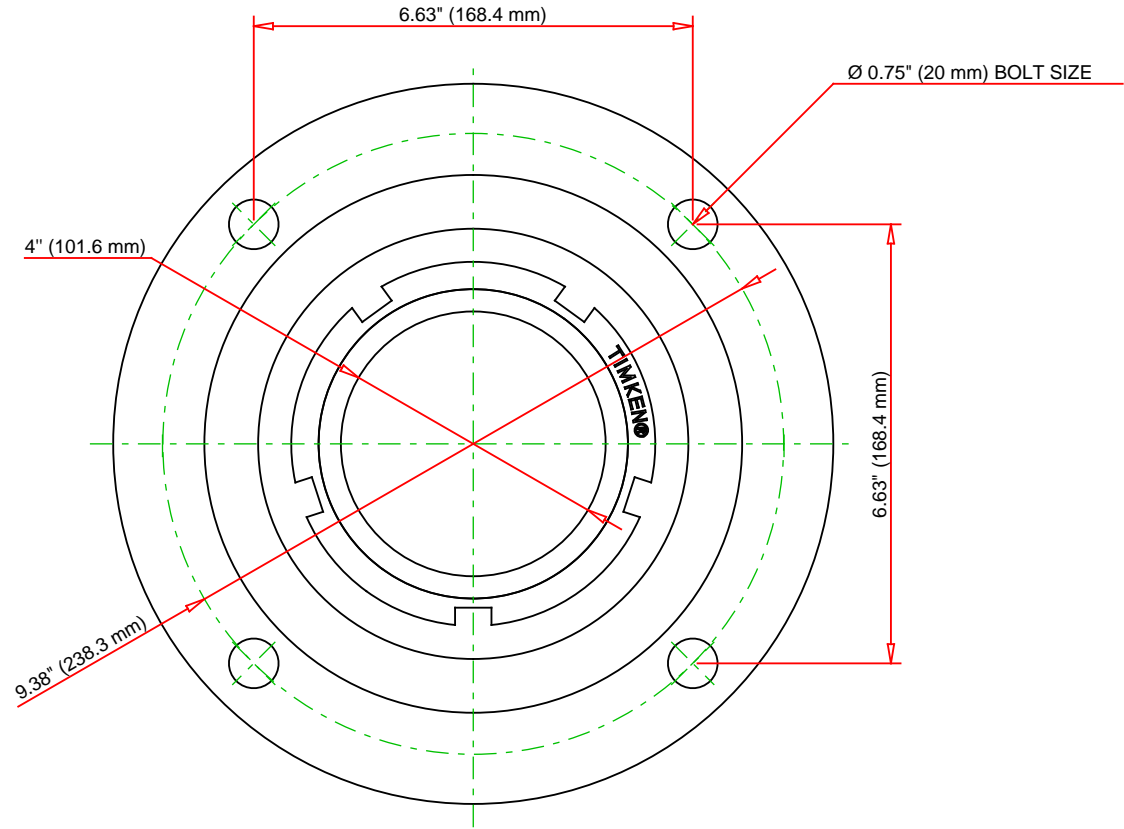
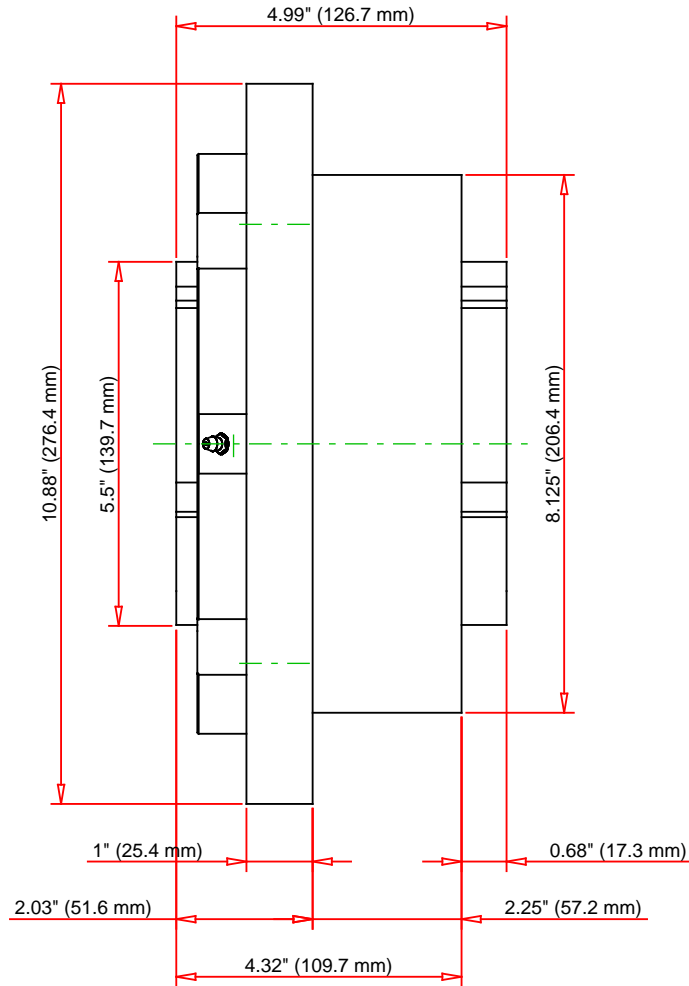
Engineering Internal Radial Clearance

Eng Internal Radial Clearance - Min	0.0053
--	--------

Eng Internal Radial Clearance - Max	0.0067
--	--------

Pre Install Clearance Min	0.0053 in 0.135 mm
----------------------------------	-----------------------

Pre Install Clearance Max	0.0067 in 0.170 mm
----------------------------------	-----------------------



Note: Section View not to Scale

C - Dynamic Load	125000	lbf	555000	N
C0 - Static Load	147000	lbf	653000	N
Weight	43	lb	19.5	kg
Max. Speed T-Seals & Grease	1200	rpm		
Rad. Clearance - Max.	0.0067			

TIMKEN

THE TIMKEN COMPANY
NORTH CANTON, OHIO USA

QVVCW22V400S
Double V-Lock Piloted Flange
Cartridge

Every reasonable effort has been made to ensure the accuracy of the information contained in this writing, but no liability is accepted for errors, omissions or for any other reason.

FOR DISCUSSION ONLY