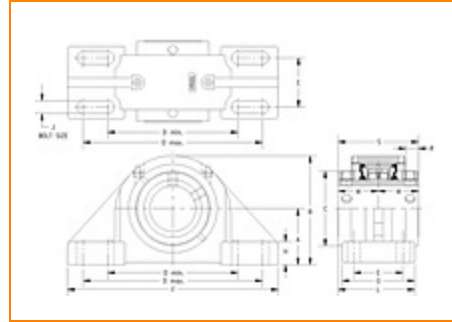
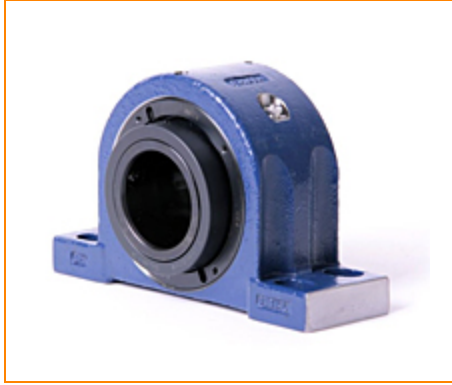



The Timken Company

4500 Mt Pleasant St. NW

N. Canton, OH 44720

Phone: (234) 262-3000

E-Mail: CustomerCAD@timken.com • **Web site:** www.timken.com
Part Number QAAPX22A407S, Double Concentric Four-Bolt Pillow Block


[Specifications](#) | [Dimensions](#) | [Radial and Thrust Factors](#) | [Engineering Seal Speed](#) | [Engineering Bearing Attributes](#) | [Engineering Internal Radial Clearance](#)

Specifications

Engineering Group Mounted Bearing

Bearing Number 22222

Shaft Size 4 7/16 in

Shaft Size Type Imperial

Full Timken Part Number
 QAAPX22A407SB
 QAAPX22A407SC
 QAAPX22A407SEB
 QAAPX22A407SEC
 QAAPX22A407SEM
 QAAPX22A407SEN
 QAAPX22A407SEO
 QAAPX22A407SET
 QAAPX22A407SM
 QAAPX22A407SN



QAAPX22A407SO
QAAPX22A407ST
QAAPX22A407STNG

Locking Style Double Concentric

Housing Construction Four-Bolt Pillow Block

UPC Code

0883450032803
0883450032810
0883450032834
0883450032841
0883450032858
0883450032865
0883450032872
0883450032889
0883450190381
0883450190602
0883450267748
0883450267960
0883450432955

Dimensions

Dimension A

5-3/4 in
146.1 mm

Dimension B

10.78 in
273.8 mm

Dimension C

6.29 in
159.8 mm

Dimension D Min

13.94 in
354.1 mm

Dimension D Max

15.56 in
395.2 mm

Dimension E

4 in
101.6 mm

Dimension F

18-1/2 in
469.9 mm

Dimension G	6-1/4 in 158.8 mm
Dimension H	1.8 in 45.7 mm
Dimension J (Bolt Size)	1 in 24 mm
Dimension L	6.25 in 158.8 mm
Dimension M	3.13 in 79.5 mm
Dimension RAA	1.13 in 28.7 mm
Dimension SAA	6.25 in 158.8 mm

Radial and Thrust Factors

C0 - Static Load	147000 lbf 653000 N
C - Dynamic Load (Basic)	125000 lbf 555000 N
e - Geometry Factor	0.25
Y1 - Geometry Factor	2.73
Y2 - Geometry Factor	4.06

Engineering Seal Speed

Oil Lubrication - M/N Seal	900 rpm
Oil Lubrication - T Seal	1700 rpm
Oil Lubrication - B/C/O Seal	600 rpm

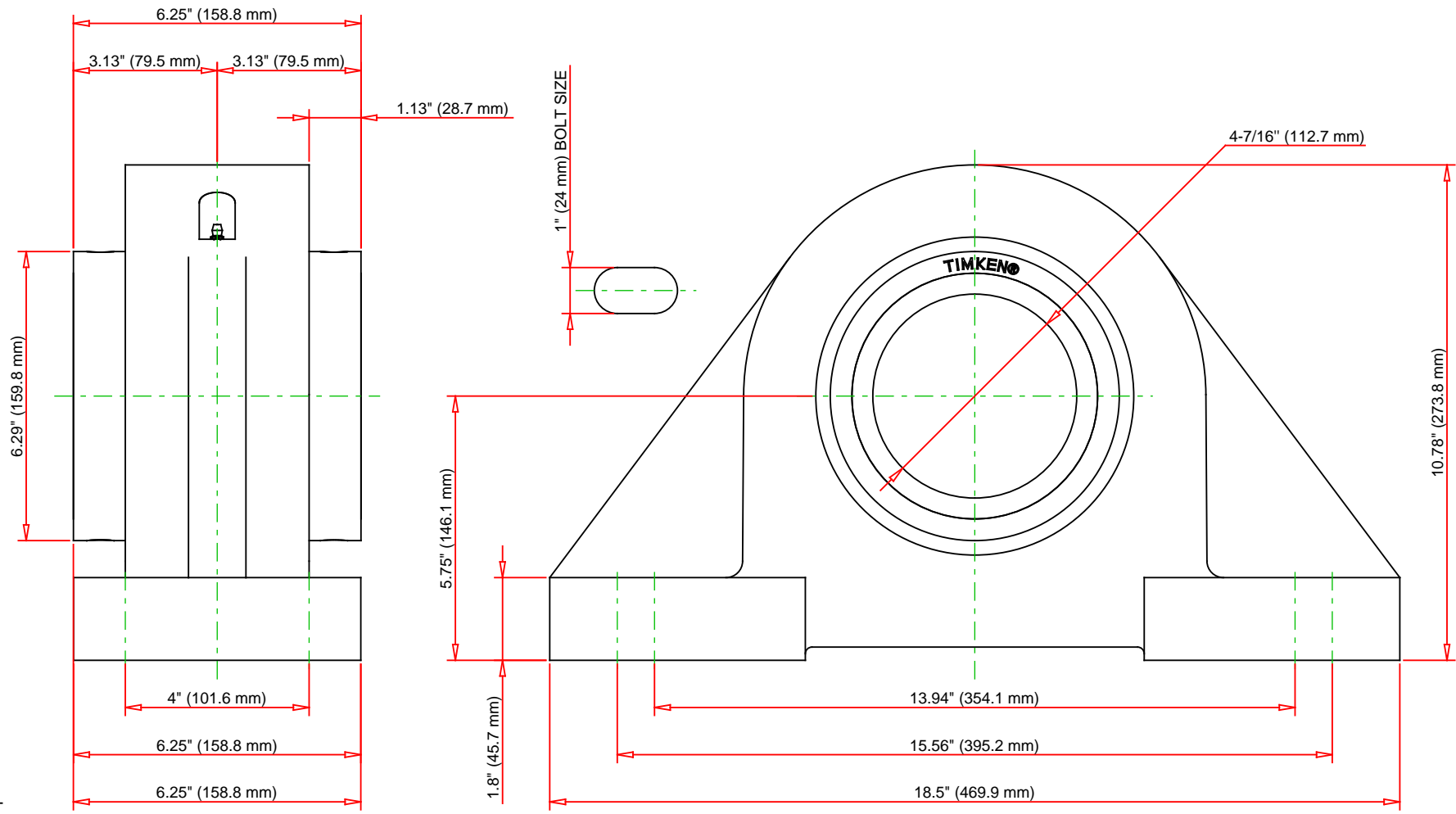
Grease Lubrication - M/N Seal	900 rpm
Grease Lubrication - T Seal	1200 rpm
Grease Lubrication - B/C/O Seal	600 rpm

Engineering Bearing Attributes

Float	0.083 in 2.108 mm
Shaft Tolerance	0.0050 in 0.127 mm

Engineering Internal Radial Clearance

Eng Internal Radial Clearance - Min	0.0030
Eng Internal Radial Clearance - Max	0.0047
Pre Install Clearance Min	0.0030 in 0.075 mm
Pre Install Clearance Max	0.0047 in 0.120 mm



Note: Section View not to Scale

C - Dynamic Load	125000	lbf	555000	N
C0 - Static Load	147000	lbf	653000	N
Weight	139	lb	63.1	kg
Max. Speed T-Seals & Grease	1200	rpm		
Rad. Clearance - Max.	0.0047			

TIMKEN

THE TIMKEN COMPANY
NORTH CANTON, OHIO USA

QAAPX22A407S
Double Concentric Four-Bolt Pillow
Block

Every reasonable effort has been made to ensure the accuracy of the information contained in this writing, but no liability is accepted for errors, omissions or for any other reason.

FOR DISCUSSION ONLY