


The Timken Company

4500 Mt Pleasant St. NW

N. Canton, OH 44720

Phone: (234) 262-3000

E-Mail: CustomerCAD@timken.com • **Web site:** www.timken.com

Part Number QAC10A200S, Single Concentric Piloted Flange Cartridge



[Specifications](#) | [Dimensions](#) | [Radial and Thrust Factors](#) | [Engineering Seal Speed](#) | [Engineering Bearing Attributes](#) | [Engineering Internal Radial Clearance](#)

Specifications

Engineering Group	Mounted Bearing
Bearing Number	22210
Shaft Size	2 in
Shaft Size Type	Imperial
Full Timken Part Number	QAC10A200SB QAC10A200SC QAC10A200SEB QAC10A200SEC QAC10A200SEM QAC10A200SEN QAC10A200SEO QAC10A200SET QAC10A200SM QAC10A200SN QAC10A200SO QAC10A200ST



Locking Style	Single Concentric
----------------------	-------------------

Housing Construction	Piloted Flange Cartridge
-----------------------------	--------------------------

UPC Code	0883450034807
	0883450034814
	0883450034838
	0883450034845
	0883450034852
	0883450034869
	0883450034876
	0883450034883
	0883450193146
	0883450193306
0883450270335	
0883450270496	

Dimensions

Dimension BC	5.38 in 136.7 mm
---------------------	---------------------

Dimension B Exp	2.02 in 51.3 mm
------------------------	--------------------

Dimension B Fix	1.97 in 50 mm
------------------------	------------------

Dimension C	2.88 in 73.2 mm
--------------------	--------------------

Dimension D	4.47 in 113.5 mm
--------------------	---------------------

Dimension E	3.8 in 96.5 mm
--------------------	-------------------

Dimension F	6.38 in 162.1 mm
--------------------	---------------------

Dimension G	4.5 in 114.3 mm
--------------------	--------------------

Dimension H	0.63 in 16 mm
Dimension J (Bolt Size)	0.438 in 10 mm
Dimension KA	1 in 25.4 mm
Dimension L Exp	3.08 in 78.2 mm
Dimension L Fix	3.03 in 77 mm
Dimension M	1.87 in 47.5 mm
Dimension N	1.06 in 26.9 mm
Dimension RA	0.16 in 4.1 mm
Dimension SA	2.87 in 72.9 mm

Radial and Thrust Factors

C0 - Static Load	26600 lbf 118000 N
C - Dynamic Load (Basic)	26300 lbf 117000 N
e - Geometry Factor	0.24
Y1 - Geometry Factor	2.84
Y2 - Geometry Factor	4.23

Engineering Seal Speed

Oil Lubrication - M/N Seal	2400 rpm
-----------------------------------	----------

Oil Lubrication - T Seal	4200 rpm
---------------------------------	----------

Oil Lubrication - B/C/O Seal	1800 rpm
-------------------------------------	----------

Grease Lubrication - M/N Seal	2400 rpm
--------------------------------------	----------

Grease Lubrication - T Seal	3550 rpm
------------------------------------	----------

Grease Lubrication - B/C/O Seal	1800 rpm
--	----------

Engineering Bearing Attributes

Float	0.050 in 1.270 mm
--------------	----------------------

Shaft Tolerance	0.0015 in 0.038 mm
------------------------	-----------------------

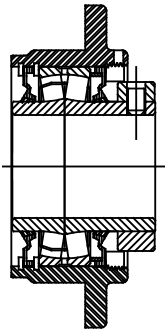
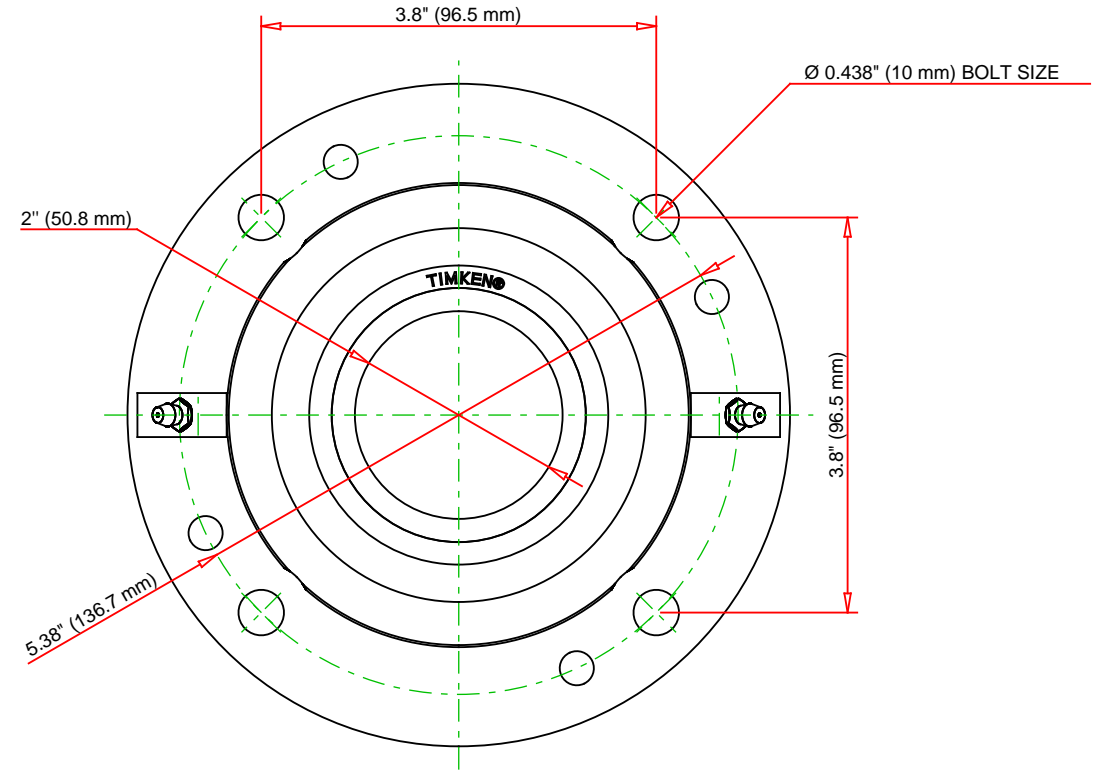
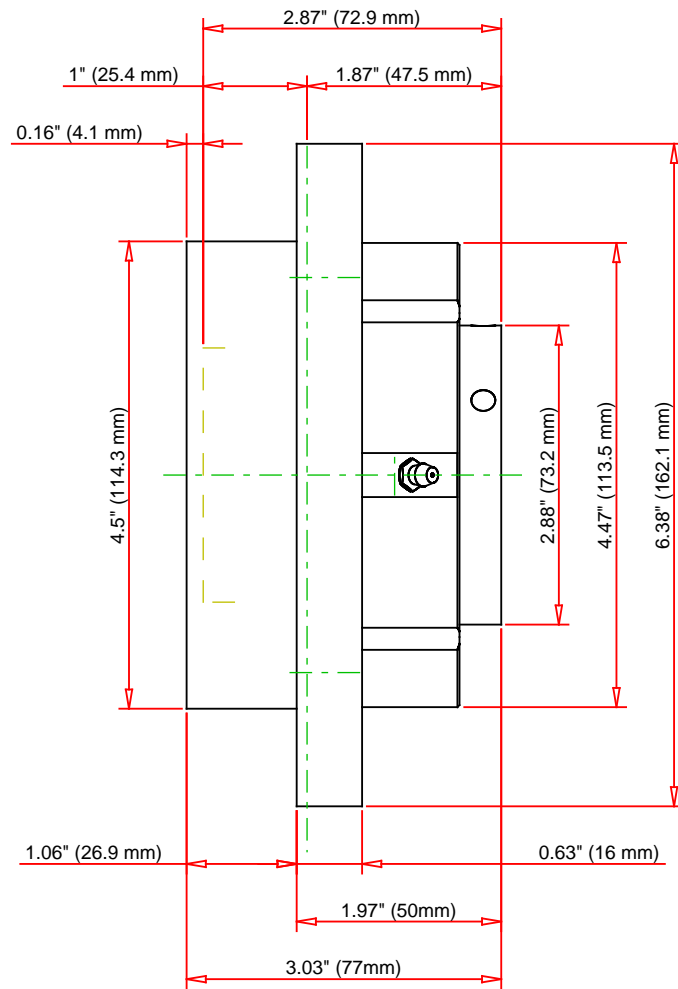
Engineering Internal Radial Clearance

Eng Internal Radial Clearance - Min	0.0016
--	--------

Eng Internal Radial Clearance - Max	0.0026
--	--------

Pre Install Clearance Min	0.0016 in 0.040 mm
----------------------------------	-----------------------

Pre Install Clearance Max	0.0026 in 0.065 mm
----------------------------------	-----------------------



Note: Section View not to Scale

C - Dynamic Load	26300	lbf	117000	N
C0 - Static Load	26600	lbf	118000	N
Weight	10	lb	4.5	kg
Max. Speed T-Seals & Grease	3550	rpm		
Rad. Clearance - Max.	0.0026			

TIMKEN

THE TIMKEN COMPANY
NORTH CANTON, OHIO USA

QAC10A200S

Single Concentric Piloted Flange
Cartridge

Every reasonable effort has been made to ensure the accuracy of the information contained in this writing, but no liability is accepted for errors, omissions or for any other reason.

FOR DISCUSSION ONLY