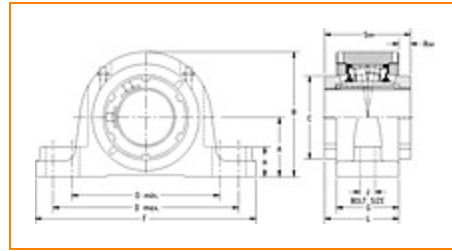



The Timken Company

4500 Mt Pleasant St. NW

N. Canton, OH 44720

Phone: (234) 262-3000

E-Mail: CustomerCAD@timken.com • **Web site:** www.timken.com
Part Number QVVPL14V060S, Double V-Lock Two-Bolt Pillow Block


[Specifications](#) | [Dimensions](#) | [Radial and Thrust Factors](#) | [Engineering Seal Speed](#) | [Engineering Bearing Attributes](#) | [Engineering Internal Radial Clearance](#)

Specifications

Engineering Group Mounted Bearing

Bearing Number 22214

Shaft Size 60 mm

Shaft Size Type Metric

Full Timken Part Number

- QVVPL14V060SB
- QVVPL14V060SC
- QVVPL14V060SEB
- QVVPL14V060SEC
- QVVPL14V060SEM
- QVVPL14V060SEN
- QVVPL14V060SEO
- QVVPL14V060SET
- QVVPL14V060SM
- QVVPL14V060SN
- QVVPL14V060SO
- QVVPL14V060ST



Locking Style	Double V-Lock
Housing Construction	Two-Bolt Pillow Block
UPC Code	0883450172233 0883450172424 0883450172615 0883450172998 0883450173186 0883450173377 0883450203005 0883450203388 0883450215428 0883450215800 0883450227841 0883450228220

Dimensions

Dimension A	2.75 in 69.9 mm
Dimension B	5.8 in 147.3 mm
Dimension C	3.7 in 94 mm
Dimension D Min	6.81 in 173 mm
Dimension D Max	7.44 in 189 mm
Dimension F	9 1/4 in 235 mm
Dimension G	2.9 in 73.7 mm
Dimension H	1.38 in 35.1 mm

Dimension J (Bolt Size)	0.625 in 16 mm
Dimension L	3.5 in 88.9 mm
Dimension RVV	0.6 in 15.2 mm
Dimension SVV	4.09 in 103.9 mm

Radial and Thrust Factors

C0 - Static Load	52000 lbf 231000 N
C - Dynamic Load (Basic)	47800 lbf 213000 N
e - Geometry Factor	0.23
Y1 - Geometry Factor	2.90
Y2 - Geometry Factor	4.32

Engineering Seal Speed

Oil Lubrication - M/N Seal	1700 rpm
Oil Lubrication - T Seal	3050 rpm
Oil Lubrication - B/C/O Seal	1400 rpm
Grease Lubrication - M/N Seal	1700 rpm
Grease Lubrication - T Seal	2600 rpm
Grease Lubrication - B/C/O Seal	1400 rpm

Engineering Bearing Attributes

Float	0.083 in 2.108 mm
--------------	----------------------

Shaft Tolerance	0.0015 in 0.038 mm
------------------------	-----------------------

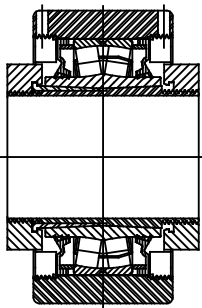
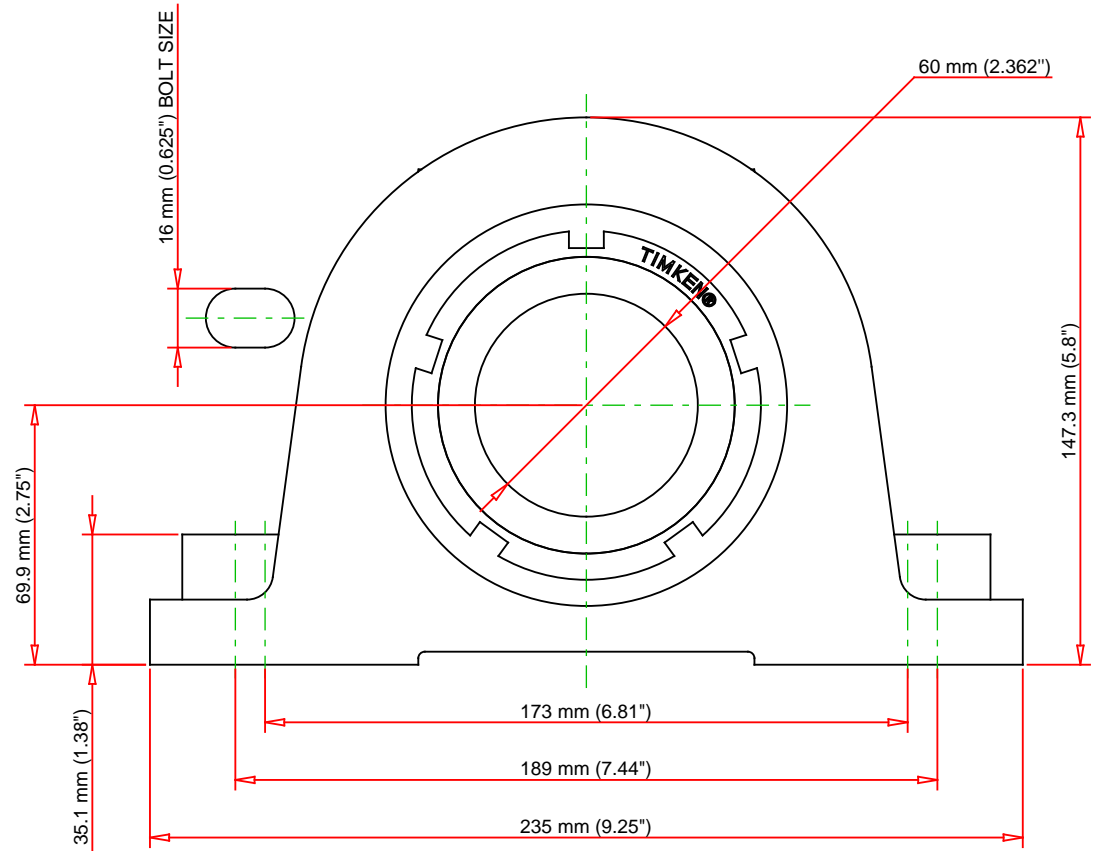
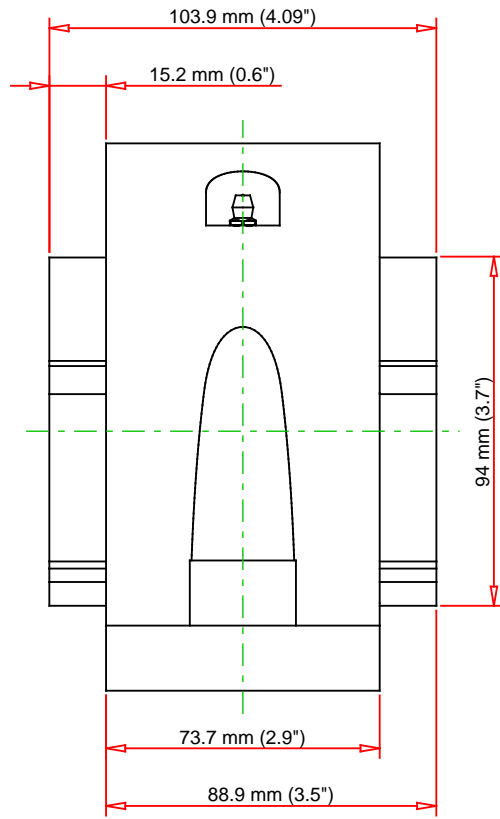
Engineering Internal Radial Clearance

Eng Internal Radial Clearance - Min	0.0030
--------------------------------------------	--------

Eng Internal Radial Clearance - Max	0.0037
--------------------------------------------	--------

Pre Install Clearance Min	0.0030 in 0.075 mm
----------------------------------	-----------------------

Pre Install Clearance Max	0.0037 in 0.094 mm
----------------------------------	-----------------------



Note: Section View not to Scale

C - Dynamic Load	47800	lbf	213000	N
C0 - Static Load	52000	lbf	231000	N
Weight	22	lb	10	kg
Max. Speed T-Seals & Grease	2600	rpm		
Rad. Clearance - Max.	0.0037			

TIMKEN

THE TIMKEN COMPANY
NORTH CANTON, OHIO USA

QVVPL14V060S

Double V-Lock Two-Bolt Pillow Block

Every reasonable effort has been made to ensure the accuracy of the information contained in this writing, but no liability is accepted for errors, omissions or for any other reason.

FOR DISCUSSION ONLY