



**The Timken Company**

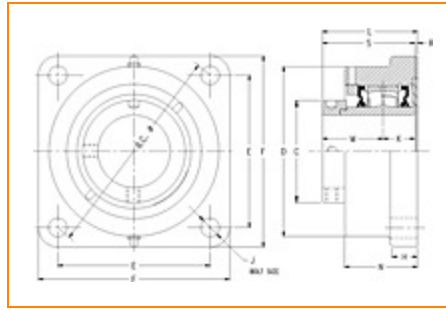
4500 Mt Pleasant St. NW

N. Canton, OH 44720

**Phone:** (234) 262-3000

**E-Mail:** [CustomerCAD@timken.com](mailto:CustomerCAD@timken.com) • **Web site:** [www.timken.com](http://www.timken.com)

## Part Number QMF08J107S, Eccentric Four Bolt Square Flange Block



[Specifications](#) | [Dimensions](#) | [Radial and Thrust Factors](#) | [Engineering Seal Speed](#) | [Engineering Bearing Attributes](#) | [Engineering Internal Radial Clearance](#)

### Specifications

**Engineering Group** Mounted Bearing

**Bearing Number** 22208

**Shaft Size** 1 7/16 in

**Shaft Size Type** Imperial

**Full Timken Part Number**

- QMF08J107SB
- QMF08J107SC
- QMF08J107SEB
- QMF08J107SEC
- QMF08J107SEM
- QMF08J107SEN
- QMF08J107SEO
- QMF08J107SET
- QMF08J107SM
- QMF08J107SMNG
- QMF08J107SN



QMF08J107SO  
QMF08J107ST

**Locking Style**

Eccentric

**Housing Construction**

Four-Bolt Square Flange

**UPC Code**

0883450065627  
0883450065634  
0883450065658  
0883450065665  
0883450065672  
0883450065689  
0883450065696  
0883450065702  
0883450161510  
0883450162197  
0883450254236  
0883450254717  
0883450432542

**Dimensions****Dimension BC**

4.95 in  
125.7 mm

**Dimension C**

2.38 in  
60.5 mm

**Dimension D**

3.69 in  
93.7 mm

**Dimension E**

3.5 in  
88.9 mm

**Dimension F**

4.63 in  
117.6 mm

**Dimension H**

0.88 in  
22.4 mm

**Dimension J (Bolt Size)**

0.5 in  
12 mm

<b>Dimension K</b>	1 in 25.4 mm
<b>Dimension L Exp</b>	2.95 in 74.9 mm
<b>Dimension L Fix</b>	2.87 in 72.9 mm
<b>Dimension M</b>	1.75 in 44.5 mm
<b>Dimension N</b>	2.25 in 57.2 mm
<b>Dimension R</b>	0.12 in 3 mm
<b>Dimension S</b>	2.75 in 69.9 mm

### Radial and Thrust Factors

<b>C0 - Static Load</b>	22400 lbf 99700 N
<b>C - Dynamic Load (Basic)</b>	23400 lbf 104000 N
<b>e - Geometry Factor</b>	0.29
<b>Y1 - Geometry Factor</b>	2.35
<b>Y2 - Geometry Factor</b>	3.5

### Engineering Seal Speed

<b>Oil Lubrication - M/N Seal</b>	2700 rpm
<b>Oil Lubrication - T Seal</b>	4500 rpm
<b>Oil Lubrication - B/C/O Seal</b>	1950 rpm

<b>Grease Lubrication - M/N Seal</b>	2700 rpm
--------------------------------------	----------

<b>Grease Lubrication - T Seal</b>	4000 rpm
------------------------------------	----------

<b>Grease Lubrication - B/C/O Seal</b>	1950 rpm
--	----------

### Engineering Bearing Attributes

<b>Float</b>	0.050 in 1.270 mm
--------------	----------------------

<b>Shaft Tolerance</b>	0.0010 in 0.025 mm
------------------------	-----------------------

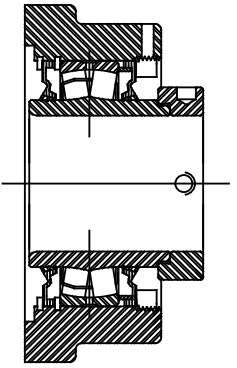
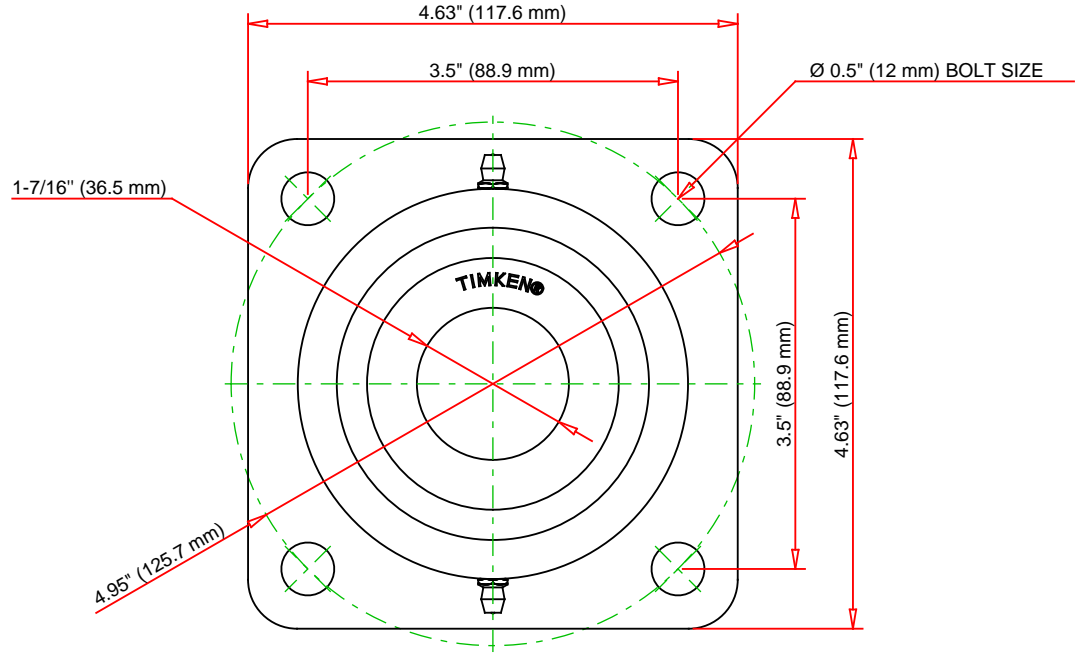
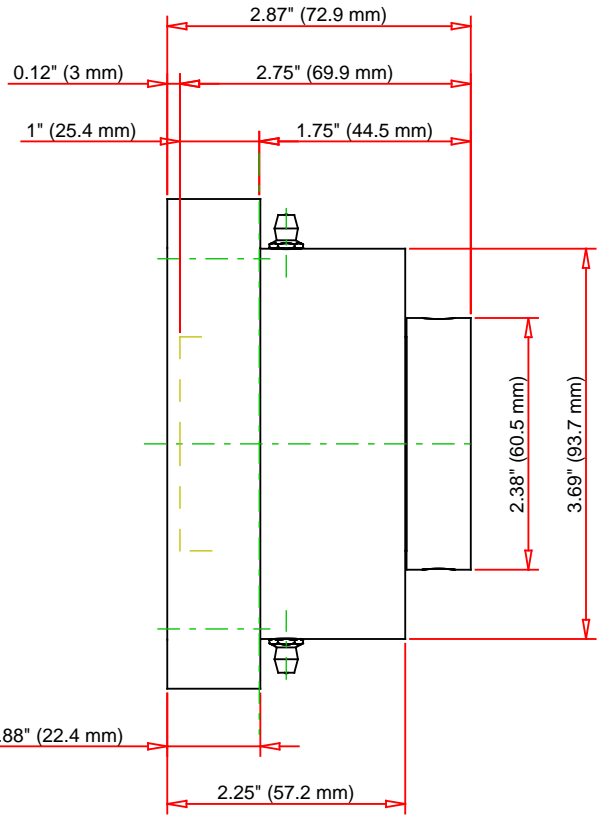
### Engineering Internal Radial Clearance

<b>Eng Internal Radial Clearance - Min</b>	0.0012
--	--------

<b>Eng Internal Radial Clearance - Max</b>	0.0018
--	--------

<b>Pre Install Clearance Min</b>	0.0012 in 0.030 mm
----------------------------------	-----------------------

<b>Pre Install Clearance Max</b>	0.0018 in 0.045 mm
----------------------------------	-----------------------



Note: Section View not to Scale

C - Dynamic Load	23400	lbf	104000	N
C0 - Static Load	22400	lbf	99700	N
Weight	10	lb	4.5	kg
Max. Speed T-Seals & Grease	4000	rpm		
Rad. Clearance - Max.	0.0018			

**TIMKEN**

THE TIMKEN COMPANY  
NORTH CANTON, OHIO USA

**QMF08J107S**  
Eccentric Four Bolt Square Flange  
Block

Every reasonable effort has been made to ensure the accuracy of the information contained in this writing, but no liability is accepted for errors, omissions or for any other reason.

**FOR DISCUSSION ONLY**