



The Timken Company

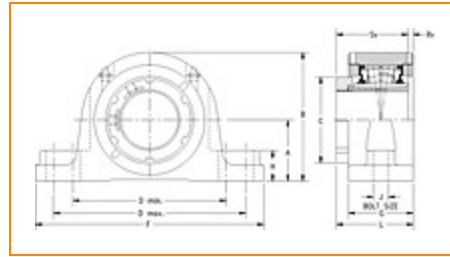
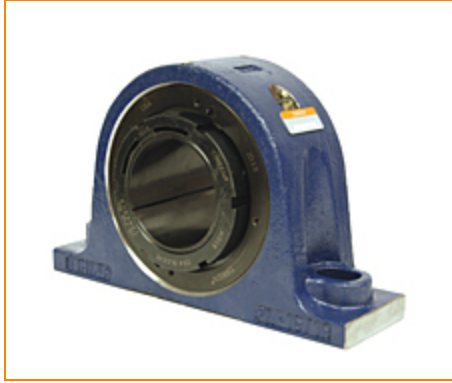
4500 Mt Pleasant St. NW

N. Canton, OH 44720

Phone: (234) 262-3000

E-Mail: CustomerCAD@timken.com • **Web site:** www.timken.com

Part Number QVP14V207S, Single V-Lock Two-Bolt Pillow Block



[Specifications](#) | [Dimensions](#) | [Radial and Thrust Factors](#) | [Engineering Seal Speed](#) | [Engineering Bearing Attributes](#) | [Engineering Internal Radial Clearance](#)

Specifications

Engineering Group Mounted Bearing

Bearing Number 22214

Shaft Size 2 7/16 in

Shaft Size Type Imperial

Full Timken Part Number

- QVP14V207SB
- QVP14V207SC
- QVP14V207SEB
- QVP14V207SEC
- QVP14V207SEM
- QVP14V207SEN
- QVP14V207SEO
- QVP14V207SET
- QVP14V207SM
- QVP14V207SN
- QVP14V207SO
- QVP14V207ST
- QVP14V207STHT



Locking Style	Single V-Lock
Housing Construction	Two-Bolt Pillow Block
UPC Code	0883450110594 0883450110617 0883450110624 0883450110631 0883450170543 0883450171298 0883450202060 0883450202442 0883450214483 0883450214865 0883450226905 0883450227285 0883450960175

Dimensions

Dimension A	2.75 in 69.9 mm
Dimension B	5.8 in 147.3 mm
Dimension C	3.7 in 94 mm
Dimension D Min	6.88 in 174.8 mm
Dimension D Max	8.63 in 219.2 mm
Dimension F	10 1/4 in 260.4 mm
Dimension G	2.9 in 73.7 mm
Dimension H	1.38 in 35.1 mm

Dimension J (Bolt Size)	0.625 in 16 mm
Dimension L	3.5 in 88.9 mm
Dimension RV	0.21 in 5.3 mm
Dimension SV	3.19 in 81 mm

Radial and Thrust Factors

C0 - Static Load	52000 lbf 231000 N
C - Dynamic Load (Basic)	47800 lbf 213000 N
e - Geometry Factor	0.23
Y1 - Geometry Factor	2.90
Y2 - Geometry Factor	4.32

Engineering Seal Speed

Oil Lubrication - M/N Seal	1700 rpm
Oil Lubrication - T Seal	3050 rpm
Oil Lubrication - B/C/O Seal	1400 rpm
Grease Lubrication - M/N Seal	1700 rpm
Grease Lubrication - T Seal	2600 rpm
Grease Lubrication - B/C/O Seal	1400 rpm

Engineering Bearing Attributes

Float	0.083 in 2.108 mm
--------------	----------------------

Shaft Tolerance	0.0015 in 0.038 mm
------------------------	-----------------------

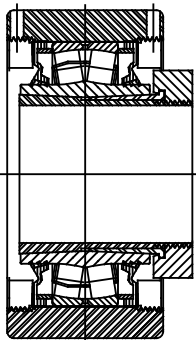
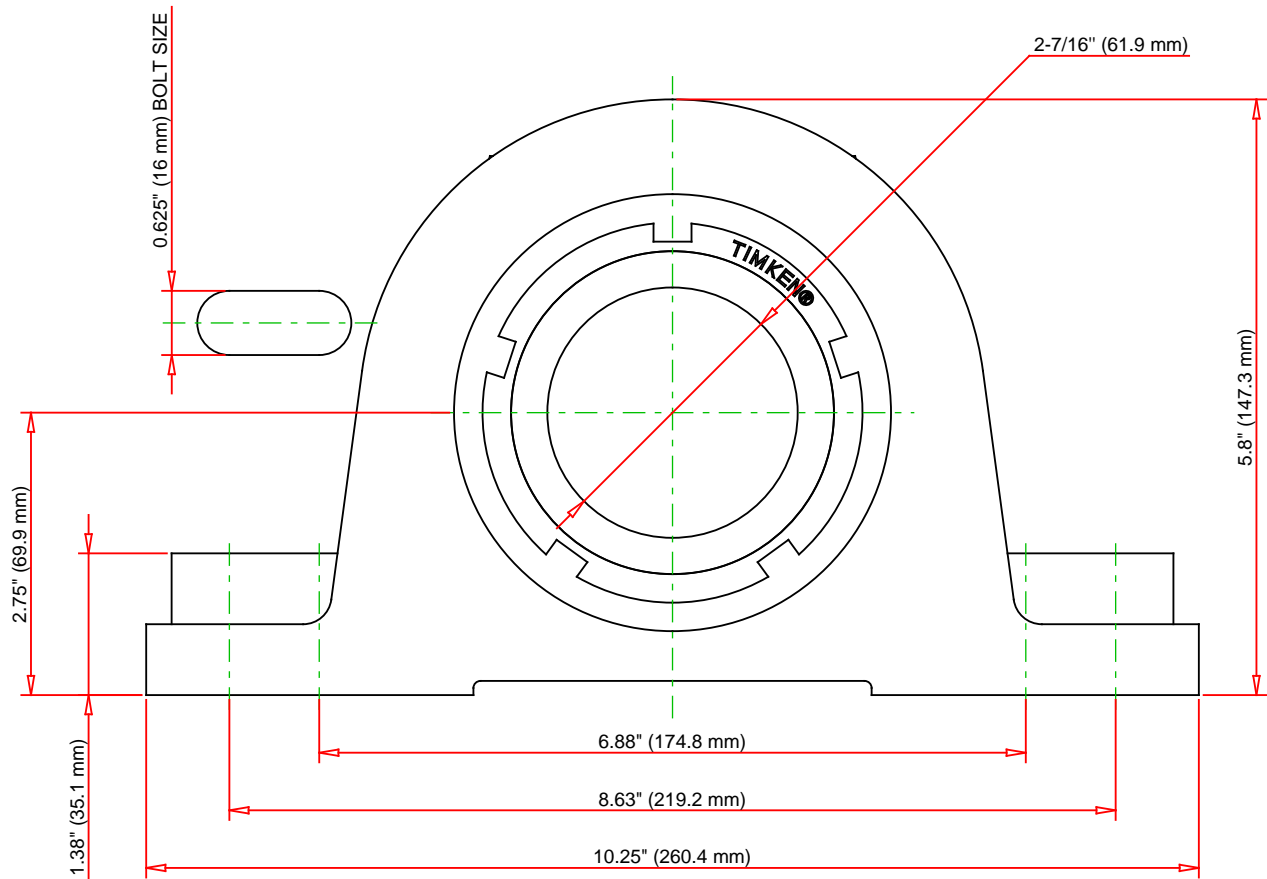
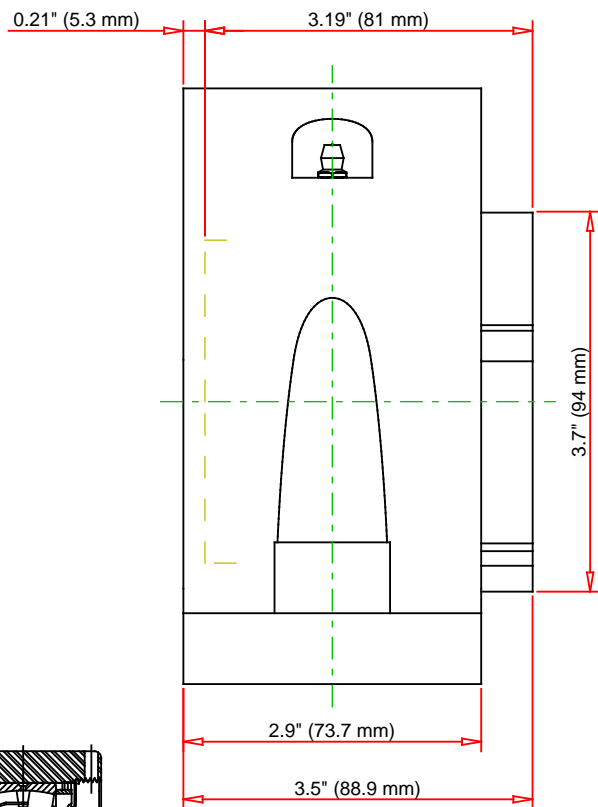
Engineering Internal Radial Clearance

Eng Internal Radial Clearance - Min	0.0030
--	--------

Eng Internal Radial Clearance - Max	0.0037
--	--------

Pre Install Clearance Min	0.0030 in 0.075 mm
----------------------------------	-----------------------

Pre Install Clearance Max	0.0037 in 0.094 mm
----------------------------------	-----------------------



Note: Section View not to Scale

C - Dynamic Load	47800	lbf	213000	N
C0 - Static Load	52000	lbf	231000	N
Weight	22	lb	10	kg
Max. Speed T-Seals & Grease	2600	rpm		
Rad. Clearance - Max.	0.0037			

TIMKEN

THE TIMKEN COMPANY
NORTH CANTON, OHIO USA

QVP14V207S
Single V-Lock Two-Bolt Pillow Block

Every reasonable effort has been made to ensure the accuracy of the information contained in this writing, but no liability is accepted for errors, omissions or for any other reason.

FOR DISCUSSION ONLY