



**The Timken Company**

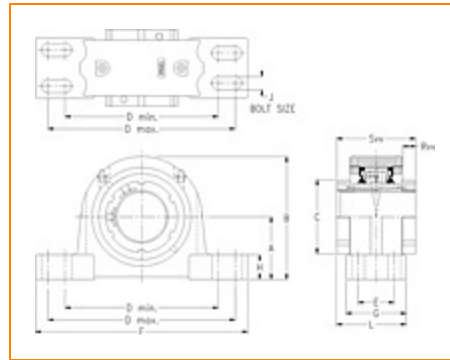
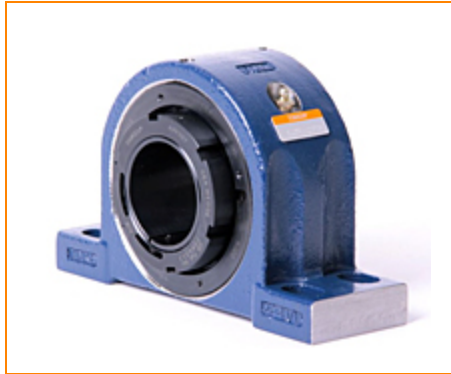
4500 Mt Pleasant St. NW

N. Canton, OH 44720

**Phone:** (234) 262-3000

**E-Mail:** [CustomerCAD@timken.com](mailto:CustomerCAD@timken.com) • **Web site:** [www.timken.com](http://www.timken.com)

## Part Number QVVPH17V211S, Double V-Lock Four-Bolt Pillow Block



[Specifications](#) | [Dimensions](#) | [Radial and Thrust Factors](#) | [Engineering Seal Speed](#) | [Engineering Bearing Attributes](#) | [Engineering Internal Radial Clearance](#)

### Specifications

**Engineering Group** Mounted Bearing

**Bearing Number** 22217

**Shaft Size** 2 11/16 in

**Shaft Size Type** Imperial

**Full Timken Part Number**

- QVVPH17V211SB
- QVVPH17V211SC
- QVVPH17V211SEB
- QVVPH17V211SEC
- QVVPH17V211SEM
- QVVPH17V211SEN
- QVVPH17V211SEO
- QVVPH17V211SET
- QVVPH17V211SETHT
- QVVPH17V211SM
- QVVPH17V211SN
- QVVPH17V211SO
- QVVPH17V211ST



QVVPH17V211STHT

**Locking Style** Double V-Lock

**Housing Construction** Four-Bolt Pillow Block

**UPC Code**

0883450148672  
 0883450148887  
 0883450153362  
 0883450153515  
 0883450176354  
 0883450176552  
 0883450185561  
 0883450185714  
 0883450279116  
 0883450279260  
 0883450283311  
 0883450283465  
 0883450510790  
 0883450510806

**Dimensions****Dimension A**

3-3/4 in  
 95.3 mm

**Dimension B**

7.2 in  
 182.9 mm

**Dimension C**

4.19 in  
 106.4 mm

**Dimension D Min**

9.44 in  
 239.8 mm

**Dimension D Max**

11.31 in  
 287.3 mm

**Dimension E**

2.13 in  
 54.1 mm

**Dimension F**

12.63 in  
 320.8 mm

<b>Dimension G</b>	3.63 in 92.2 mm
<b>Dimension H</b>	1.26 in 32 mm
<b>Dimension J (Bolt Size)</b>	0.625 in 16 mm
<b>Dimension L</b>	3.91 in 99.3 mm
<b>Dimension RVV</b>	0.59 in 15 mm
<b>Dimension SVV</b>	4.18 in 106.2 mm

### Radial and Thrust Factors

<b>C0 - Static Load</b>	71900 lbf 320000 N
<b>C - Dynamic Load (Basic)</b>	66900 lbf 297000 N
<b>e - Geometry Factor</b>	0.22
<b>Y1 - Geometry Factor</b>	3.07
<b>Y2 - Geometry Factor</b>	4.57

### Engineering Seal Speed

<b>Oil Lubrication - M/N Seal</b>	1400 rpm
<b>Oil Lubrication - T Seal</b>	2400 rpm
<b>Oil Lubrication - B/C/O Seal</b>	1100 rpm
<b>Grease Lubrication - M/N Seal</b>	1400 rpm

<b>Grease Lubrication - T Seal</b>	2000 rpm
------------------------------------	----------

<b>Grease Lubrication - B/C/O Seal</b>	1100 rpm
--	----------

### Engineering Bearing Attributes

<b>Float</b>	0.083 in 2.108 mm
--------------	----------------------

<b>Shaft Tolerance</b>	0.0020 in 0.051 mm
------------------------	-----------------------

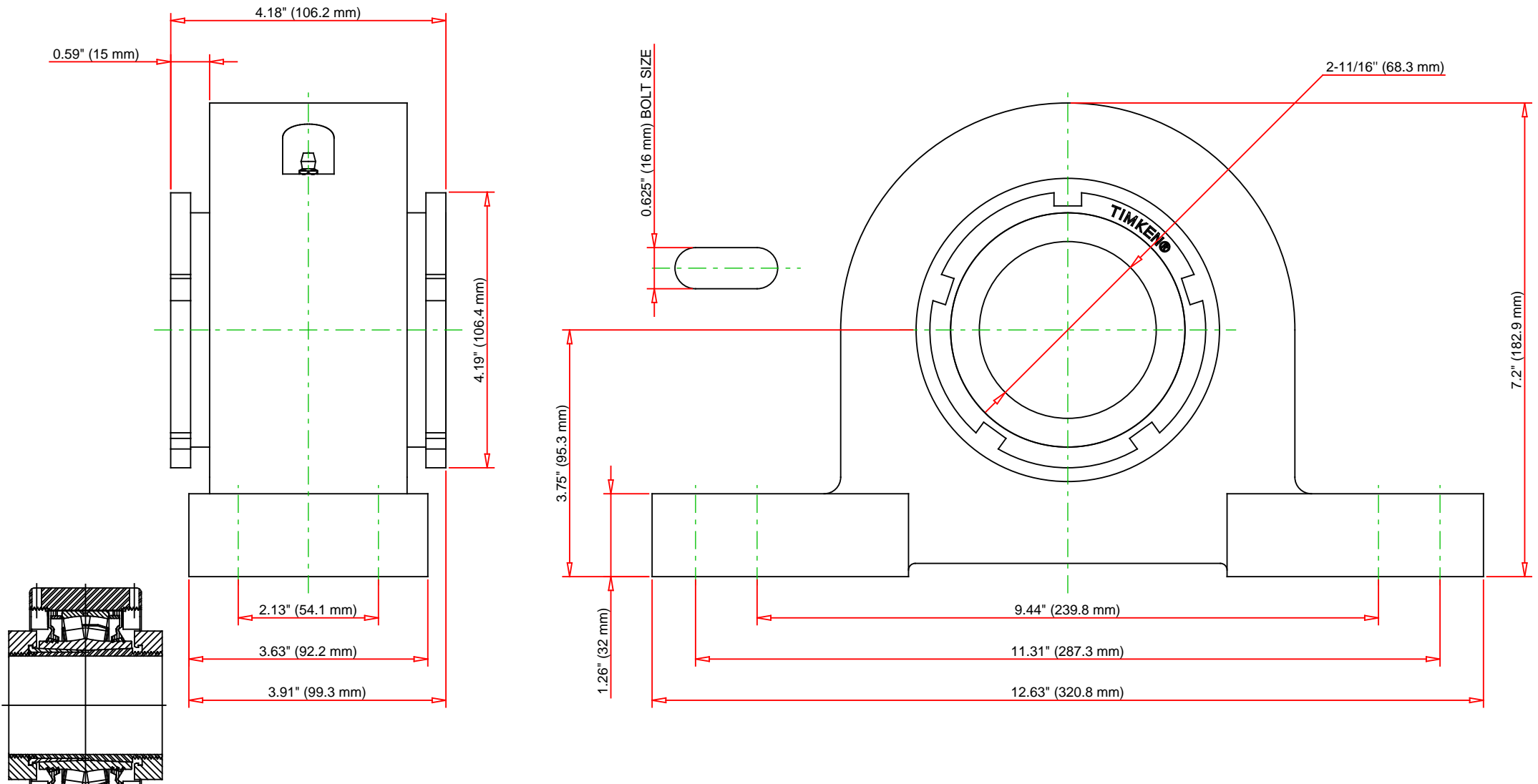
### Engineering Internal Radial Clearance

<b>Eng Internal Radial Clearance - Min</b>	0.0037
--	--------

<b>Eng Internal Radial Clearance - Max</b>	0.0047
--	--------

<b>Pre Install Clearance Min</b>	0.0037 in 0.095 mm
----------------------------------	-----------------------

<b>Pre Install Clearance Max</b>	0.0047 in 0.120 mm
----------------------------------	-----------------------



Note: Section View not to Scale

C - Dynamic Load	66900	lbf	297000	N
C0 - Static Load	71900	lbf	320000	N
Weight	37	lb	16.8	kg
Max. Speed T-Seals & Grease	2000	rpm		
Rad. Clearance - Max.	0.0047			

**TIMKEN**  
 THE TIMKEN COMPANY  
 NORTH CANTON, OHIO USA

**QVVPH17V211S**  
 Double V-Lock Four-Bolt Pillow Block

Every reasonable effort has been made to ensure the accuracy of the information contained in this writing, but no liability is accepted for errors, omissions or for any other reason.

**FOR DISCUSSION ONLY**