


The Timken Company

4500 Mt Pleasant St. NW

N. Canton, OH 44720

Phone: (234) 262-3000

E-Mail: CustomerCAD@timken.com • **Web site:** www.timken.com

Part Number QAC09A045S, Single Concentric Piloted Flange Cartridge



[Specifications](#) | [Dimensions](#) | [Radial and Thrust Factors](#) | [Engineering Seal Speed](#) | [Engineering Bearing Attributes](#) | [Engineering Internal Radial Clearance](#)

Specifications

Engineering Group	Mounted Bearing
Bearing Number	22209
Shaft Size	45 mm
Shaft Size Type	Metric
Full Timken Part Number	QAC09A045SB QAC09A045SC QAC09A045SEB QAC09A045SEC QAC09A045SEM QAC09A045SEN QAC09A045SEO QAC09A045SET QAC09A045SM QAC09A045SN QAC09A045SO QAC09A045ST



Locking Style	Single Concentric
----------------------	-------------------

Housing Construction	Piloted Flange Cartridge
-----------------------------	--------------------------

UPC Code	883450965019
	883450965026
	883450965033
	883450965040
	883450965057
	883450965064
	883450965071
	883450965088
	883450965095
	883450965101
883450965118	
883450965125	

Dimensions

Dimension BC	5.13 in 130.3 mm
---------------------	---------------------

Dimension B Exp	2.2 in 55.9 mm
------------------------	-------------------

Dimension B Fix	2.15 in 54.6 mm
------------------------	--------------------

Dimension C	2.63 in 66.8 mm
--------------------	--------------------

Dimension D	4.38 in 111.3 mm
--------------------	---------------------

Dimension E	3.62 in 91.9 mm
--------------------	--------------------

Dimension F	6.13 in 155.7 mm
--------------------	---------------------

Dimension G	4.25 in 108 mm
--------------------	-------------------

Dimension H	0.5 in 12.7 mm
Dimension J (Bolt Size)	0.438 in 10 mm
Dimension KA	1 in 25.4 mm
Dimension L Exp	3.08 in 78.2 mm
Dimension L Fix	3.03 in 77 mm
Dimension M	1.88 in 47.8 mm
Dimension N	0.88 in 22.4 mm
Dimension RA	0.15 in 3.8 mm
Dimension SA	2.88 in 73.2 mm

Radial and Thrust Factors

C0 - Static Load	24200 lbf 108000 N
C - Dynamic Load (Basic)	24500 lbf 109000 N
e - Geometry Factor	0.26
Y1 - Geometry Factor	2.64
Y2 - Geometry Factor	3.93

Engineering Seal Speed

Oil Lubrication - M/N Seal	2700 rpm
-----------------------------------	----------

Oil Lubrication - T Seal	4500 rpm
---------------------------------	----------

Oil Lubrication - B/C/O Seal	1950 rpm
-------------------------------------	----------

Grease Lubrication - M/N Seal	2700 rpm
--------------------------------------	----------

Grease Lubrication - T Seal	4000 rpm
------------------------------------	----------

Grease Lubrication - B/C/O Seal	1950 rpm
--	----------

Engineering Bearing Attributes

Float	0.050 in 1.270 mm
--------------	----------------------

Shaft Tolerance	0.0015 in 0.038 mm
------------------------	-----------------------

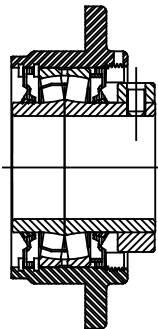
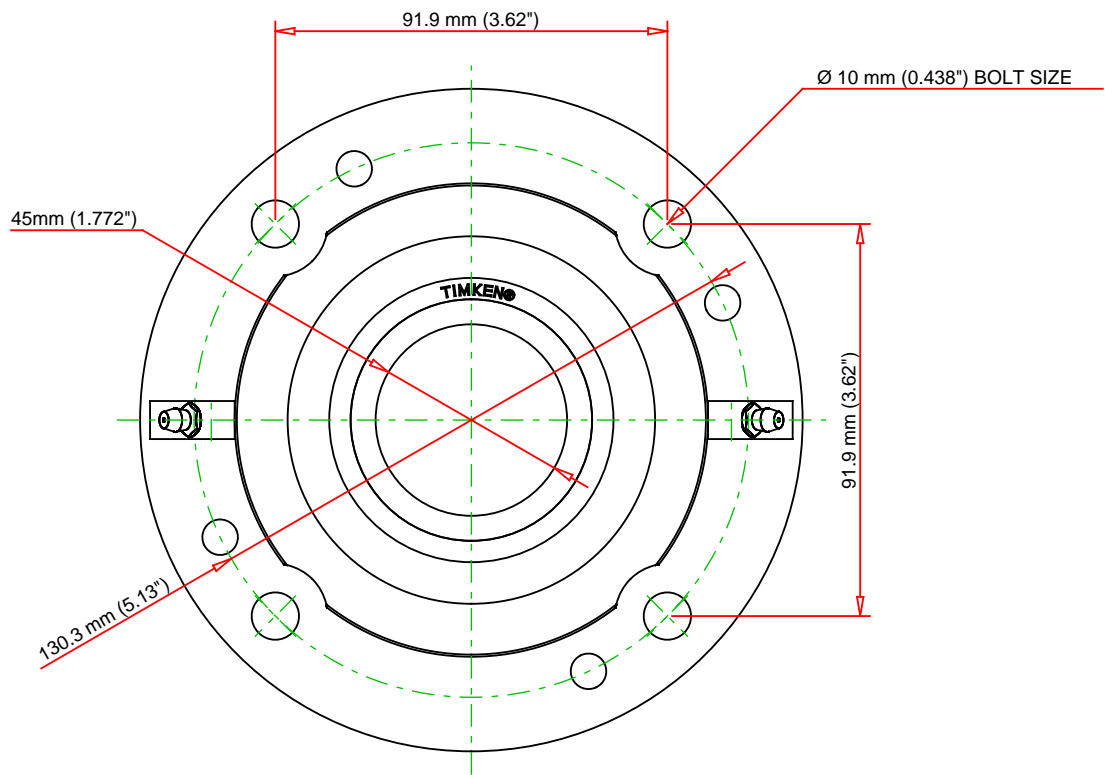
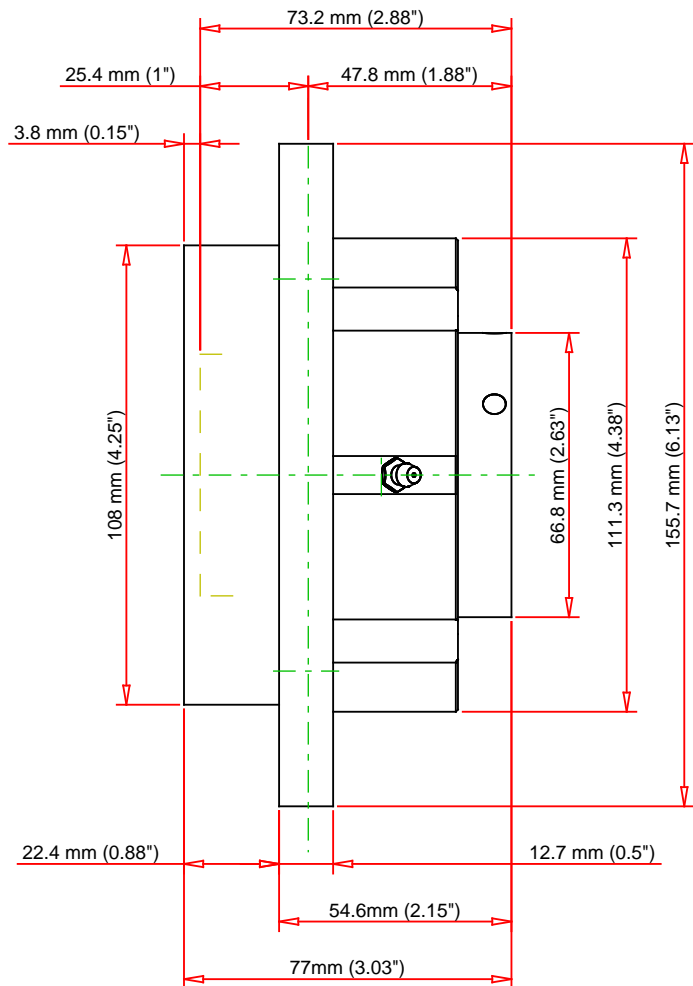
Engineering Internal Radial Clearance

Eng Internal Radial Clearance - Min	0.0014
--	--------

Eng Internal Radial Clearance - Max	0.0022
--	--------

Pre Install Clearance Min	0.0014 in 0.035 mm
----------------------------------	-----------------------

Pre Install Clearance Max	0.0022 in 0.055 mm
----------------------------------	-----------------------



Note: Section View not to Scale

C - Dynamic Load	24500	lbf	109000	N
C0 - Static Load	24200	lbf	108000	N
Weight	9	lb	4.1	kg
Max. Speed T-Seals & Grease	4000	rpm		
Rad. Clearance - Max.	0.0022			

TIMKEN
THE TIMKEN COMPANY
NORTH CANTON, OHIO USA

QAC09A045S
Single Concentric Piloted Flange
Cartridge

Every reasonable effort has been made to ensure the accuracy of the information contained in this writing, but no liability is accepted for errors, omissions or for any other reason.

FOR DISCUSSION ONLY