



The Timken Company

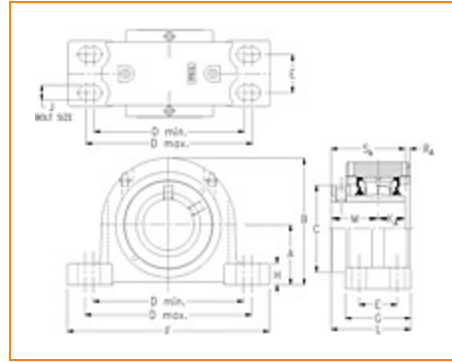
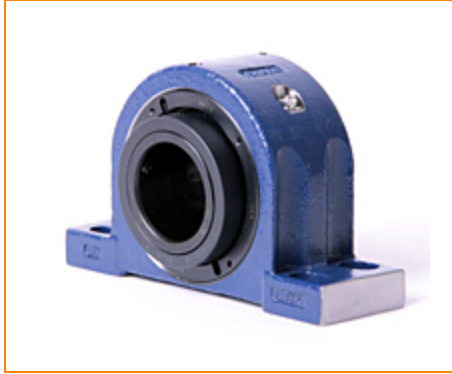
4500 Mt Pleasant St. NW

N. Canton, OH 44720

Phone: (234) 262-3000

E-Mail: CustomerCAD@timken.com • **Web site:** www.timken.com

Part Number QAPF15A300S, Single Concentric Four-Bolt Pillow Block



[Specifications](#) | [Dimensions](#) | [Radial and Thrust Factors](#) | [Engineering Seal Speed](#) | [Engineering Bearing Attributes](#) | [Engineering Internal Radial Clearance](#)

Specifications

Engineering Group Mounted Bearing

Bearing Number 22215

Shaft Size 3 in

Shaft Size Type Imperial

Full Timken Part Number

- QAPF15A300SB
- QAPF15A300SC
- QAPF15A300SEB
- QAPF15A300SEC
- QAPF15A300SEM
- QAPF15A300SEN
- QAPF15A300SEO
- QAPF15A300SET
- QAPF15A300SM
- QAPF15A300SN
- QAPF15A300SO
- QAPF15A300ST



Locking Style	Single Concentric
Housing Construction	Four-Bolt Pillow Block
UPC Code	0883450046305 0883450046312 0883450046336 0883450046343 0883450046350 0883450046367 0883450046374 0883450046381 0883450189309 0883450189415 0883450266642 0883450266758

Dimensions

Dimension A	3.25 in 82.6 mm
Dimension B	6.6 in 167.6 mm
Dimension C	4.29 in 109 mm
Dimension D Min	7.6 in 193 mm
Dimension D Max	9.1 in 231.1 mm
Dimension E	1.88 in 47.8 mm
Dimension F	10.44 in 265.2 mm
Dimension G	3.13 in 79.5 mm

Dimension H	1.29 in 32.8 mm
--------------------	--------------------

Dimension J (Bolt Size)	0.625 in 16 mm
--------------------------------	-------------------

Dimension KA	1.25 in 31.8 mm
---------------------	--------------------

Dimension L	3.94 in 100.1 mm
--------------------	---------------------

Dimension M	2.37 in 60.2 mm
--------------------	--------------------

Dimension RA	0.24 in 6.1 mm
---------------------	-------------------

Dimension SA	3.62 in 91.9 mm
---------------------	--------------------

Radial and Thrust Factors

C0 - Static Load	54100 lbf 240000 N
-------------------------	-----------------------

C - Dynamic Load (Basic)	49900 lbf 222000 N
---------------------------------	-----------------------

e - Geometry Factor	0.22
----------------------------	------

Y1 - Geometry Factor	3.14
-----------------------------	------

Y2 - Geometry Factor	4.67
-----------------------------	------

Engineering Seal Speed

Oil Lubrication - M/N Seal	1600 rpm
-----------------------------------	----------

Oil Lubrication - T Seal	2900 rpm
---------------------------------	----------

Oil Lubrication - B/C/O Seal	1300 rpm
-------------------------------------	----------

Grease Lubrication - M/N Seal	1600 rpm
--------------------------------------	----------

Grease Lubrication - T Seal	2400 rpm
------------------------------------	----------

Grease Lubrication - B/C/O Seal	1300 rpm
--	----------

Engineering Bearing Attributes

Float	0.083 in
	2.108 mm

Shaft Tolerance	0.0020 in
	0.051 mm

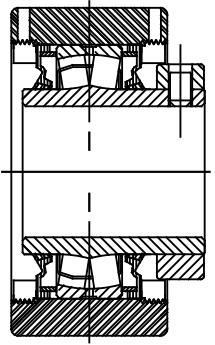
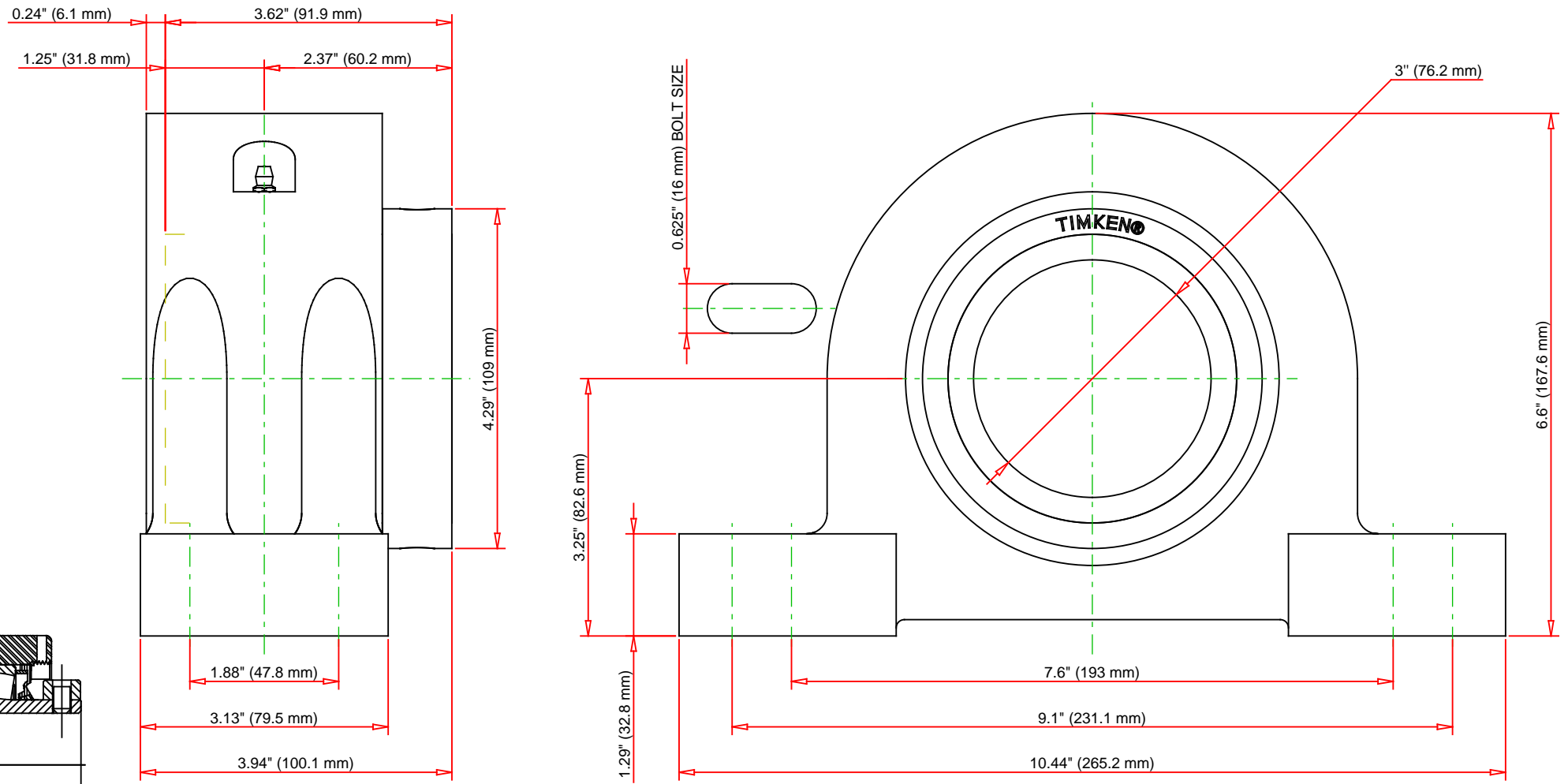
Engineering Internal Radial Clearance

Eng Internal Radial Clearance - Min	0.0020
--	--------

Eng Internal Radial Clearance - Max	0.0031
--	--------

Pre Install Clearance Min	0.0020 in
	0.050 mm

Pre Install Clearance Max	0.0031 in
	0.080 mm



Note: Section View not to Scale

C - Dynamic Load	49900	lbf	222000	N
C0 - Static Load	54100	lbf	240000	N
Weight	27	lb	12.2	kg
Max. Speed T-Seals & Grease	2400	rpm		
Rad. Clearance - Max.	0.0031			

TIMKEN

THE TIMKEN COMPANY
NORTH CANTON, OHIO USA

QAPF15A300S
Single Concentric Four-Bolt Pillow Block

Every reasonable effort has been made to ensure the accuracy of the information contained in this writing, but no liability is accepted for errors, omissions or for any other reason.

FOR DISCUSSION ONLY