



**The Timken Company**

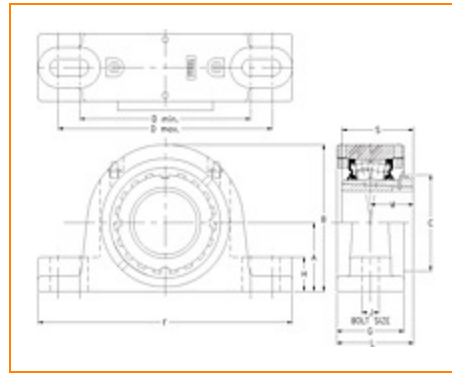
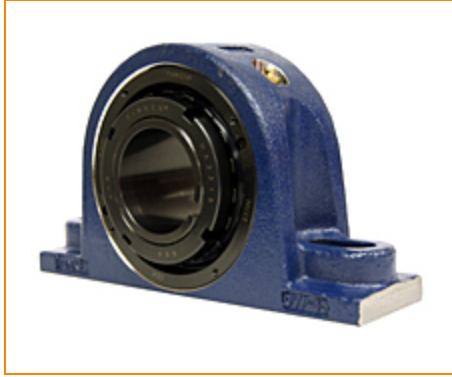
4500 Mt Pleasant St. NW

N. Canton, OH 44720

**Phone:** (234) 262-3000

**E-Mail:** [CustomerCAD@timken.com](mailto:CustomerCAD@timken.com) • **Web site:** [www.timken.com](http://www.timken.com)

## Part Number DVP15K208S, Tapered Adapter Two-Bolt Pillow Block



[Specifications](#) | [Dimensions](#) | [Radial and Thrust Factors](#) | [Engineering Seal Speed](#) | [Engineering Bearing Attributes](#) | [Engineering Internal Radial Clearance](#)

### Specifications

**Engineering Group** Mounted Bearing

**Bearing Number** 22215

**Shaft Size** 2 1/2 in

**Shaft Size Type** Imperial

**Full Timken Part Number**

- DVP15K208SB
- DVP15K208SC
- DVP15K208SEB
- DVP15K208SEC
- DVP15K208SEM
- DVP15K208SEN
- DVP15K208SEO
- DVP15K208SET
- DVP15K208SM
- DVP15K208SN
- DVP15K208SO
- DVP15K208ST



<b>Locking Style</b>	Tapered Adapter
<b>Housing Construction</b>	Two-Bolt Pillow Block
<b>UPC Code</b>	0883450008327 0883450008334 0883450008358 0883450008365 0883450008372 0883450008389 0883450008396 0883450008402 0883450195706 0883450195904 0883450273213 0883450273411

## Dimensions

<b>Dimension A</b>	2.75 in 69.9 mm
<b>Dimension B</b>	5.9 in 149.9 mm
<b>Dimension C</b>	3.86 in 98 mm
<b>Dimension D Min</b>	6.88 in 174.8 mm
<b>Dimension D Max</b>	8.63 in 219.2 mm
<b>Dimension F</b>	10 1/4 in 260.4 mm
<b>Dimension G</b>	2.7 in 68.6 mm
<b>Dimension H</b>	1.38 in 35.1 mm

<b>Dimension J (Bolt Size)</b>	0.625 in 16 mm
--------------------------------	-------------------

<b>Dimension L</b>	3.08 in 78.2 mm
--------------------	--------------------

<b>Dimension M</b>	1.73 in 43.9 mm
--------------------	--------------------

<b>Dimension S</b>	2.89 in 73.4 mm
--------------------	--------------------

## Radial and Thrust Factors

<b>C0 - Static Load</b>	54100 lbf 240000 N
-------------------------	-----------------------

<b>C - Dynamic Load (Basic)</b>	49900 lbf 222000 N
---------------------------------	-----------------------

<b>e - Geometry Factor</b>	0.22
----------------------------	------

<b>Y1 - Geometry Factor</b>	3.14
-----------------------------	------

<b>Y2 - Geometry Factor</b>	4.67
-----------------------------	------

## Engineering Seal Speed

<b>Oil Lubrication - M/N Seal</b>	1600 rpm
-----------------------------------	----------

<b>Oil Lubrication - T Seal</b>	2900 rpm
---------------------------------	----------

<b>Oil Lubrication - B/C/O Seal</b>	1300 rpm
-------------------------------------	----------

<b>Grease Lubrication - M/N Seal</b>	1600 rpm
--------------------------------------	----------

<b>Grease Lubrication - T Seal</b>	2400 rpm
------------------------------------	----------

<b>Grease Lubrication - B/C/O Seal</b>	1300 rpm
--	----------

## Engineering Bearing Attributes

<b>Float</b>	0.083 in 2.108 mm
--------------	----------------------

<b>Shaft Tolerance</b>	0.0035 in 0.089 mm
------------------------	-----------------------

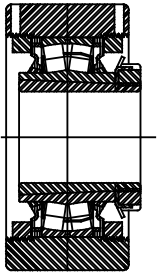
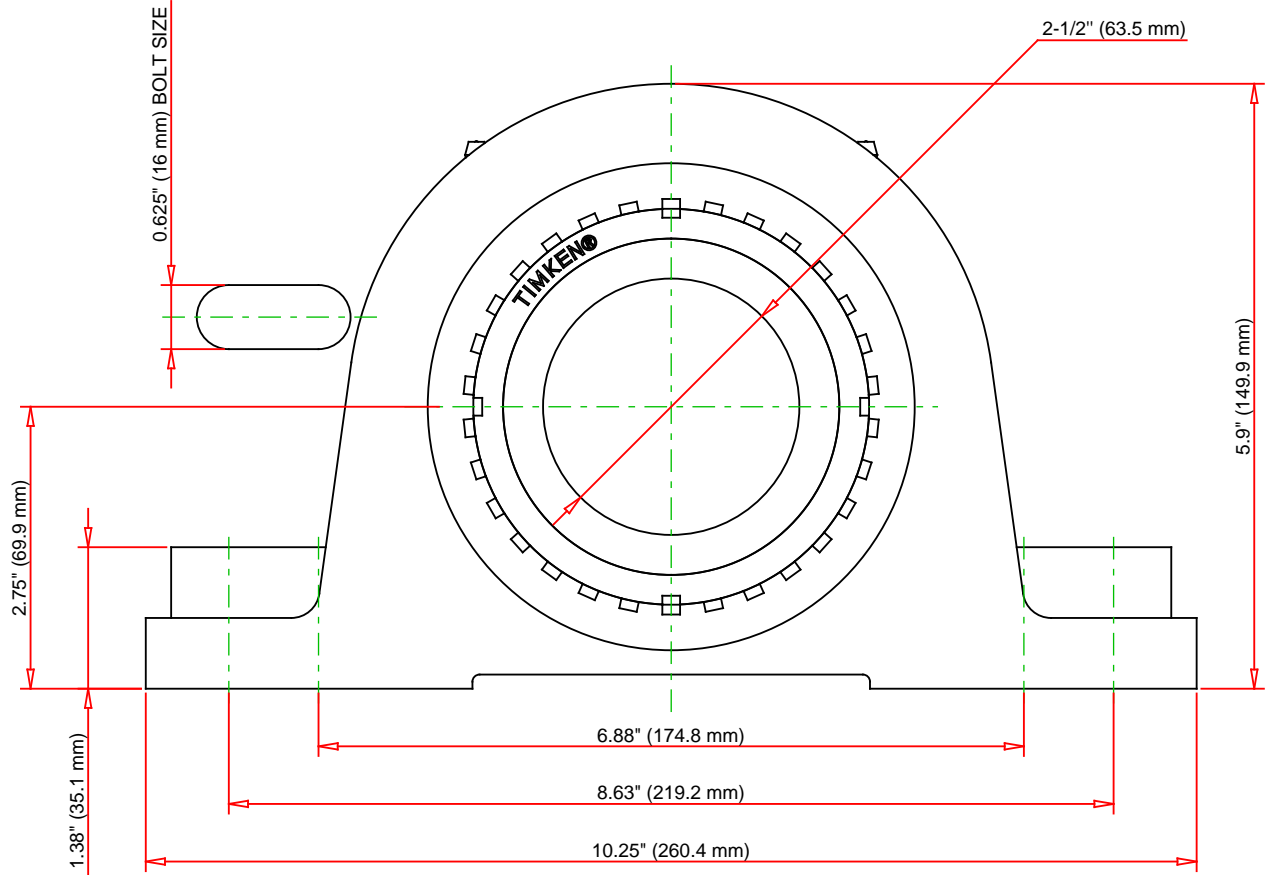
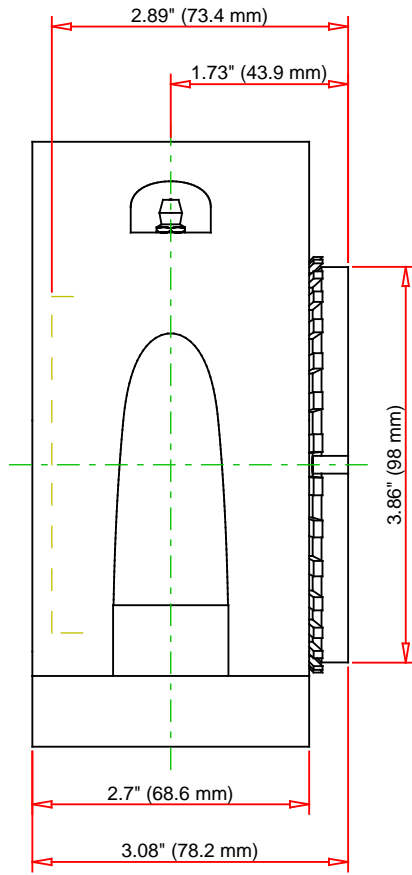
## Engineering Internal Radial Clearance

<b>Eng Internal Radial Clearance - Min</b>	0.0037
--	--------

<b>Eng Internal Radial Clearance - Max</b>	0.0047
--	--------

<b>Pre Install Clearance Min</b>	0.0037 in 0.095 mm
----------------------------------	-----------------------

<b>Pre Install Clearance Max</b>	0.0047 in 0.120 mm
----------------------------------	-----------------------



Note: Section View not to Scale

C - Dynamic Load	49900	lbf	222000	N
C0 - Static Load	54100	lbf	240000	N
Weight	25	lb	11.3	kg
Max. Speed T-Seals & Grease	2400	rpm		
Rad. Clearance - Max.	0.0047			

**TIMKEN**

THE TIMKEN COMPANY  
NORTH CANTON, OHIO USA

**DVP15K208S**

Tapered Adapter Two-Bolt Pillow  
Block

Every reasonable effort has been made to ensure the accuracy of the information contained in this writing, but no liability is accepted for errors, omissions or for any other reason.

**FOR DISCUSSION ONLY**