



The Timken Company

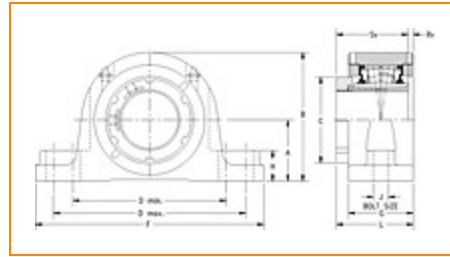
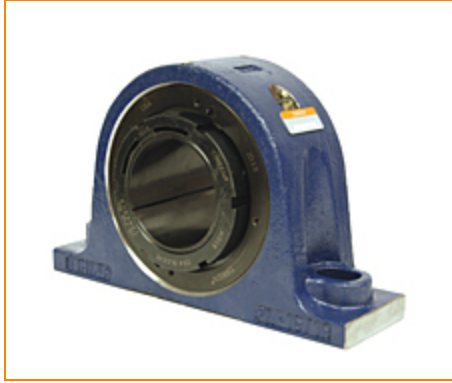
4500 Mt Pleasant St. NW

N. Canton, OH 44720

Phone: (234) 262-3000

E-Mail: CustomerCAD@timken.com • **Web site:** www.timken.com

Part Number QVP16V215S, Single V-Lock Two-Bolt Pillow Block



[Specifications](#) | [Dimensions](#) | [Radial and Thrust Factors](#) | [Engineering Seal Speed](#) | [Engineering Bearing Attributes](#) | [Engineering Internal Radial Clearance](#)

Specifications

Engineering Group Mounted Bearing

Bearing Number 22216

Shaft Size 2 15/16 in

Shaft Size Type Imperial

Full Timken Part Number

- QVP16V215SB
- QVP16V215SC
- QVP16V215SEB
- QVP16V215SEC
- QVP16V215SEM
- QVP16V215SEN
- QVP16V215SEO
- QVP16V215SET
- QVP16V215SM
- QVP16V215SN
- QVP16V215SO
- QVP16V215ST



Locking Style	Single V-Lock
Housing Construction	Two-Bolt Pillow Block
UPC Code	0883450110952 0883450110976 0883450110983 0883450110990 0883450170604 0883450171359 0883450202121 0883450202503 0883450214544 0883450214926 0883450226967 0883450227346

Dimensions

Dimension A	3.13 in 79.5 mm
Dimension B	6.47 in 164.3 mm
Dimension C	4.19 in 106.4 mm
Dimension D Min	7.8 in 198.1 mm
Dimension D Max	9.63 in 244.6 mm
Dimension F	11.63 in 295.4 mm
Dimension G	3 in 76.2 mm
Dimension H	1.38 in 35.1 mm

Dimension J (Bolt Size)	0.75 in 20 mm
Dimension L	3.59 in 91.2 mm
Dimension RV	0.22 in 5.6 mm
Dimension SV	3.29 in 83.6 mm

Radial and Thrust Factors

C0 - Static Load	62500 lbf 278000 N
C - Dynamic Load (Basic)	57200 lbf 254000 N
e - Geometry Factor	0.22
Y1 - Geometry Factor	3.14
Y2 - Geometry Factor	4.67

Engineering Seal Speed

Oil Lubrication - M/N Seal	1500 rpm
Oil Lubrication - T Seal	2650 rpm
Oil Lubrication - B/C/O Seal	1200 rpm
Grease Lubrication - M/N Seal	1500 rpm
Grease Lubrication - T Seal	2200 rpm
Grease Lubrication - B/C/O Seal	1150 rpm

Engineering Bearing Attributes

Float	0.083 in 2.108 mm
--------------	----------------------

Shaft Tolerance	0.0020 in 0.051 mm
------------------------	-----------------------

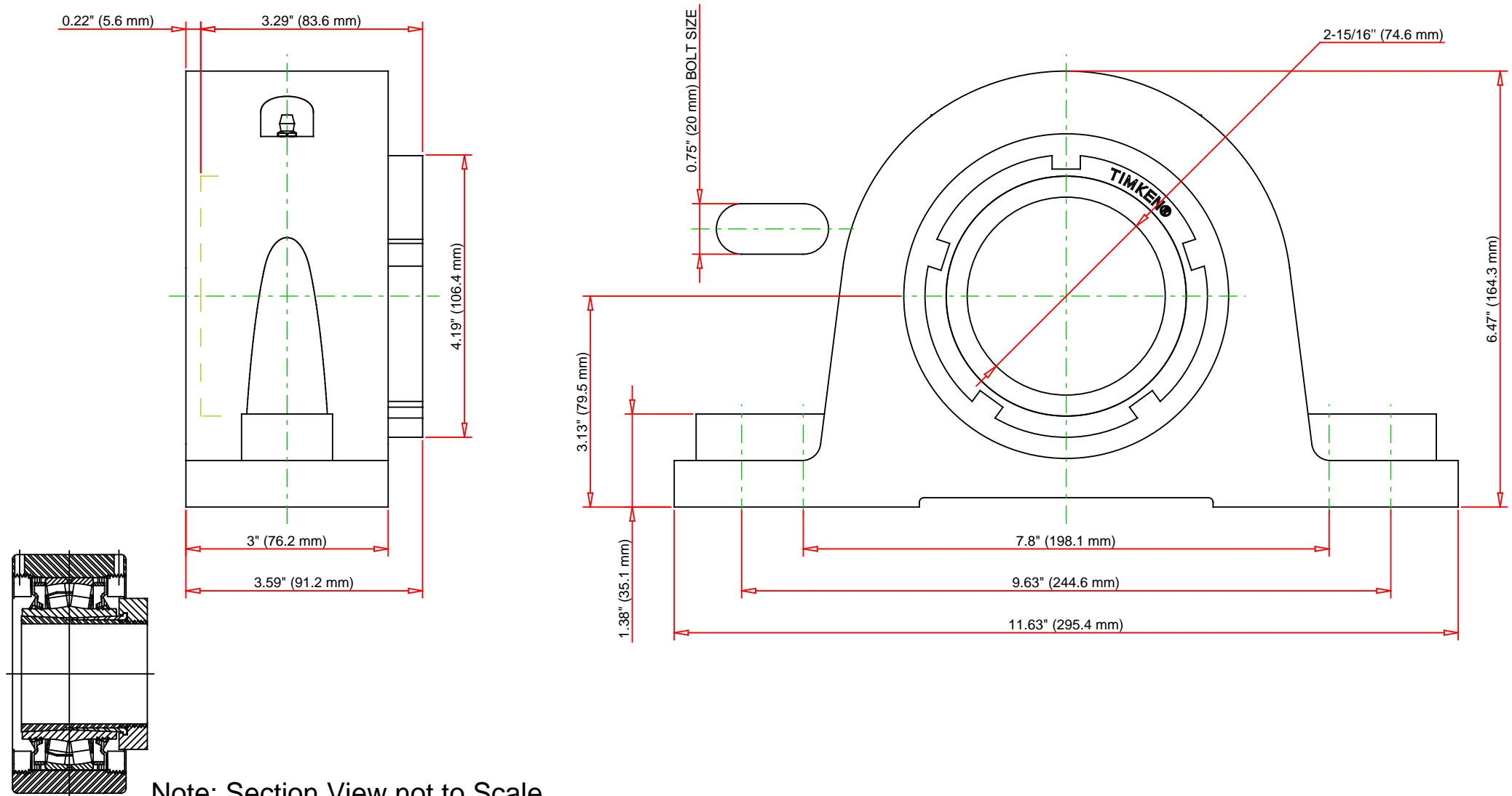
Engineering Internal Radial Clearance

Eng Internal Radial Clearance - Min	0.0037
--	--------

Eng Internal Radial Clearance - Max	0.0047
--	--------

Pre Install Clearance Min	0.0037 in 0.095 mm
----------------------------------	-----------------------

Pre Install Clearance Max	0.0047 in 0.120 mm
----------------------------------	-----------------------



C - Dynamic Load	57200	lbf	254000	N
C0 - Static Load	62500	lbf	278000	N
Weight	28	lb	12.7	kg
Max. Speed T-Seals & Grease	2200	rpm		
Rad. Clearance - Max.	0.0047			

TIMKEN

THE TIMKEN COMPANY
NORTH CANTON, OHIO USA

QVP16V215S
Single V-Lock Two-Bolt Pillow Block

Every reasonable effort has been made to ensure the accuracy of the information contained in this writing, but no liability is accepted for errors, omissions or for any other reason.

FOR DISCUSSION ONLY