



The Timken Company

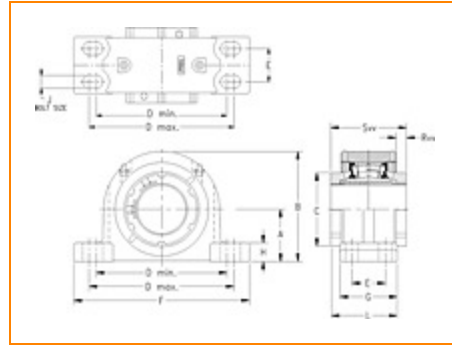
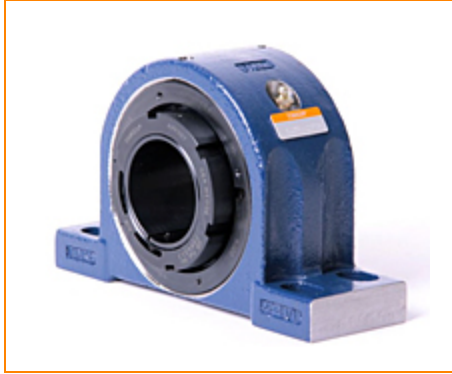
4500 Mt Pleasant St. NW

N. Canton, OH 44720

Phone: (234) 262-3000

E-Mail: CustomerCAD@timken.com • **Web site:** www.timken.com

Part Number QVVPF28V500S, Double V-Lock Four-Bolt Pillow Block



[Specifications](#) | [Dimensions](#) | [Radial and Thrust Factors](#) | [Engineering Seal Speed](#) | [Engineering Bearing Attributes](#) | [Engineering Internal Radial Clearance](#)

Specifications

Engineering Group Mounted Bearing

Bearing Number 22228

Shaft Size 5 in

Shaft Size Type Imperial

Full Timken Part Number

- QVVPF28V500SB
- QVVPF28V500SC
- QVVPF28V500SEB
- QVVPF28V500SEC
- QVVPF28V500SEM
- QVVPF28V500SEN
- QVVPF28V500SEO
- QVVPF28V500SET
- QVVPF28V500SM
- QVVPF28V500SN
- QVVPF28V500SO
- QVVPF28V500ST



Locking Style	Double V-Lock
Housing Construction	Four-Bolt Pillow Block
UPC Code	0883450089043 0883450089418 0883450100427 0883450100755 0883450108621 0883450108720 0883450116138 0883450116206 0883450130783 0883450130851 0883450139274 0883450139342

Dimensions

Dimension A	5-1/2 in 139.7 mm
Dimension B	11.01 in 279.7 mm
Dimension C	7.48 in 190 mm
Dimension D Min	13.75 in 349.3 mm
Dimension D Max	15.88 in 403.4 mm
Dimension E	2.75 in 69.9 mm
Dimension F	17-1/2 in 444.5 mm
Dimension G	5.04 in 128 mm

Dimension H	1.54 in 39.1 mm
Dimension J (Bolt Size)	0.875 in 24 mm
Dimension L	6.03 in 153.2 mm
Dimension RVV	1.24 in 31.5 mm
Dimension SVV	7.02 in 178.3 mm

Radial and Thrust Factors

C0 - Static Load	237000 lbf 1060000 N
C - Dynamic Load (Basic)	194000 lbf 863000 N
e - Geometry Factor	0.25
Y1 - Geometry Factor	2.67
Y2 - Geometry Factor	3.98

Engineering Seal Speed

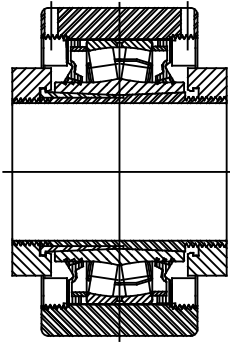
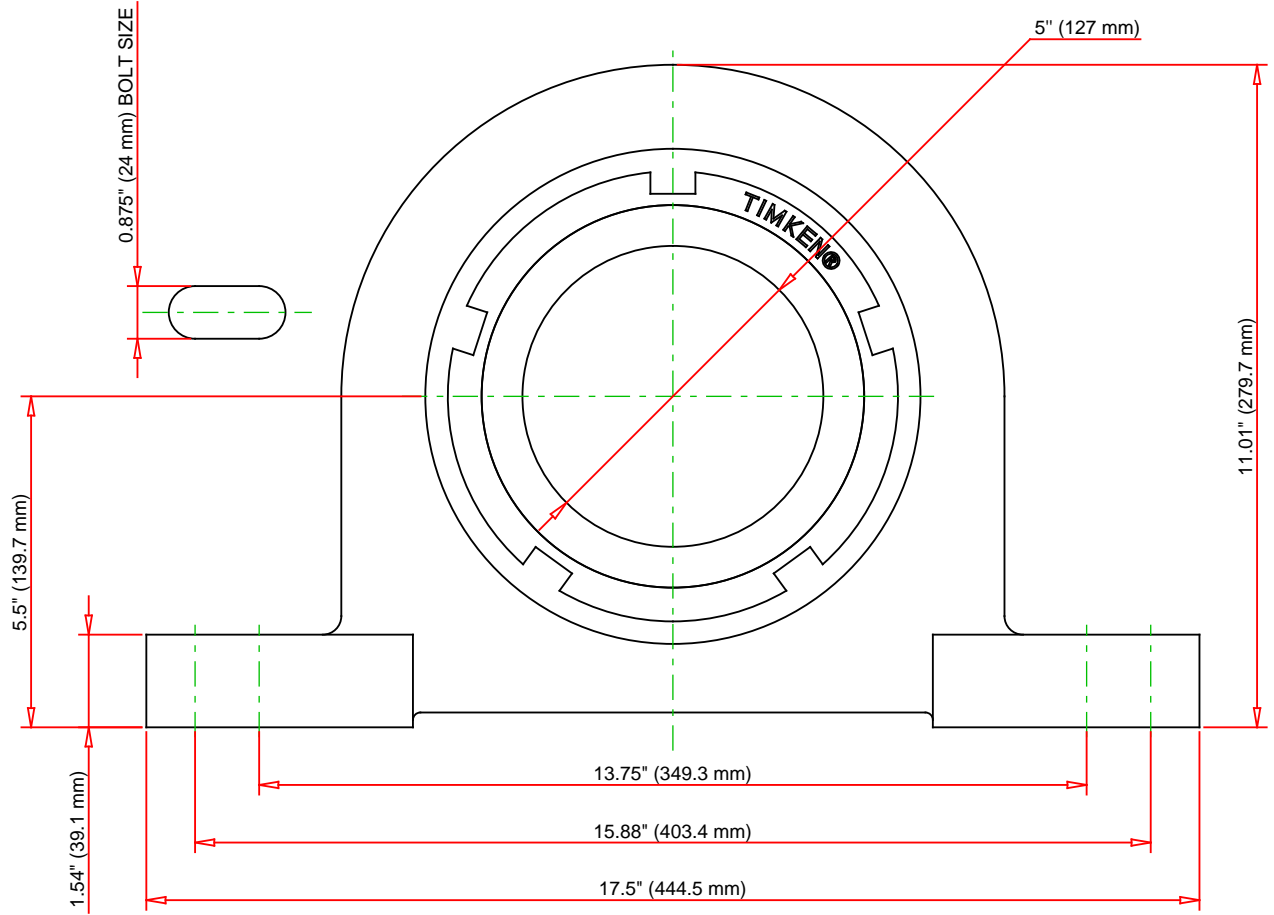
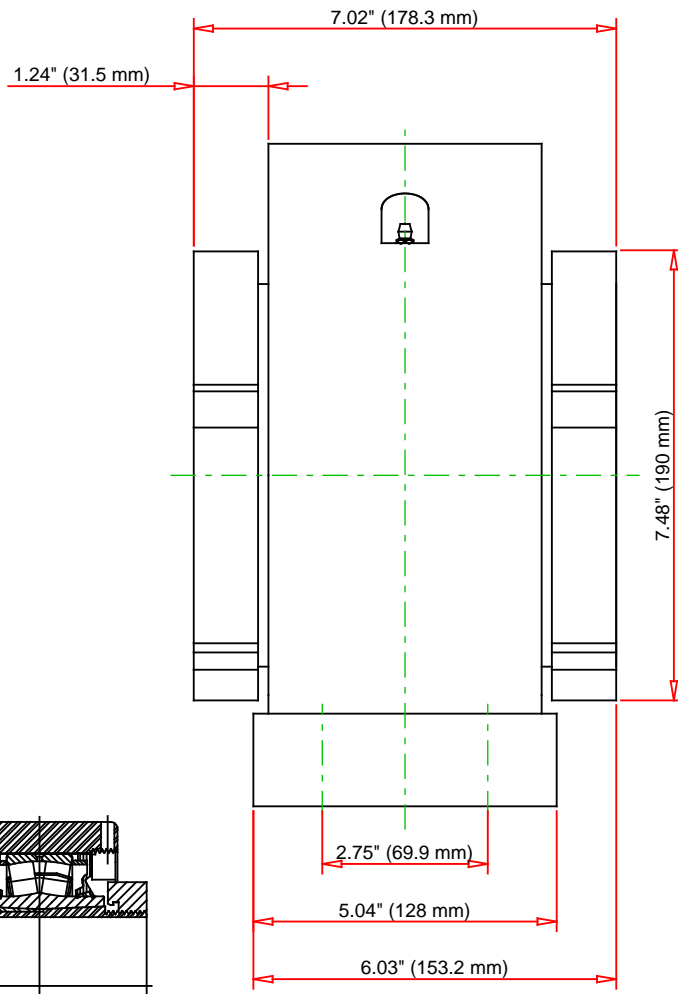
Oil Lubrication - M/N Seal	650 rpm
Oil Lubrication - T Seal	1200 rpm
Oil Lubrication - B/C/O Seal	350 rpm
Grease Lubrication - M/N Seal	650 rpm
Grease Lubrication - T Seal	900 rpm
Grease Lubrication - B/C/O Seal	350 rpm

Engineering Bearing Attributes

Float	0.083 in 2.108 mm
Shaft Tolerance	0.0050 in 0.127 mm

Engineering Internal Radial Clearance

Eng Internal Radial Clearance - Min	0.0063
Eng Internal Radial Clearance - Max	0.0079
Pre Install Clearance Min	0.0063 in 0.160 mm
Pre Install Clearance Max	0.0079 in 0.201 mm



Note: Section View not to Scale

C - Dynamic Load	194000	lbf	863000	N
C0 - Static Load	237000	lbf	1060000	N
Weight	134	lb	60.8	kg
Max. Speed T-Seals & Grease	900	rpm		
Rad. Clearance - Max.	0.0079			

TIMKEN
 THE TIMKEN COMPANY
 NORTH CANTON, OHIO USA

QVVPF28V500S
 Double V-Lock Four-Bolt Pillow Block

Every reasonable effort has been made to ensure the accuracy of the information contained in this writing, but no liability is accepted for errors, omissions or for any other reason.

FOR DISCUSSION ONLY