



The Timken Company

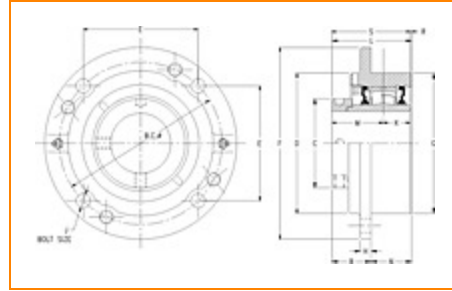
4500 Mt Pleasant St. NW

N. Canton, OH 44720

Phone: (234) 262-3000

E-Mail: CustomerCAD@timken.com • **Web site:** www.timken.com

Part Number QMC10J050S, Eccentric Piloted Flange Cartridge



[Specifications](#) | [Dimensions](#) | [Radial and Thrust Factors](#) | [Engineering Seal Speed](#) | [Engineering Bearing Attributes](#) | [Engineering Internal Radial Clearance](#)

Specifications

Engineering Group Mounted Bearing

Bearing Number 22210

Shaft Size 50 mm

Shaft Size Type Metric

Full Timken Part Number

- QMC10J050SB
- QMC10J050SC
- QMC10J050SEB
- QMC10J050SEC
- QMC10J050SEM
- QMC10J050SEN
- QMC10J050SEO
- QMC10J050SET
- QMC10J050SM
- QMC10J050SMB
- QMC10J050SN
- QMC10J050SO
- QMC10J050SOYDR



QMC10J050ST

Locking Style

Eccentric

Housing Construction

Piloted Flange Cartridge

UPC Code

0883450058629
 0883450058636
 0883450058650
 0883450058667
 0883450058674
 0883450058681
 0883450058698
 0883450058704
 0883450165600
 0883450166027
 0883450257848
 0883450258227
 0883450409414
 0883450497442

Dimensions**Dimension BC**

5.38 in
 136.7 mm

Dimension B Exp

2.07 in
 52.6 mm

Dimension B Fix

1.99 in
 50.5 mm

Dimension C

2.76 in
 70.1 mm

Dimension D

4.47 in
 113.5 mm

Dimension E

3.8 in
 96.5 mm

Dimension F

6.38 in
 162.1 mm

Dimension G	4.5 in 114.3 mm
Dimension H	0.63 in 16 mm
Dimension J (Bolt Size)	0.438 in 10 mm
Dimension K	1 in 25.4 mm
Dimension L Exp	3.13 in 79.5 mm
Dimension L Fix	3.05 in 77.5 mm
Dimension M	1.88 in 48.5 mm
Dimension N	1.06 in 26.9 mm
Dimension R	0.18 in 4.6 mm
Dimension S	2.87 in 72.9 mm

Radial and Thrust Factors

C0 - Static Load	26600 lbf 118000 N
C - Dynamic Load (Basic)	26300 lbf 117000 N
e - Geometry Factor	0.24
Y1 - Geometry Factor	2.84
Y2 - Geometry Factor	4.23

Engineering Seal Speed

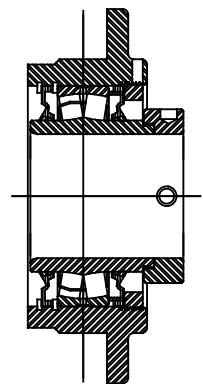
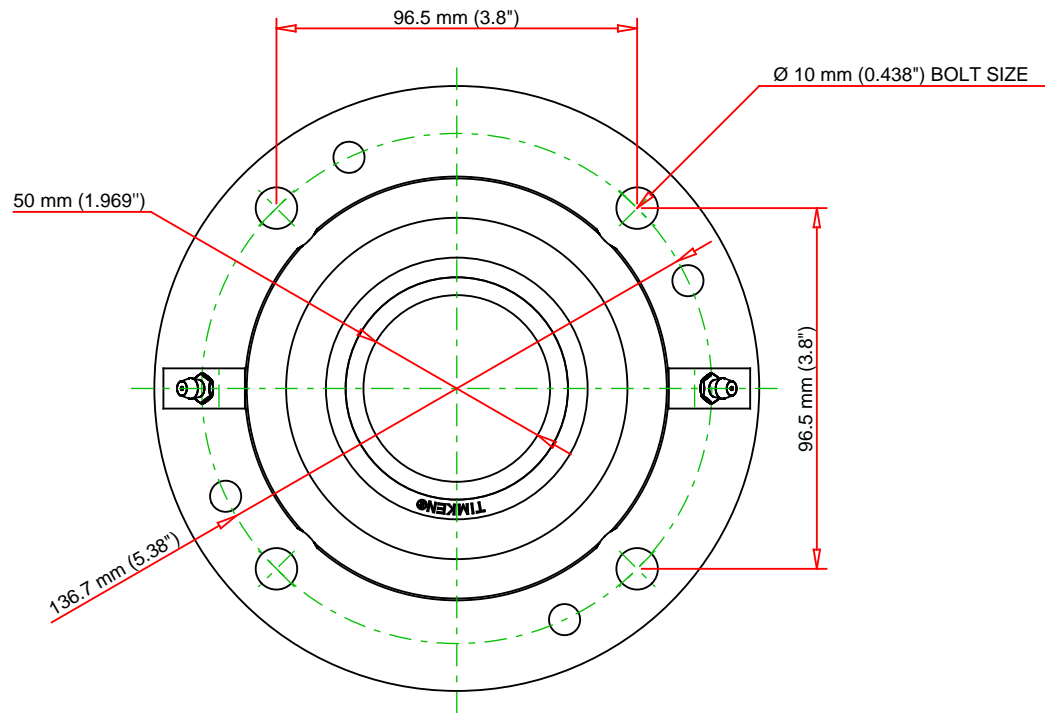
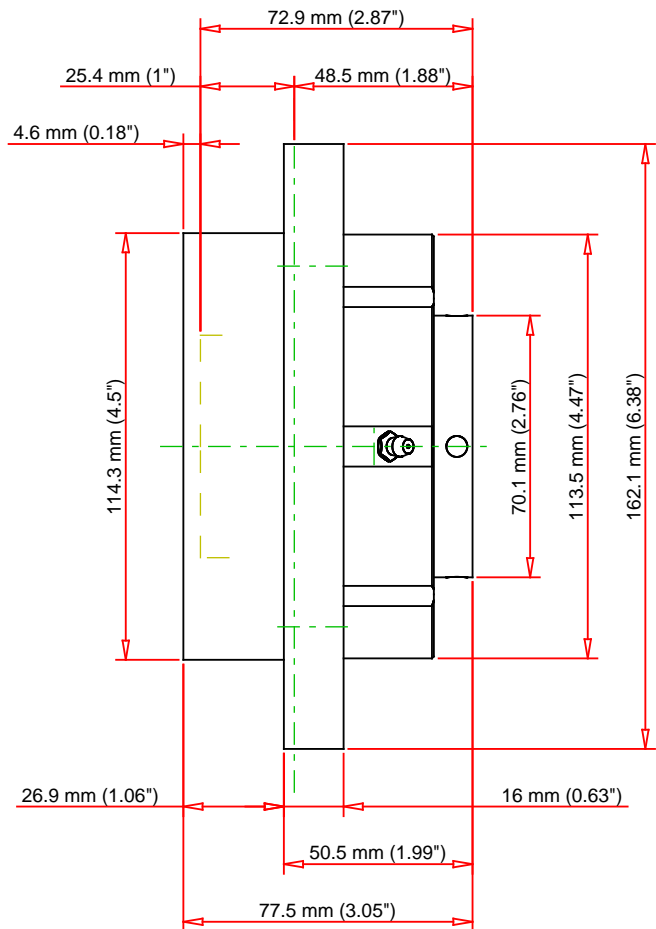
Oil Lubrication - M/N Seal	2400 rpm
Oil Lubrication - T Seal	4200 rpm
Oil Lubrication - B/C/O Seal	1800 rpm
Grease Lubrication - M/N Seal	2400 rpm
Grease Lubrication - T Seal	3550 rpm
Grease Lubrication - B/C/O Seal	1800 rpm

Engineering Bearing Attributes

Float	0.050 in 1.270 mm
Shaft Tolerance	0.0015 in 0.038 mm

Engineering Internal Radial Clearance

Eng Internal Radial Clearance - Min	0.0016
Eng Internal Radial Clearance - Max	0.0026
Pre Install Clearance Min	0.0016 in 0.040 mm
Pre Install Clearance Max	0.0026 in 0.065 mm



Note: Section View not to Scale

C - Dynamic Load	26300	lbf	117000	N
C0 - Static Load	26600	lbf	118000	N
Weight	10	lb	4.5	kg
Max. Speed T-Seals & Grease	3550	rpm		
Rad. Clearance - Max.	0.0026			

TIMKEN

THE TIMKEN COMPANY
NORTH CANTON, OHIO USA

QMC10J050S
Eccentric Piloted Flange Cartridge

Every reasonable effort has been made to ensure the accuracy of the information contained in this writing, but no liability is accepted for errors, omissions or for any other reason.

FOR DISCUSSION ONLY