



The Timken Company

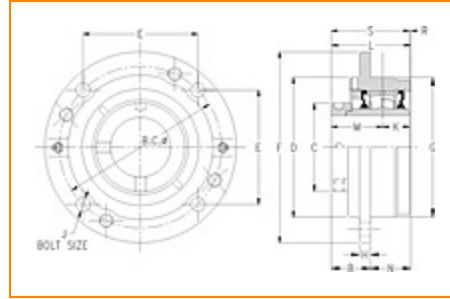
4500 Mt Pleasant St. NW

N. Canton, OH 44720

Phone: (234) 262-3000

E-Mail: CustomerCAD@timken.com • **Web site:** www.timken.com

Part Number QMCW13J208S, Eccentric Piloted Flange Cartridge



[Specifications](#) | [Dimensions](#) | [Radial and Thrust Factors](#) | [Engineering Seal Speed](#) | [Engineering Bearing Attributes](#) | [Engineering Internal Radial Clearance](#)

Specifications

Engineering Group Mounted Bearing

Bearing Number 22213

Shaft Size 2 1/2 in

Shaft Size Type Imperial

Full Timken Part Number

- QMCW13J208SB
- QMCW13J208SC
- QMCW13J208SEB
- QMCW13J208SEC
- QMCW13J208SEM
- QMCW13J208SEN
- QMCW13J208SEO
- QMCW13J208SET
- QMCW13J208SM
- QMCW13J208SN
- QMCW13J208SO
- QMCW13J208ST



Locking Style	Eccentric
Housing Construction	Piloted Flange Cartridge
UPC Code	0883450062527 0883450062534 0883450062558 0883450062565 0883450062572 0883450062589 0883450062596 0883450062602 0883450166485 0883450167208 0883450258661 0883450259200

Dimensions

Dimension BC	6-1/2 in 165.1 mm
Dimension B Exp	1.95 in 49.5 mm
Dimension B Fix	1.87 in 47.5 mm
Dimension C	3.62 in 91.9 mm
Dimension D	5.5 in 139.7 mm
Dimension E	4.6 in 116.8 mm
Dimension F	7.63 in 193.8 mm
Dimension G	5.5 in 139.7 mm

Dimension H	0.5 in 12.7 mm
Dimension J (Bolt Size)	0.5 in 12 mm
Dimension K	1.24 in 31.5 mm
Dimension L Exp	3.63 in 92.2 mm
Dimension L Fix	3.55 in 90.2 mm
Dimension M	2.13 in 54.1 mm
Dimension N	1.69 in 42.9 mm
Dimension R	0.17 in 4.3 mm
Dimension S	3.37 in 85.6 mm

Radial and Thrust Factors

C0 - Static Load	48600 lbf 216000 N
C - Dynamic Load (Basic)	46400 lbf 206000 N
e - Geometry Factor	0.24
Y1 - Geometry Factor	2.79
Y2 - Geometry Factor	4.15

Engineering Seal Speed

Oil Lubrication - M/N Seal	1800 rpm
-----------------------------------	----------

Oil Lubrication - T Seal	3200 rpm
---------------------------------	----------

Oil Lubrication - B/C/O Seal	1500 rpm
-------------------------------------	----------

Grease Lubrication - M/N Seal	1800 rpm
--------------------------------------	----------

Grease Lubrication - T Seal	2800 rpm
------------------------------------	----------

Grease Lubrication - B/C/O Seal	1500 rpm
----------------------------------------	----------

Engineering Bearing Attributes

Float	0.083 in 2.108 mm
--------------	----------------------

Shaft Tolerance	0.0015 in 0.038 mm
------------------------	-----------------------

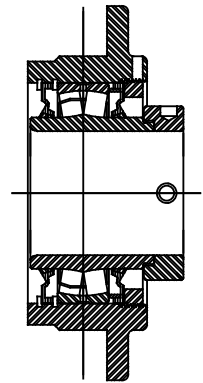
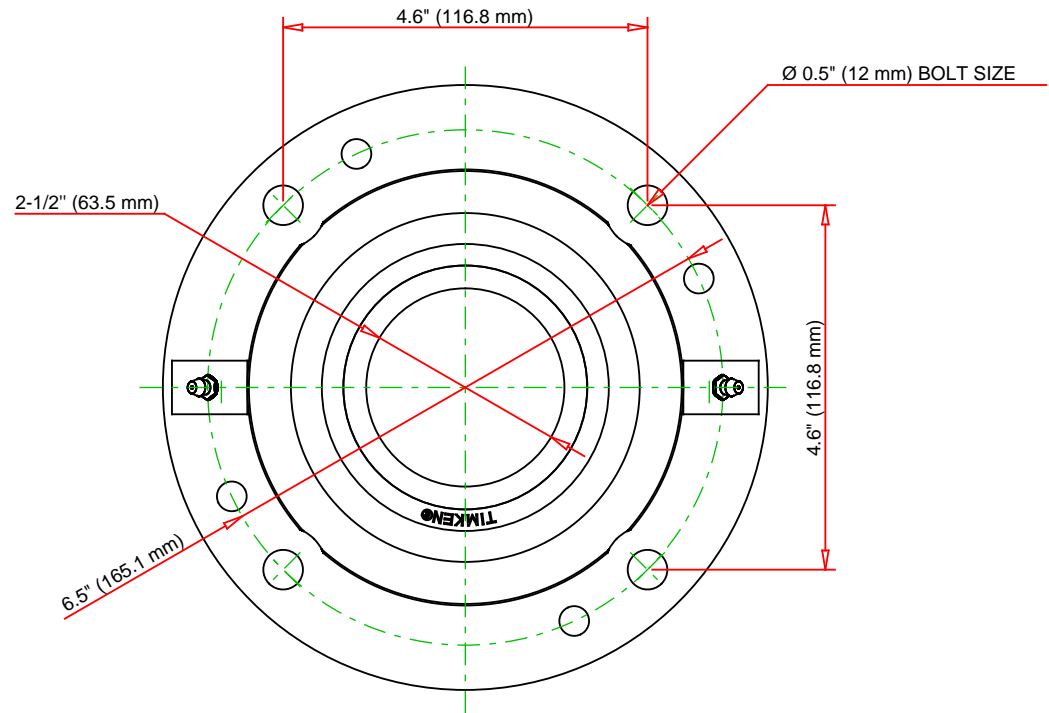
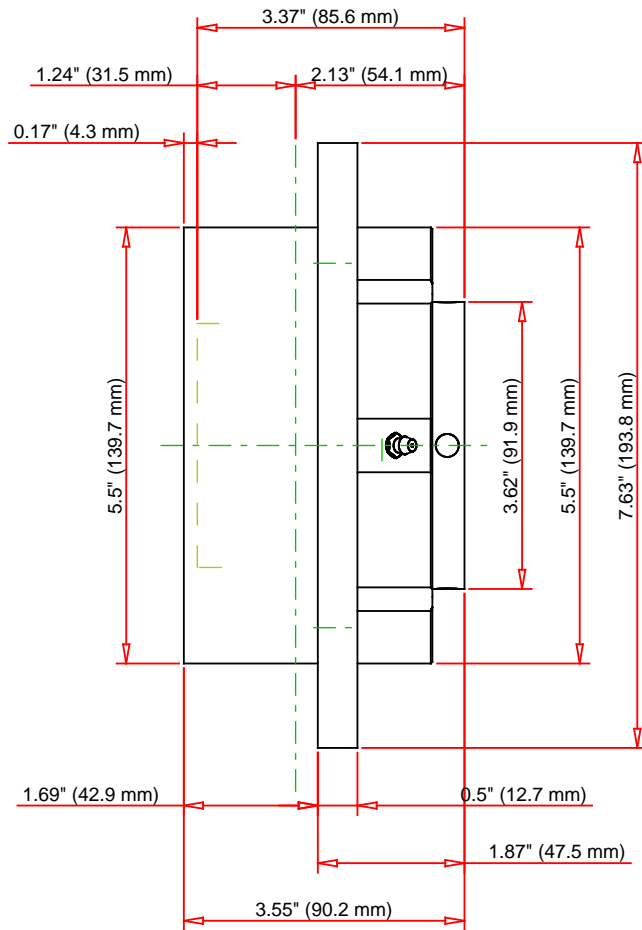
Engineering Internal Radial Clearance

Eng Internal Radial Clearance - Min	0.0016
--------------------------------------------	--------

Eng Internal Radial Clearance - Max	0.0026
--------------------------------------------	--------

Pre Install Clearance Min	0.0016 in 0.040 mm
----------------------------------	-----------------------

Pre Install Clearance Max	0.0026 in 0.065 mm
----------------------------------	-----------------------



Note: Section View not to Scale

C - Dynamic Load	46400	lbf	206000	N
C0 - Static Load	48600	lbf	216000	N
Weight	16	lb	7.3	kg
Max. Speed T-Seals & Grease	2800	rpm		
Rad. Clearance - Max.	0.0026			

TIMKEN

THE TIMKEN COMPANY
NORTH CANTON, OHIO USA

QMCW13J208S
Eccentric Piloted Flange Cartridge

Every reasonable effort has been made to ensure the accuracy of the information contained in this writing, but no liability is accepted for errors, omissions or for any other reason.

FOR DISCUSSION ONLY