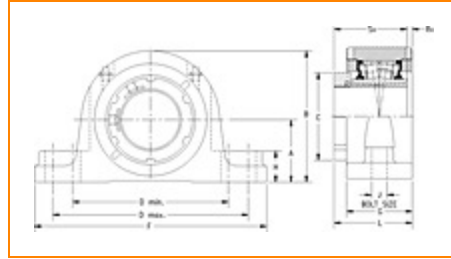
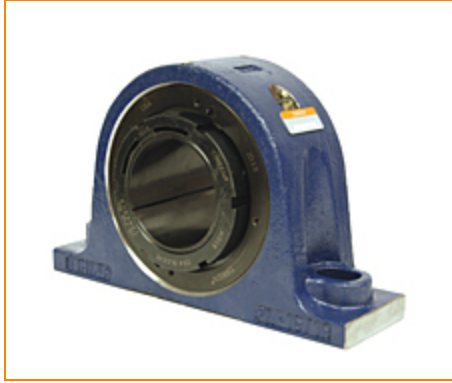


TIMKEN**The Timken Company**

4500 Mt Pleasant St. NW

N. Canton, OH 44720

Phone: (234) 262-3000**E-Mail:** CustomerCAD@timken.com • **Web site:** www.timken.com**Part Number QVPL16V211S, Single V-Lock Two-Bolt Pillow Block**

[Specifications](#) | [Dimensions](#) | [Radial and Thrust Factors](#) | [Engineering Seal Speed](#) | [Engineering Bearing Attributes](#) | [Engineering Internal Radial Clearance](#)

Specifications

Engineering Group Mounted Bearing

Bearing Number 22216

Shaft Size 2 11/16 in

Shaft Size Type Imperial

Full Timken Part Number

- QVPL16V211SB
- QVPL16V211SC
- QVPL16V211SEB
- QVPL16V211SEC
- QVPL16V211SEM
- QVPL16V211SEN
- QVPL16V211SEO
- QVPL16V211SET
- QVPL16V211SM
- QVPL16V211SMNG
- QVPL16V211SN
- QVPL16V211SO
- QVPL16V211ST



Locking Style	Single V-Lock
Housing Construction	Two-Bolt Pillow Block
UPC Code	0883450113113 0883450113137 0883450113144 0883450113151 0883450172080 0883450172844 0883450202855 0883450203234 0883450215275 0883450215657 0883450227698 0883450228077 0883450476126

Dimensions

Dimension A	3.25 in 82.6 mm
Dimension B	6.59 in 167.4 mm
Dimension C	4.19 in 106.4 mm
Dimension D Min	7.7 in 195.6 mm
Dimension D Max	8.4 in 213.4 mm
Dimension F	10.44 in 265.2 mm
Dimension G	3 in 76.2 mm
Dimension H	1.38 in 35.1 mm

Dimension J (Bolt Size)	0.75 in 20 mm
Dimension L	3.59 in 91.2 mm
Dimension RV	0.2 in 5.1 mm
Dimension SV	3.29 in 83.6 mm

Radial and Thrust Factors

C0 - Static Load	62500 lbf 278000 N
C - Dynamic Load (Basic)	57200 lbf 254000 N
e - Geometry Factor	0.22
Y1 - Geometry Factor	3.14
Y2 - Geometry Factor	4.67

Engineering Seal Speed

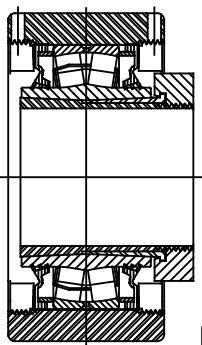
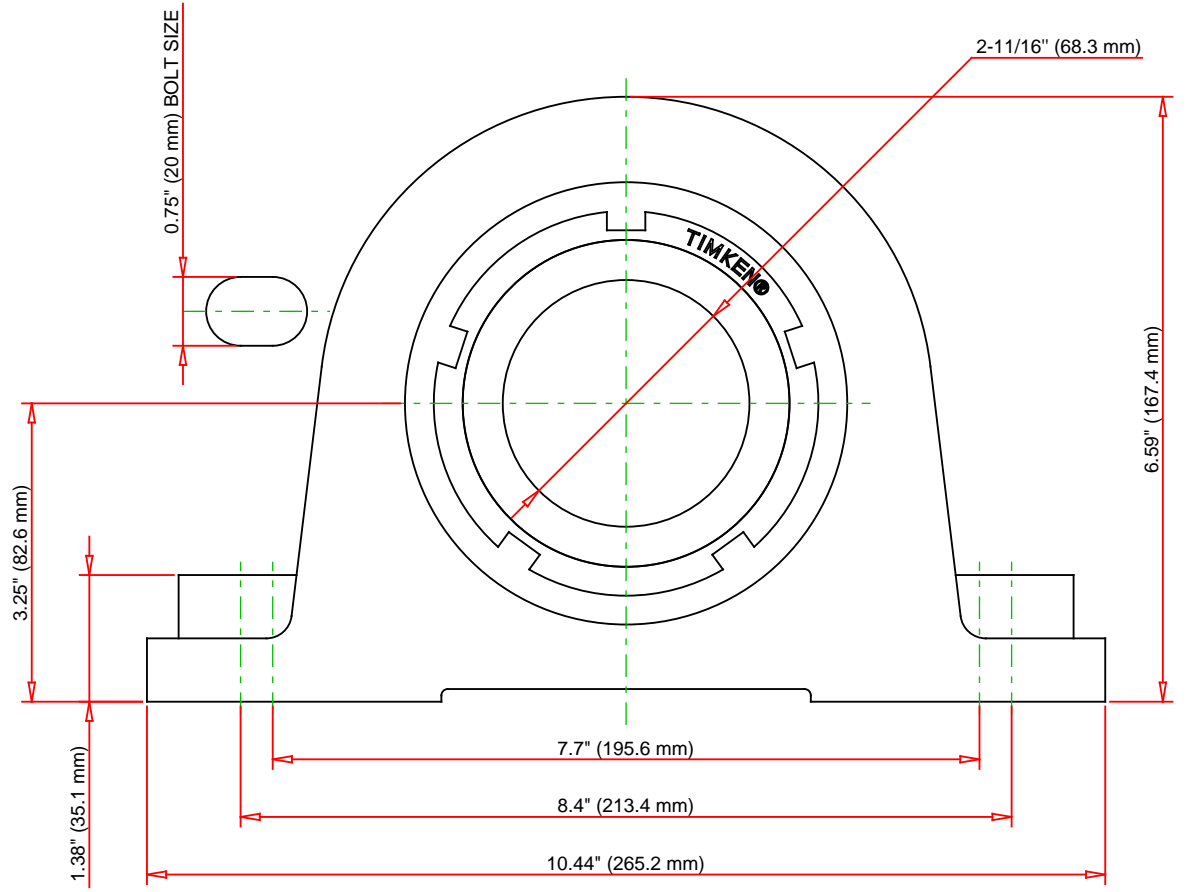
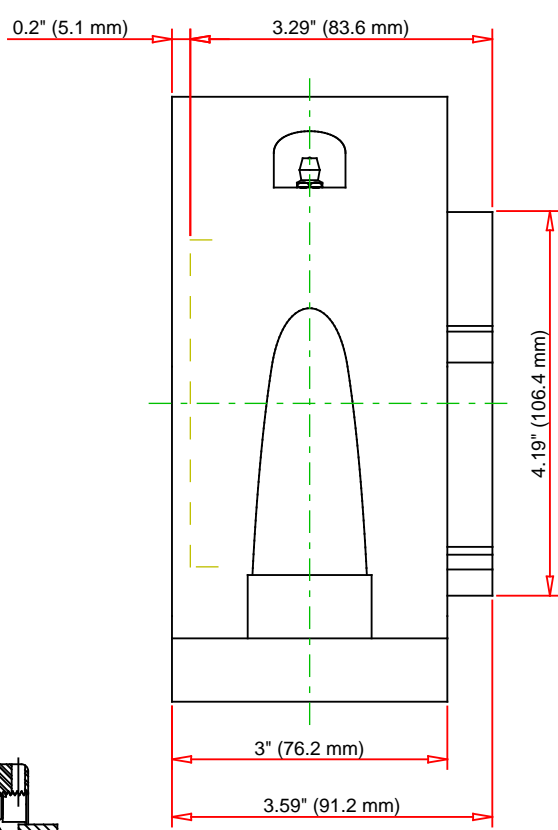
Oil Lubrication - M/N Seal	1500 rpm
Oil Lubrication - T Seal	2650 rpm
Oil Lubrication - B/C/O Seal	1200 rpm
Grease Lubrication - M/N Seal	1500 rpm
Grease Lubrication - T Seal	2200 rpm
Grease Lubrication - B/C/O Seal	1150 rpm

Engineering Bearing Attributes

Float	0.083 in 2.108 mm
Shaft Tolerance	0.0020 in 0.051 mm

Engineering Internal Radial Clearance

Eng Internal Radial Clearance - Min	0.0037
Eng Internal Radial Clearance - Max	0.0047
Pre Install Clearance Min	0.0037 in 0.095 mm
Pre Install Clearance Max	0.0047 in 0.120 mm



Note: Section View not to Scale

C - Dynamic Load	57200	lbf	254000	N
C0 - Static Load	62500	lbf	278000	N
Weight	28	lb	12.7	kg
Max. Speed T-Seals & Grease	2200	rpm		
Rad. Clearance - Max.	0.0047			

TIMKEN

THE TIMKEN COMPANY
NORTH CANTON, OHIO USA

QVPL16V211S
Single V-Lock Two-Bolt Pillow Block

Every reasonable effort has been made to ensure the accuracy of the information contained in this writing, but no liability is accepted for errors, omissions or for any other reason.

FOR DISCUSSION ONLY