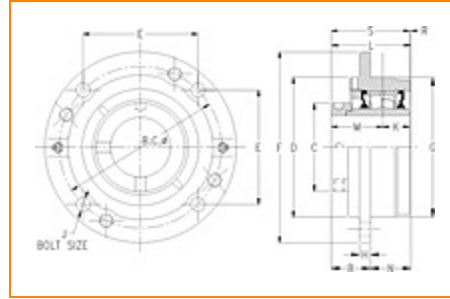


TIMKEN**The Timken Company**

4500 Mt Pleasant St. NW

N. Canton, OH 44720

Phone: (234) 262-3000**E-Mail:** CustomerCAD@timken.com • **Web site:** www.timken.com**Part Number QMCW11J203S, Eccentric Piloted Flange Cartridge**

[Specifications](#) | [Dimensions](#) | [Radial and Thrust Factors](#) | [Engineering Seal Speed](#) | [Engineering Bearing Attributes](#) | [Engineering Internal Radial Clearance](#)

Specifications

Engineering Group Mounted Bearing

Bearing Number 22211

Shaft Size 2 3/16 in

Shaft Size Type Imperial

Full Timken Part Number

- QMCW11J203SB
- QMCW11J203SC
- QMCW11J203SEB
- QMCW11J203SEC
- QMCW11J203SEM
- QMCW11J203SEN
- QMCW11J203SEO
- QMCW11J203SET
- QMCW11J203SLRC
- QMCW11J203SM
- QMCW11J203SMB
- QMCW11J203SN
- QMCW11J203SO



QMCW11J203ST

Locking Style

Eccentric

Housing Construction

Piloted Flange Cartridge

UPC Code

0883450062121
 0883450062138
 0883450062152
 0883450062169
 0883450062176
 0883450062183
 0883450062190
 0883450062206
 0883450166454
 0883450167178
 0883450258616
 0883450259156
 0883450410953
 0883450495769

Dimensions**Dimension BC**

6 in
 152.4 mm

Dimension B Exp

1.88 in
 47.8 mm

Dimension B Fix

1.8 in
 45.7 mm

Dimension C

2.99 in
 75.9 mm

Dimension D

5 in
 127 mm

Dimension E

4.24 in
 107.7 mm

Dimension F

7.13 in
 181.1 mm

Dimension G	5 in 127 mm
Dimension H	0.56 in 14.2 mm
Dimension J (Bolt Size)	0.5 in 12 mm
Dimension K	1.13 in 28.7 mm
Dimension L Exp	3.5 in 88.9 mm
Dimension L Fix	3.42 in 86.9 mm
Dimension M	1.99 in 50.5 mm
Dimension N	1.63 in 41.4 mm
Dimension R	0.3 in 7.6 mm
Dimension S	3.12 in 79.2 mm

Radial and Thrust Factors

C0 - Static Load	31900 lbf 142000 N
C - Dynamic Load (Basic)	31400 lbf 140000 N
e - Geometry Factor	0.23
Y1 - Geometry Factor	2.95
Y2 - Geometry Factor	4.40

Engineering Seal Speed

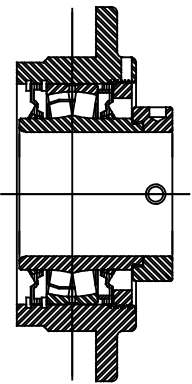
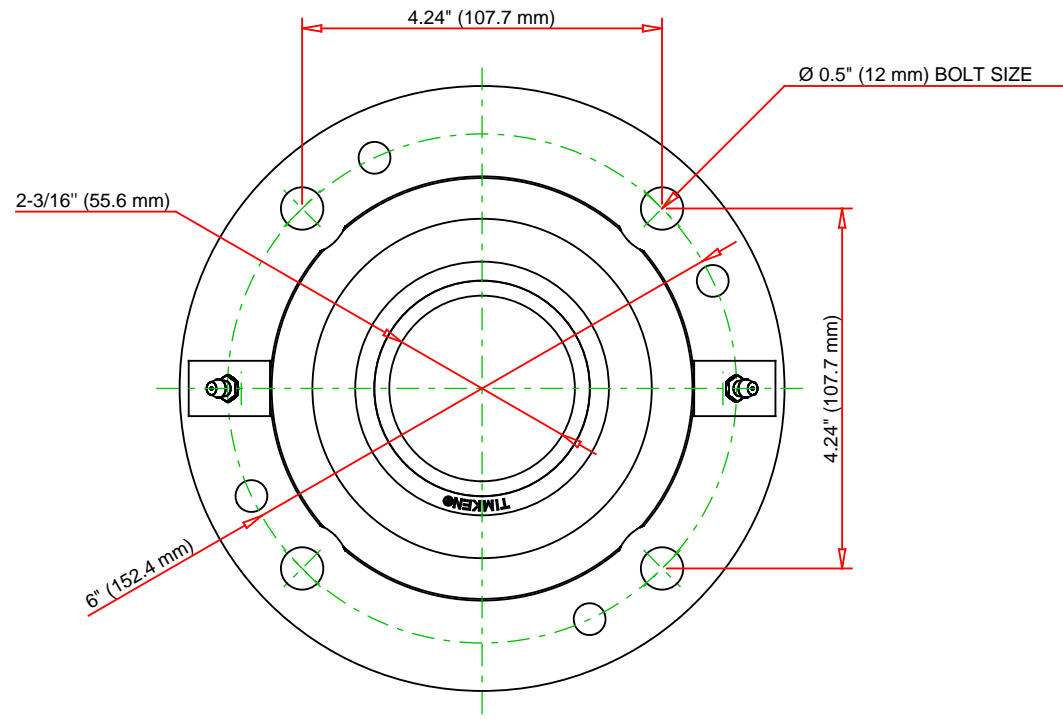
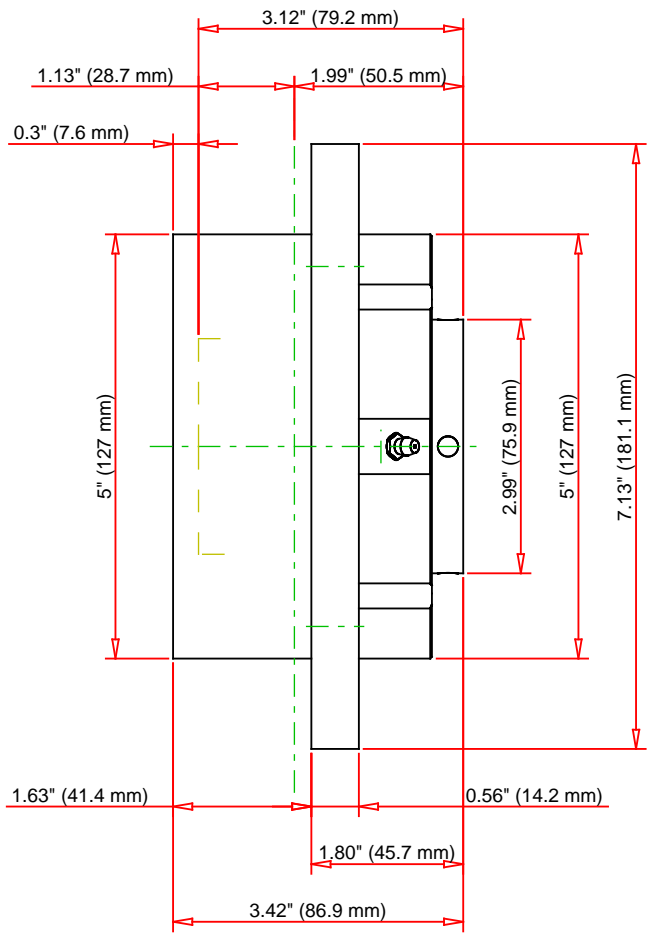
Oil Lubrication - M/N Seal	2200 rpm
Oil Lubrication - T Seal	3800 rpm
Oil Lubrication - B/C/O Seal	1600 rpm
Grease Lubrication - M/N Seal	2200 rpm
Grease Lubrication - T Seal	3200 rpm
Grease Lubrication - B/C/O Seal	1600 rpm

Engineering Bearing Attributes

Float	0.050 in 1.270 mm
Shaft Tolerance	0.0015 in 0.038 mm

Engineering Internal Radial Clearance

Eng Internal Radial Clearance - Min	0.0016
Eng Internal Radial Clearance - Max	0.0026
Pre Install Clearance Min	0.0016 in 0.040 mm
Pre Install Clearance Max	0.0026 in 0.065 mm



Note: Section View not to Scale

C - Dynamic Load	31400	lbf	140000	N
C0 - Static Load	31900	lbf	142000	N
Weight	13	lb	5.9	kg
Max. Speed T-Seals & Grease	3200	rpm		
Rad. Clearance - Max.	0.0026			

TIMKEN
THE TIMKEN COMPANY
NORTH CANTON, OHIO USA

QMCW11J203S
Eccentric Piloted Flange Cartridge

Every reasonable effort has been made to ensure the accuracy of the information contained in this writing, but no liability is accepted for errors, omissions or for any other reason.

FOR DISCUSSION ONLY