



**The Timken Company**

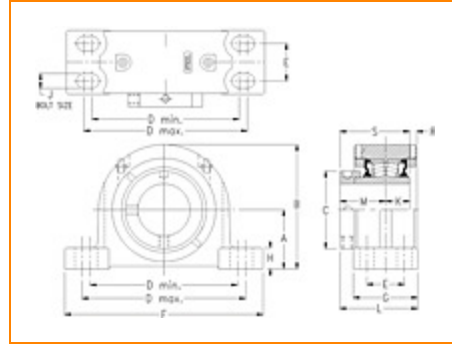
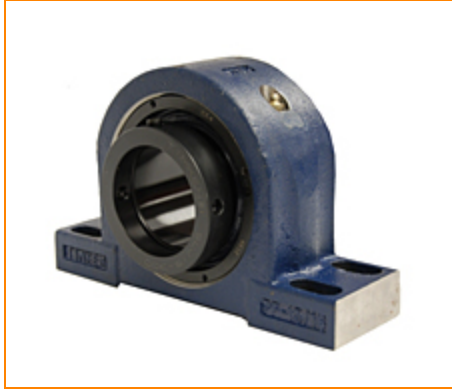
4500 Mt Pleasant St. NW

N. Canton, OH 44720

**Phone:** (234) 262-3000

**E-Mail:** [CustomerCAD@timken.com](mailto:CustomerCAD@timken.com) • **Web site:** [www.timken.com](http://www.timken.com)

## Part Number QMPF34J607S, Eccentric Four-Bolt Pillow Block



[Specifications](#) | [Dimensions](#) | [Radial and Thrust Factors](#) | [Engineering Seal Speed](#) | [Engineering Bearing Attributes](#) | [Engineering Internal Radial Clearance](#)

### Specifications

**Engineering Group** Mounted Bearing

**Bearing Number** 23234

**Shaft Size** 6 7/16 in

**Shaft Size Type** Imperial

**Full Timken Part Number**

- QMPF34J607SB
- QMPF34J607SC
- QMPF34J607SEB
- QMPF34J607SEC
- QMPF34J607SEM
- QMPF34J607SEN
- QMPF34J607SEO
- QMPF34J607SET
- QMPF34J607SM
- QMPF34J607SN
- QMPF34J607SO
- QMPF34J607ST



<b>Locking Style</b>	Eccentric
<b>Housing Construction</b>	Four-Bolt Pillow Block
<b>UPC Code</b>	0883450086127 0883450086134 0883450086158 0883450086165 0883450086172 0883450086189 0883450086196 0883450086202 0883450156011 0883450156745 0883450250955 0883450251372

## Dimensions

<b>Dimension A</b>	7-1/2 in 190.5 mm
<b>Dimension B</b>	15.38 in 390.7 mm
<b>Dimension C</b>	9.25 in 235 mm
<b>Dimension D Min</b>	20.88 in 530.4 mm
<b>Dimension D Max</b>	23.63 in 600.2 mm
<b>Dimension E</b>	4.63 in 117.5 mm
<b>Dimension F</b>	26 in 660.4 mm
<b>Dimension G</b>	7.5 in 190.5 mm

<b>Dimension H</b>	2.5 in 63.5 mm
--------------------	-------------------

<b>Dimension J (Bolt Size)</b>	1 in 24 mm
--------------------------------	---------------

<b>Dimension K</b>	3.35 in 85.1 mm
--------------------	--------------------

<b>Dimension L</b>	8.83 in 224.3 mm
--------------------	---------------------

<b>Dimension M</b>	5.08 in 129 mm
--------------------	-------------------

<b>Dimension R</b>	0.22 in 5.6 mm
--------------------	-------------------

<b>Dimension S</b>	8.43 in 214.1 mm
--------------------	---------------------

## Radial and Thrust Factors

<b>C0 - Static Load</b>	494000 lbf 2200000 N
-------------------------	-------------------------

<b>C - Dynamic Load (Basic)</b>	373000 lbf 1660000 N
---------------------------------	-------------------------

<b>e - Geometry Factor</b>	0.33
----------------------------	------

<b>Y1 - Geometry Factor</b>	2.08
-----------------------------	------

<b>Y2 - Geometry Factor</b>	3.09
-----------------------------	------

## Engineering Seal Speed

<b>Oil Lubrication - M/N Seal</b>	600 rpm
-----------------------------------	---------

<b>Oil Lubrication - T Seal</b>	900 rpm
---------------------------------	---------

<b>Oil Lubrication - B/C/O Seal</b>	350 rpm
-------------------------------------	---------

<b>Grease Lubrication - M/N Seal</b>	600 rpm
--------------------------------------	---------

<b>Grease Lubrication - T Seal</b>	800 rpm
------------------------------------	---------

<b>Grease Lubrication - B/C/O Seal</b>	350 rpm
--	---------

## Engineering Bearing Attributes

<b>Float</b>	0.083 in
	2.108 mm

<b>Shaft Tolerance</b>	0.0050 in
	0.127 mm

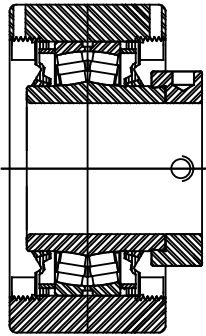
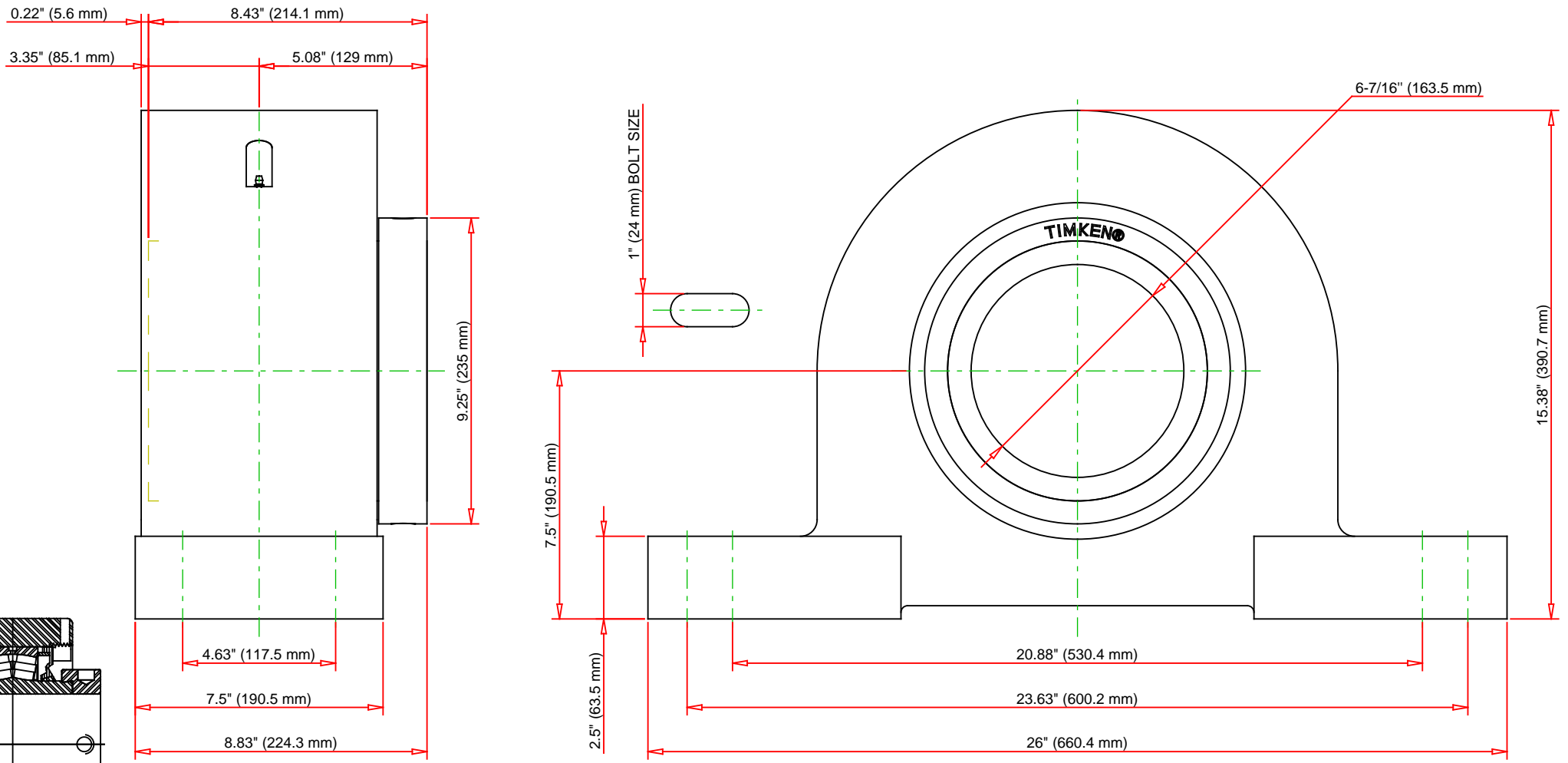
## Engineering Internal Radial Clearance

<b>Eng Internal Radial Clearance - Min</b>	0.0047
--	--------

<b>Eng Internal Radial Clearance - Max</b>	0.0071
--	--------

<b>Pre Install Clearance Min</b>	0.0047 in
	0.120 mm

<b>Pre Install Clearance Max</b>	0.0071 in
	0.180 mm



Note: Section View not to Scale

C - Dynamic Load	373000	lbf	1660000	N
C0 - Static Load	494000	lbf	2200000	N
Weight	375	lb	170.1	kg
Max. Speed T-Seals & Grease	800	rpm		
Rad. Clearance - Max.	0.0071			

**TIMKEN**

THE TIMKEN COMPANY  
NORTH CANTON, OHIO USA

**QMPF34J607S**  
Eccentric Four-Bolt Pillow Block

Every reasonable effort has been made to ensure the accuracy of the information contained in this writing, but no liability is accepted for errors, omissions or for any other reason.

**FOR DISCUSSION ONLY**