



The Timken Company

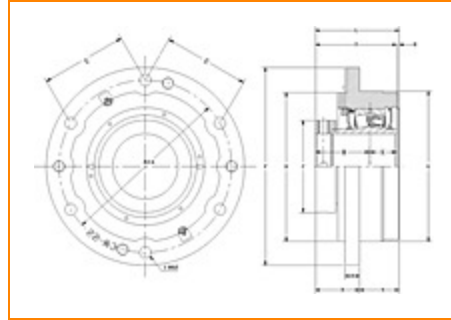
4500 Mt Pleasant St. NW

N. Canton, OH 44720

Phone: (234) 262-3000

E-Mail: CustomerCAD@timken.com • **Web site:** www.timken.com

Part Number QMCW22J408S, Eccentric Piloted Flange Cartridge



[Specifications](#) | [Dimensions](#) | [Radial and Thrust Factors](#) | [Engineering Seal Speed](#) | [Engineering Bearing Attributes](#) | [Engineering Internal Radial Clearance](#)

Specifications

Engineering Group Mounted Bearing

Bearing Number 22222

Shaft Size 4 1/2 in

Shaft Size Type Imperial

Full Timken Part Number

- QMCW22J408SB
- QMCW22J408SC
- QMCW22J408SEB
- QMCW22J408SEC
- QMCW22J408SEM
- QMCW22J408SEN
- QMCW22J408SEO
- QMCW22J408SET
- QMCW22J408SM
- QMCW22J408SN
- QMCW22J408SO
- QMCW22J408ST



Locking Style	Eccentric
Housing Construction	Piloted Flange Cartridge
UPC Code	0883450064521 0883450064538 0883450064552 0883450064569 0883450064576 0883450064583 0883450064590 0883450064606 0883450166706 0883450167420 0883450258883 0883450259422

Dimensions

Dimension BC	11-3/4 in 298.5 mm
Dimension B Exp	3.09 in 78.5 mm
Dimension B Fix	3.01 in 76.5 mm
Dimension C	6.3 in 160 mm
Dimension D	10 in 254 mm
Dimension E	5.88 in 149.4 mm
Dimension F	13-1/2 in 342.900 mm
Dimension G	10.25 in 260.4 mm

Dimension H	1 in 25.4 mm
Dimension J (Bolt Size)	0.75 in 20 mm
Dimension K	1.83 in 46.5 mm
Dimension L Exp	5.78 in 146.8 mm
Dimension L Fix	5.7 in 144.8 mm
Dimension M	3.7 in 94 mm
Dimension N	2.69 in 68.3 mm
Dimension R	0.17 in 4.3 mm
Dimension S	5.53 in 140.5 mm

Radial and Thrust Factors

C0 - Static Load	147000 lbf 653000 N
C - Dynamic Load (Basic)	125000 lbf 555000 N
e - Geometry Factor	0.25
Y1 - Geometry Factor	2.73
Y2 - Geometry Factor	4.06

Engineering Seal Speed

Oil Lubrication - M/N Seal	900 rpm
-----------------------------------	---------

Oil Lubrication - T Seal	1700 rpm
---------------------------------	----------

Oil Lubrication - B/C/O Seal	600 rpm
-------------------------------------	---------

Grease Lubrication - M/N Seal	900 rpm
--------------------------------------	---------

Grease Lubrication - T Seal	1200 rpm
------------------------------------	----------

Grease Lubrication - B/C/O Seal	600 rpm
--	---------

Engineering Bearing Attributes

Float	0.083 in 2.108 mm
--------------	----------------------

Shaft Tolerance	0.0050 in 0.127 mm
------------------------	-----------------------

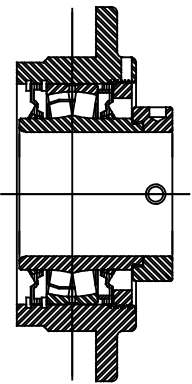
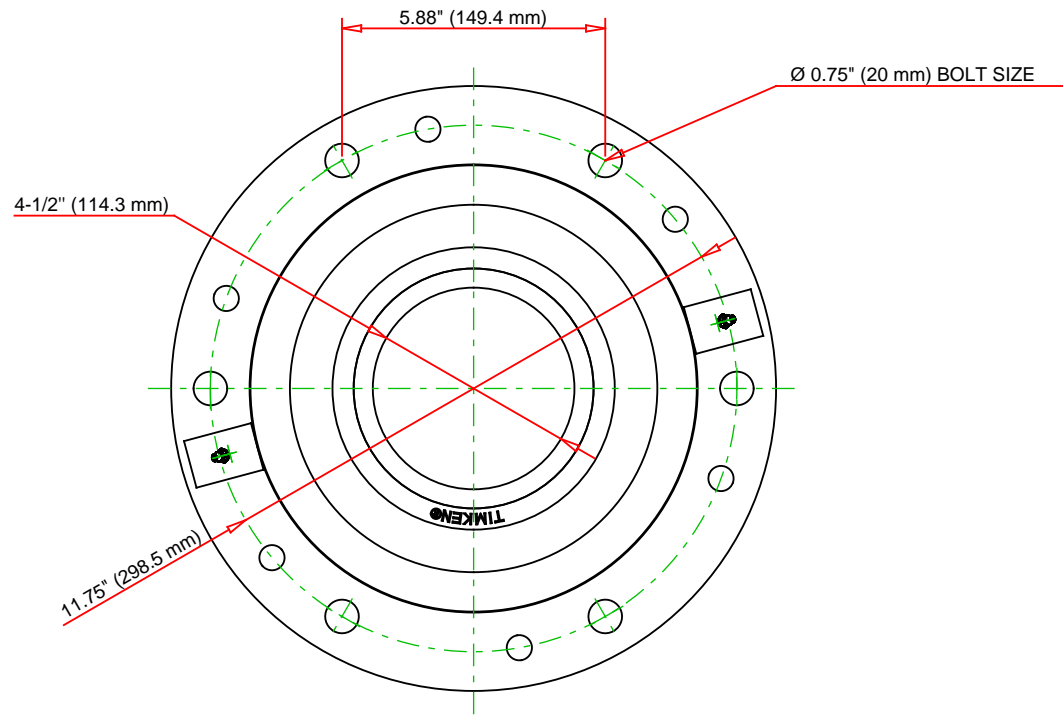
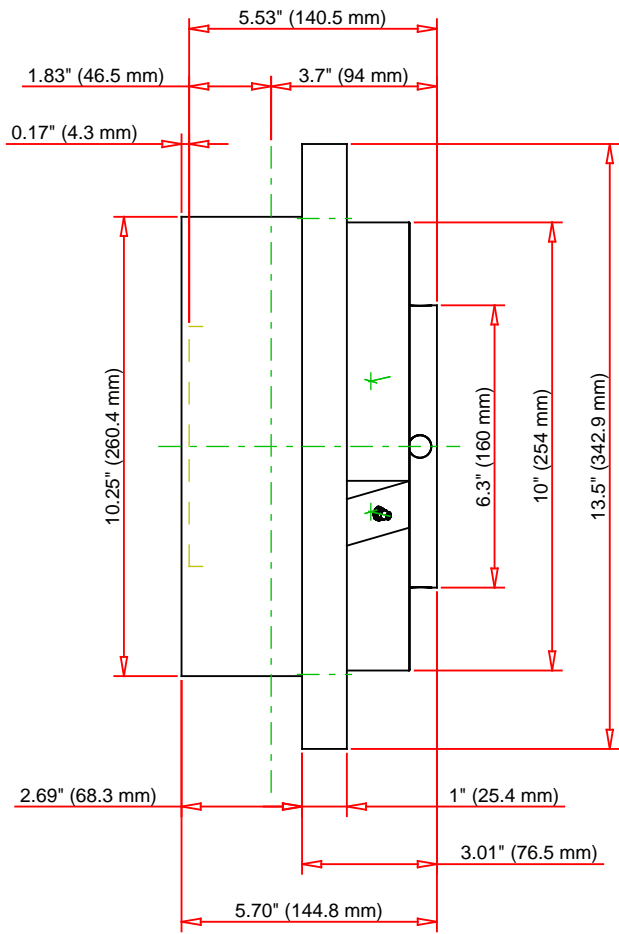
Engineering Internal Radial Clearance

Eng Internal Radial Clearance - Min	0.0030
--	--------

Eng Internal Radial Clearance - Max	0.0047
--	--------

Pre Install Clearance Min	0.0030 in 0.075 mm
----------------------------------	-----------------------

Pre Install Clearance Max	0.0047 in 0.120 mm
----------------------------------	-----------------------



Note: Section View not to Scale

C - Dynamic Load	125000	lbf	555000	N
C0 - Static Load	147000	lbf	653000	N
Weight	72	lb	32.7	kg
Max. Speed T-Seals & Grease	1200	rpm		
Rad. Clearance - Max.	0.0047			

TIMKEN

THE TIMKEN COMPANY
NORTH CANTON, OHIO USA

QMCW22J408S
Eccentric Piloted Flange Cartridge

Every reasonable effort has been made to ensure the accuracy of the information contained in this writing, but no liability is accepted for errors, omissions or for any other reason.

FOR DISCUSSION ONLY