



The Timken Company

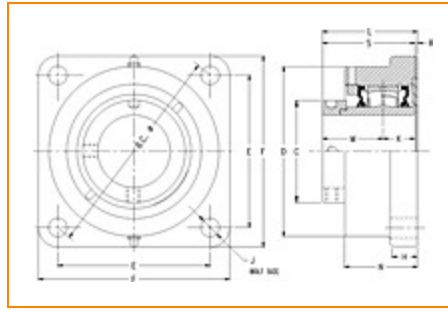
4500 Mt Pleasant St. NW

N. Canton, OH 44720

Phone: (234) 262-3000

E-Mail: CustomerCAD@timken.com • **Web site:** www.timken.com

Part Number QMFL09J112S, Eccentric Four Bolt Square Flange Block



[Specifications](#) | [Dimensions](#) | [Radial and Thrust Factors](#) | [Engineering Seal Speed](#) | [Engineering Bearing Attributes](#) | [Engineering Internal Radial Clearance](#)

Specifications

Engineering Group Mounted Bearing

Bearing Number 22209

Shaft Size 1 3/4 in

Shaft Size Type Imperial

Full Timken Part Number

- QMFL09J112SB
- QMFL09J112SC
- QMFL09J112SEB
- QMFL09J112SEC
- QMFL09J112SEM
- QMFL09J112SEN
- QMFL09J112SEO
- QMFL09J112SET
- QMFL09J112SM
- QMFL09J112SN
- QMFL09J112SO



QMFL09J112ST

Locking Style

Eccentric

Housing Construction

Four-Bolt Square Flange

UPC Code

0883450069724
 0883450069731
 0883450069755
 0883450069762
 0883450069779
 0883450069786
 0883450069793
 0883450069809
 0883450162906
 0883450163248
 0883450255233
 0883450255578

Dimensions**Dimension BC**

5.5 in
 139.7 mm

Dimension C

2.63 in
 66.8 mm

Dimension D

4.66 in
 118.4 mm

Dimension E

3.89 in
 98.8 mm

Dimension F

5.38 in
 136.7 mm

Dimension H

0.88 in
 22.4 mm

Dimension J (Bolt Size)

0.5 in
 12 mm

Dimension K

0.99 in
 25.1 mm

Dimension L Exp	3.21 in 81.5 mm
------------------------	--------------------

Dimension L Fix	3.13 in 79.5 mm
------------------------	--------------------

Dimension M	1.88 in 47.8 mm
--------------------	--------------------

Dimension N	2.5 in 63.5 mm
--------------------	-------------------

Dimension R	0.26 in 6.6 mm
--------------------	-------------------

Dimension S	2.87 in 72.9 mm
--------------------	--------------------

Radial and Thrust Factors

C0 - Static Load	24200 lbf 108000 N
-------------------------	-----------------------

C - Dynamic Load (Basic)	24500 lbf 109000 N
---------------------------------	-----------------------

e - Geometry Factor	0.27
----------------------------	------

Y1 - Geometry Factor	2.5
-----------------------------	-----

Y2 - Geometry Factor	3.72
-----------------------------	------

Engineering Seal Speed

Oil Lubrication - M/N Seal	2700 rpm
-----------------------------------	----------

Oil Lubrication - T Seal	4500 rpm
---------------------------------	----------

Oil Lubrication - B/C/O Seal	1950 rpm
-------------------------------------	----------

Grease Lubrication - M/N Seal	2700 rpm
--------------------------------------	----------

Grease Lubrication - T Seal	4000 rpm
------------------------------------	----------

Grease Lubrication - B/C/O Seal	1950 rpm
--	----------

Engineering Bearing Attributes

Float	0.050 in 1.270 mm
--------------	----------------------

Shaft Tolerance	0.0015 in 0.038 mm
------------------------	-----------------------

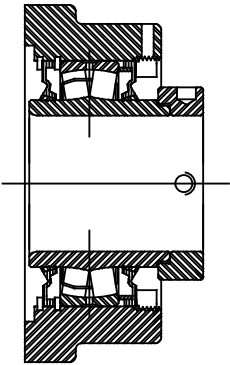
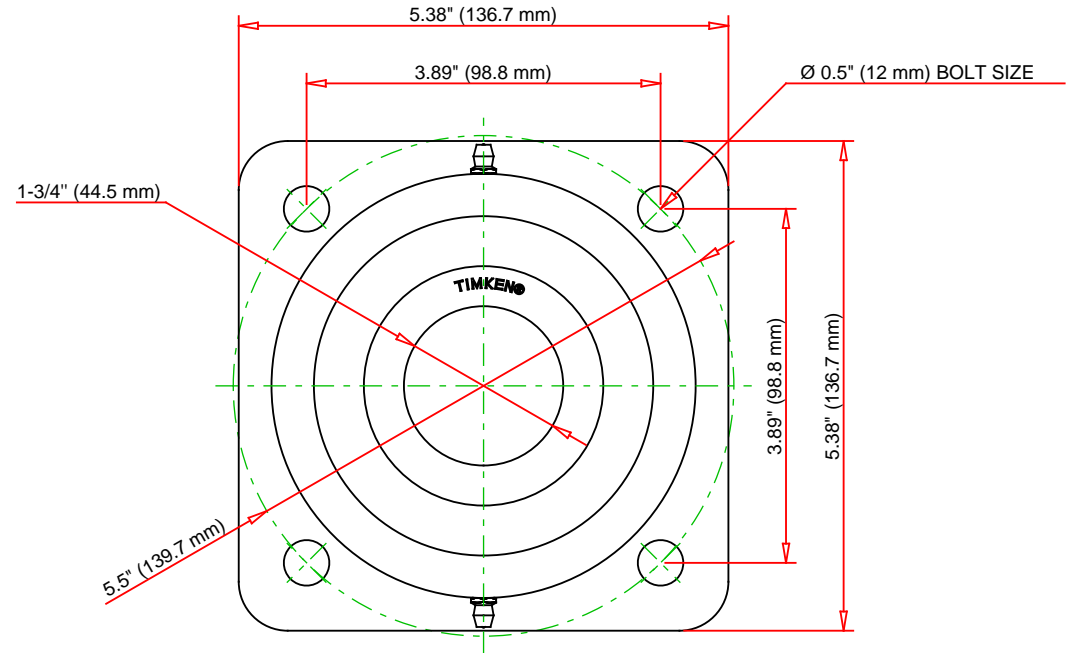
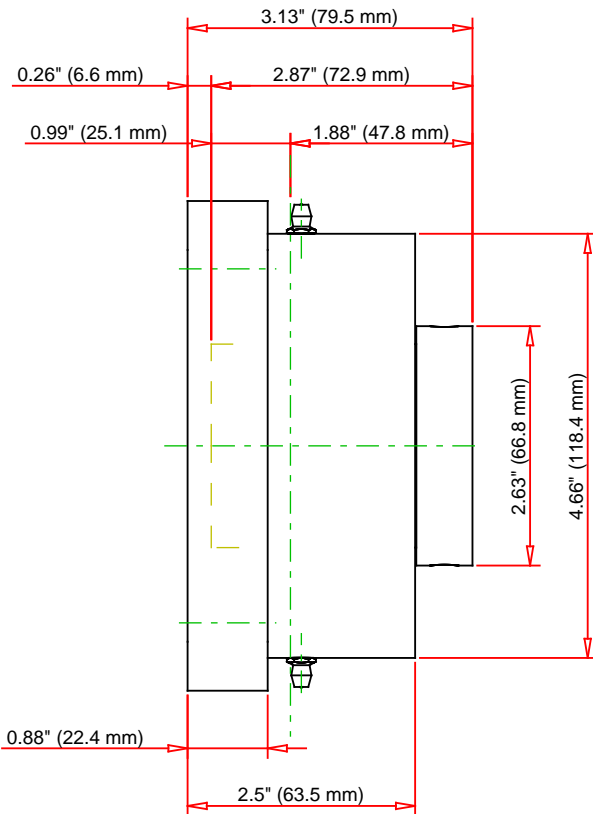
Engineering Internal Radial Clearance

Eng Internal Radial Clearance - Min	0.0014
--	--------

Eng Internal Radial Clearance - Max	0.0022
--	--------

Pre Install Clearance Min	0.0014 in 0.035 mm
----------------------------------	-----------------------

Pre Install Clearance Max	0.0022 in 0.055 mm
----------------------------------	-----------------------



Note: Section View not to Scale

C - Dynamic Load	24500	lbf	109000	N
C0 - Static Load	24200	lbf	108000	N
Weight	11	lb	5	kg
Max. Speed T-Seals & Grease	4000	rpm		
Rad. Clearance - Max.	0.0022			

TIMKEN

THE TIMKEN COMPANY
NORTH CANTON, OHIO USA

QMFL09J112S
Eccentric Four Bolt Square Flange
Block

Every reasonable effort has been made to ensure the accuracy of the information contained in this writing, but no liability is accepted for errors, omissions or for any other reason.

FOR DISCUSSION ONLY