



The Timken Company

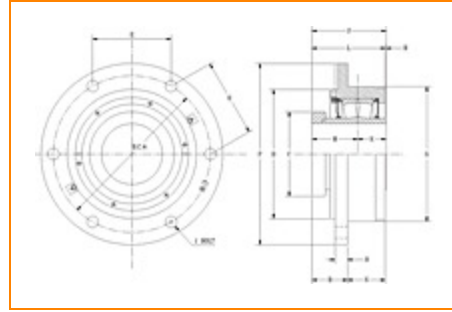
4500 Mt Pleasant St. NW

N. Canton, OH 44720

Phone: (234) 262-3000

E-Mail: CustomerCAD@timken.com • **Web site:** www.timken.com

Part Number QMCW30J150S, Eccentric Piloted Flange Cartridge



[Specifications](#) | [Dimensions](#) | [Radial and Thrust Factors](#) | [Engineering Seal Speed](#) | [Engineering Bearing Attributes](#) | [Engineering Internal Radial Clearance](#)

Specifications

Engineering Group Mounted Bearing

Bearing Number 23230

Shaft Size 150 mm

Shaft Size Type Metric

Full Timken Part Number

- QMCW30J150SB
- QMCW30J150SC
- QMCW30J150SEB
- QMCW30J150SEC
- QMCW30J150SEM
- QMCW30J150SEN
- QMCW30J150SEO
- QMCW30J150SET
- QMCW30J150SM
- QMCW30J150SN
- QMCW30J150SO
- QMCW30J150ST
- QMCW30J150STFG



Locking Style	Eccentric
Housing Construction	Piloted Flange Cartridge
UPC Code	0883450166812 0883450166911 0883450166973 0883450167031 0883450167093 0883450167536 0883450167635 0883450167697 0883450167758 0883450167819 0883450258999 0883450259538 0883450434614

Dimensions

Dimension BC	16.5 in 419.1 mm
Dimension B Exp	3.34 in 84.8 mm
Dimension B Fix	3.26 in 82.8 mm
Dimension C	8.07 in 205 mm
Dimension D	12 in 304.8 mm
Dimension E	8.25 in 209.6 mm
Dimension F	19.0000 in 482.600 mm
Dimension G	14 in 355.6 mm

Dimension H	1.03 in 26.2 mm
Dimension J (Bolt Size)	0.875 in 24 mm
Dimension K	2.99 in 75.9 mm
Dimension L Exp	8.4 in 213.4 mm
Dimension L Fix	8.32 in 211.3 mm
Dimension M	4.57 in 116.1 mm
Dimension N	5.06 in 128.5 mm
Dimension R	0.76 in 19.3 mm
Dimension S	7.56 in 192 mm

Radial and Thrust Factors

C0 - Static Load	372000 lbf 1660000 N
C - Dynamic Load (Basic)	286000 lbf 1270000 N
e - Geometry Factor	0.32
Y1 - Geometry Factor	2.08
Y2 - Geometry Factor	3.10

Engineering Seal Speed

Oil Lubrication - M/N Seal	650 rpm
-----------------------------------	---------

Oil Lubrication - T Seal	950 rpm
---------------------------------	---------

Oil Lubrication - B/C/O Seal	350 rpm
-------------------------------------	---------

Grease Lubrication - M/N Seal	600 rpm
--------------------------------------	---------

Grease Lubrication - T Seal	800 rpm
------------------------------------	---------

Grease Lubrication - B/C/O Seal	350 rpm
----------------------------------------	---------

Engineering Bearing Attributes

Float	0.083 in 2.108 mm
--------------	----------------------

Shaft Tolerance	0.0050 in 0.127 mm
------------------------	-----------------------

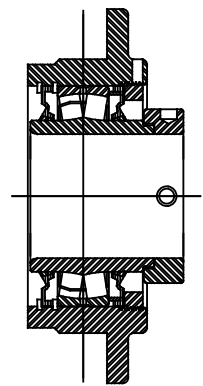
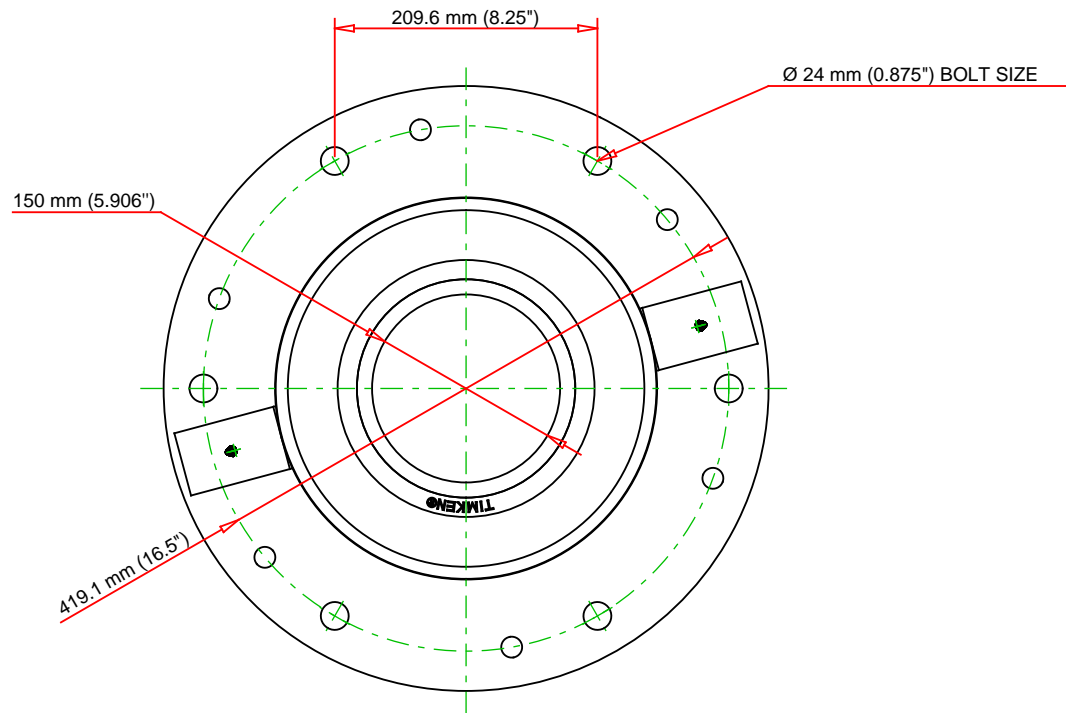
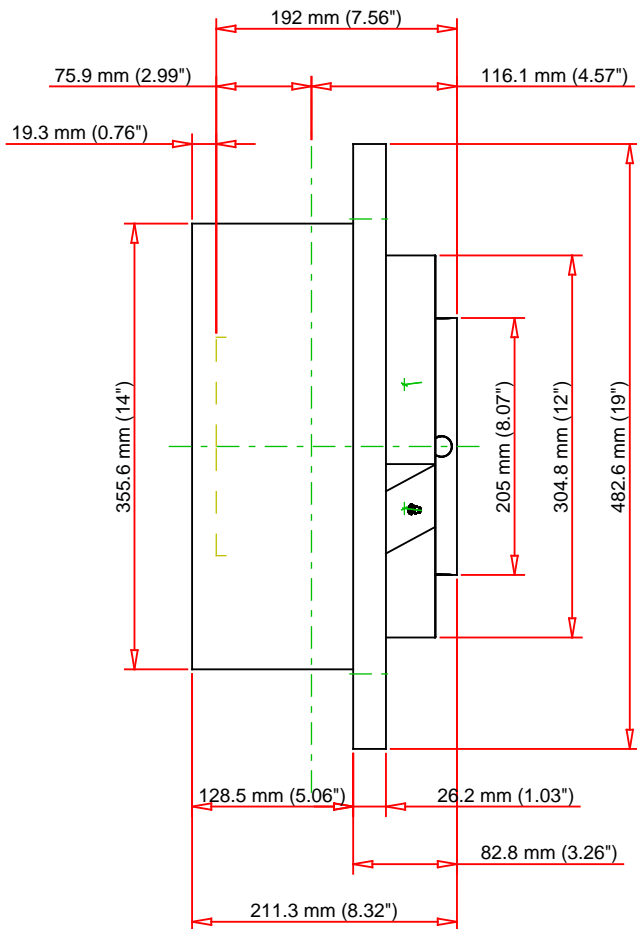
Engineering Internal Radial Clearance

Eng Internal Radial Clearance - Min	0.0043
--------------------------------------------	--------

Eng Internal Radial Clearance - Max	0.0067
--------------------------------------------	--------

Pre Install Clearance Min	0.0043 in 0.110 mm
----------------------------------	-----------------------

Pre Install Clearance Max	0.0067 in 0.170 mm
----------------------------------	-----------------------



Note: Section View not to Scale

C - Dynamic Load	286000	lbf	1270000	N
C0 - Static Load	372000	lbf	1660000	N
Weight	224	lb	101.6	kg
Max. Speed T-Seals & Grease	800	rpm		
Rad. Clearance - Max.	0.0067			

TIMKEN

THE TIMKEN COMPANY
NORTH CANTON, OHIO USA

QMCW30J150S
Eccentric Piloted Flange Cartridge

Every reasonable effort has been made to ensure the accuracy of the information contained in this writing, but no liability is accepted for errors, omissions or for any other reason.

FOR DISCUSSION ONLY