


The Timken Company

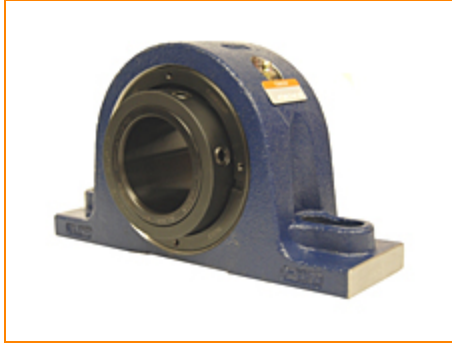
4500 Mt Pleasant St. NW

N. Canton, OH 44720

Phone: (234) 262-3000

E-Mail: CustomerCAD@timken.com • **Web site:** www.timken.com

Part Number QASN09A040S, Single Concentric Two-Bolt Pillow Block



[Specifications](#) | [Dimensions](#) | [Radial and Thrust Factors](#) | [Engineering Seal Speed](#) | [Engineering Bearing Attributes](#) | [Engineering Internal Radial Clearance](#)

Specifications

Engineering Group	Mounted Bearing
Bearing Number	22209
Shaft Size	40 mm
Shaft Size Type	Metric
Full Timken Part Number	QASN09A040SB QASN09A040SC QASN09A040SEB QASN09A040SEC QASN09A040SEM QASN09A040SEN QASN09A040SEO QASN09A040SET QASN09A040SM QASN09A040SN QASN09A040SO



QASN09A040ST

Locking Style

Single Concentric

Housing Construction

Two-Bolt Pillow Block

UPC Code

883450963237
 883450963244
 883450963251
 883450964142
 883450964159
 883450964166
 883450964173
 883450964180
 883450964197
 883450964203
 883450964210
 883450964227

Dimensions**Dimension A**

2.36 in
 60 mm

Dimension B

4.37 in
 111 mm

Dimension C

2.63 in
 66.8 mm

Dimension D Min

6.26 in
 159 mm

Dimension D Max

6.89 in
 175 mm

Dimension F

8.07 in
 205 mm

Dimension G

2.44 in
 62 mm

Dimension H

1.38 in
 35 mm

Dimension J (Bolt Size)	0.5 in 12 mm
Dimension KA	0.98 in 25 mm
Dimension L	3.11 in 78 mm
Dimension M	1.88 in 47.8 mm
Dimension RA	0.22 in 5.6 mm
Dimension SA	2.87 in 73 mm

Radial and Thrust Factors

C0 - Static Load	24200 lbf 108000 N
C - Dynamic Load (Basic)	24500 lbf 109000 N
e - Geometry Factor	0.26
Y1 - Geometry Factor	2.64
Y2 - Geometry Factor	3.93

Engineering Seal Speed

Oil Lubrication - M/N Seal	2700 rpm
Oil Lubrication - T Seal	4500 rpm
Oil Lubrication - B/C/O Seal	1950 rpm
Grease Lubrication - M/N Seal	2700 rpm

Grease Lubrication - T Seal	4000 rpm
------------------------------------	----------

Grease Lubrication - B/C/O Seal	1950 rpm
--	----------

Engineering Bearing Attributes

Float	0.050 in 1.270 mm
--------------	----------------------

Shaft Tolerance	0.0015 in 0.038 mm
------------------------	-----------------------

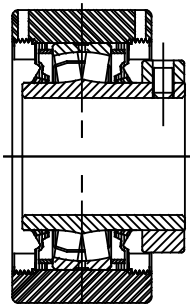
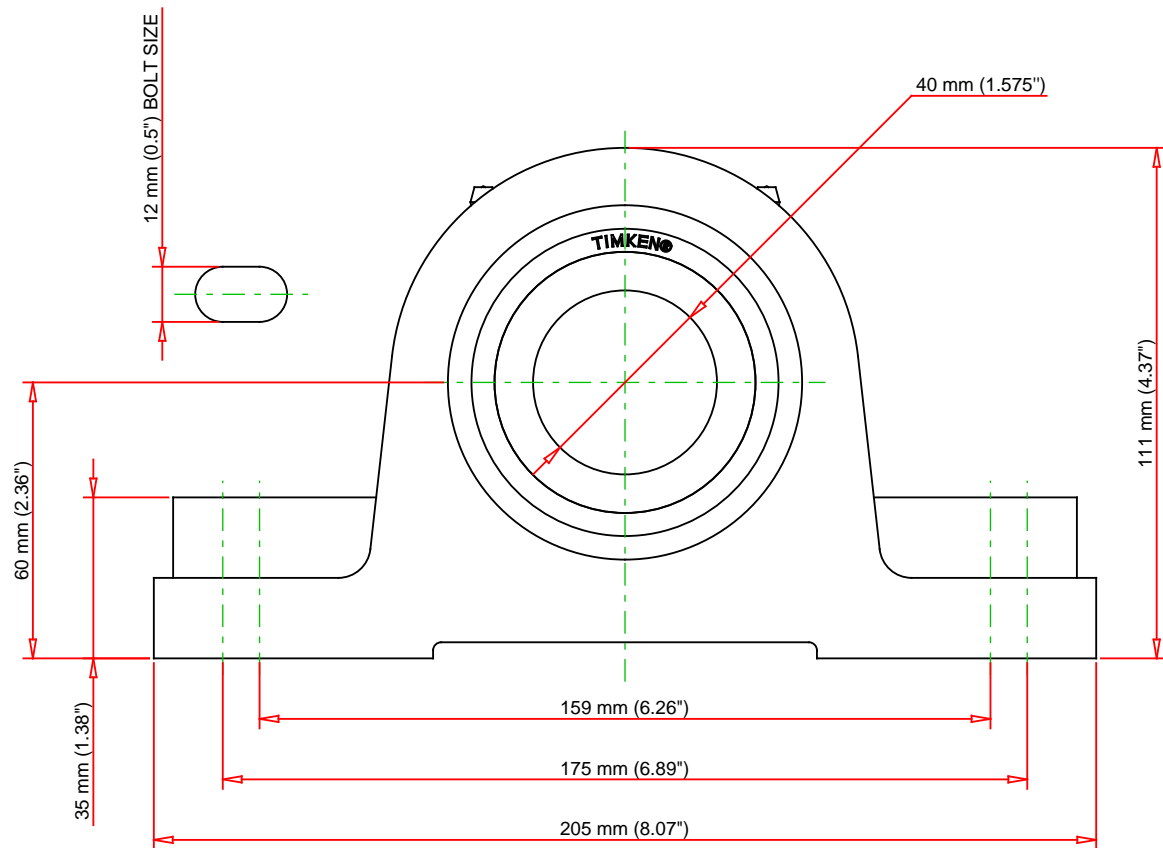
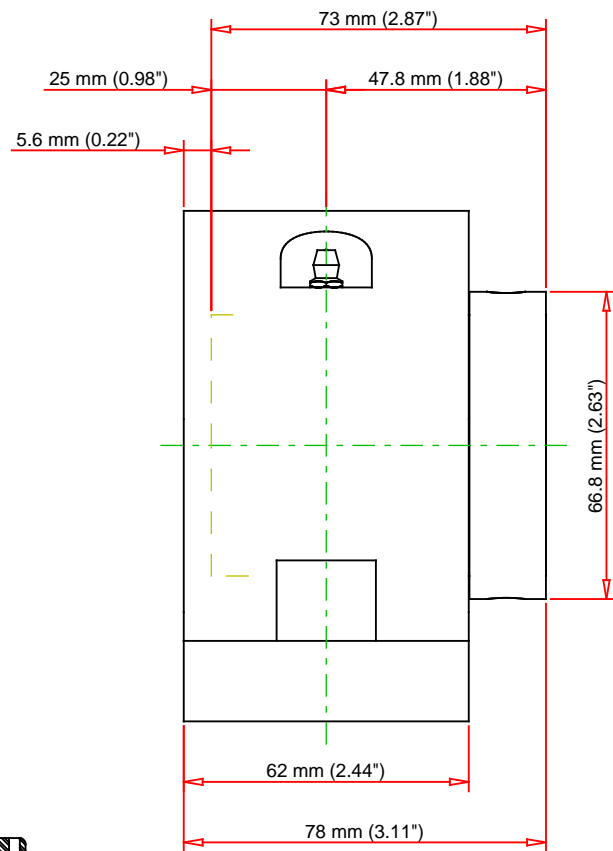
Engineering Internal Radial Clearance

Eng Internal Radial Clearance - Min	0.0014
--	--------

Eng Internal Radial Clearance - Max	0.0022
--	--------

Pre Install Clearance Min	0.0014 in 0.035 mm
----------------------------------	-----------------------

Pre Install Clearance Max	0.0022 in 0.055 mm
----------------------------------	-----------------------



Note: Section View not to Scale

C - Dynamic Load	24500	lbf	109000	N
C0 - Static Load	24200	lbf	108000	N
Weight	10.5	lb	23	kg
Max. Speed T-Seals & Grease	4000	rpm		
Rad. Clearance - Max.	0.0022			

TIMKEN

THE TIMKEN COMPANY
NORTH CANTON, OHIO USA

QASN09A040S

Single Concentric Two-Bolt Pillow Block

Every reasonable effort has been made to ensure the accuracy of the information contained in this writing, but no liability is accepted for errors, omissions or for any other reason.

FOR DISCUSSION ONLY