



The Timken Company

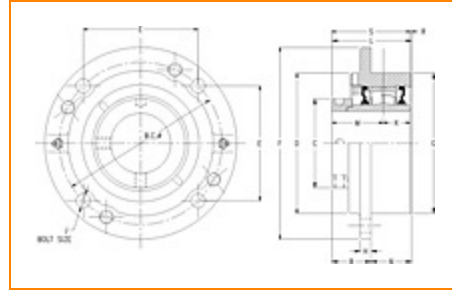
4500 Mt Pleasant St. NW

N. Canton, OH 44720

Phone: (234) 262-3000

E-Mail: CustomerCAD@timken.com • **Web site:** www.timken.com

Part Number QMC10J200S, Eccentric Piloted Flange Cartridge



[Specifications](#) | [Dimensions](#) | [Radial and Thrust Factors](#) | [Engineering Seal Speed](#) | [Engineering Bearing Attributes](#) | [Engineering Internal Radial Clearance](#)

Specifications

Engineering Group Mounted Bearing

Bearing Number 22210

Shaft Size 2 in

Shaft Size Type Imperial

Full Timken Part Number

- QMC10J200SB
- QMC10J200SC
- QMC10J200SCSLA
- QMC10J200SCSLD
- QMC10J200SEB
- QMC10J200SEC
- QMC10J200SEM
- QMC10J200SEN
- QMC10J200SEO
- QMC10J200SET
- QMC10J200SM
- QMC10J200SMB
- QMC10J200SN



QMC10J200SO
QMC10J200ST

Locking Style

Eccentric

Housing Construction

Piloted Flange Cartridge

UPC Code

0883450058827
0883450058834
0883450058858
0883450058865
0883450058872
0883450058889
0883450058896
0883450058902
0883450165594
0883450166010
0883450257831
0883450258210
0883450409421
0883450433365
0883450472692

Dimensions**Dimension BC**

5.38 in
136.7 mm

Dimension B Exp

2.07 in
52.6 mm

Dimension B Fix

1.99 in
50.5 mm

Dimension C

2.76 in
70.1 mm

Dimension D

4.47 in
113.5 mm

Dimension E

3.8 in
96.5 mm

| | |
|--------------------------------|---------------------|
| Dimension F | 6.38 in 162.1 mm |
| Dimension G | 4.5 in 114.3 mm |
| Dimension H | 0.63 in 16 mm |
| Dimension J (Bolt Size) | 0.438 in 10 mm |
| Dimension K | 1 in 25.4 mm |
| Dimension L Exp | 3.13 in 79.5 mm |
| Dimension L Fix | 3.05 in 77.5 mm |
| Dimension M | 1.9 in 50.5 mm |
| Dimension N | 1.06 in 26.9 mm |
| Dimension R | 0.18 in 4.6 mm |
| Dimension S | 2.87 in 72.9 mm |

Radial and Thrust Factors

| | |
|---------------------------------|-----------------------|
| C0 - Static Load | 26600 lbf 118000 N |
| C - Dynamic Load (Basic) | 26300 lbf 117000 N |
| e - Geometry Factor | 0.24 |
| Y1 - Geometry Factor | 2.84 |

| | |
|-----------------------------|------|
| Y2 - Geometry Factor | 4.23 |
|-----------------------------|------|

Engineering Seal Speed

| | |
|-----------------------------------|----------|
| Oil Lubrication - M/N Seal | 2400 rpm |
|-----------------------------------|----------|

| | |
|---------------------------------|----------|
| Oil Lubrication - T Seal | 4200 rpm |
|---------------------------------|----------|

| | |
|-------------------------------------|----------|
| Oil Lubrication - B/C/O Seal | 1800 rpm |
|-------------------------------------|----------|

| | |
|--------------------------------------|----------|
| Grease Lubrication - M/N Seal | 2400 rpm |
|--------------------------------------|----------|

| | |
|------------------------------------|----------|
| Grease Lubrication - T Seal | 3550 rpm |
|------------------------------------|----------|

| | |
|--|----------|
| Grease Lubrication - B/C/O Seal | 1800 rpm |
|--|----------|

Engineering Bearing Attributes

| | |
|--------------|----------------------|
| Float | 0.050 in 1.270 mm |
|--------------|----------------------|

| | |
|------------------------|-----------------------|
| Shaft Tolerance | 0.0015 in 0.038 mm |
|------------------------|-----------------------|

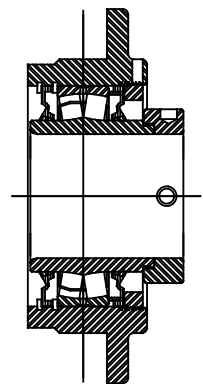
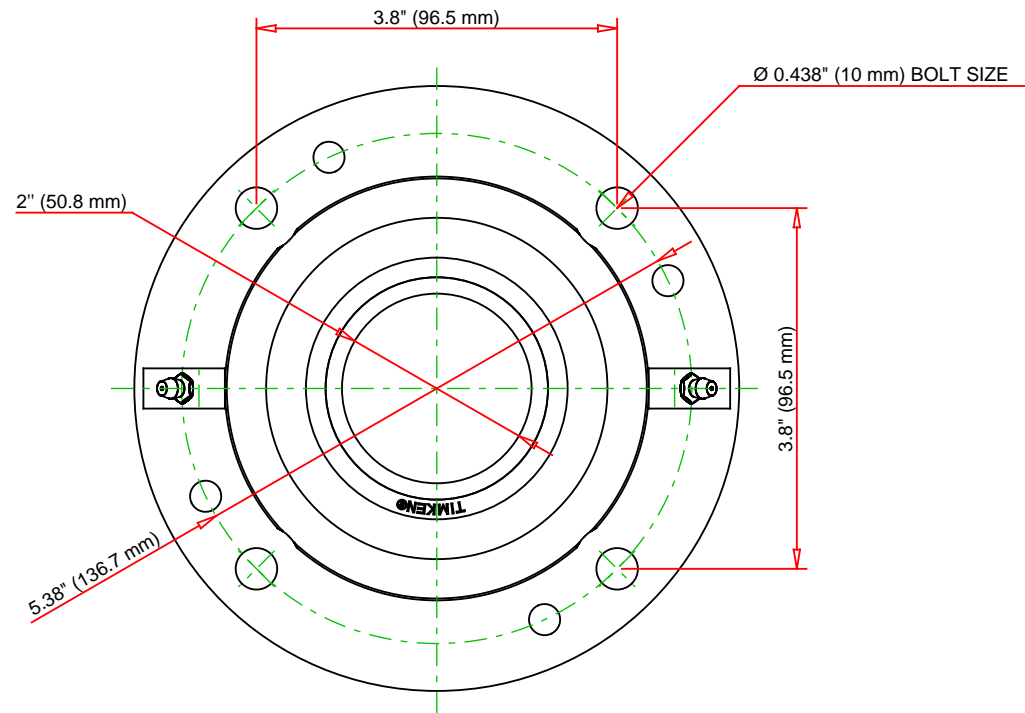
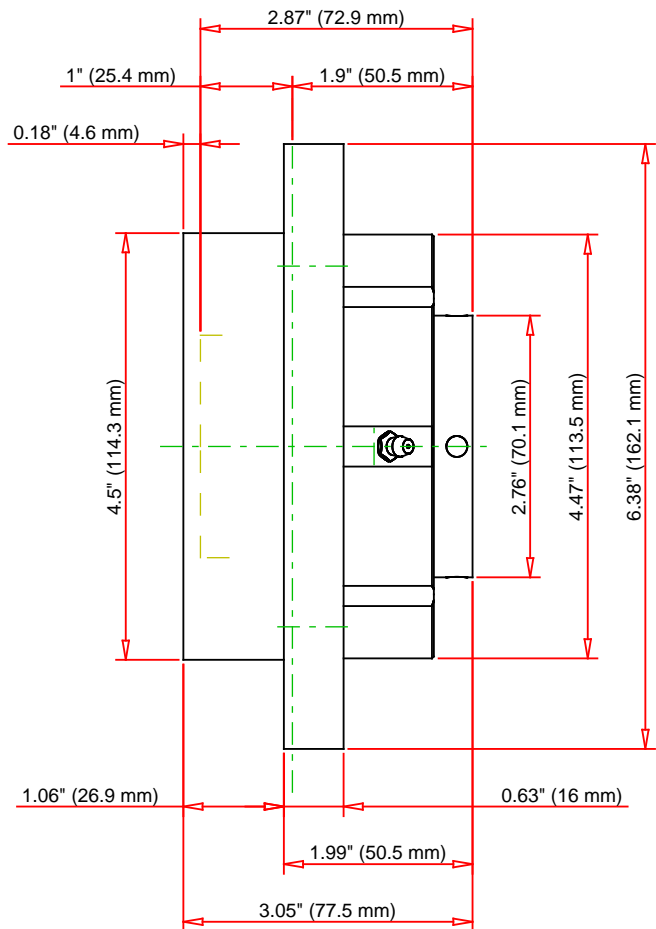
Engineering Internal Radial Clearance

| | |
|--|--------|
| Eng Internal Radial Clearance - Min | 0.0016 |
|--|--------|

| | |
|--|--------|
| Eng Internal Radial Clearance - Max | 0.0026 |
|--|--------|

| | |
|----------------------------------|-----------------------|
| Pre Install Clearance Min | 0.0016 in 0.040 mm |
|----------------------------------|-----------------------|

| | |
|----------------------------------|-----------------------|
| Pre Install Clearance Max | 0.0026 in 0.065 mm |
|----------------------------------|-----------------------|



Note: Section View not to Scale

| | | | | |
|-----------------------------|--------|-----|--------|----|
| C - Dynamic Load | 26300 | lbf | 117000 | N |
| C0 - Static Load | 26600 | lbf | 118000 | N |
| Weight | 10 | lb | 4.5 | kg |
| Max. Speed T-Seals & Grease | 3550 | rpm | | |
| Rad. Clearance - Max. | 0.0026 | | | |

TIMKEN

THE TIMKEN COMPANY
NORTH CANTON, OHIO USA

QMC10J200S
Eccentric Piloted Flange Cartridge

Every reasonable effort has been made to ensure the accuracy of the information contained in this writing, but no liability is accepted for errors, omissions or for any other reason.

FOR DISCUSSION ONLY