



**The Timken Company**

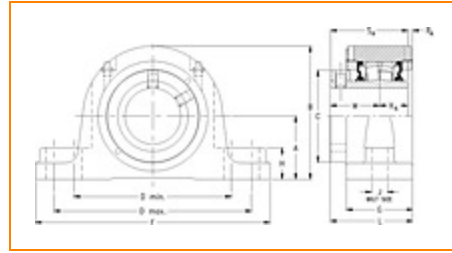
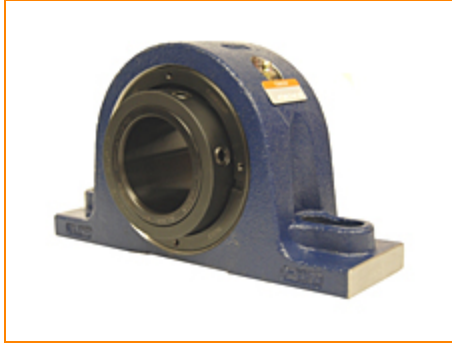
4500 Mt Pleasant St. NW

N. Canton, OH 44720

**Phone:** (234) 262-3000

**E-Mail:** [CustomerCAD@timken.com](mailto:CustomerCAD@timken.com) • **Web site:** [www.timken.com](http://www.timken.com)

## Part Number QAPL18A080S, Single Concentric Two-Bolt Pillow Block



[Specifications](#) | [Dimensions](#) | [Radial and Thrust Factors](#) | [Engineering Seal Speed](#) | [Engineering Bearing Attributes](#) | [Engineering Internal Radial Clearance](#)

### Specifications

**Engineering Group** Mounted Bearing

**Bearing Number** 22218

**Shaft Size** 80 mm

**Shaft Size Type** Metric

**Full Timken Part Number**

- QAPL18A080SB
- QAPL18A080SC
- QAPL18A080SEB
- QAPL18A080SEC
- QAPL18A080SEM
- QAPL18A080SEN
- QAPL18A080SEO
- QAPL18A080SET
- QAPL18A080SM
- QAPL18A080SN
- QAPL18A080SO



QAPL18A080ST

**Locking Style**

Single Concentric

**Housing Construction**

Two-Bolt Pillow Block

**UPC Code**

0883450332644  
 0883450332651  
 0883450332668  
 0883450332675  
 0883450332682  
 0883450332699  
 0883450332705  
 0883450332712  
 0883450332729  
 0883450332736  
 0883450332743  
 0883450332750

**Dimensions****Dimension A**

3-3/4 in  
 95.3 mm

**Dimension B**

7.69 in  
 195.3 mm

**Dimension C**

5.13 in  
 130.3 mm

**Dimension D Min**

9.25 in  
 235 mm

**Dimension D Max**

10.75 in  
 273.1 mm

**Dimension F**

13 in  
 330.2 mm

**Dimension G**

3.41 in  
 86.6 mm

**Dimension H**

1.88 in  
 47.8 mm

<b>Dimension J (Bolt Size)</b>	0.875 in 24 mm
<b>Dimension KA</b>	1.44 in 36.6 mm
<b>Dimension L</b>	4.3 in 109.2 mm
<b>Dimension M</b>	2.59 in 65.8 mm
<b>Dimension RA</b>	0.27 in 6.9 mm
<b>Dimension SA</b>	4.03 in 102.4 mm

### Radial and Thrust Factors

<b>C0 - Static Load</b>	87200 lbf 388000 N
<b>C - Dynamic Load (Basic)</b>	79700 lbf 355000 N
<b>e - Geometry Factor</b>	0.23
<b>Y1 - Geometry Factor</b>	2.90
<b>Y2 - Geometry Factor</b>	4.31

### Engineering Seal Speed

<b>Oil Lubrication - M/N Seal</b>	1400 rpm
<b>Oil Lubrication - T Seal</b>	2400 rpm
<b>Oil Lubrication - B/C/O Seal</b>	1000 rpm
<b>Grease Lubrication - M/N Seal</b>	1400 rpm

<b>Grease Lubrication - T Seal</b>	2000 rpm
------------------------------------	----------

<b>Grease Lubrication - B/C/O Seal</b>	1000 rpm
--	----------

### Engineering Bearing Attributes

<b>Float</b>	0.083 in 2.108 mm
--------------	----------------------

<b>Shaft Tolerance</b>	0.0030 in 0.076 mm
------------------------	-----------------------

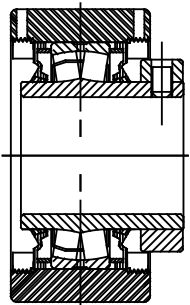
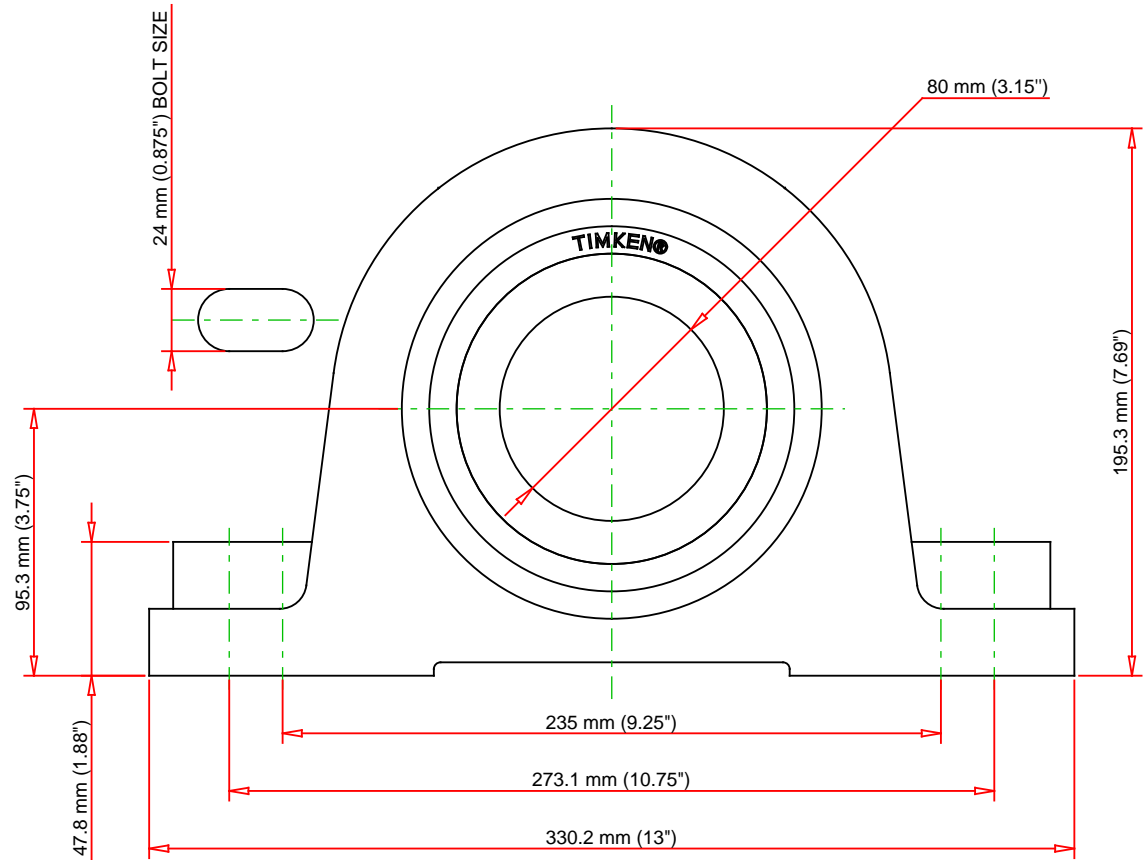
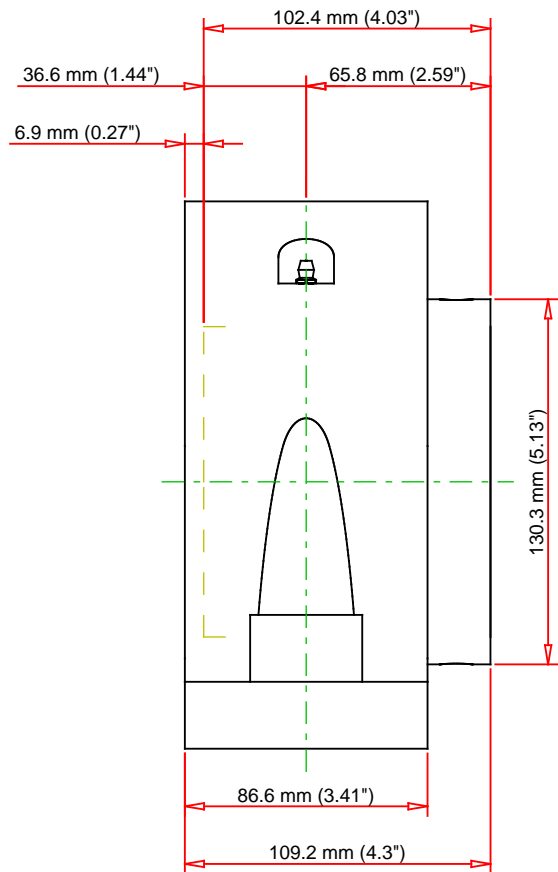
### Engineering Internal Radial Clearance

<b>Eng Internal Radial Clearance - Min</b>	0.0024
--	--------

<b>Eng Internal Radial Clearance - Max</b>	0.0039
--	--------

<b>Pre Install Clearance Min</b>	0.0024 in 0.060 mm
----------------------------------	-----------------------

<b>Pre Install Clearance Max</b>	0.0039 in 0.100 mm
----------------------------------	-----------------------



Note: Section View not to Scale

C - Dynamic Load	79700	lbf	355000	N
C0 - Static Load	87200	lbf	388000	N
Weight	45	lb	20.4	kg
Max. Speed T-Seals & Grease	2000	rpm		
Rad. Clearance - Max.	0.0039			

**TIMKEN**

THE TIMKEN COMPANY  
NORTH CANTON, OHIO USA

**QAPL18A080S**

Single Concentric Two-Bolt Pillow Block

Every reasonable effort has been made to ensure the accuracy of the information contained in this writing, but no liability is accepted for errors, omissions or for any other reason.

**FOR DISCUSSION ONLY**