



The Timken Company

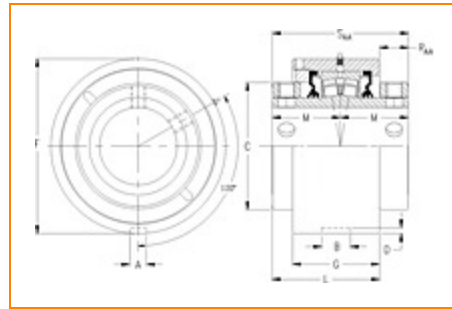
4500 Mt Pleasant St. NW

N. Canton, OH 44720

Phone: (234) 262-3000

E-Mail: CustomerCAD@timken.com • **Web site:** www.timken.com

Part Number QAAMC20A400S, Double Concentric Cartridge Block



[Specifications](#) | [Dimensions](#) | [Radial and Thrust Factors](#) | [Engineering Seal Speed](#) | [Engineering Bearing Attributes](#) | [Engineering Internal Radial Clearance](#)

Specifications

Engineering Group Mounted Bearing

Bearing Number 22220

Shaft Size 4 in

Shaft Size Type Imperial

Full Timken Part Number

- QAAMC20A400SB
- QAAMC20A400SC
- QAAMC20A400SEB
- QAAMC20A400SEC
- QAAMC20A400SEM
- QAAMC20A400SEN
- QAAMC20A400SEO
- QAAMC20A400SET
- QAAMC20A400SM
- QAAMC20A400SN
- QAAMC20A400SO
- QAAMC20A400ST



Locking Style	Double Concentric
----------------------	-------------------

Housing Construction	Cartridge
-----------------------------	-----------

UPC Code	0883450025003
	0883450025010
	0883450025034
	0883450025041
	0883450025058
	0883450025065
	0883450025072
	0883450025089
	0883450194969
	0883450195133
	0883450272131
	0883450272308

Dimensions

Dimension A	0.78 in 19.8 mm
--------------------	--------------------

Dimension B	1.28 in 32.5 mm
--------------------	--------------------

Dimension C	6 in 152.4 mm
--------------------	------------------

Dimension D	0.31 in 7.9 mm
--------------------	-------------------

Dimension F	8.1250 in 206.4 mm
--------------------	-----------------------

Dimension G	4.14 in 105.2 mm
--------------------	---------------------

Dimension L Exp	5.13 in 130.3 mm
------------------------	---------------------

Dimension L Fix	5.05 in 128.3 mm
------------------------	---------------------

Dimension M	2.97 in 75.4 mm
Dimension RAA	0.89 in 22.6 mm
Dimension SAA	5.94 in 150.9 mm

Radial and Thrust Factors

C0 - Static Load	113000 lbf 502000 N
C - Dynamic Load (Basic)	97700 lbf 435000 N
e - Geometry Factor	0.24
Y1 - Geometry Factor	2.85
Y2 - Geometry Factor	4.24

Engineering Seal Speed

Oil Lubrication - M/N Seal	1200 rpm
Oil Lubrication - T Seal	2000 rpm
Oil Lubrication - B/C/O Seal	900 rpm
Grease Lubrication - M/N Seal	1200 rpm
Grease Lubrication - T Seal	1600 rpm
Grease Lubrication - B/C/O Seal	900 rpm

Engineering Bearing Attributes

Float	0.083 in 2.108 mm
--------------	----------------------

Shaft Tolerance	0.0030 in 0.076 mm
------------------------	-----------------------

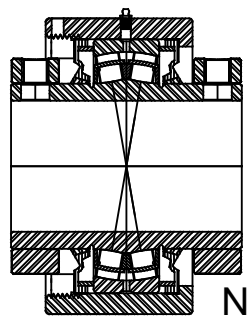
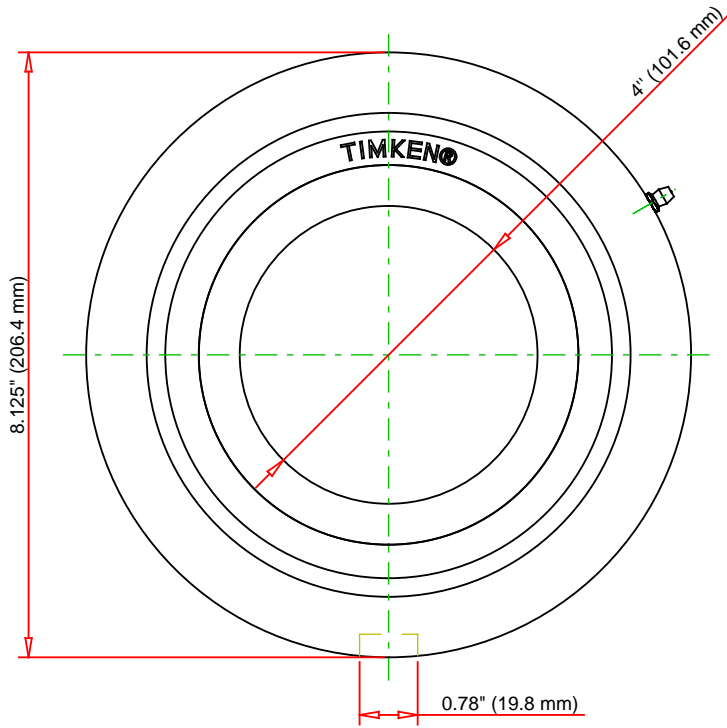
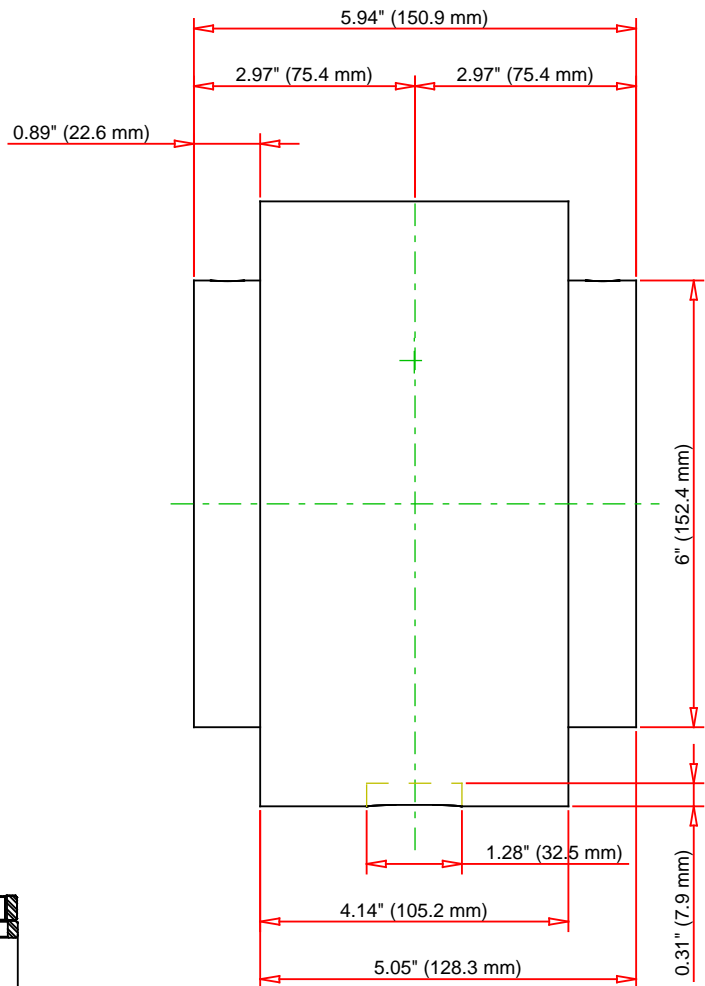
Engineering Internal Radial Clearance

Eng Internal Radial Clearance - Min	0.0030
--	--------

Eng Internal Radial Clearance - Max	0.0047
--	--------

Pre Install Clearance Min	0.0030 in 0.075 mm
----------------------------------	-----------------------

Pre Install Clearance Max	0.0047 in 0.120 mm
----------------------------------	-----------------------



Note: Section View not to Scale

C - Dynamic Load	97700	lbf	435000	N
C0 - Static Load	113000	lbf	502000	N
Weight	32	lb	14.5	kg
Max. Speed T-Seals & Grease	1600	rpm		
Rad. Clearance - Max.	0.0047			

TIMKEN
THE TIMKEN COMPANY
NORTH CANTON, OHIO USA

QAAMC20A400S
Double Concentric Cartridge Block

Every reasonable effort has been made to ensure the accuracy of the information contained in this writing, but no liability is accepted for errors, omissions or for any other reason.

FOR DISCUSSION ONLY