


The Timken Company

4500 Mt Pleasant St. NW

N. Canton, OH 44720

Phone: (234) 262-3000

E-Mail: CustomerCAD@timken.com • **Web site:** www.timken.com

Part Number QAC11A204S, Single Concentric Piloted Flange Cartridge



[Specifications](#) | [Dimensions](#) | [Radial and Thrust Factors](#) | [Engineering Seal Speed](#) | [Engineering Bearing Attributes](#) | [Engineering Internal Radial Clearance](#)

Specifications

Engineering Group Mounted Bearing

Bearing Number 22211

Shaft Size 2 1/4 in

Shaft Size Type Imperial

Full Timken Part Number

- QAC11A204SB
- QAC11A204SC
- QAC11A204SEB
- QAC11A204SEC
- QAC11A204SEM
- QAC11A204SEN
- QAC11A204SEO
- QAC11A204SET
- QAC11A204SM
- QAC11A204SN
- QAC11A204SO
- QAC11A204ST



Locking Style	Single Concentric
----------------------	-------------------

Housing Construction	Piloted Flange Cartridge
-----------------------------	--------------------------

UPC Code	0883450035002
	0883450035019
	0883450035033
	0883450035040
	0883450035057
	0883450035064
	0883450035071
	0883450035088
	0883450193177
	0883450193337
0883450270366	
0883450270526	

Dimensions

Dimension BC	6 in 152.4 mm
---------------------	------------------

Dimension B Exp	2.19 in 55.6 mm
------------------------	--------------------

Dimension B Fix	2.14 in 54.4 mm
------------------------	--------------------

Dimension C	3.25 in 82.6 mm
--------------------	--------------------

Dimension D	5 in 127 mm
--------------------	----------------

Dimension E	4.24 in 107.7 mm
--------------------	---------------------

Dimension F	7.3 in 185.4 mm
--------------------	--------------------

Dimension G	5 in 127 mm
--------------------	----------------

Dimension H	0.58 in 14.7 mm
Dimension J (Bolt Size)	0.5 in 12 mm
Dimension KA	1.13 in 28.7 mm
Dimension L Exp	3.32 in 84.3 mm
Dimension L Fix	3.27 in 83.1 mm
Dimension M	2 in 50.8 mm
Dimension N	1.13 in 28.7 mm
Dimension RA	0.14 in 3.6 mm
Dimension SA	3.13 in 79.5 mm

Radial and Thrust Factors

C0 - Static Load	31900 lbf 142000 N
C - Dynamic Load (Basic)	31400 lbf 140000 N
e - Geometry Factor	0.23
Y1 - Geometry Factor	2.95
Y2 - Geometry Factor	4.40

Engineering Seal Speed

Oil Lubrication - M/N Seal	2200 rpm
-----------------------------------	----------

Oil Lubrication - T Seal	3800 rpm
---------------------------------	----------

Oil Lubrication - B/C/O Seal	1600 rpm
-------------------------------------	----------

Grease Lubrication - M/N Seal	2200 rpm
--------------------------------------	----------

Grease Lubrication - T Seal	3200 rpm
------------------------------------	----------

Grease Lubrication - B/C/O Seal	1600 rpm
--	----------

Engineering Bearing Attributes

Float	0.050 in 1.270 mm
--------------	----------------------

Shaft Tolerance	0.0015 in 0.038 mm
------------------------	-----------------------

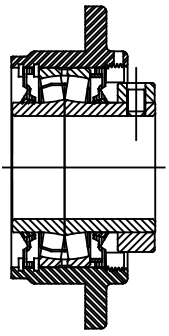
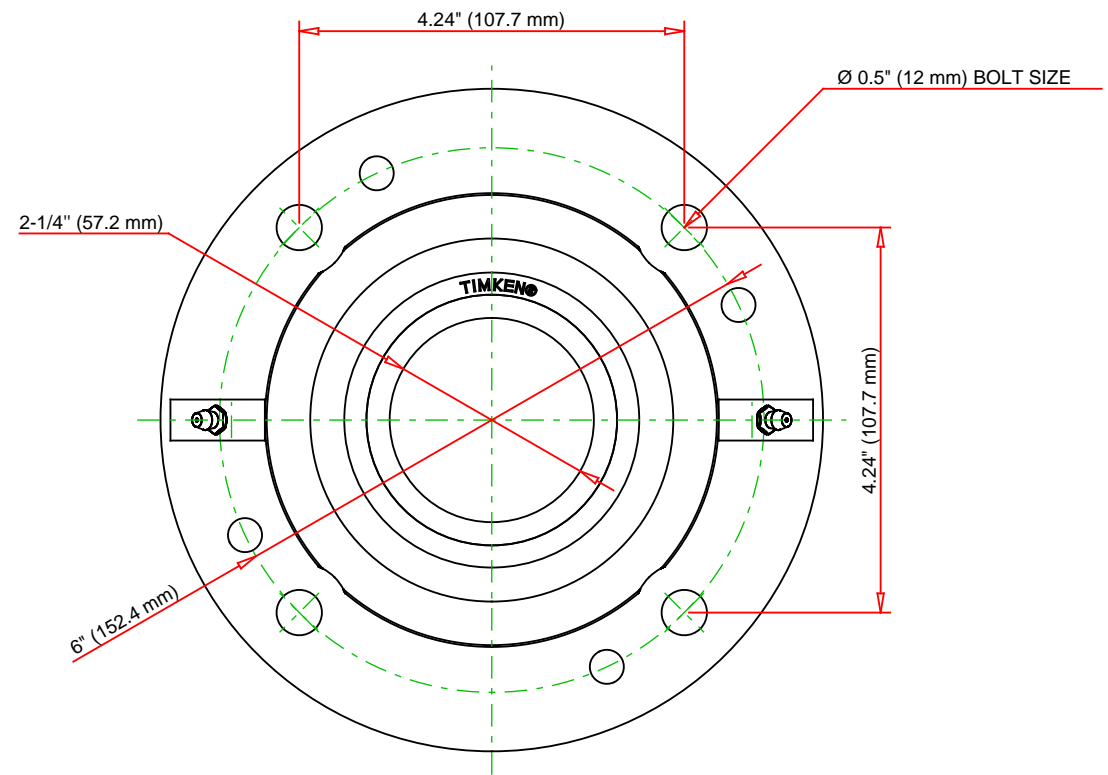
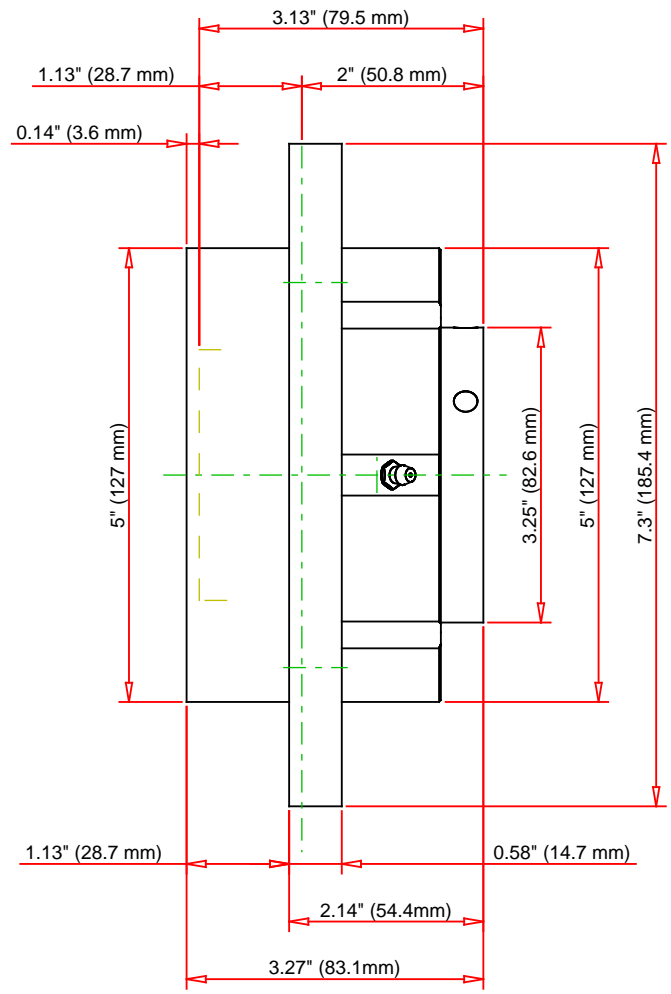
Engineering Internal Radial Clearance

Eng Internal Radial Clearance - Min	0.0016
--	--------

Eng Internal Radial Clearance - Max	0.0026
--	--------

Pre Install Clearance Min	0.0016 in 0.040 mm
----------------------------------	-----------------------

Pre Install Clearance Max	0.0026 in 0.065 mm
----------------------------------	-----------------------



Note: Section View not to Scale

C - Dynamic Load	31400	lbf	140000	N
C0 - Static Load	31900	lbf	142000	N
Weight	13	lb	5.9	kg
Max. Speed T-Seals & Grease	3200	rpm		
Rad. Clearance - Max.	0.0026			

TIMKEN
 THE TIMKEN COMPANY
 NORTH CANTON, OHIO USA

QAC11A204S
 Single Concentric Piloted Flange
 Cartridge

Every reasonable effort has been made to ensure the accuracy of the information contained in this writing, but no liability is accepted for errors, omissions or for any other reason.

FOR DISCUSSION ONLY