

**TIMKEN****The Timken Company**

4500 Mt Pleasant St. NW

N. Canton, OH 44720

**Phone:** (234) 262-3000**E-Mail:** [CustomerCAD@timken.com](mailto:CustomerCAD@timken.com) • **Web site:** [www.timken.com](http://www.timken.com)**Part Number QAACW11A203S, Double Concentric Piloted Flange Cartridge**

[Specifications](#) | [Dimensions](#) | [Radial and Thrust Factors](#) | [Engineering Seal Speed](#) | [Engineering Bearing Attributes](#) | [Engineering Internal Radial Clearance](#)

**Specifications****Engineering Group** Mounted Bearing**Bearing Number** 22211**Shaft Size** 2 3/16 in**Shaft Size Type** Imperial

**Full Timken Part Number**

QAACW11A203SB  
 QAACW11A203SC  
 QAACW11A203SEB  
 QAACW11A203SEC  
 QAACW11A203SEM  
 QAACW11A203SEN  
 QAACW11A203SEO  
 QAACW11A203SET  
 QAACW11A203SM  
 QAACW11A203SN  
 QAACW11A203SO



QAACW11A203ST

**Locking Style** Double Concentric

**Housing Construction** Piloted Flange Cartridge

**UPC Code**

0883450016902  
0883450016919  
0883450016933  
0883450016940  
0883450016957  
0883450016964  
0883450016971  
0883450016988  
0883450194167  
0883450194341  
0883450271332  
0883450271516

## Dimensions

**Dimension BC** 6 in  
152.4 mm

**Dimension C** 3.25 in  
82.6 mm

**Dimension D** 4.99 in  
126.7 mm

**Dimension E** 4.24 in  
107.7 mm

**Dimension B Exp** 1.85 in  
47 mm

**Dimension B Fix** 1.8 in  
45.7 mm

**Dimension F** 7.13 in  
181.1 mm

**Dimension H** 0.56 in  
14.2 mm

<b>Dimension J (Bolt Size)</b>	0.5 in 12 mm
<b>Dimension M</b>	2 in 50.8 mm
<b>Dimension L Exp</b>	3.47 in 88.1 mm
<b>Dimension L Fix</b>	3.42 in 86.9 mm
<b>Dimension RAA</b>	0.58 in 14.7 mm
<b>Dimension SAA</b>	4 in 101.6 mm
<b>Dimension G</b>	5 in 127 mm
<b>Dimension N</b>	1.63 in 41.4 mm

## Radial and Thrust Factors

<b>C0 - Static Load</b>	31900 lbf 142000 N
<b>C - Dynamic Load (Basic)</b>	31400 lbf 140000 N
<b>e - Geometry Factor</b>	0.23
<b>Y1 - Geometry Factor</b>	2.95
<b>Y2 - Geometry Factor</b>	4.40

## Engineering Seal Speed

<b>Oil Lubrication - M/N Seal</b>	2200 rpm
-----------------------------------	----------

<b>Oil Lubrication - T Seal</b>	3800 rpm
---------------------------------	----------

<b>Oil Lubrication - B/C/O Seal</b>	1600 rpm
-------------------------------------	----------

<b>Grease Lubrication - M/N Seal</b>	2200 rpm
--------------------------------------	----------

<b>Grease Lubrication - T Seal</b>	3200 rpm
------------------------------------	----------

<b>Grease Lubrication - B/C/O Seal</b>	1600 rpm
--	----------

### Engineering Bearing Attributes

<b>Float</b>	0.050 in 1.270 mm
--------------	----------------------

<b>Shaft Tolerance</b>	0.0015 in 0.038 mm
------------------------	-----------------------

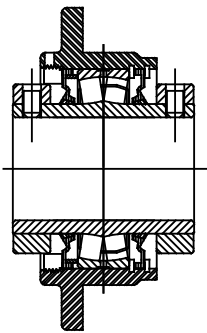
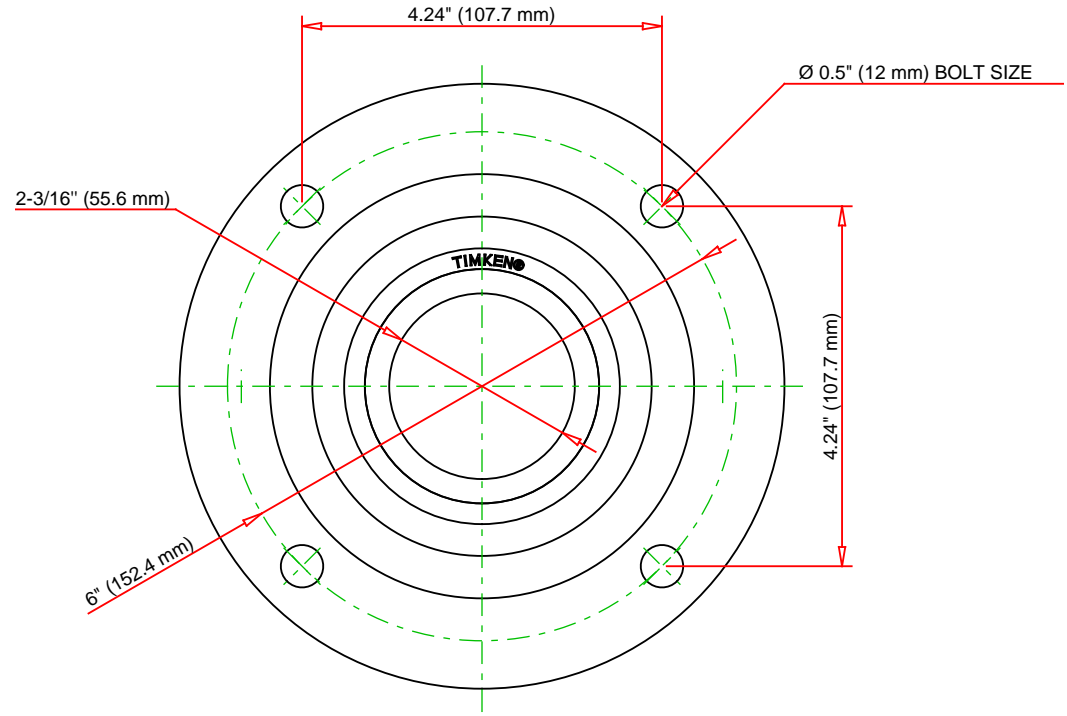
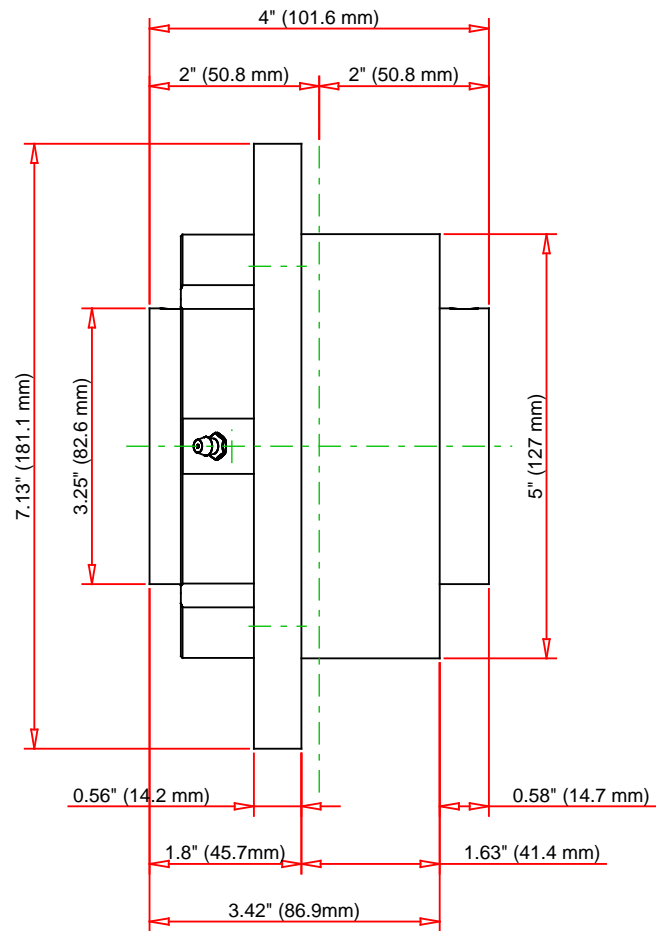
### Engineering Internal Radial Clearance

<b>Eng Internal Radial Clearance - Min</b>	0.0016
--	--------

<b>Eng Internal Radial Clearance - Max</b>	0.0026
--	--------

<b>Pre Install Clearance Min</b>	0.040 in 0.0016 mm
----------------------------------	-----------------------

<b>Pre Install Clearance Max</b>	0.065 in 0.0026 mm
----------------------------------	-----------------------



Note: Section View not to Scale

C - Dynamic Load	31400	lbf	140000	N
C0 - Static Load	31900	lbf	142000	N
Weight	13	lb	5.9	kg
Max. Speed T-Seals & Grease	3200	rpm		
Rad. Clearance - Max.	0.0026			

**TIMKEN**

THE TIMKEN COMPANY  
NORTH CANTON, OHIO USA

**QAACW11A203S**

Double Concentric Piloted Flange  
Cartridge

Every reasonable effort has been made to ensure the accuracy of the information contained in this writing, but no liability is accepted for errors, omissions or for any other reason.

**FOR DISCUSSION ONLY**