


The Timken Company

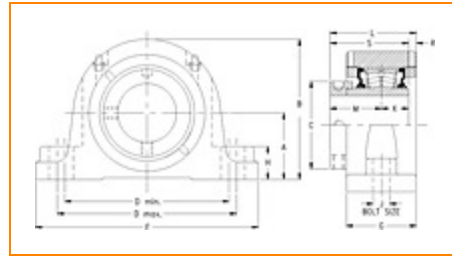
4500 Mt Pleasant St. NW

N. Canton, OH 44720

Phone: (234) 262-3000

E-Mail: CustomerCAD@timken.com • **Web site:** www.timken.com

Part Number QMSN09J040S, Eccentric Two-Bolt Pillow Block



[Specifications](#) | [Dimensions](#) | [Radial and Thrust Factors](#) | [Engineering Seal Speed](#) | [Engineering Bearing Attributes](#) | [Engineering Internal Radial Clearance](#)

Specifications

Engineering Group Mounted Bearing

Bearing Number 22209

Shaft Size 40 mm

Shaft Size Type Metric

Full Timken Part Number

- QMSN09J040SB
- QMSN09J040SC
- QMSN09J040SEB
- QMSN09J040SEC
- QMSN09J040SEM
- QMSN09J040SEN
- QMSN09J040SEO
- QMSN09J040SET
- QMSN09J040SM
- QMSN09J040SN
- QMSN09J040SO
- QMSN09J040ST



Locking Style	Eccentric
Housing Construction	Two-Bolt Pillow Block
UPC Code	0883450096027 0883450096034 0883450096058 0883450096065 0883450096072 0883450096089 0883450096096 0883450096102 0883450160803 0883450161169 0883450253468 0883450253857

Dimensions

Dimension A	2.36 in 60 mm
Dimension B	4.37 in 111 mm
Dimension C	2.64 in 67 mm
Dimension D Min	6.26 in 159 mm
Dimension D Max	6.89 in 175 mm
Dimension F	8.07 in 205 mm
Dimension G	2.44 in 62 mm
Dimension H	1.38 in 35 mm

Dimension J (Bolt Size)	0.5 in 12 mm
Dimension K	0.98 in 25 mm
Dimension L	3.11 in 79 mm
Dimension M	1.89 in 48 mm
Dimension R	0.24 in 6 mm
Dimension S	2.87 in 73 mm

Radial and Thrust Factors

C0 - Static Load	24200 lbf 108000 N
C - Dynamic Load (Basic)	24500 lbf 109000 N
e - Geometry Factor	0.26
Y1 - Geometry Factor	2.64
Y2 - Geometry Factor	3.93

Engineering Seal Speed

Oil Lubrication - M/N Seal	2700 rpm
Oil Lubrication - T Seal	4500 rpm
Oil Lubrication - B/C/O Seal	1950 rpm
Grease Lubrication - M/N Seal	2700 rpm

Grease Lubrication - T Seal	4000 rpm
------------------------------------	----------

Grease Lubrication - B/C/O Seal	1950 rpm
--	----------

Engineering Bearing Attributes

Float	0.050 in 1.270 mm
--------------	----------------------

Shaft Tolerance	0.0015 in 0.038 mm
------------------------	-----------------------

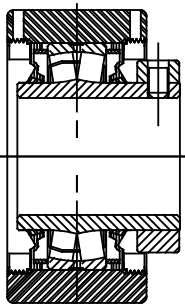
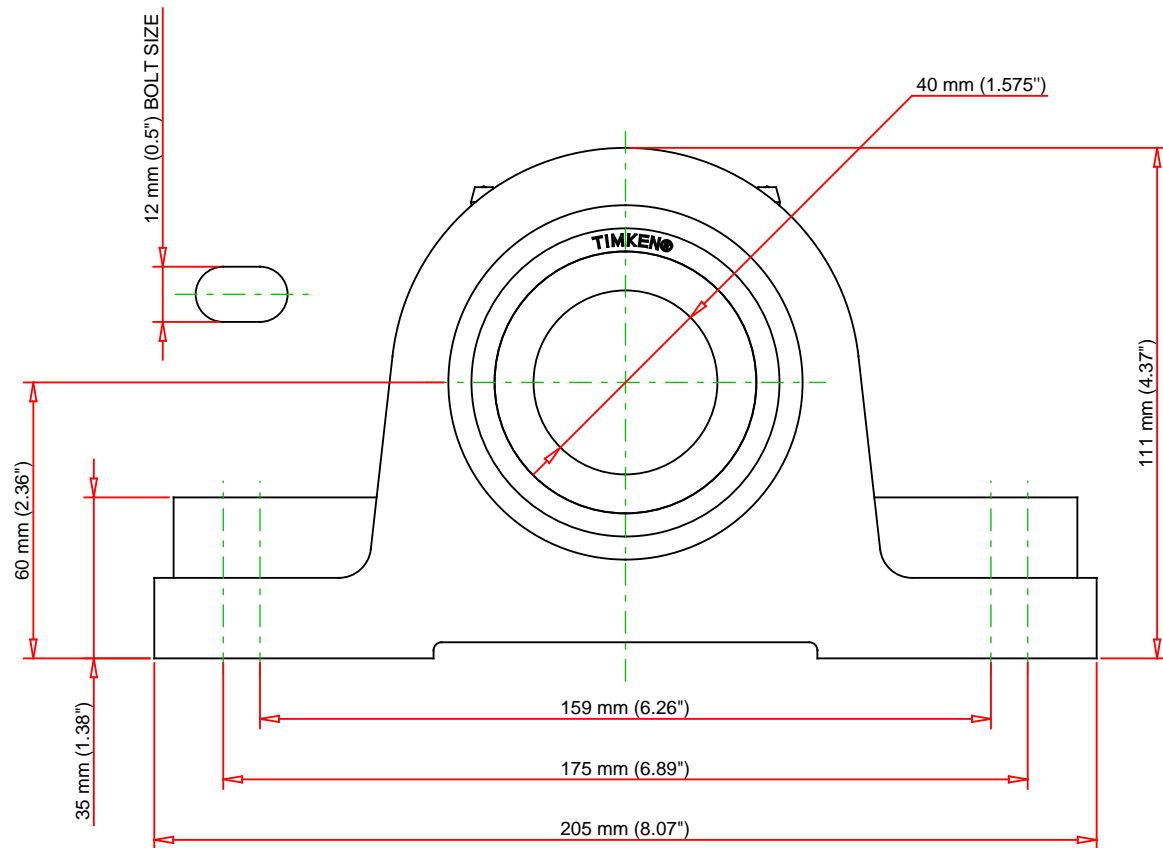
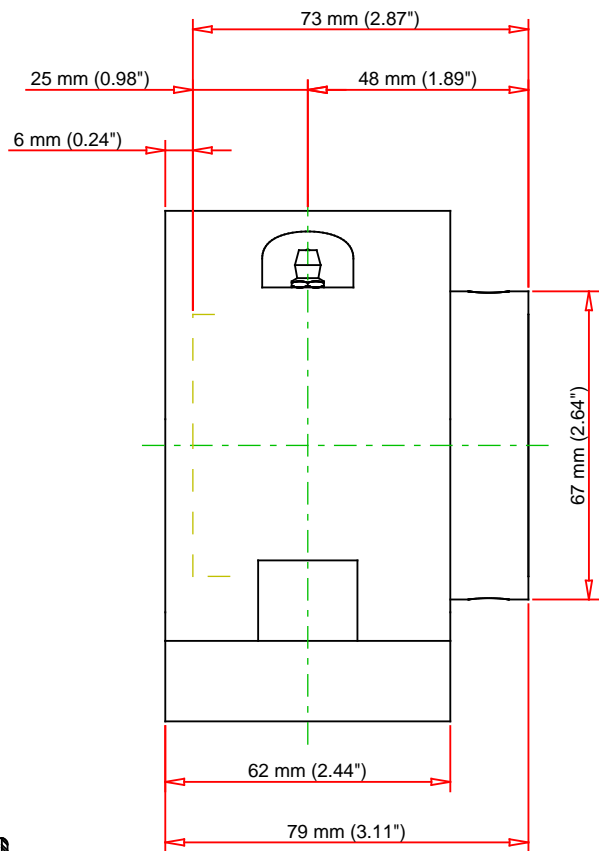
Engineering Internal Radial Clearance

Eng Internal Radial Clearance - Min	0.0014
--	--------

Eng Internal Radial Clearance - Max	0.0022
--	--------

Pre Install Clearance Min	0.0014 in 0.035 mm
----------------------------------	-----------------------

Pre Install Clearance Max	0.0022 in 0.055 mm
----------------------------------	-----------------------



Note: Section View not to Scale

C - Dynamic Load	24500	lbf	109000	N
C0 - Static Load	24200	lbf	108000	N
Weight	23	lb	10.5	kg
Max. Speed T-Seals & Grease	4000	rpm		
Rad. Clearance - Max.	0.0022			

TIMKEN

THE TIMKEN COMPANY
NORTH CANTON, OHIO USA

QMSN09J040S
Eccentric Two-Bolt Pillow Block

Every reasonable effort has been made to ensure the accuracy of the information contained in this writing, but no liability is accepted for errors, omissions or for any other reason.

FOR DISCUSSION ONLY