



The Timken Company

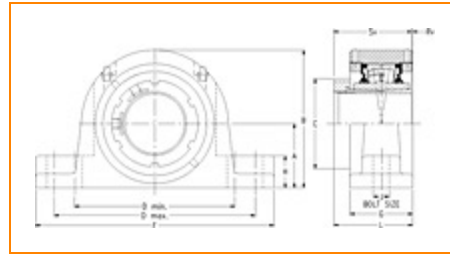
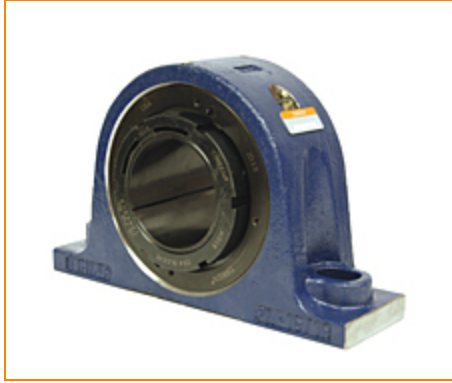
4500 Mt Pleasant St. NW

N. Canton, OH 44720

Phone: (234) 262-3000

E-Mail: CustomerCAD@timken.com • **Web site:** www.timken.com

Part Number QVPN17V215S, Single V-Lock Two-Bolt Pillow Block



[Specifications](#) | [Dimensions](#) | [Radial and Thrust Factors](#) | [Engineering Seal Speed](#) | [Engineering Bearing Attributes](#) | [Engineering Internal Radial Clearance](#)

Specifications

Engineering Group Mounted Bearing

Bearing Number 22217

Shaft Size 2 15/16 in

Shaft Size Type Imperial

Full Timken Part Number

- QVPN17V215SB
- QVPN17V215SC
- QVPN17V215SEB
- QVPN17V215SEC
- QVPN17V215SEM
- QVPN17V215SEN
- QVPN17V215SEO
- QVPN17V215SET
- QVPN17V215SM
- QVPN17V215SN
- QVPN17V215SO
- QVPN17V215ST



Locking Style	Single V-Lock
Housing Construction	Two-Bolt Pillow Block
UPC Code	0883450057868 0883450057967 0883450205771 0883450205917 0883450218191 0883450218344 0883450230612 0883450230766 0883450239356 0883450239509 0883450244312 0883450244466

Dimensions

Dimension A	3-3/4 in 95.3 mm
Dimension B	7.32 in 185.9 mm
Dimension C	4.29 in 109 mm
Dimension D Min	9.5 in 241.3 mm
Dimension D Max	11 in 279.4 mm
Dimension F	12.63 in 320.8 mm
Dimension G	3 in 76.2 mm
Dimension H	1.33 in 34 mm

Dimension J (Bolt Size)	0.75 in 20 mm
Dimension L	3.61 in 91.7 mm
Dimension RV	0.28 in 7.1 mm
Dimension SV	3.33 in 84.6 mm

Radial and Thrust Factors

C0 - Static Load	71900 lbf 320000 N
C - Dynamic Load (Basic)	66900 lbf 297000 N
e - Geometry Factor	0.22
Y1 - Geometry Factor	3.07
Y2 - Geometry Factor	4.57

Engineering Seal Speed

Oil Lubrication - M/N Seal	1400 rpm
Oil Lubrication - T Seal	2400 rpm
Oil Lubrication - B/C/O Seal	1100 rpm
Grease Lubrication - M/N Seal	1400 rpm
Grease Lubrication - T Seal	2000 rpm
Grease Lubrication - B/C/O Seal	1100 rpm

Engineering Bearing Attributes

Float	0.083 in 2.108 mm
--------------	----------------------

Shaft Tolerance	0.0020 in 0.051 mm
------------------------	-----------------------

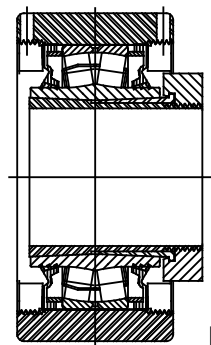
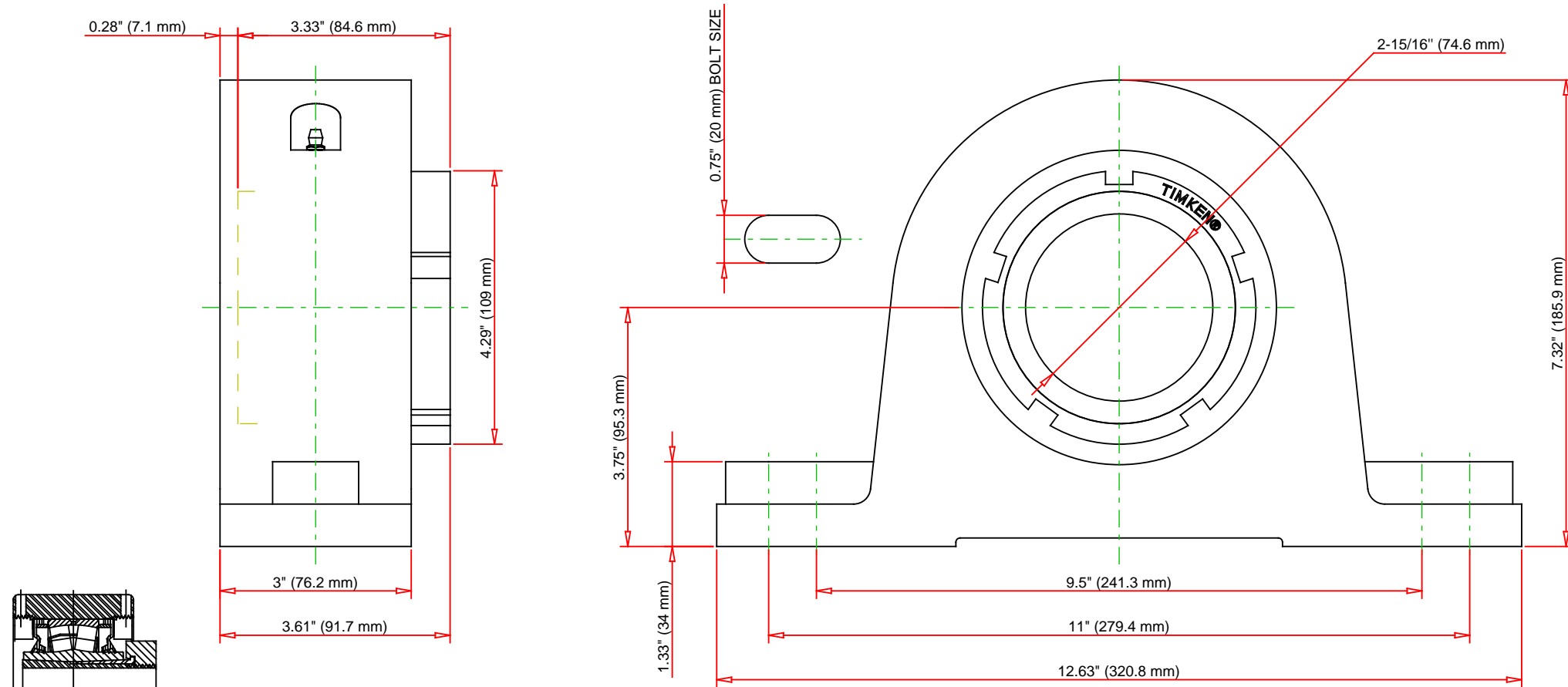
Engineering Internal Radial Clearance

Eng Internal Radial Clearance - Min	0.0037
--	--------

Eng Internal Radial Clearance - Max	0.0047
--	--------

Pre Install Clearance Min	0.0037 in 0.095 mm
----------------------------------	-----------------------

Pre Install Clearance Max	0.0047 in 0.120 mm
----------------------------------	-----------------------



Note: Section View not to Scale

C - Dynamic Load	66900	lbf	297000	N
C0 - Static Load	71900	lbf	320000	N
Weight	33	lb	13.6	kg
Max. Speed T-Seals & Grease	2000	rpm		
Rad. Clearance - Max.	0.0047			

TIMKEN

THE TIMKEN COMPANY
NORTH CANTON, OHIO USA

QVPN17V215S
Single V-Lock Two-Bolt Pillow Block

Every reasonable effort has been made to ensure the accuracy of the information contained in this writing, but no liability is accepted for errors, omissions or for any other reason.

FOR DISCUSSION ONLY