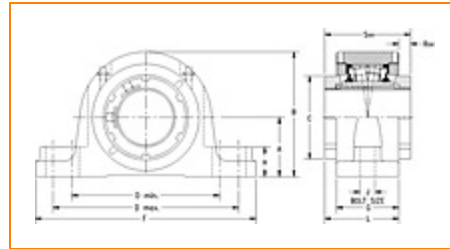
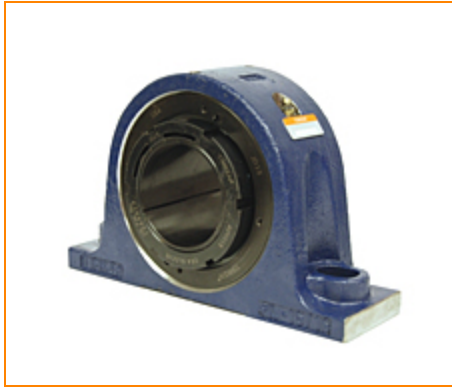



The Timken Company

4500 Mt Pleasant St. NW

N. Canton, OH 44720

Phone: (234) 262-3000

E-Mail: CustomerCAD@timken.com • **Web site:** www.timken.com
Part Number QVVPL14V207S, Double V-Lock Two-Bolt Pillow Block


[Specifications](#) | [Dimensions](#) | [Radial and Thrust Factors](#) | [Engineering Seal Speed](#) | [Engineering Bearing Attributes](#) | [Engineering Internal Radial Clearance](#)

Specifications

Engineering Group Mounted Bearing

Bearing Number 22214

Shaft Size 2 7/16 in

Shaft Size Type Imperial

Full Timken Part Number

- QVVPL14V207SB
- QVVPL14V207SC
- QVVPL14V207SEB
- QVVPL14V207SEC
- QVVPL14V207SEM
- QVVPL14V207SEN
- QVVPL14V207SEO
- QVVPL14V207SET
- QVVPL14V207SM
- QVVPL14V207SN



QVWPL14V207SO
 QVWPL14V207ST
 QVWPL14V207STHT

Locking Style Double V-Lock

Housing Construction Two-Bolt Pillow Block

UPC Code

0883450172240
 0883450172431
 0883450172622
 0883450173001
 0883450173193
 0883450173384
 0883450203012
 0883450203395
 0883450215435
 0883450215817
 0883450227858
 0883450228237
 0883450457996

Dimensions

Dimension A

2.75 in
 69.9 mm

Dimension B

5.8 in
 147.3 mm

Dimension C

3.7 in
 94 mm

Dimension D Min

6.81 in
 173 mm

Dimension D Max

7.44 in
 189 mm

Dimension F

9 1/4 in
 235 mm

Dimension G

2.9 in
 73.7 mm

Dimension H	1.38 in 35.1 mm
Dimension J (Bolt Size)	0.625 in 16 mm
Dimension L	3.5 in 88.9 mm
Dimension RVV	0.6 in 15.2 mm
Dimension SVV	4.09 in 103.9 mm

Radial and Thrust Factors

C0 - Static Load	52000 lbf 231000 N
C - Dynamic Load (Basic)	47800 lbf 213000 N
e - Geometry Factor	0.23
Y1 - Geometry Factor	2.90
Y2 - Geometry Factor	4.32

Engineering Seal Speed

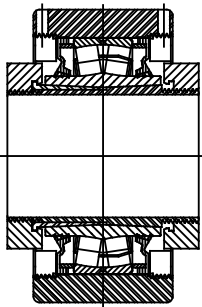
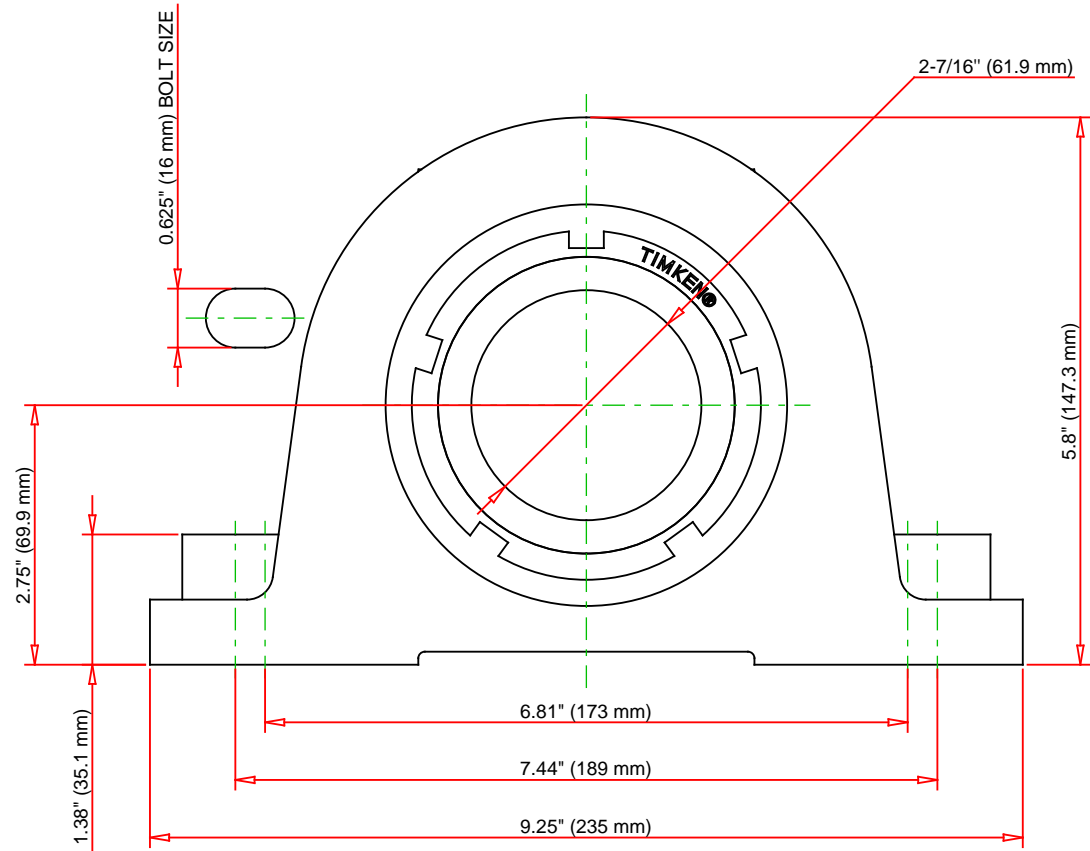
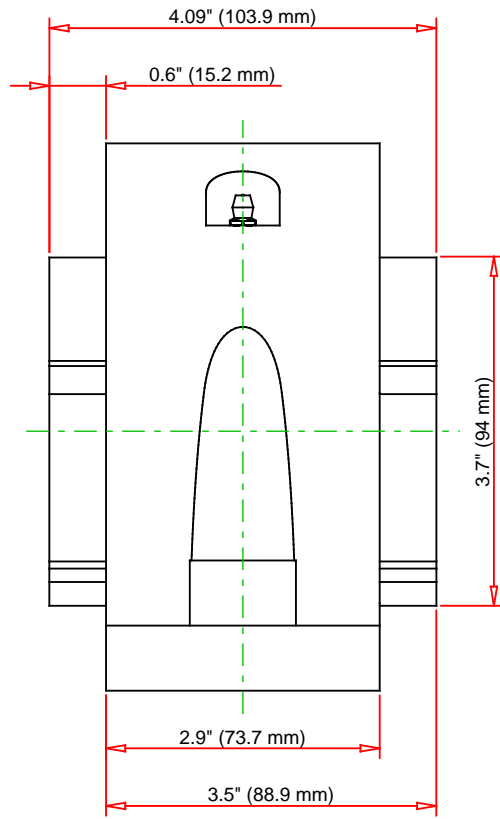
Oil Lubrication - M/N Seal	1700 rpm
Oil Lubrication - T Seal	3050 rpm
Oil Lubrication - B/C/O Seal	1400 rpm
Grease Lubrication - M/N Seal	1700 rpm
Grease Lubrication - T Seal	2600 rpm
Grease Lubrication - B/C/O Seal	1400 rpm

Engineering Bearing Attributes

Float	0.083 in 2.108 mm
Shaft Tolerance	0.0015 in 0.038 mm

Engineering Internal Radial Clearance

Eng Internal Radial Clearance - Min	0.0030
Eng Internal Radial Clearance - Max	0.0037
Pre Install Clearance Min	0.0030 in 0.075 mm
Pre Install Clearance Max	0.0037 in 0.094 mm



Note: Section View not to Scale

C - Dynamic Load	47800	lbf	213000	N
C0 - Static Load	52000	lbf	231000	N
Weight	22	lb	10	kg
Max. Speed T-Seals & Grease	2600	rpm		
Rad. Clearance - Max.	0.0037			

TIMKEN

THE TIMKEN COMPANY
NORTH CANTON, OHIO USA

QVVPL14V207S

Double V-Lock Two-Bolt Pillow Block

Every reasonable effort has been made to ensure the accuracy of the information contained in this writing, but no liability is accepted for errors, omissions or for any other reason.

FOR DISCUSSION ONLY