



**The Timken Company**

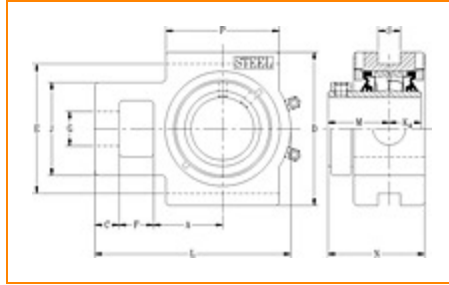
4500 Mt Pleasant St. NW

N. Canton, OH 44720

**Phone:** (234) 262-3000

**E-Mail:** [CustomerCAD@timken.com](mailto:CustomerCAD@timken.com) • **Web site:** [www.timken.com](http://www.timken.com)

Part Number QATU18A308S, Single Concentric Take-Up Block



[Specifications](#) | [Dimensions](#) | [Radial and Thrust Factors](#) | [Engineering Seal Speed](#) | [Engineering Bearing Attributes](#) | [Engineering Internal Radial Clearance](#)

Specifications

<b>Engineering Group</b>	Mounted Bearing
<b>Bearing Number</b>	22218
<b>Shaft Size</b>	3 1/2 in
<b>Shaft Size Type</b>	Imperial
<b>Full Timken Part Number</b>	QATU18A308SB QATU18A308SC QATU18A308SEB QATU18A308SEC QATU18A308SEM QATU18A308SEN QATU18A308SEO QATU18A308SET QATU18A308SM QATU18A308SN QATU18A308SO



QATU18A308ST

<b>Locking Style</b>	Single Concentric
<b>Housing Construction</b>	Take-Up
<b>UPC Code</b>	0883450050906 0883450050913 0883450050937 0883450050944 0883450050951 0883450050968 0883450050975 0883450050982 0883450195270 0883450195430 0883450272452 0883450272629

## Dimensions

<b>Dimension A1</b>	3.63 in 92.2 mm
<b>Dimension C</b>	1 in 25.4 mm
<b>Dimension D</b>	7.63 in 193.8 mm
<b>Dimension E</b>	6.81 in 173 mm
<b>Dimension F</b>	1.81 in 46 mm
<b>Dimension G</b>	1.88 in 47.8 mm
<b>Dimension J</b>	4.88 in 124 mm
<b>Dimension L</b>	10.12 in 257 mm

<b>Dimension KA</b>	1.44 in 36.6 mm
<b>Dimension M</b>	2.59 in 65.8 mm
<b>Dimension N</b>	4.22 in 107.2 mm
<b>Dimension P</b>	6.25 in 158.8 mm
<b>Dimension S</b>	1.81 in 46 mm

### Radial and Thrust Factors

<b>C0 - Static Load</b>	87200 lbf 388000 N
<b>C - Dynamic Load (Basic)</b>	79700 lbf 355000 N
<b>e - Geometry Factor</b>	0.23
<b>Y1 - Geometry Factor</b>	2.90
<b>Y2 - Geometry Factor</b>	4.31

### Engineering Seal Speed

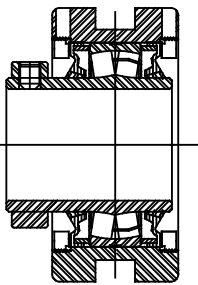
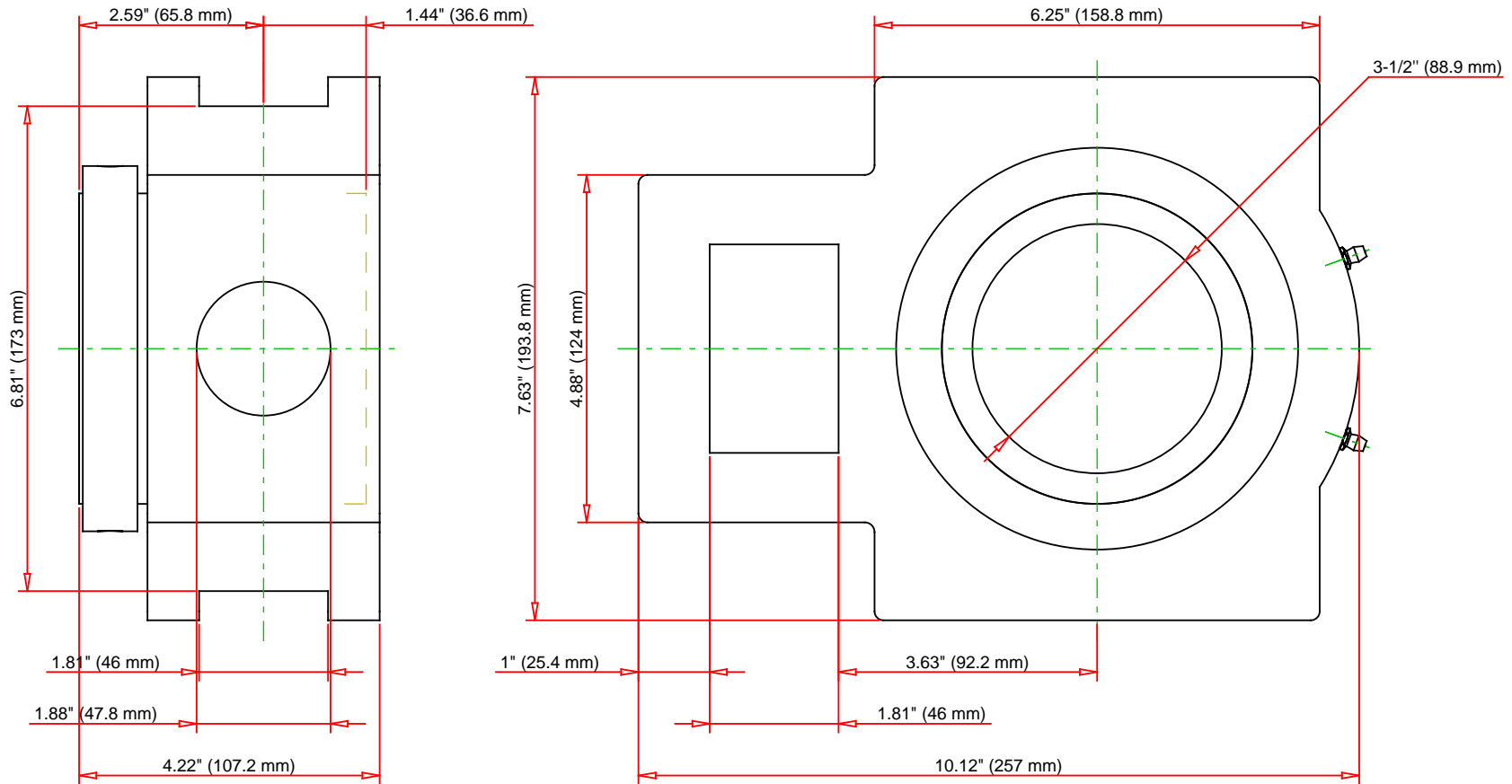
<b>Oil Lubrication - M/N Seal</b>	1400 rpm
<b>Oil Lubrication - T Seal</b>	2400 rpm
<b>Oil Lubrication - B/C/O Seal</b>	1000 rpm
<b>Grease Lubrication - M/N Seal</b>	1400 rpm
<b>Grease Lubrication - T Seal</b>	2000 rpm
<b>Grease Lubrication - B/C/O Seal</b>	1000 rpm

## Engineering Bearing Attributes

<b>Float</b>	0.08 in 2.03 mm
<b>Shaft Tolerance</b>	0.0030 in 0.076 mm

## Engineering Internal Radial Clearance

<b>Eng Internal Radial Clearance - Min</b>	0.0024
<b>Eng Internal Radial Clearance - Max</b>	0.0039
<b>Pre Install Clearance Min</b>	0.0024 in 0.060 mm
<b>Pre Install Clearance Max</b>	0.0039 in 0.100 mm



Note: Section View not to Scale

C - Dynamic Load	79700	lbf	355000	N
C0 - Static Load	87200	lbf	388000	N
Weight	44	lb	20	kg
Max. Speed T-Seals & Grease	2000	rpm		
Rad. Clearance - Max.	0.0039			

**TIMKEN**

THE TIMKEN COMPANY  
NORTH CANTON, OHIO USA

**QATU18A308S**  
Single Concentric Take-Up Block

Every reasonable effort has been made to ensure the accuracy of the information contained in this writing, but no liability is accepted for errors, omissions or for any other reason.

**FOR DISCUSSION ONLY**