



The Timken Company

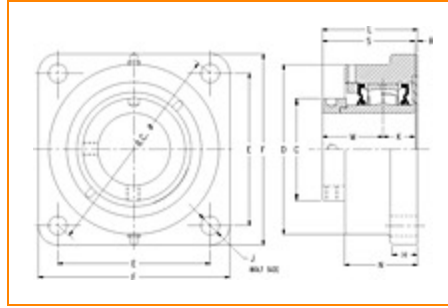
4500 Mt Pleasant St. NW

N. Canton, OH 44720

Phone: (234) 262-3000

E-Mail: CustomerCAD@timken.com • **Web site:** www.timken.com

Part Number QMF20J400S, Eccentric Four Bolt Square Flange Block



[Specifications](#) | [Dimensions](#) | [Radial and Thrust Factors](#) | [Engineering Seal Speed](#) | [Engineering Bearing Attributes](#) | [Engineering Internal Radial Clearance](#)

Specifications

Engineering Group Mounted Bearing

Bearing Number 22220

Shaft Size 4 in

Shaft Size Type Imperial

Full Timken Part Number

- QMF20J400SB
- QMF20J400SC
- QMF20J400SEB
- QMF20J400SEC
- QMF20J400SEM
- QMF20J400SEN
- QMF20J400SEO
- QMF20J400SET
- QMF20J400SM
- QMF20J400SN
- QMF20J400SO



QMF20J400ST

Locking Style

Eccentric

Housing Construction

Four-Bolt Square Flange

UPC Code

0883450068420
 0883450068437
 0883450068451
 0883450068468
 0883450068475
 0883450068482
 0883450068499
 0883450068505
 0883450161794
 0883450162470
 0883450254557
 0883450255035

Dimensions**Dimension BC**

10.96 in
 278.4 mm

Dimension C

6 in
 152.4 mm

Dimension D

8.82 in
 224 mm

Dimension E

7 3/4 in
 196.9 mm

Dimension F

9.97 in
 253.2 mm

Dimension H

1 1/2 in
 38.1 mm

Dimension J (Bolt Size)

0.875 in
 24 mm

Dimension K

1.63 in
 41.4 mm

Dimension L Exp	5.05 in 128.3 mm
------------------------	---------------------

Dimension L Fix	4.97 in 126.2 mm
------------------------	---------------------

Dimension M	2.96 in 75.2 mm
--------------------	--------------------

Dimension N	4.06 in 103.1 mm
--------------------	---------------------

Dimension R	0.37 in 9.4 mm
--------------------	-------------------

Dimension S	4.59 in 116.6 mm
--------------------	---------------------

Radial and Thrust Factors

C0 - Static Load	113000 lbf 502000 N
-------------------------	------------------------

C - Dynamic Load (Basic)	97700 lbf 435000 N
---------------------------------	-----------------------

e - Geometry Factor	0.24
----------------------------	------

Y1 - Geometry Factor	2.84
-----------------------------	------

Y2 - Geometry Factor	4.23
-----------------------------	------

Engineering Seal Speed

Oil Lubrication - M/N Seal	1200 rpm
-----------------------------------	----------

Oil Lubrication - T Seal	2000 rpm
---------------------------------	----------

Oil Lubrication - B/C/O Seal	900 rpm
-------------------------------------	---------

Grease Lubrication - M/N Seal	1200 rpm
--------------------------------------	----------

Grease Lubrication - T Seal	1600 rpm
------------------------------------	----------

Grease Lubrication - B/C/O Seal	900 rpm
--	---------

Engineering Bearing Attributes

Float	0.083 in 2.108 mm
--------------	----------------------

Shaft Tolerance	0.0030 in 0.076 mm
------------------------	-----------------------

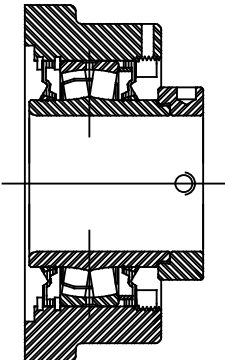
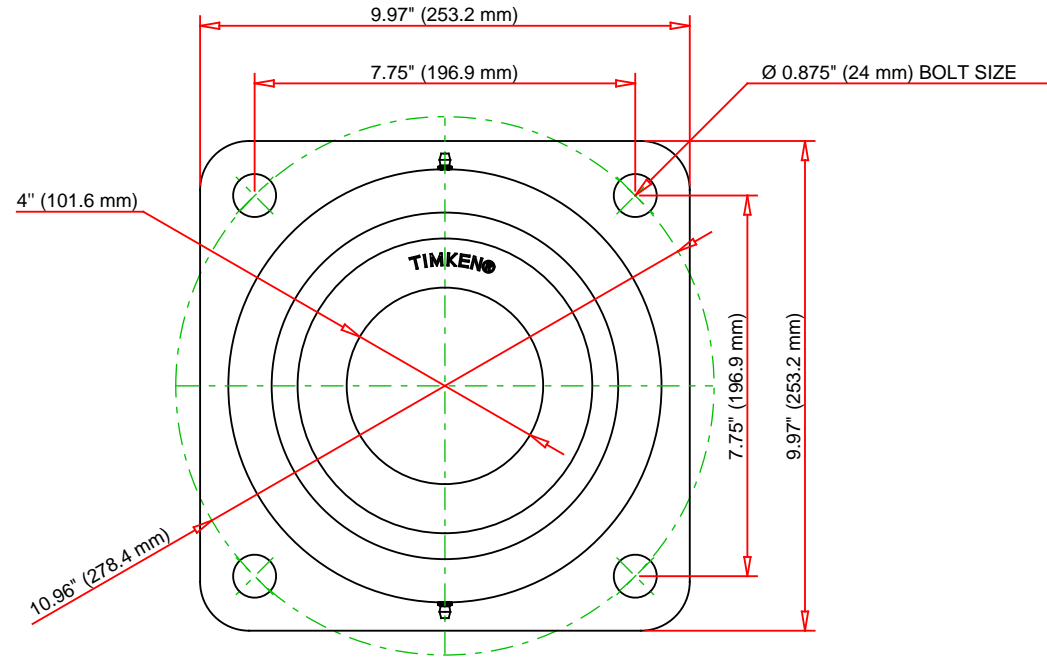
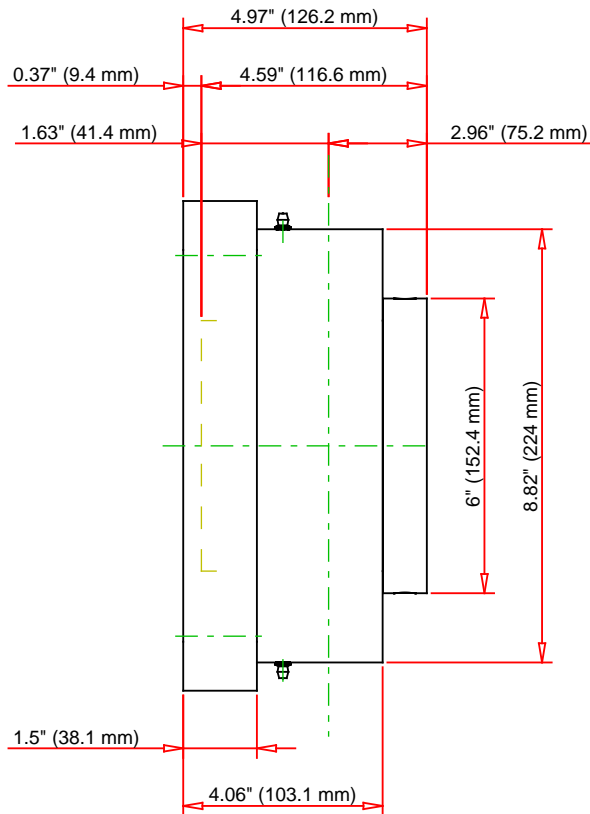
Engineering Internal Radial Clearance

Eng Internal Radial Clearance - Min	0.003
--	-------

Eng Internal Radial Clearance - Max	0.0047
--	--------

Pre Install Clearance Min	0.0030 in 0.075 mm
----------------------------------	-----------------------

Pre Install Clearance Max	0.0047 in 0.120 mm
----------------------------------	-----------------------



Note: Section View not to Scale

C - Dynamic Load	97700	lbf	435000	N
C0 - Static Load	113000	lbf	502000	N
Weight	55	lb	24.9	kg
Max. Speed T-Seals & Grease	1600	rpm		
Rad. Clearance - Max.	0.0047			

TIMKEN

THE TIMKEN COMPANY
NORTH CANTON, OHIO USA

QMF20J400S

Eccentric Four Bolt Square Flange Block

Every reasonable effort has been made to ensure the accuracy of the information contained in this writing, but no liability is accepted for errors, omissions or for any other reason.

FOR DISCUSSION ONLY