


The Timken Company

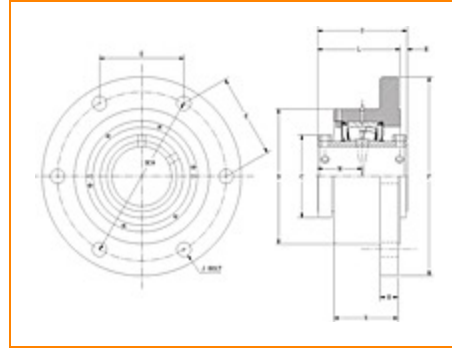
4500 Mt Pleasant St. NW

N. Canton, OH 44720

Phone: (234) 262-3000

E-Mail: CustomerCAD@timken.com • **Web site:** www.timken.com

Part Number QAAF26A415S, Double Concentric Round Flange Block



[Specifications](#) | [Dimensions](#) | [Radial and Thrust Factors](#) | [Engineering Seal Speed](#) | [Engineering Bearing Attributes](#) | [Engineering Internal Radial Clearance](#)

Specifications

Engineering Group Mounted Bearing

Bearing Number 22226

Shaft Size 4 15/16 in

Shaft Size Type Imperial

Full Timken Part Number

- QAAF26A415SB
- QAAF26A415SC
- QAAF26A415SEB
- QAAF26A415SEC
- QAAF26A415SEM
- QAAF26A415SEN
- QAAF26A415SEO
- QAAF26A415SET
- QAAF26A415SM
- QAAF26A415SN
- QAAF26A415SO
- QAAF26A415ST



Locking Style	Double Concentric
----------------------	-------------------

Housing Construction	Round Flange
-----------------------------	--------------

UPC Code	0883450136839
	0883450136846
	0883450136853
	0883450136860
	0883450136877
	0883450136884
	0883450136891
	0883450136907
	0883450192934
	0883450193122
0883450270137	
0883450270311	

Dimensions

Dimension BC	14 in 355.6 mm
---------------------	-------------------

Dimension C	6.89 in 175 mm
--------------------	-------------------

Dimension D	11.19 in 284.2 mm
--------------------	----------------------

Dimension E	7 in 177.8 mm
--------------------	------------------

Dimension F	16.5000 in 419.100 mm
--------------------	--------------------------

Dimension H	1 1/2 in 38.1 mm
--------------------	---------------------

Dimension J (Bolt Size)	1.125 in 24 mm
--------------------------------	-------------------

Dimension L Exp	6.96 in 176.8 mm
------------------------	---------------------

Dimension L Fix	6.88 in 174.8 mm
------------------------	---------------------

Dimension M	3.72 in 94.5 mm
--------------------	--------------------

Dimension N	5.32 in 135.1 mm
--------------------	---------------------

Dimension RAA	0.56 in 14.2 mm
----------------------	--------------------

Dimension SAA	7.44 in 189 mm
----------------------	-------------------

Radial and Thrust Factors

C0 - Static Load	212000 lbf 945000 N
-------------------------	------------------------

C - Dynamic Load (Basic)	170000 lbf 757000 N
---------------------------------	------------------------

e - Geometry Factor	0.26
----------------------------	------

Y1 - Geometry Factor	2.43
-----------------------------	------

Y2 - Geometry Factor	3.61
-----------------------------	------

Engineering Seal Speed

Oil Lubrication - M/N Seal	700 rpm
-----------------------------------	---------

Oil Lubrication - T Seal	1500 rpm
---------------------------------	----------

Oil Lubrication - B/C/O Seal	400 rpm
-------------------------------------	---------

Grease Lubrication - M/N Seal	700 rpm
--------------------------------------	---------

Grease Lubrication - T Seal	1000 rpm
------------------------------------	----------

Grease Lubrication - B/C/O Seal	400 rpm
--	---------

Engineering Bearing Attributes

Float	0.083 in 2.108 mm
--------------	----------------------

Shaft Tolerance	0.0050 in 0.127 mm
------------------------	-----------------------

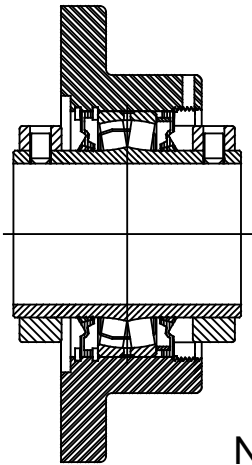
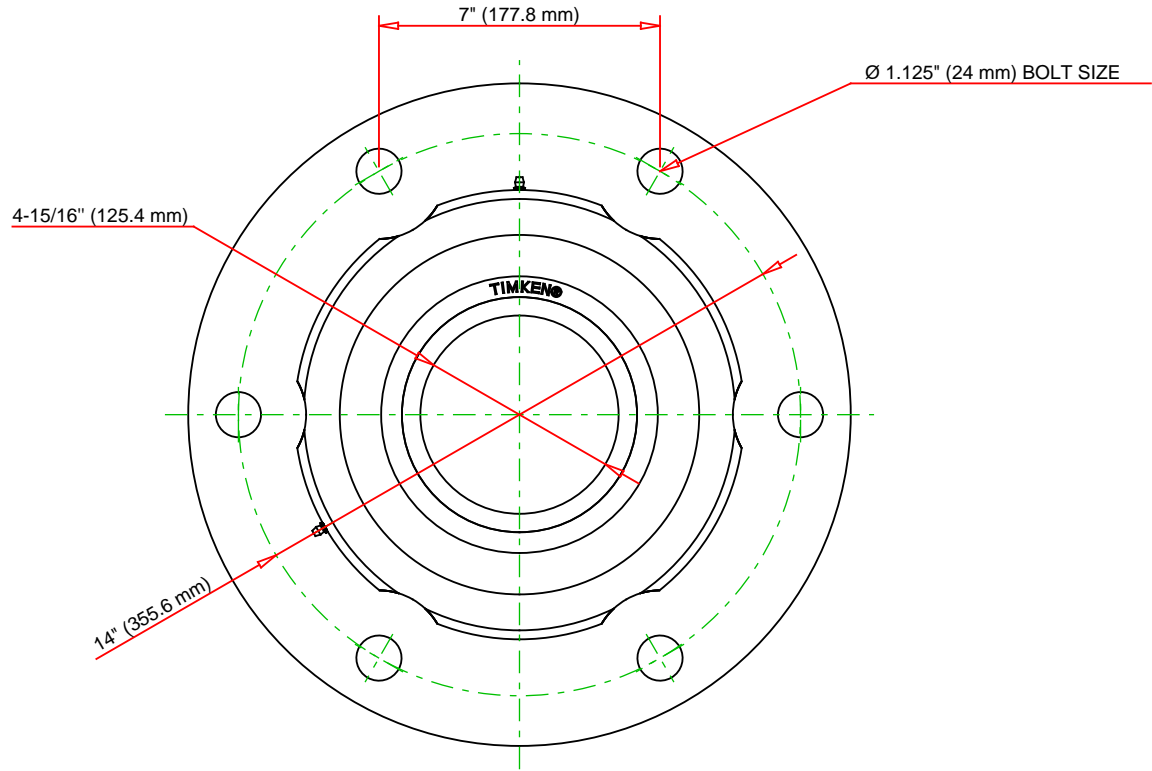
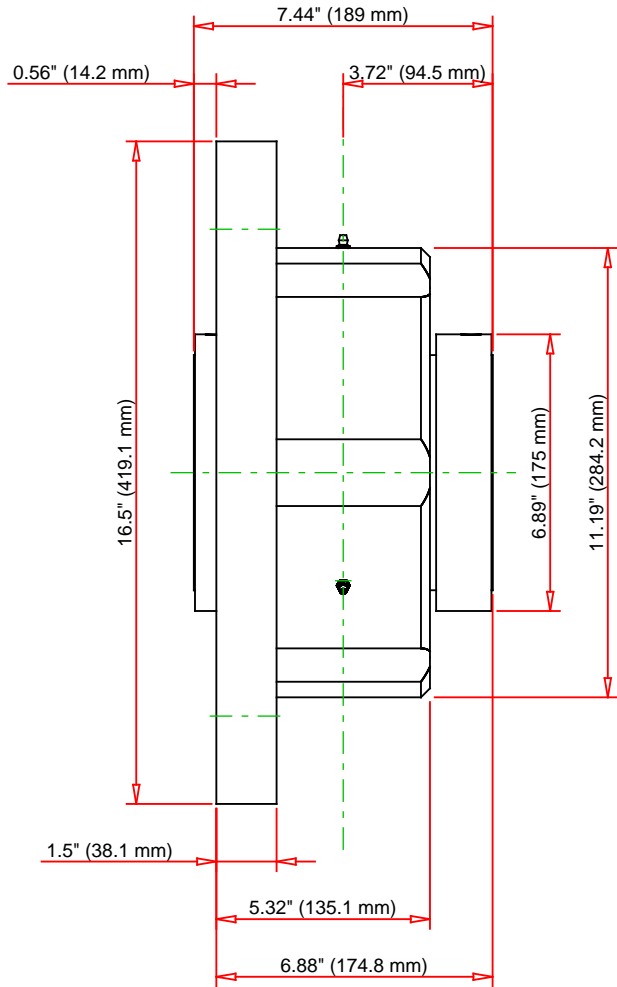
Engineering Internal Radial Clearance

Eng Internal Radial Clearance - Min	0.0037
--	--------

Eng Internal Radial Clearance - Max	0.0057
--	--------

Pre Install Clearance Min	0.0037 in 0.095 mm
----------------------------------	-----------------------

Pre Install Clearance Max	0.0057 in 0.145 mm
----------------------------------	-----------------------



Note: Section View not to Scale

C - Dynamic Load	170000	lbf	757000	kN
C0 - Static Load	212000	lbf	945000	kN
Weight	115	lb	52.2	kg
Max. Speed T-Seals & Grease	1000	rpm		
Rad. Clearance - Max.	0.0057			

TIMKEN

THE TIMKEN COMPANY
NORTH CANTON, OHIO USA

QAAF26A415S

Double Concentric Round Flange
Block

Every reasonable effort has been made to ensure the accuracy of the information contained in this writing, but no liability is accepted for errors, omissions or for any other reason.

FOR DISCUSSION ONLY