



The Timken Company

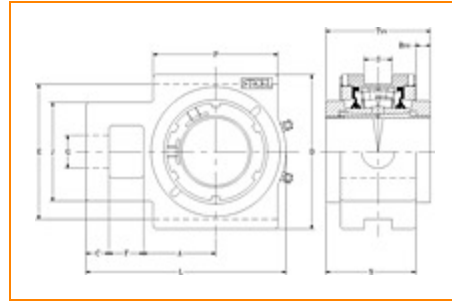
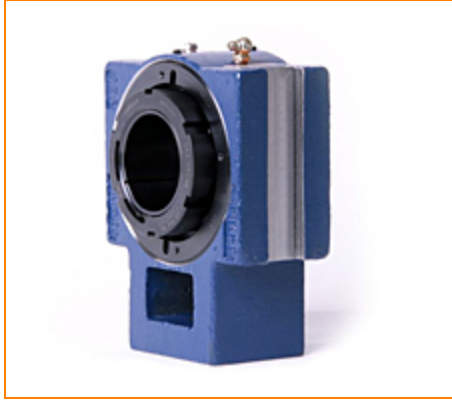
4500 Mt Pleasant St. NW

N. Canton, OH 44720

Phone: (234) 262-3000

E-Mail: CustomerCAD@timken.com • **Web site:** www.timken.com

Part Number QVVTU14V207S, Double V-Lock Take-Up Block



[Specifications](#) | [Dimensions](#) | [Radial and Thrust Factors](#) | [Engineering Seal Speed](#) | [Engineering Bearing Attributes](#) | [Engineering Internal Radial Clearance](#)

Specifications

Engineering Group Mounted Bearing

Bearing Number 22214

Shaft Size 2 7/16 in

Shaft Size Type Imperial

Full Timken Part Number

- QVVTU14V207SB
- QVVTU14V207SC
- QVVTU14V207SEB
- QVVTU14V207SEC
- QVVTU14V207SEM
- QVVTU14V207SEN
- QVVTU14V207SEO
- QVVTU14V207SET
- QVVTU14V207SM
- QVVTU14V207SN
- QVVTU14V207SO
- QVVTU14V207ST



Locking Style	Double V-Lock
----------------------	---------------

Housing Construction	Take-Up
-----------------------------	---------

UPC Code	0883450376204
	0883450376211
	0883450376228
	0883450376235
	0883450376242
	0883450376259
	0883450376266
	0883450376273
	0883450376280
	0883450376297
	0883450376303
0883450376310	

Dimensions

Dimension A1	2.75 in 69.9 mm
---------------------	--------------------

Dimension C	0.88 in 22.4 mm
--------------------	--------------------

Dimension D	5.88 in 149.4 mm
--------------------	---------------------

Dimension E	5.13 in 130.3 mm
--------------------	---------------------

Dimension F	1.31 in 33.3 mm
--------------------	--------------------

Dimension G	1.31 in 33.3 mm
--------------------	--------------------

Dimension J	3.75 in 95.3 mm
--------------------	--------------------

Dimension L	7.63 in 193.8 mm
--------------------	---------------------

Dimension N	3.48 in 88.4 mm
Dimension P	4.75 in 120.7 mm
Dimension RVV	0.61 in 15.5 mm
Dimension S	1.06 in 26.9 mm
Dimension TVV	4.09 in 103.9 mm

Radial and Thrust Factors

C0 - Static Load	52000 lbf 231000 N
C - Dynamic Load (Basic)	47800 lbf 213000 N
e - Geometry Factor	0.23
Y1 - Geometry Factor	2.90
Y2 - Geometry Factor	4.32

Engineering Seal Speed

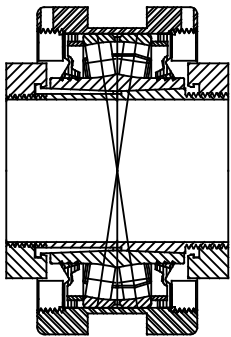
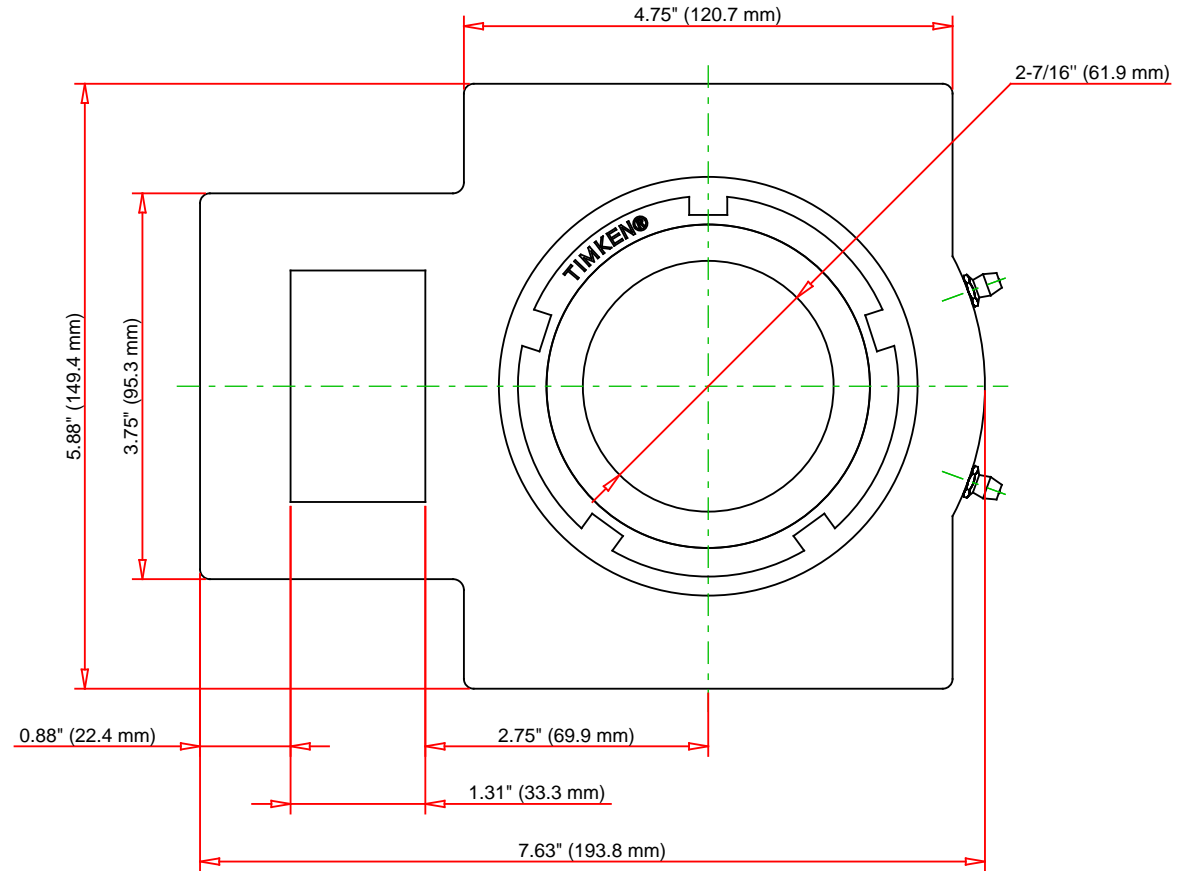
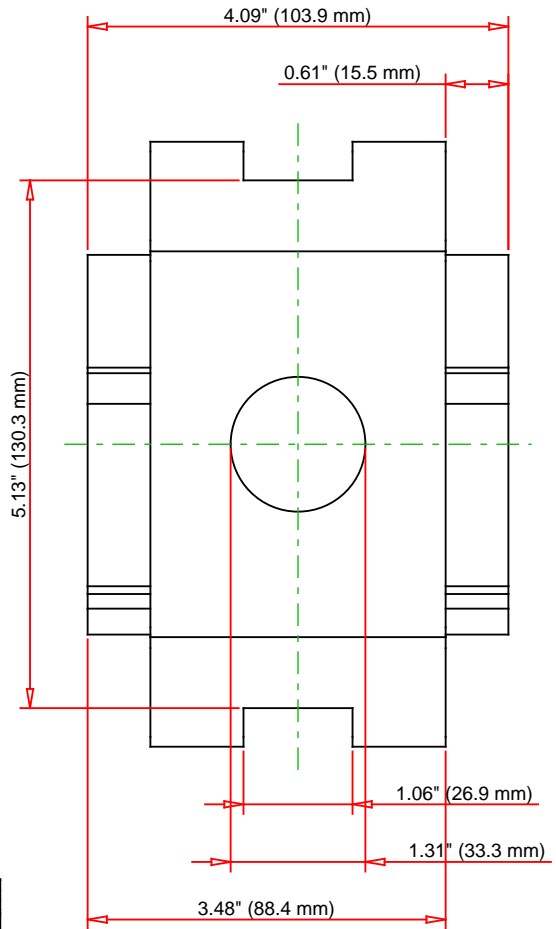
Oil Lubrication - M/N Seal	1700 rpm
Oil Lubrication - T Seal	3050 rpm
Oil Lubrication - B/C/O Seal	1400 rpm
Grease Lubrication - M/N Seal	1700 rpm
Grease Lubrication - T Seal	2600 rpm
Grease Lubrication - B/C/O Seal	1400 rpm

Engineering Bearing Attributes

Float	0.08 in 2.11 mm
Shaft Tolerance	0.0015 in 0.038 mm

Engineering Internal Radial Clearance

Eng Internal Radial Clearance - Min	0.0037
Eng Internal Radial Clearance - Max	0.0047
Pre Install Clearance Min	0.0030 in 0.075 mm
Pre Install Clearance Max	0.0037 in 0.094 mm



Note: Section View not to Scale

C - Dynamic Load	47800	lbf	213000	N
C0 - Static Load	52000	lbf	231000	N
Weight	17	lb	7.7	kg
Max. Speed T-Seals & Grease	2600	rpm		
Rad. Clearance - Max.	0.0047			

TIMKEN

THE TIMKEN COMPANY
NORTH CANTON, OHIO USA

QVVTU14V207S
Double V-Lock Take-Up Block

Every reasonable effort has been made to ensure the accuracy of the information contained in this writing, but no liability is accepted for errors, omissions or for any other reason.

FOR DISCUSSION ONLY