


**The Timken Company**

4500 Mt Pleasant St. NW

N. Canton, OH 44720

**Phone:** (234) 262-3000

**E-Mail:** [CustomerCAD@timken.com](mailto:CustomerCAD@timken.com) • **Web site:** [www.timken.com](http://www.timken.com)
**Part Number QAC10A115S, Single Concentric Piloted Flange Cartridge**


[Specifications](#) | [Dimensions](#) | [Radial and Thrust Factors](#) | [Engineering Seal Speed](#) | [Engineering Bearing Attributes](#) | [Engineering Internal Radial Clearance](#)

**Specifications**

**Engineering Group** Mounted Bearing

**Bearing Number** 22210

**Shaft Size** 1 15/16 in

**Shaft Size Type** Imperial

**Full Timken Part Number**

- QAC10A115SB
- QAC10A115SC
- QAC10A115SEB
- QAC10A115SEC
- QAC10A115SEM
- QAC10A115SEN
- QAC10A115SEO
- QAC10A115SET
- QAC10A115SM
- QAC10A115SN
- QAC10A115SO
- QAC10A115ST
- QAC10A115STHT



<b>Locking Style</b>	Single Concentric
----------------------	-------------------

<b>Housing Construction</b>	Piloted Flange Cartridge
-----------------------------	--------------------------

<b>UPC Code</b>	0883450034708
	0883450034715
	0883450034739
	0883450034746
	0883450034753
	0883450034760
	0883450034777
	0883450034784
	0883450193139
	0883450193290
	0883450270328
0883450270489	
0883450434300	

## Dimensions

<b>Dimension BC</b>	5.38 in 136.7 mm
---------------------	---------------------

<b>Dimension B Exp</b>	2.02 in 51.3 mm
------------------------	--------------------

<b>Dimension B Fix</b>	1.97 in 50 mm
------------------------	------------------

<b>Dimension C</b>	2.88 in 73.2 mm
--------------------	--------------------

<b>Dimension D</b>	4.47 in 113.5 mm
--------------------	---------------------

<b>Dimension E</b>	3.8 in 96.5 mm
--------------------	-------------------

<b>Dimension F</b>	6.38 in 162.1 mm
--------------------	---------------------

<b>Dimension G</b>	4.5 in 114.3 mm
--------------------	--------------------

<b>Dimension H</b>	0.63 in 16 mm
<b>Dimension J (Bolt Size)</b>	0.438 in 10 mm
<b>Dimension KA</b>	1 in 25.4 mm
<b>Dimension L Exp</b>	3.08 in 78.2 mm
<b>Dimension L Fix</b>	3.03 in 77 mm
<b>Dimension M</b>	1.87 in 47.5 mm
<b>Dimension N</b>	1.06 in 26.9 mm
<b>Dimension RA</b>	0.16 in 4.1 mm
<b>Dimension SA</b>	2.87 in 72.9 mm

## Radial and Thrust Factors

<b>C0 - Static Load</b>	26600 lbf 118000 N
<b>C - Dynamic Load (Basic)</b>	26300 lbf 117000 N
<b>e - Geometry Factor</b>	0.24
<b>Y1 - Geometry Factor</b>	2.84
<b>Y2 - Geometry Factor</b>	4.23

## Engineering Seal Speed

<b>Oil Lubrication - M/N Seal</b>	2400 rpm
-----------------------------------	----------

<b>Oil Lubrication - T Seal</b>	4200 rpm
---------------------------------	----------

<b>Oil Lubrication - B/C/O Seal</b>	1800 rpm
-------------------------------------	----------

<b>Grease Lubrication - M/N Seal</b>	2400 rpm
--------------------------------------	----------

<b>Grease Lubrication - T Seal</b>	3550 rpm
------------------------------------	----------

<b>Grease Lubrication - B/C/O Seal</b>	1800 rpm
--	----------

## Engineering Bearing Attributes

<b>Float</b>	0.050 in 1.270 mm
--------------	----------------------

<b>Shaft Tolerance</b>	0.0015 in 0.038 mm
------------------------	-----------------------

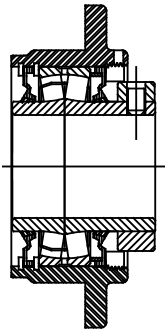
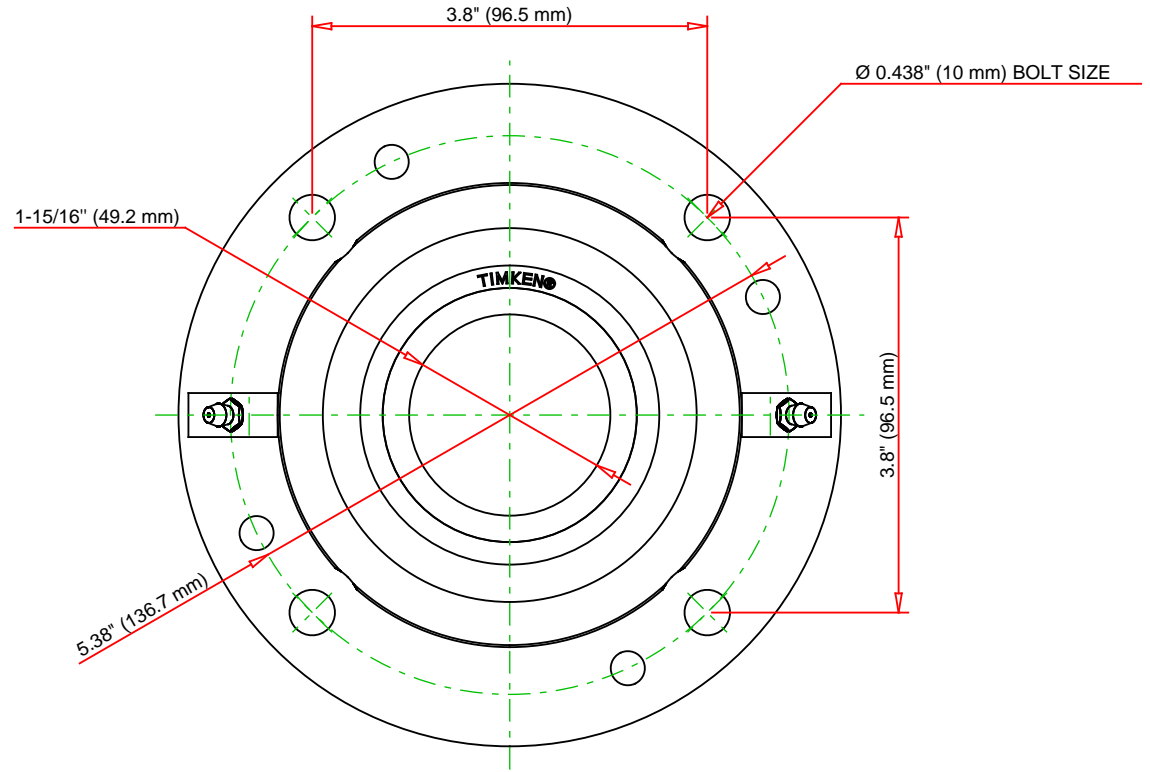
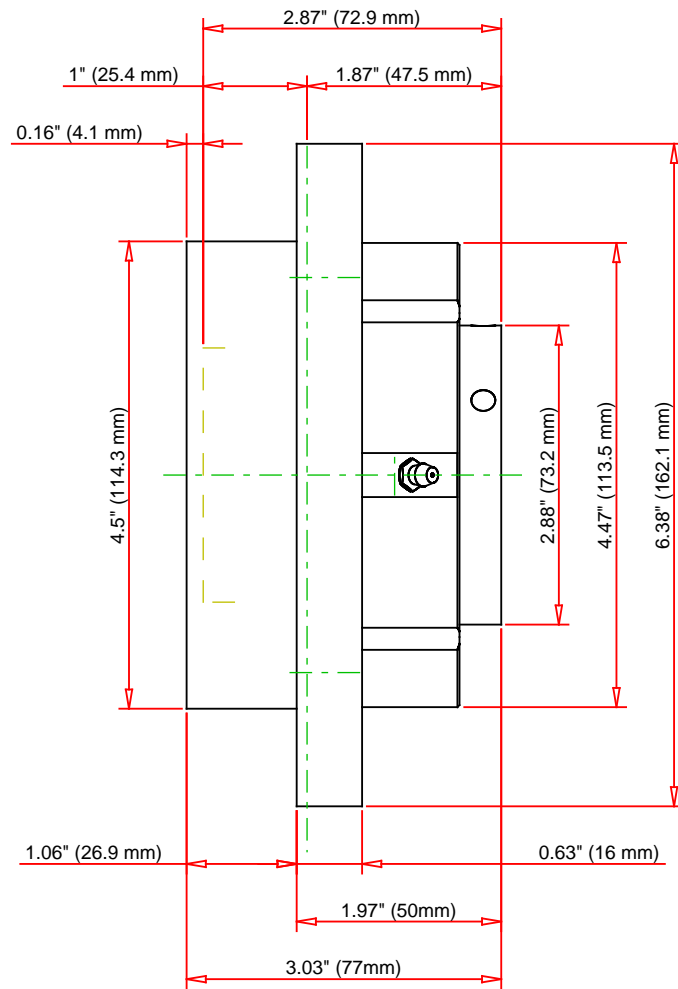
## Engineering Internal Radial Clearance

<b>Eng Internal Radial Clearance - Min</b>	0.0016
--	--------

<b>Eng Internal Radial Clearance - Max</b>	0.0026
--	--------

<b>Pre Install Clearance Min</b>	0.0016 in 0.040 mm
----------------------------------	-----------------------

<b>Pre Install Clearance Max</b>	0.0026 in 0.065 mm
----------------------------------	-----------------------



Note: Section View not to Scale

C - Dynamic Load	26300	lbf	117000	N
C0 - Static Load	26600	lbf	118000	N
Weight	10	lb	4.5	kg
Max. Speed T-Seals & Grease	3550	rpm		
Rad. Clearance - Max.	0.0026			

**TIMKEN**

THE TIMKEN COMPANY  
NORTH CANTON, OHIO USA

**QAC10A115S**

Single Concentric Piloted Flange  
Cartridge

Every reasonable effort has been made to ensure the accuracy of the information contained in this writing, but no liability is accepted for errors, omissions or for any other reason.

**FOR DISCUSSION ONLY**