



The Timken Company

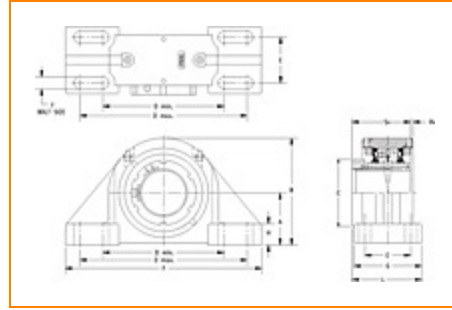
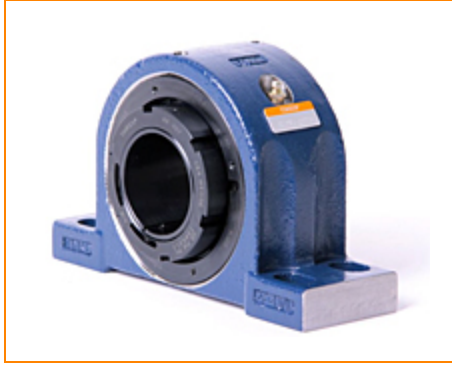
4500 Mt Pleasant St. NW

N. Canton, OH 44720

Phone: (234) 262-3000

E-Mail: CustomerCAD@timken.com • **Web site:** www.timken.com

Part Number QVPK15V207S, Single V-Lock Four-Bolt Pillow Block



[Specifications](#) | [Dimensions](#) | [Radial and Thrust Factors](#) | [Engineering Seal Speed](#) | [Engineering Bearing Attributes](#) | [Engineering Internal Radial Clearance](#)

Specifications

Engineering Group Mounted Bearing

Bearing Number 22215

Shaft Size 2 7/16 in

Shaft Size Type Imperial

Full Timken Part Number

- QVPK15V207SB
- QVPK15V207SC
- QVPK15V207SEB
- QVPK15V207SEC
- QVPK15V207SEM
- QVPK15V207SEN
- QVPK15V207SEO
- QVPK15V207SET
- QVPK15V207SM
- QVPK15V207SN
- QVPK15V207SO
- QVPK15V207ST



Locking Style	Single V-Lock
Housing Construction	Four-Bolt Pillow Block
UPC Code	0883450054232 0883450054249 0883450207010 0883450207164 0883450219440 0883450219594 0883450231862 0883450232012 0883450240604 0883450240758 0883450245562 0883450245715

Dimensions

Dimension A	3-1/2 in 88.9 mm
Dimension B	6.83 in 173.5 mm
Dimension C	3.7 in 94 mm
Dimension D Min	9.06 in 230.1 mm
Dimension D Max	10.44 in 265.2 mm
Dimension E	2.75 in 69.9 mm
Dimension F	13 in 330.2 mm
Dimension G	4.25 in 108 mm

Dimension H	1.54 in 39.1 mm
Dimension J (Bolt Size)	0.75 in 20 mm
Dimension L	4.17 in 105.9 mm
Dimension RV	0.11 in 2.8 mm
Dimension SV	3.25 in 82.6 mm

Radial and Thrust Factors

C0 - Static Load	54100 lbf 240000 N
C - Dynamic Load (Basic)	49900 lbf 222000 N
e - Geometry Factor	0.22
Y1 - Geometry Factor	3.14
Y2 - Geometry Factor	4.67

Engineering Seal Speed

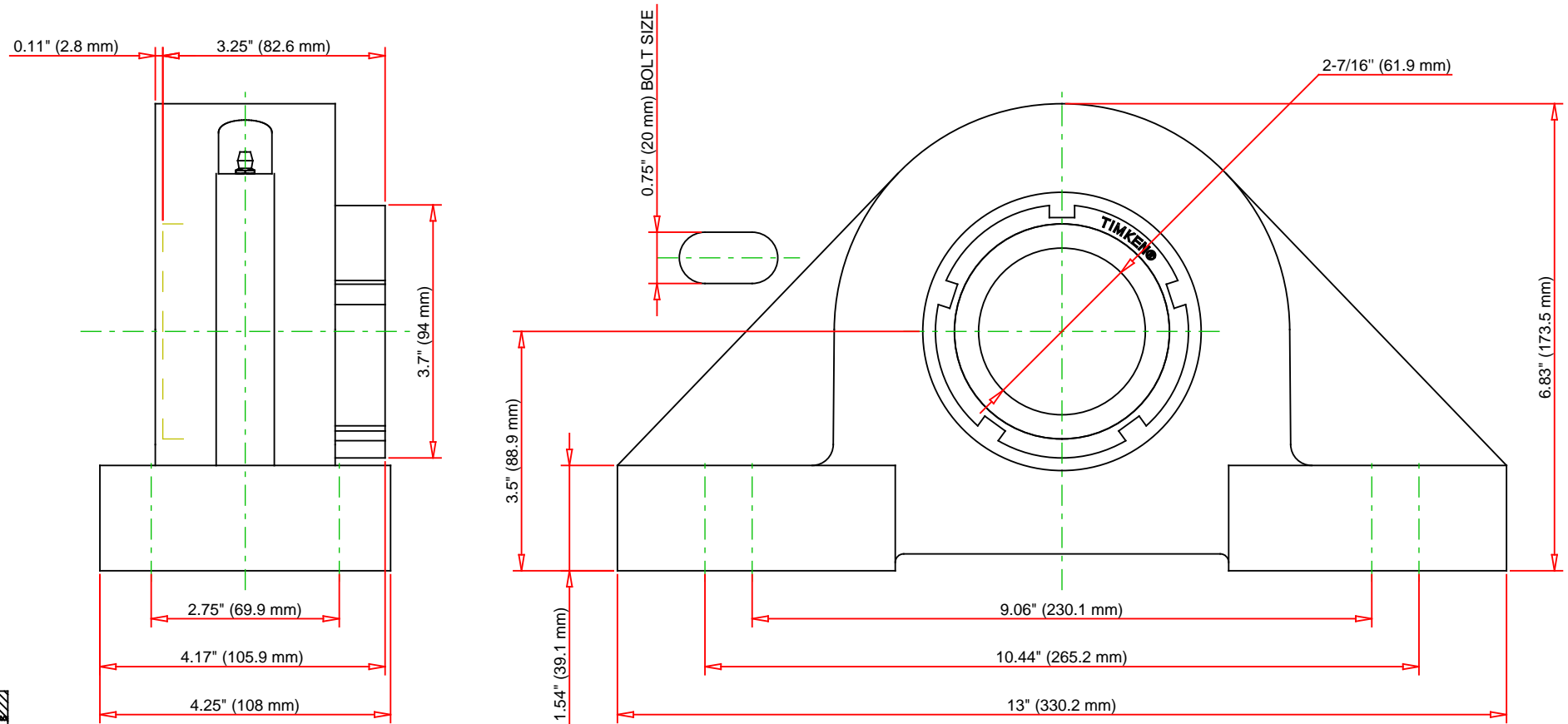
Oil Lubrication - M/N Seal	1600 rpm
Oil Lubrication - T Seal	2900 rpm
Oil Lubrication - B/C/O Seal	1300 rpm
Grease Lubrication - M/N Seal	1600 rpm
Grease Lubrication - T Seal	2400 rpm
Grease Lubrication - B/C/O Seal	1300 rpm

Engineering Bearing Attributes

Float	0.083 in 2.108 mm
Shaft Tolerance	0.0015 in 0.038 mm

Engineering Internal Radial Clearance

Eng Internal Radial Clearance - Min	0.0030
Eng Internal Radial Clearance - Max	0.0037
Pre Install Clearance Min	0.0030 in 0.075 mm
Pre Install Clearance Max	0.0037 in 0.095 mm



C - Dynamic Load	49900	lbf	222000	N
C0 - Static Load	54100	lbf	240000	N
Weight	29	lb	13.2	kg
Max. Speed T-Seals & Grease	2400	rpm		
Rad. Clearance - Max.	0.0037			

TIMKEN

THE TIMKEN COMPANY
NORTH CANTON, OHIO USA

QVPK15V207S
Single V-Lock Four-Bolt Pillow Block

Every reasonable effort has been made to ensure the accuracy of the information contained in this writing, but no liability is accepted for errors, omissions or for any other reason.

FOR DISCUSSION ONLY