



The Timken Company

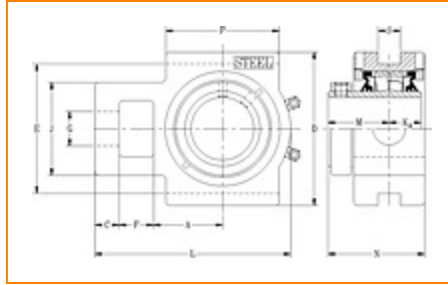
4500 Mt Pleasant St. NW

N. Canton, OH 44720

Phone: (234) 262-3000

E-Mail: CustomerCAD@timken.com • **Web site:** www.timken.com

Part Number QATU20A400S, Single Concentric Take-Up Block



[Specifications](#) | [Dimensions](#) | [Radial and Thrust Factors](#) | [Engineering Seal Speed](#) | [Engineering Bearing Attributes](#) | [Engineering Internal Radial Clearance](#)

Specifications -

Engineering Group	Mounted Bearing
Bearing Number	22220
Shaft Size	4 in
Shaft Size Type	Imperial
Full Timken Part Number	QATU20A400SB QATU20A400SC QATU20A400SEB QATU20A400SEC QATU20A400SEM QATU20A400SEN QATU20A400SEO QATU20A400SET QATU20A400SM QATU20A400SN QATU20A400SO



QATU20A400ST

Locking Style	Single Concentric
Housing Construction	Take-Up
UPC Code	0883450051101 0883450051118 0883450051132 0883450051149 0883450051156 0883450051163 0883450051170 0883450051187 0883450195300 0883450195461 0883450272483 0883450272650

Dimensions

Dimension A1	4.13 in 104.9 mm
Dimension C	1.13 in 28.7 mm
Dimension D	9.44 in 239.8 mm
Dimension E	8.63 in 219.2 mm
Dimension F	2.13 in 54.1 mm
Dimension G	2.06 in 52.3 mm
Dimension J	5.63 in 143 mm
Dimension L	11.69 in 296.9 mm

Dimension KA	1.63 in 41.4 mm
---------------------	--------------------

Dimension M	2.97 in 75.4 mm
--------------------	--------------------

Dimension N	4.79 in 121.7 mm
--------------------	---------------------

Dimension P	7 in 177.8 mm
--------------------	------------------

Dimension S	2.06 in 52.3 mm
--------------------	--------------------

Radial and Thrust Factors

C0 - Static Load	113000 lbf 502000 N
-------------------------	------------------------

C - Dynamic Load (Basic)	97700 lbf 435000 N
---------------------------------	-----------------------

e - Geometry Factor	0.24
----------------------------	------

Y1 - Geometry Factor	2.85
-----------------------------	------

Y2 - Geometry Factor	4.24
-----------------------------	------

Engineering Seal Speed

Oil Lubrication - M/N Seal	1200 rpm
-----------------------------------	----------

Oil Lubrication - T Seal	2000 rpm
---------------------------------	----------

Oil Lubrication - B/C/O Seal	900 rpm
-------------------------------------	---------

Grease Lubrication - M/N Seal	1200 rpm
--------------------------------------	----------

Grease Lubrication - T Seal	1600 rpm
------------------------------------	----------

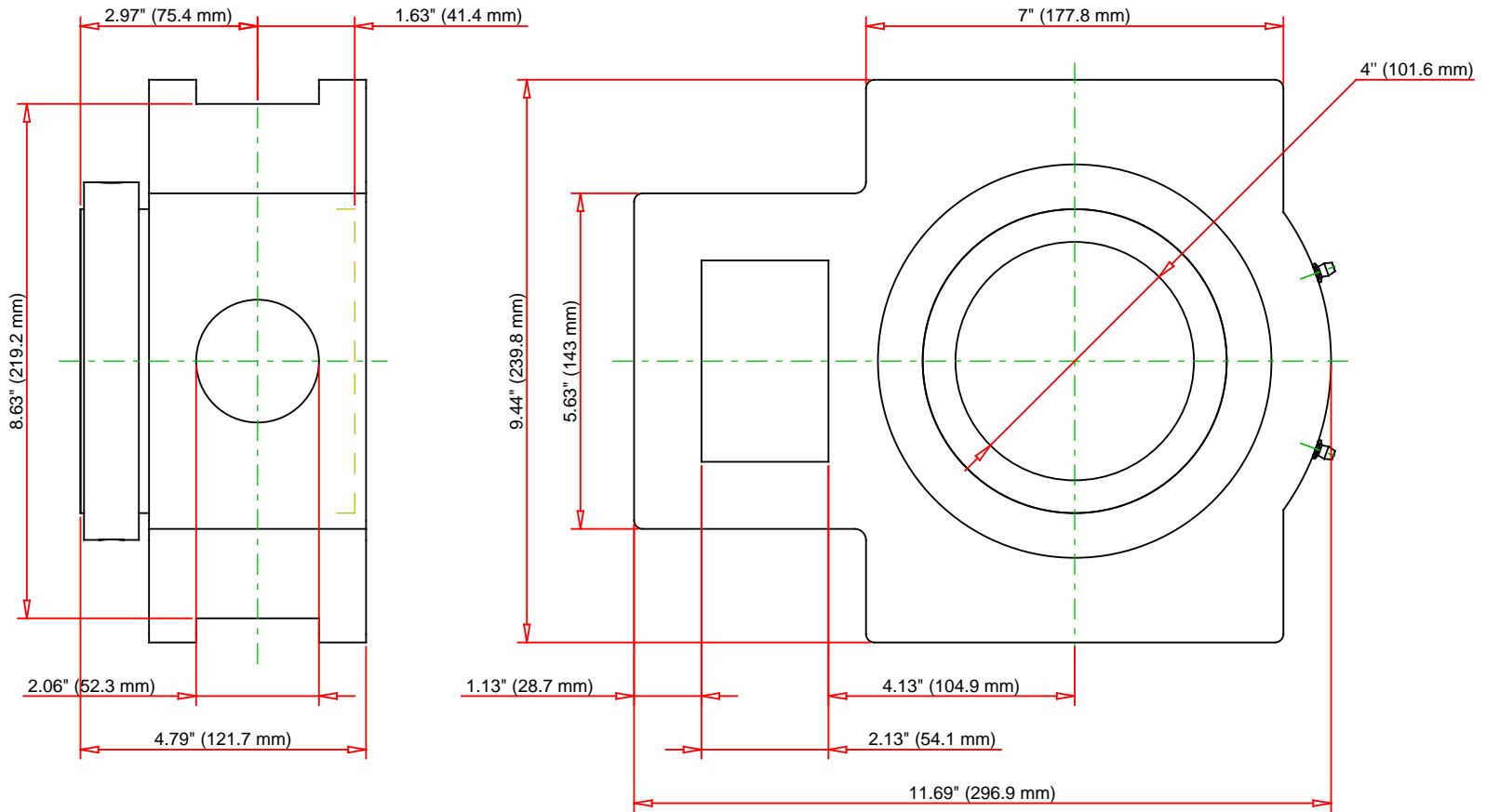
Grease Lubrication - B/C/O Seal	900 rpm
--	---------

Engineering Bearing Attributes

Float	0.08 in 2.03 mm
Shaft Tolerance	0.0030 in 0.076 mm

Engineering Internal Radial Clearance

Eng Internal Radial Clearance - Min	0.0030
Eng Internal Radial Clearance - Max	0.0047
Pre Install Clearance Min	0.0030 in 0.075 mm
Pre Install Clearance Max	0.0047 in 0.120 mm



Note: Section View not to Scale

C - Dynamic Load	97700	lbf	435000	N
C0 - Static Load	113000	lbf	502000	N
Weight	58	lb	26.3	kg
Max. Speed T-Seals & Grease	1600	rpm		
Rad. Clearance - Max.	0.0047			

TIMKEN

THE TIMKEN COMPANY
NORTH CANTON, OHIO USA

QATU20A400S
Single Concentric Take-Up Block

Every reasonable effort has been made to ensure the accuracy of the information contained in this writing, but no liability is accepted for errors, omissions or for any other reason.

FOR DISCUSSION ONLY