



**The Timken Company**

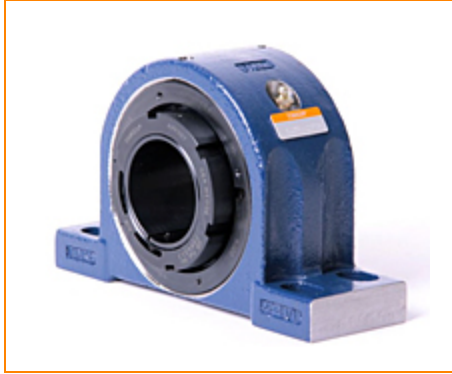
4500 Mt Pleasant St. NW

N. Canton, OH 44720

**Phone:** (234) 262-3000

**E-Mail:** [CustomerCAD@timken.com](mailto:CustomerCAD@timken.com) • **Web site:** [www.timken.com](http://www.timken.com)

## Part Number QVVP12V055S, Double V-Lock Four-Bolt Pillow Block



[Specifications](#) | [Dimensions](#) | [Radial and Thrust Factors](#) | [Engineering Seal Speed](#) | [Engineering Bearing Attributes](#) | [Engineering Internal Radial Clearance](#)

### Specifications

**Engineering Group** Mounted Bearing

**Bearing Number** 22212

**Shaft Size** 55 mm

**Shaft Size Type** Metric

**Full Timken Part Number**

- QVVP12V055SB
- QVVP12V055SC
- QVVP12V055SEB
- QVVP12V055SEC
- QVVP12V055SEM
- QVVP12V055SEN
- QVVP12V055SEO
- QVVP12V055SET
- QVVP12V055SM
- QVVP12V055SN
- QVVP12V055SO
- QVVP12V055ST



<b>Locking Style</b>	Double V-Lock
<b>Housing Construction</b>	Four-Bolt Pillow Block
<b>UPC Code</b>	883450424165 883450424172 883450424189 883450424196 883450424202 883450424219 883450424226 883450424233 883450424240 883450424257 883450424264 883450424271

## Dimensions

<b>Dimension A</b>	2.76 in 70 mm
<b>Dimension B</b>	5.53 in 140.5 mm
<b>Dimension C</b>	3.15 in 80 mm
<b>Dimension D Min</b>	7 in 177.8 mm
<b>Dimension D Max</b>	8.63 in 219.2 mm
<b>Dimension E</b>	1.38 in 35.1 mm
<b>Dimension F</b>	10 in 254 mm
<b>Dimension G</b>	2.75 in 69.9 mm

<b>Dimension H</b>	1-1/4 in 31.8 mm
<b>Dimension J (Bolt Size)</b>	0.5 in 12 mm
<b>Dimension L</b>	3.39 in 86.1 mm
<b>Dimension RVV</b>	0.82 in 20.8 mm
<b>Dimension SVV</b>	4.02 in 102.1 mm

### Radial and Thrust Factors

<b>C0 - Static Load</b>	39000 lbf 174000 N
<b>C - Dynamic Load (Basic)</b>	38100 lbf 169000 N
<b>e - Geometry Factor</b>	0.24
<b>Y1 - Geometry Factor</b>	2.84
<b>Y2 - Geometry Factor</b>	4.23

### Engineering Seal Speed

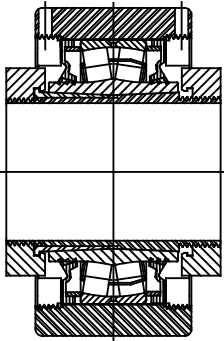
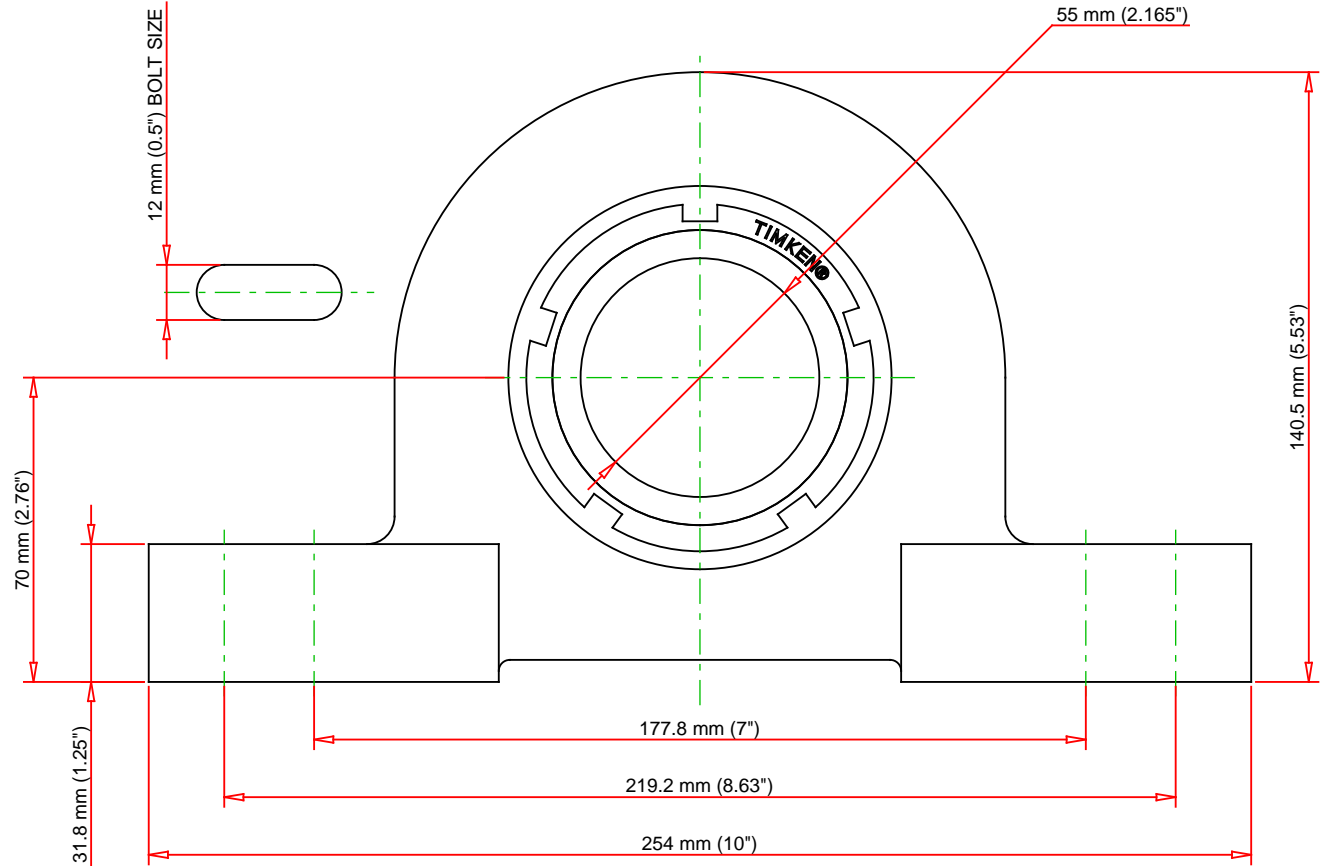
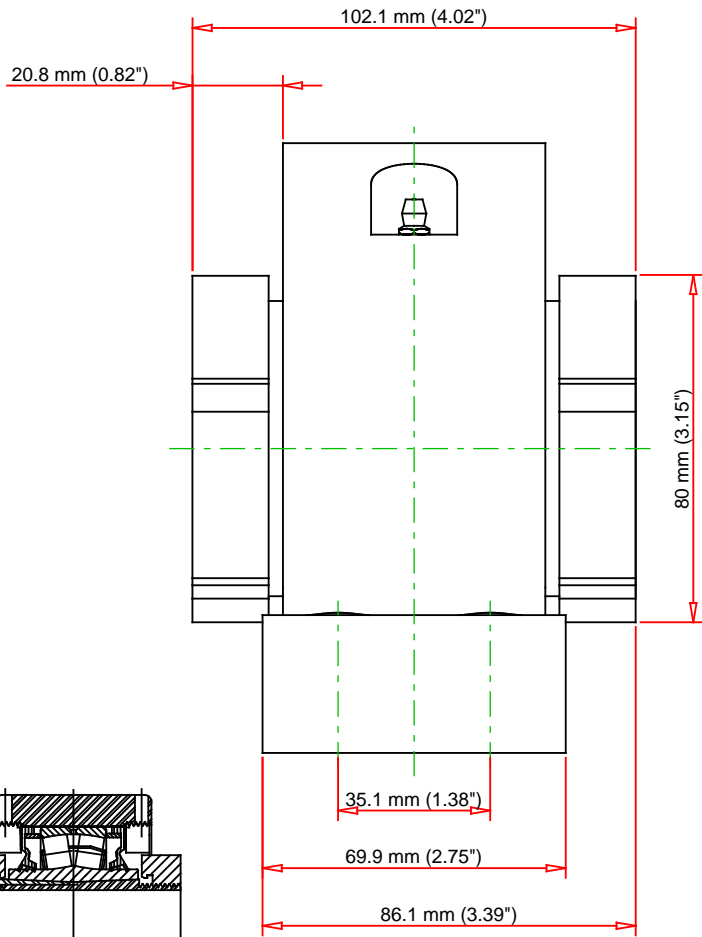
<b>Oil Lubrication - M/N Seal</b>	2000 rpm
<b>Oil Lubrication - T Seal</b>	3500 rpm
<b>Oil Lubrication - B/C/O Seal</b>	1650 rpm
<b>Grease Lubrication - M/N Seal</b>	2000 rpm
<b>Grease Lubrication - T Seal</b>	3000 rpm
<b>Grease Lubrication - B/C/O Seal</b>	1550 rpm

## Engineering Bearing Attributes

<b>Float</b>	0.050 in 1.270 mm
<b>Shaft Tolerance</b>	0.0015 in 0.038 mm

## Engineering Internal Radial Clearance

<b>Eng Internal Radial Clearance - Min</b>	0.0030
<b>Eng Internal Radial Clearance - Max</b>	0.0037
<b>Pre Install Clearance Min</b>	0.0030 in 0.075 mm
<b>Pre Install Clearance Max</b>	0.0037 in 0.094 mm



Note: Section View not to Scale

C - Dynamic Load	38100	lbf	169000	N
C0 - Static Load	39000	lbf	174000	N
Weight	22	lb	9.9	kg
Max. Speed T-Seals & Grease	3000	rpm		
Rad. Clearance - Max.	0.0037			

**TIMKEN**

THE TIMKEN COMPANY  
NORTH CANTON, OHIO USA

**QVVPG12V055S**  
Double V-Lock Four-Bolt Pillow Block

Every reasonable effort has been made to ensure the accuracy of the information contained in this writing, but no liability is accepted for errors, omissions or for any other reason.

**FOR DISCUSSION ONLY**