



The Timken Company

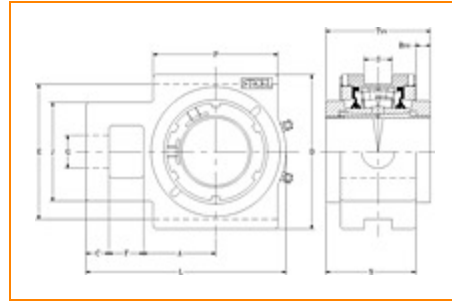
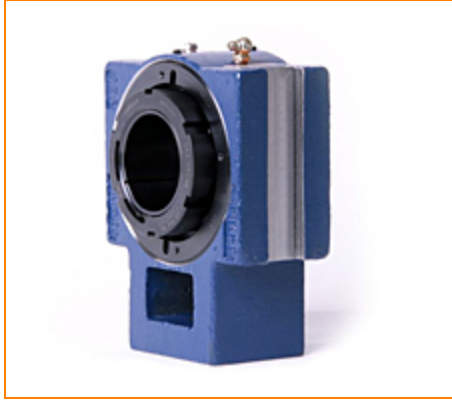
4500 Mt Pleasant St. NW

N. Canton, OH 44720

Phone: (234) 262-3000

E-Mail: CustomerCAD@timken.com • **Web site:** www.timken.com

Part Number QVVTU19V307S, Double V-Lock Take-Up Block



[Specifications](#) | [Dimensions](#) | [Radial and Thrust Factors](#) | [Engineering Seal Speed](#) | [Engineering Bearing Attributes](#) | [Engineering Internal Radial Clearance](#)

Specifications

Engineering Group Mounted Bearing

Bearing Number 22219

Shaft Size 3 7/16 in

Shaft Size Type Imperial

Full Timken Part Number

- QVVTU19V307SB
- QVVTU19V307SC
- QVVTU19V307SEB
- QVVTU19V307SEC
- QVVTU19V307SEM
- QVVTU19V307SEN
- QVVTU19V307SEO
- QVVTU19V307SET
- QVVTU19V307SM
- QVVTU19V307SN
- QVVTU19V307SO
- QVVTU19V307ST



Locking Style	Double V-Lock
----------------------	---------------

Housing Construction	Take-Up
-----------------------------	---------

UPC Code	0883450377768
	0883450377775
	0883450377782
	0883450377799
	0883450377805
	0883450377812
	0883450377829
	0883450377836
	0883450377843
	0883450377850
	0883450377867
0883450377874	

Dimensions

Dimension A1	3.63 in 92.2 mm
---------------------	--------------------

Dimension C	1 in 25.4 mm
--------------------	-----------------

Dimension D	7.63 in 193.8 mm
--------------------	---------------------

Dimension E	6.81 in 173 mm
--------------------	-------------------

Dimension F	1.81 in 46 mm
--------------------	------------------

Dimension G	1.88 in 47.8 mm
--------------------	--------------------

Dimension J	4.88 in 124 mm
--------------------	-------------------

Dimension L	10.12 in 257 mm
--------------------	--------------------

Dimension N	3.92 in 99.6 mm
Dimension P	6.25 in 158.8 mm
Dimension RVV	0.71 in 18 mm
Dimension S	1.81 in 46 mm
Dimension TVV	4.63 in 117.6 mm

Radial and Thrust Factors

C0 - Static Load	99000 lbf 441000 N
C - Dynamic Load (Basic)	86600 lbf 385000 N
e - Geometry Factor	0.23
Y1 - Geometry Factor	2.88
Y2 - Geometry Factor	4.29

Engineering Seal Speed

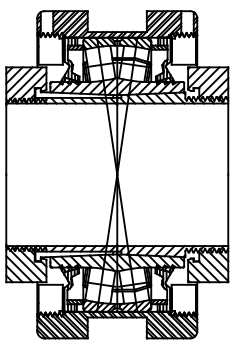
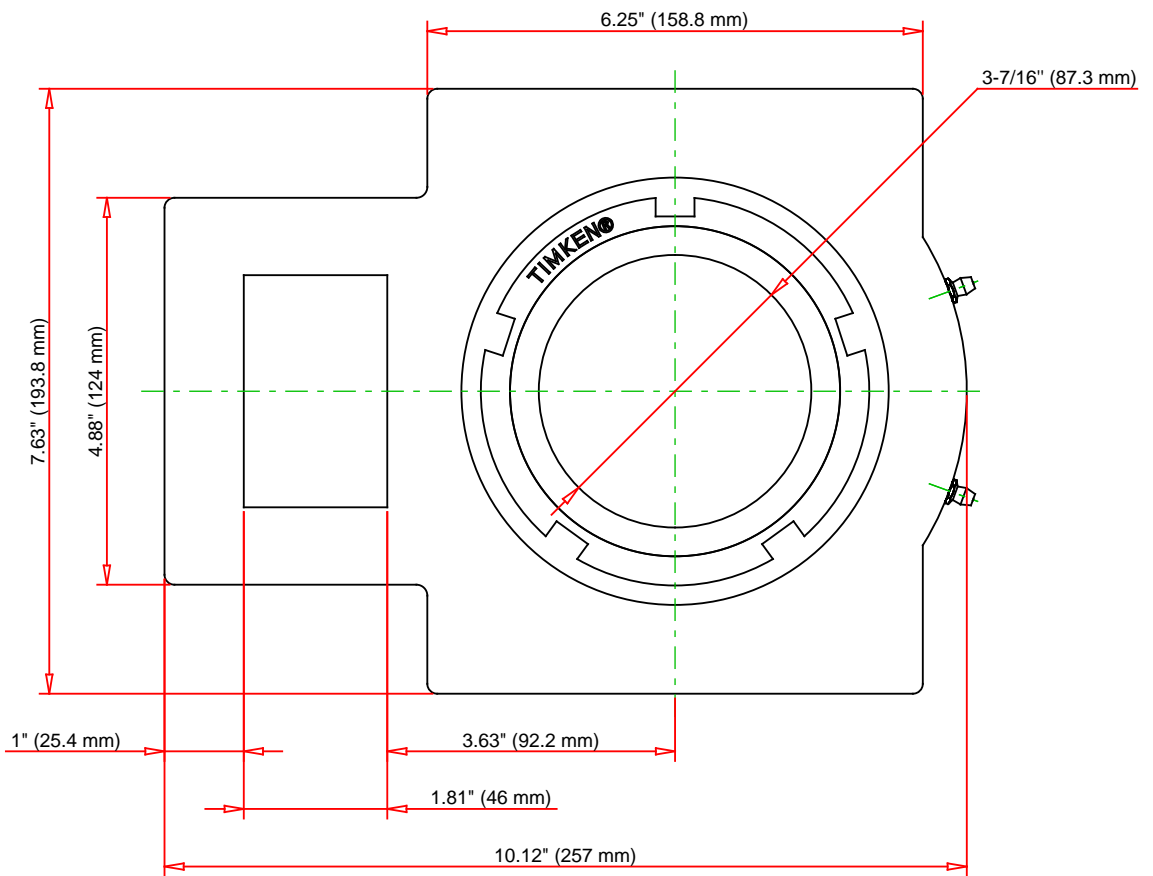
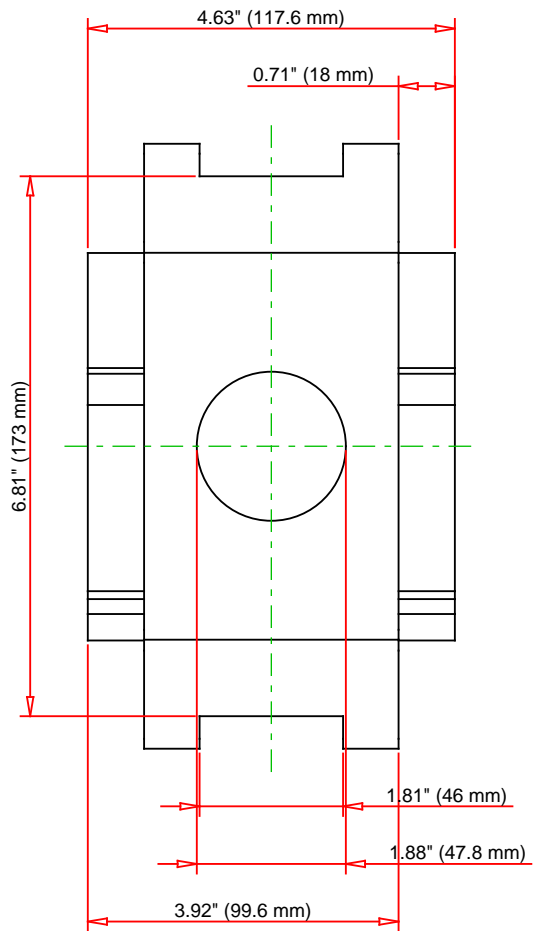
Oil Lubrication - M/N Seal	1300 rpm
Oil Lubrication - T Seal	2200 rpm
Oil Lubrication - B/C/O Seal	1000 rpm
Grease Lubrication - M/N Seal	1300 rpm
Grease Lubrication - T Seal	1800 rpm
Grease Lubrication - B/C/O Seal	950 rpm

Engineering Bearing Attributes

Float	0.08 in 2.11 mm
Shaft Tolerance	0.0030 in 0.076 mm

Engineering Internal Radial Clearance

Eng Internal Radial Clearance - Min	0.0043
Eng Internal Radial Clearance - Max	0.0055
Pre Install Clearance Min	0.0043 in 0.110 mm
Pre Install Clearance Max	0.0055 in 0.140 mm



Note: Section View not to Scale

C - Dynamic Load	86600	lbf	385000	N
C0 - Static Load	99000	lbf	441000	N
Weight	44	lb	20	kg
Max. Speed T-Seals & Grease	1800	rpm		
Rad. Clearance - Max.	0.0055			

TIMKEN
THE TIMKEN COMPANY
NORTH CANTON, OHIO USA

QVVTU19V307S
Double V-Lock Take-Up Block

Every reasonable effort has been made to ensure the accuracy of the information contained in this writing, but no liability is accepted for errors, omissions or for any other reason.

FOR DISCUSSION ONLY