


The Timken Company

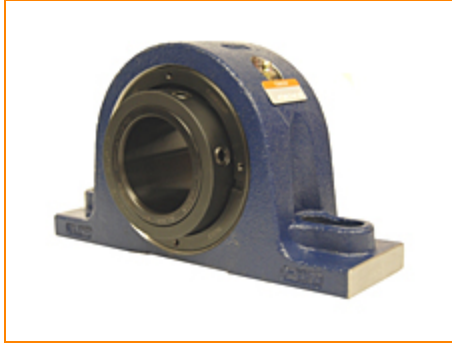
4500 Mt Pleasant St. NW

N. Canton, OH 44720

Phone: (234) 262-3000

E-Mail: CustomerCAD@timken.com • **Web site:** www.timken.com

Part Number QASN13A060S, Single Concentric Two-Bolt Pillow Block



[Specifications](#) | [Dimensions](#) | [Radial and Thrust Factors](#) | [Engineering Seal Speed](#) | [Engineering Bearing Attributes](#) | [Engineering Internal Radial Clearance](#)

Specifications

Engineering Group Mounted Bearing

Bearing Number 22213

Shaft Size 60 mm

Shaft Size Type Metric

Full Timken Part Number

- QASN13A060SB
- QASN13A060SC
- QASN13A060SEB
- QASN13A060SEC
- QASN13A060SEM
- QASN13A060SEN
- QASN13A060SEO
- QASN13A060SET
- QASN13A060SM
- QASN13A060SN
- QASN13A060SO



QASN13A060ST

Locking Style

Single Concentric

Housing Construction

Two-Bolt Pillow Block

UPC Code

0883450353441
 0883450353458
 0883450353465
 0883450353472
 0883450353489
 0883450353496
 0883450353502
 0883450353519
 0883450353526
 0883450353533
 0883450353540
 0883450353557

Dimensions**Dimension A**

3.15 in
 80 mm

Dimension B

6.18 in
 157 mm

Dimension C

3.81 in
 96.8 mm

Dimension D Min

7.72 in
 196 mm

Dimension D Max

9.25 in
 235 mm

Dimension F

10.83 in
 275 mm

Dimension G

2.91 in
 74 mm

Dimension H

1.38 in
 35 mm

Dimension J (Bolt Size)	0.625 in 16 mm
--------------------------------	-------------------

Dimension KA	1.22 in 31 mm
---------------------	------------------

Dimension L	3.62 in 92 mm
--------------------	------------------

Dimension M	2.17 in 55 mm
--------------------	------------------

Dimension RA	0.24 in 6 mm
---------------------	-----------------

Dimension SA	3.39 in 86 mm
---------------------	------------------

Radial and Thrust Factors

C0 - Static Load	48600 lbf 216000 N
-------------------------	-----------------------

C - Dynamic Load (Basic)	46400 lbf 206000 N
---------------------------------	-----------------------

e - Geometry Factor	0.24
----------------------------	------

Y1 - Geometry Factor	2.79
-----------------------------	------

Y2 - Geometry Factor	4.15
-----------------------------	------

Engineering Seal Speed

Oil Lubrication - M/N Seal	1800 rpm
-----------------------------------	----------

Oil Lubrication - T Seal	3200 rpm
---------------------------------	----------

Oil Lubrication - B/C/O Seal	1500 rpm
-------------------------------------	----------

Grease Lubrication - M/N Seal	1800 rpm
--------------------------------------	----------

Grease Lubrication - T Seal	2800 rpm
------------------------------------	----------

Grease Lubrication - B/C/O Seal	1500 rpm
--	----------

Engineering Bearing Attributes

Float	0.083 in 2.108 mm
--------------	----------------------

Shaft Tolerance	0.0015 in 0.038 mm
------------------------	-----------------------

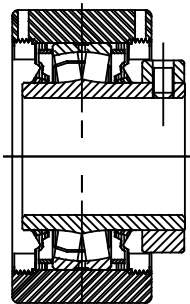
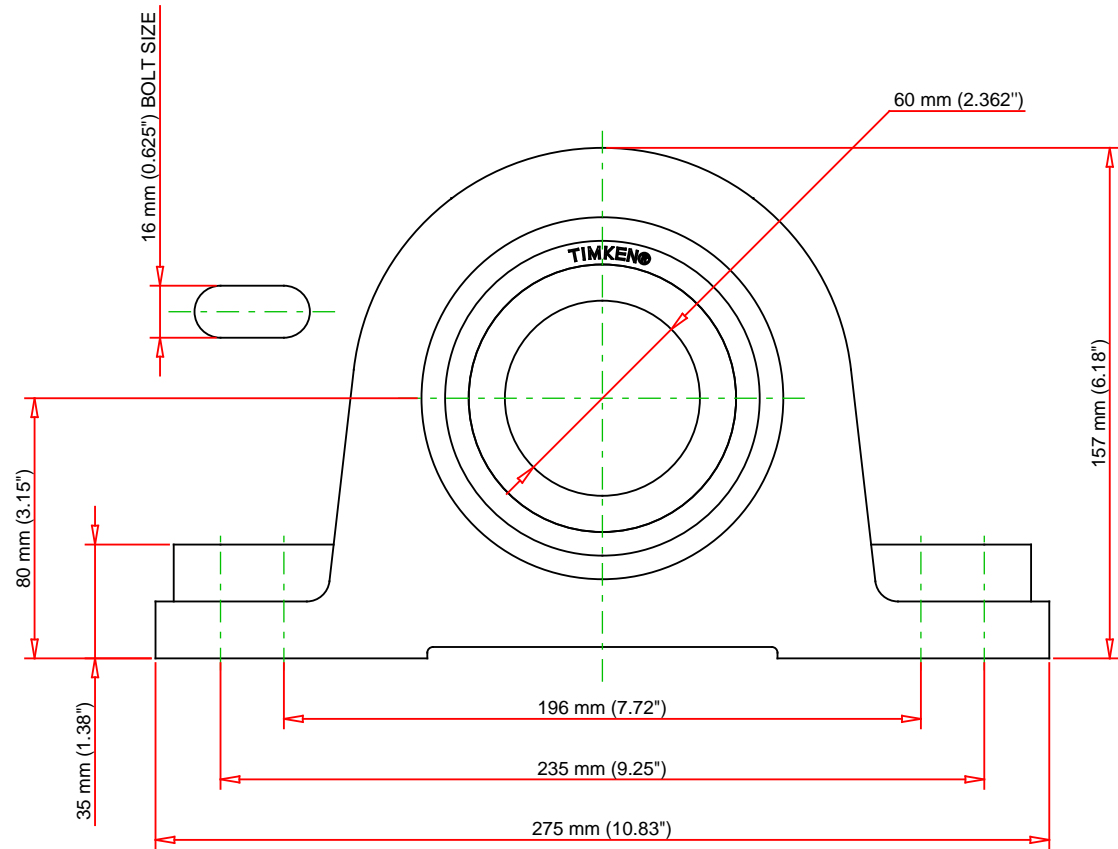
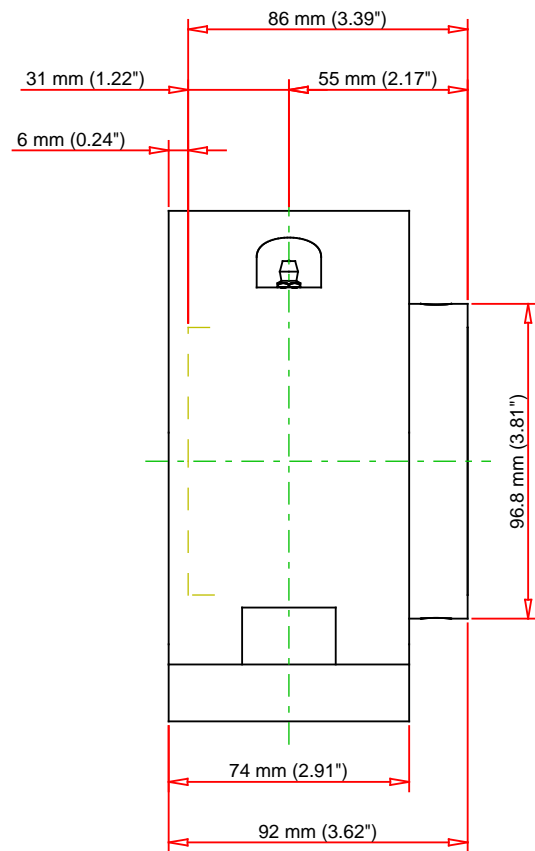
Engineering Internal Radial Clearance

Eng Internal Radial Clearance - Min	0.0016
--	--------

Eng Internal Radial Clearance - Max	0.0026
--	--------

Pre Install Clearance Min	0.0016 in 0.040 mm
----------------------------------	-----------------------

Pre Install Clearance Max	0.0026 in 0.065 mm
----------------------------------	-----------------------



Note: Section View not to Scale

C - Dynamic Load	46400	lbf	206000	N
C0 - Static Load	48600	lbf	216000	N
Weight	15.9	lb	35	kg
Max. Speed T-Seals & Grease	2800	rpm		
Rad. Clearance - Max.	0.0026			

TIMKEN

THE TIMKEN COMPANY
NORTH CANTON, OHIO USA

QASN13A060S

Single Concentric Two-Bolt Pillow
Block

Every reasonable effort has been made to ensure the accuracy of the information contained in this writing, but no liability is accepted for errors, omissions or for any other reason.

FOR DISCUSSION ONLY