


The Timken Company

4500 Mt Pleasant St. NW

N. Canton, OH 44720

Phone: (234) 262-3000

E-Mail: CustomerCAD@timken.com • **Web site:** www.timken.com

Part Number QAACW15A075S, Double Concentric Piloted Flange Cartridge



[Specifications](#) | [Dimensions](#) | [Radial and Thrust Factors](#) | [Engineering Seal Speed](#) | [Engineering Bearing Attributes](#) | [Engineering Internal Radial Clearance](#)

Specifications

Engineering Group Mounted Bearing

Bearing Number 22215

Shaft Size 75 mm

Shaft Size Type Metric

Full Timken Part Number
 QAACW15A075SB
 QAACW15A075SC
 QAACW15A075SEB
 QAACW15A075SEC
 QAACW15A075SEM
 QAACW15A075SEN
 QAACW15A075SEO
 QAACW15A075SET
 QAACW15A075SM
 QAACW15A075SN
 QAACW15A075SO



QAACW15A075ST

Locking Style Double Concentric

Housing Construction Piloted Flange Cartridge

UPC Code

0883450017404
 0883450017411
 0883450017435
 0883450017442
 0883450017459
 0883450017466
 0883450017473
 0883450017480
 0883450194235
 0883450194419
 0883450271400
 0883450271585

Dimensions

Dimension BC 7-1/2 in
190.5 mm

Dimension C 4.285 in
108.8 mm

Dimension D 6.38 in
162.1 mm

Dimension E 5.3 in
134.6 mm

Dimension B Exp 1.89 in
48 mm

Dimension B Fix 1.81 in
46 mm

Dimension F 8-3/4 in
222.3 mm

Dimension H 0.5 in
12.7 mm

Dimension J (Bolt Size)	0.625 in 16 mm
--------------------------------	-------------------

Dimension M	2.37 in 60.2 mm
--------------------	--------------------

Dimension L Exp	3.76 in 95.5 mm
------------------------	--------------------

Dimension L Fix	3.68 in 93.5 mm
------------------------	--------------------

Dimension RAA	1.06 in 26.9 mm
----------------------	--------------------

Dimension SAA	4.74 in 120.4 mm
----------------------	---------------------

Dimension G	6.375 in 161.9 mm
--------------------	----------------------

Dimension N	1.88 in 47.8 mm
--------------------	--------------------

Radial and Thrust Factors

C0 - Static Load	54100 lbf 240000 N
-------------------------	-----------------------

C - Dynamic Load (Basic)	49900 lbf 222000 N
---------------------------------	-----------------------

e - Geometry Factor	0.22
----------------------------	------

Y1 - Geometry Factor	3.14
-----------------------------	------

Y2 - Geometry Factor	4.67
-----------------------------	------

Engineering Seal Speed

Oil Lubrication - M/N Seal	1600 rpm
-----------------------------------	----------

Oil Lubrication - T Seal	2900 rpm
---------------------------------	----------

Oil Lubrication - B/C/O Seal	1300 rpm
-------------------------------------	----------

Grease Lubrication - M/N Seal	1600 rpm
--------------------------------------	----------

Grease Lubrication - T Seal	2400 rpm
------------------------------------	----------

Grease Lubrication - B/C/O Seal	1300 rpm
--	----------

Engineering Bearing Attributes

Float	0.083 in 2.108 mm
--------------	----------------------

Shaft Tolerance	0.0020 in 0.051 mm
------------------------	-----------------------

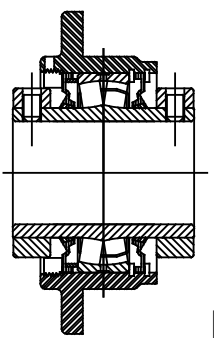
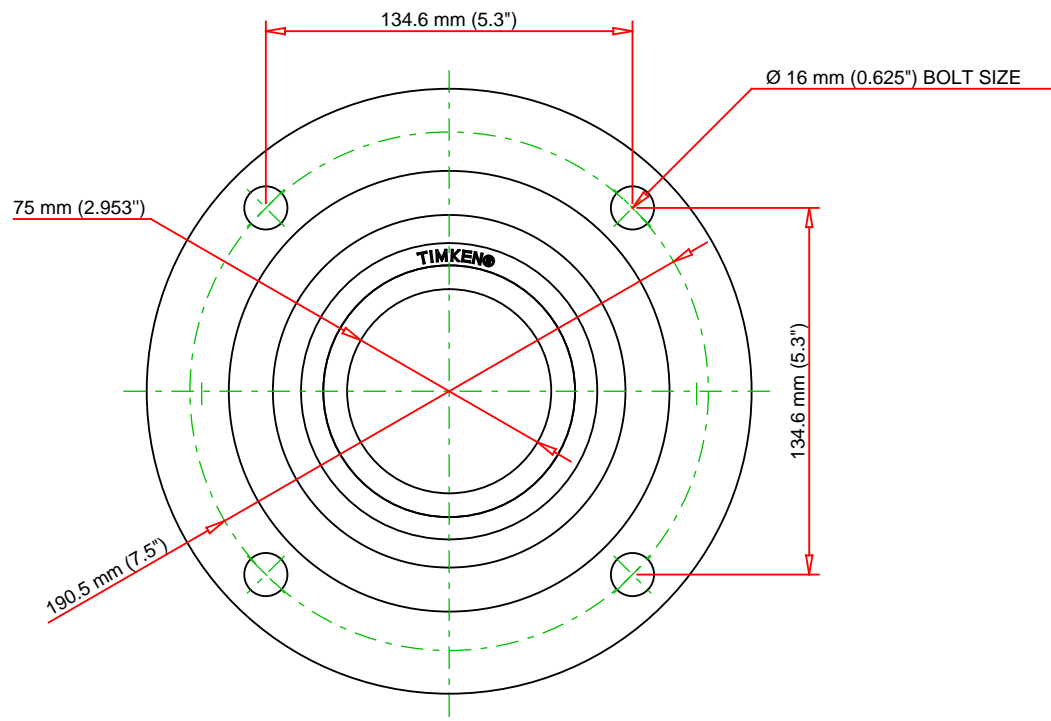
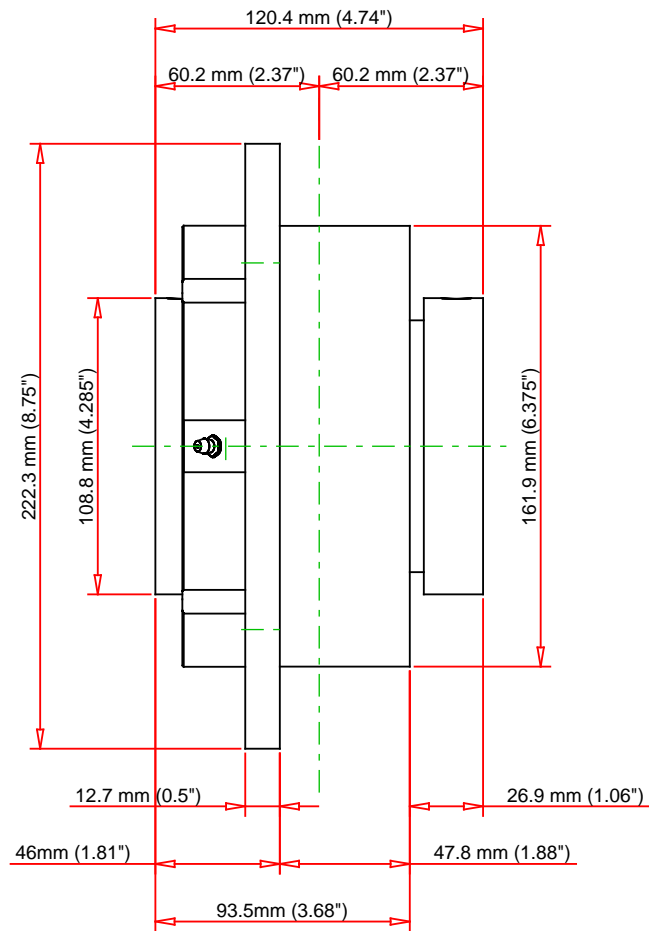
Engineering Internal Radial Clearance

Eng Internal Radial Clearance - Min	0.0020
--	--------

Eng Internal Radial Clearance - Max	0.0031
--	--------

Pre Install Clearance Min	0.050 in 0.0020 mm
----------------------------------	-----------------------

Pre Install Clearance Max	0.080 in 0.0031 mm
----------------------------------	-----------------------



Note: Section View not to Scale

C - Dynamic Load	49900	lbf	222000	N
C0 - Static Load	54100	lbf	240000	N
Weight	22	lb	10	kg
Max. Speed T-Seals & Grease	2400	rpm		
Rad. Clearance - Max.	0.0031			

TIMKEN

THE TIMKEN COMPANY
NORTH CANTON, OHIO USA

QAACW15A075S
Double Concentric Piloted Flange
Cartridge

Every reasonable effort has been made to ensure the accuracy of the information contained in this writing, but no liability is accepted for errors, omissions or for any other reason.

FOR DISCUSSION ONLY