



The Timken Company

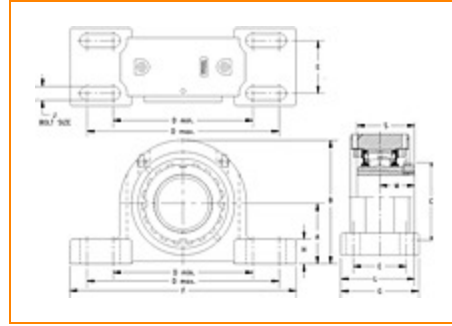
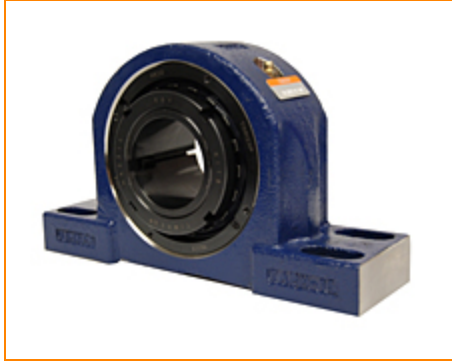
4500 Mt Pleasant St. NW

N. Canton, OH 44720

Phone: (234) 262-3000

E-Mail: CustomerCAD@timken.com • **Web site:** www.timken.com

Part Number DVPF22K315S, Tapered Adapter Four-Bolt Pillow Block



[Specifications](#) | [Dimensions](#) | [Radial and Thrust Factors](#) | [Engineering Seal Speed](#) | [Engineering Bearing Attributes](#) | [Engineering Internal Radial Clearance](#)

Specifications

Engineering Group Mounted Bearing

Bearing Number 22222

Shaft Size 3 15/16 in

Shaft Size Type Imperial

Full Timken Part Number

- DVPF22K315SB
- DVPF22K315SC
- DVPF22K315SEB
- DVPF22K315SEC
- DVPF22K315SEM
- DVPF22K315SEN
- DVPF22K315SEO
- DVPF22K315SET
- DVPF22K315SM
- DVPF22K315SN
- DVPF22K315SO
- DVPF22K315ST



Locking Style	Tapered Adapter
Housing Construction	Four-Bolt Pillow Block
UPC Code	0883450011129 0883450011136 0883450011150 0883450011167 0883450011174 0883450011181 0883450011198 0883450011204 0883450196185 0883450196383 0883450273695 0883450273893

Dimensions

Dimension A	4-1/4 in 108 mm
Dimension B	8.78 in 223 mm
Dimension C	5.71 in 145 mm
Dimension D Min	10.88 in 276.4 mm
Dimension D Max	13.38 in 339.9 mm
Dimension E	2-1/4 in 57.2 mm
Dimension F	14.88 in 378 mm
Dimension G	4.31 in 109.5 mm

Dimension H	1.4 in 35.6 mm
Dimension J (Bolt Size)	0.75 in 20 mm
Dimension L	4.36 in 110.7 mm
Dimension M	2.48 in 63 mm
Dimension S	4.13 in 104.9 mm

Radial and Thrust Factors

C0 - Static Load	147000 lbf 653000 N
C - Dynamic Load (Basic)	125000 lbf 555000 N
e - Geometry Factor	0.25
Y1 - Geometry Factor	2.73
Y2 - Geometry Factor	4.06

Engineering Seal Speed

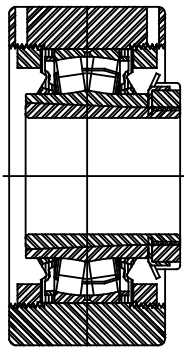
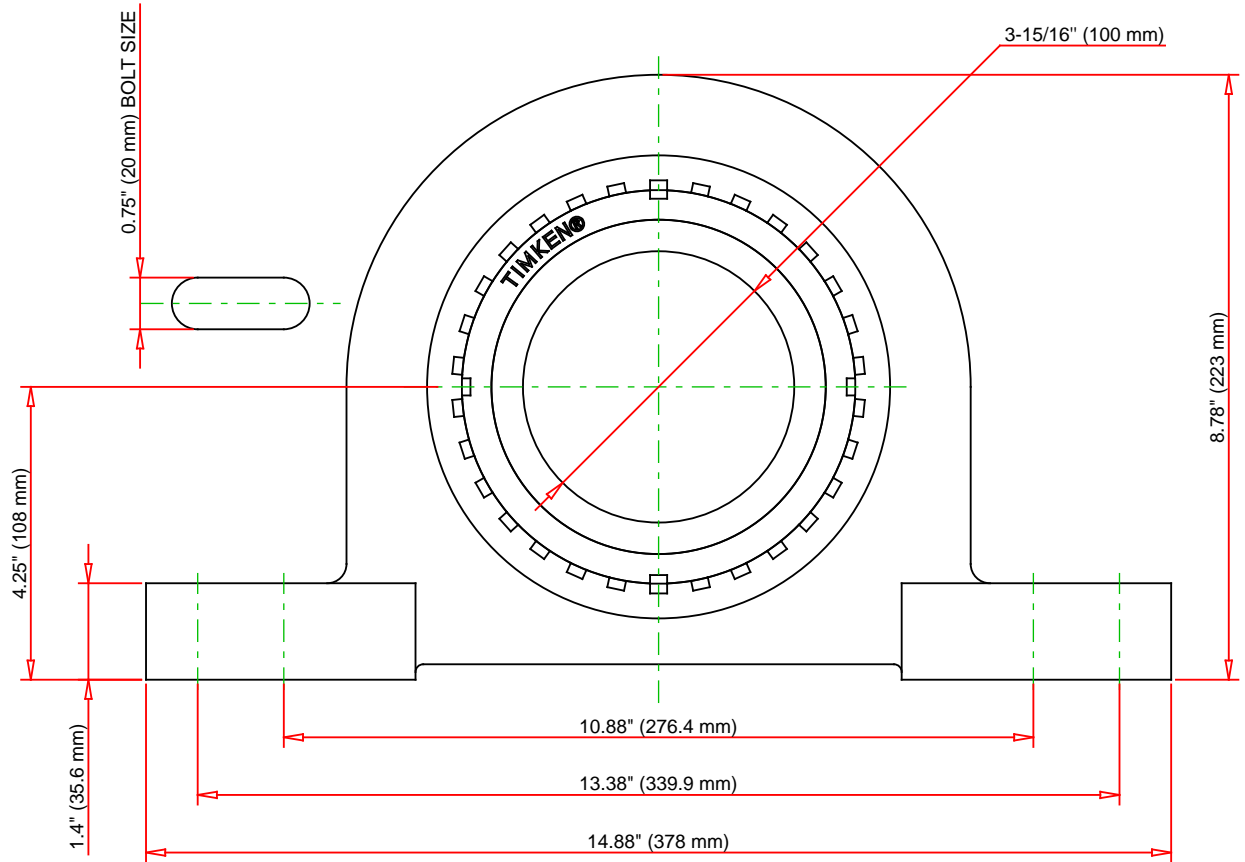
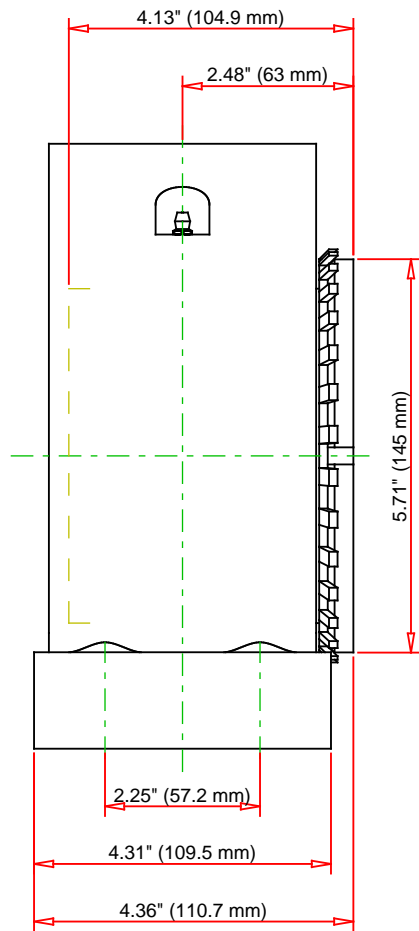
Oil Lubrication - M/N Seal	900 rpm
Oil Lubrication - T Seal	1700 rpm
Oil Lubrication - B/C/O Seal	600 rpm
Grease Lubrication - M/N Seal	900 rpm
Grease Lubrication - T Seal	1200 rpm
Grease Lubrication - B/C/O Seal	600 rpm

Engineering Bearing Attributes

Float	0.083 in 2.108 mm
Shaft Tolerance	0.0040 in 0.102 mm

Engineering Internal Radial Clearance

Pre Install Clearance Min	0.0053 in 0.135 mm
Pre Install Clearance Max	0.0067 in 0.170 mm



Note: Section View not to Scale

C - Dynamic Load	125000	lbf	555000	N
C0 - Static Load	147000	lbf	653000	N
Weight	85	lb	38.6	kg
Max. Speed T-Seals & Grease	1200	rpm		
Rad. Clearance - Max.				

TIMKEN

THE TIMKEN COMPANY
NORTH CANTON, OHIO USA

DVPF22K315S

Tapered Adapter Four-Bolt Pillow
Block

Every reasonable effort has been made to ensure the accuracy of the information contained in this writing, but no liability is accepted for errors, omissions or for any other reason.

FOR DISCUSSION ONLY