



The Timken Company

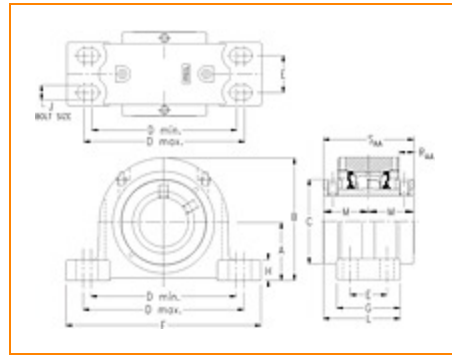
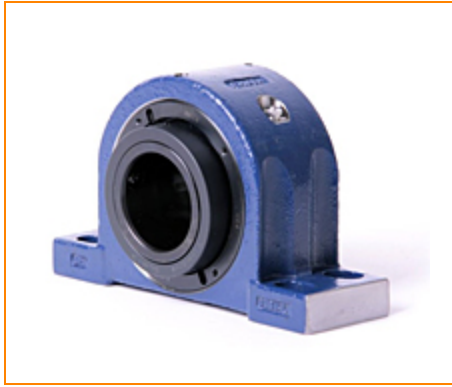
4500 Mt Pleasant St. NW

N. Canton, OH 44720

Phone: (234) 262-3000

E-Mail: CustomerCAD@timken.com • **Web site:** www.timken.com

Part Number QAAPF22A407S, Double Concentric Four-Bolt Pillow Block



[Specifications](#) | [Dimensions](#) | [Radial and Thrust Factors](#) | [Engineering Seal Speed](#) | [Engineering Bearing Attributes](#) | [Engineering Internal Radial Clearance](#)

Specifications

Engineering Group	Mounted Bearing
Bearing Number	22222
Shaft Size	4 7/16 in
Shaft Size Type	Imperial
Full Timken Part Number	QAAPF22A407SB QAAPF22A407SC QAAPF22A407SEB QAAPF22A407SEC QAAPF22A407SEM QAAPF22A407SEN QAAPF22A407SEO QAAPF22A407SET QAAPF22A407SETNG QAAPF22A407SM



QAAPF22A407SMNP
 QAAPF22A407SN
 QAAPF22A407SO
 QAAPF22A407ST
 QAAPF22A407STNG

Locking Style Double Concentric

Housing Construction Four-Bolt Pillow Block

UPC Code

0883450027908
 0883450027915
 0883450027939
 0883450027946
 0883450027953
 0883450027960
 0883450027977
 0883450027984
 0883450189590
 0883450189729
 0883450266932
 0883450267076
 0883450500050
 0883450500067
 0883450963695

Dimensions

Dimension A

4-3/4 in
 120.7 mm

Dimension B

9.19 in
 233.4 mm

Dimension C

6.3 in
 160 mm

Dimension D Min

11.88 in
 301.8 mm

Dimension D Max

14.5 in
 368.3 mm

Dimension E	2-1/2 in 63.5 mm
Dimension F	16.13 in 409.7 mm
Dimension G	4.75 in 120.7 mm
Dimension H	1.58 in 40.1 mm
Dimension J (Bolt Size)	0.761 in 20 mm
Dimension L	5.51 in 140 mm
Dimension M	3.13 in 79.5 mm
Dimension RAA	1.13 in 28.7 mm
Dimension SAA	6.25 in 158.8 mm

Radial and Thrust Factors

C0 - Static Load	147000 lbf 653000 N
C - Dynamic Load (Basic)	125000 lbf 555000 N
e - Geometry Factor	0.25
Y1 - Geometry Factor	2.73
Y2 - Geometry Factor	4.06

Engineering Seal Speed

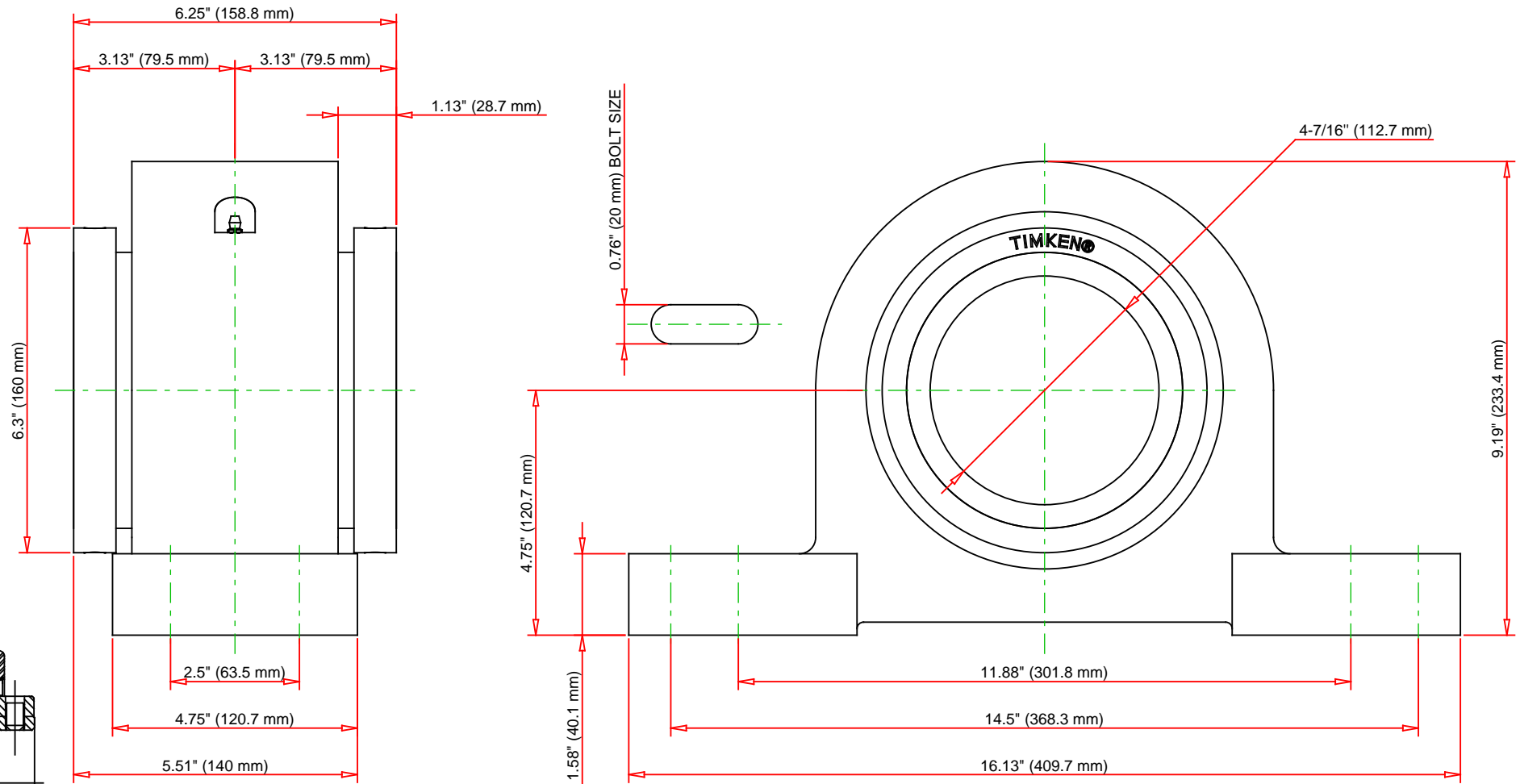
Oil Lubrication - M/N Seal	900 rpm
Oil Lubrication - T Seal	1700 rpm
Oil Lubrication - B/C/O Seal	600 rpm
Grease Lubrication - M/N Seal	900 rpm
Grease Lubrication - T Seal	1200 rpm
Grease Lubrication - B/C/O Seal	600 rpm

Engineering Bearing Attributes

Float	0.083 in 2.108 mm
Shaft Tolerance	0.0050 in 0.127 mm

Engineering Internal Radial Clearance

Eng Internal Radial Clearance - Min	0.0030
Eng Internal Radial Clearance - Max	0.0047
Pre Install Clearance Min	0.0030 in 0.075 mm
Pre Install Clearance Max	0.0047 in 0.120 mm



Note: Section View not to Scale

C - Dynamic Load	125000	lbf	555000	N
C0 - Static Load	147000	lbf	653000	N
Weight	82	lb	37.2	kg
Max. Speed T-Seals & Grease	1200	rpm		
Rad. Clearance - Max.	0.0047			

TIMKEN

THE TIMKEN COMPANY
NORTH CANTON, OHIO USA

QAAPF22A407S
Double Concentric Four-Bolt Pillow
Block

Every reasonable effort has been made to ensure the accuracy of the information contained in this writing, but no liability is accepted for errors, omissions or for any other reason.

FOR DISCUSSION ONLY